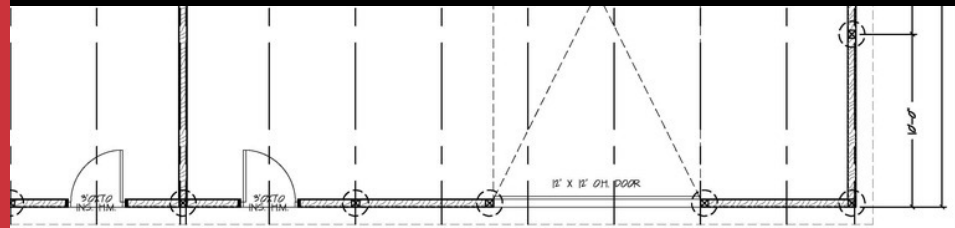


For Lease

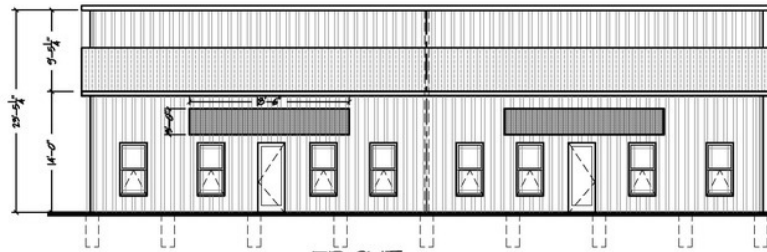
Flex Space

2,964 SF



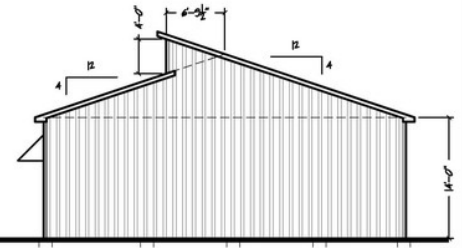
FLOOR PLAN

1/8" = 1'-0" NEW AREA: 2,964 SF.



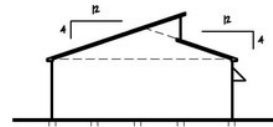
FRONT

1/8" = 1'-0"



RIGHT SIDE

1/8" = 1'-0"



LEFT SIDE

1/16" = 1'-0"



REAR ELEVATION

1/16" = 1'-0"

FLOOR PLANS & ELEVATIONS
261 STONE CROSSING
OFFICE/WAREHOUSE SHELL BUILDING
261 STONE CROSSING - CLARKSVILLE, TN

DRAWN	ZMC
CHECKED	-
APPROVED	-
JOB NO.	7524, Stone Crossing Warehouses
DATE	9-3-2025

257 Stonecrossing Drive

Clarksville, Tennessee 37042

Property Description

Located on Stonecrossing Drive near the intersection of Peachers Mill Road. Excellent visibility from 101st Parkway.

Property Highlights

- 2,964 SF building (can be divided)
- Building delivered in shell condition
- Easily adaptable for flex space, retail, or office use
- 39,615 Vehicles Per Day on 101st Parkway
- Zoned C-5 Highway Commercial Arterial District

OFFERING SUMMARY

Available SF	2,964 SF
Lease Rate	\$16.00 SF/yr (NNN)
Building Size	2,964 SF

DEMOGRAPHICS

Stats	Population	Avg. HH Income
1 Mile	10,020	\$77,544
3 Miles	58,328	\$78,055
5 Miles	130,534	\$78,875

For more information

Wayne Wilkinson, CCIM

O: 931 648 4700

wpw@naiclarksville.com



308 Franklin Street
Clarksville, TN 37040
931 648 4700 tel

www.naiclarksville.com

For Lease

Flex Space Building

\$16.00 SF/yr



Map data ©2025 Imagery ©2025 Airbus, Maxar Technologies

Community Profile

257 Stonecrossing Dr, Clarksville, Tennessee, 37042
Rings: 1, 3, 5 mile radii

Prepared by Esri
Latitude: 36.58595
Longitude: -87.39395

	1 mile	3 miles	5 miles
Population Summary			
2010 Total Population	7,645	42,015	93,034
2020 Total Population	8,868	50,976	116,337
2020 Group Quarters	0	13	3,361
2025 Total Population	10,020	58,328	130,534
2025 Group Quarters	0	12	3,165
2030 Total Population	10,998	63,984	141,702
2025-2030 Annual Rate	1.88%	1.87%	1.66%
2025 Total Daytime Population	6,725	41,486	107,153
Workers	1,614	10,120	36,473
Residents	5,111	31,366	70,680
Household Summary			
2010 Households	2,877	15,234	32,979
2010 Average Household Size	2.66	2.76	2.74
2020 Total Households	3,443	18,789	41,003
2020 Average Household Size	2.58	2.71	2.76
2025 Households	4,000	21,941	47,106
2025 Average Household Size	2.50	2.66	2.70
2030 Households	4,451	24,324	51,737
2030 Average Household Size	2.47	2.63	2.68
2025-2030 Annual Rate	2.16%	2.08%	1.89%
2010 Families	2,075	11,123	23,783
2010 Average Family Size	3.08	3.17	3.19
2025 Families	2,640	14,959	32,339
2025 Average Family Size	2.93	3.15	3.19
2030 Families	2,903	16,436	35,168
2030 Average Family Size	2.91	3.13	3.17
2025-2030 Annual Rate	1.92%	1.90%	1.69%
Housing Unit Summary			
2000 Housing Units	2,633	13,930	27,096
Owner Occupied Housing Units	58.0%	53.4%	50.6%
Renter Occupied Housing Units	38.3%	38.7%	40.7%
Vacant Housing Units	3.8%	7.9%	8.7%
2010 Housing Units	3,139	17,024	36,886
Owner Occupied Housing Units	51.1%	51.5%	48.4%
Renter Occupied Housing Units	40.5%	38.0%	41.1%
Vacant Housing Units	8.3%	10.5%	10.6%
2020 Housing Units	3,617	20,400	44,258
Owner Occupied Housing Units	49.8%	49.7%	47.1%
Renter Occupied Housing Units	45.4%	42.4%	45.5%
Vacant Housing Units	6.0%	7.5%	7.2%
2025 Housing Units	4,210	23,743	50,737
Owner Occupied Housing Units	48.9%	51.8%	48.8%
Renter Occupied Housing Units	46.2%	40.7%	44.1%
Vacant Housing Units	5.0%	7.6%	7.2%
2030 Housing Units	4,717	26,393	55,772
Owner Occupied Housing Units	50.2%	53.0%	49.8%
Renter Occupied Housing Units	44.2%	39.1%	42.9%
Vacant Housing Units	5.6%	7.8%	7.2%

Data Note: Household population includes persons not residing in group quarters. Average Household Size is the household population divided by total households. Persons in families include the householder and persons related to the householder by birth, marriage, or adoption. Per Capita Income represents the income received by all persons aged 15 years and over divided by the total population.

Source: Esri forecasts for 2025 and 2030. U.S. Census Bureau 2000 and 2010 decennial Census data converted by Esri into 2020 geography.

Community Profile

257 Stonecrossing Dr, Clarksville, Tennessee, 37042
Rings: 1, 3, 5 mile radii

Prepared by Esri
Latitude: 36.58595
Longitude: -87.39395

	1 mile	3 miles	5 miles
2025 Households by Income			
Household Income Base	4,000	21,941	47,106
<\$15,000	7.4%	8.8%	9.8%
\$15,000 - \$24,999	2.9%	3.7%	4.0%
\$25,000 - \$34,999	8.7%	7.9%	7.0%
\$35,000 - \$49,999	14.0%	12.1%	11.4%
\$50,000 - \$74,999	25.0%	22.4%	21.5%
\$75,000 - \$99,999	17.2%	18.6%	18.3%
\$100,000 - \$149,999	19.4%	18.7%	19.6%
\$150,000 - \$199,999	3.1%	5.1%	5.5%
\$200,000+	2.2%	2.7%	2.8%
Average Household Income	\$77,544	\$78,055	\$78,875
2030 Households by Income			
Household Income Base	4,451	24,324	51,737
<\$15,000	6.3%	7.5%	8.5%
\$15,000 - \$24,999	2.3%	3.0%	3.3%
\$25,000 - \$34,999	7.2%	6.4%	5.8%
\$35,000 - \$49,999	12.2%	10.7%	10.2%
\$50,000 - \$74,999	23.4%	20.8%	20.2%
\$75,000 - \$99,999	18.2%	19.4%	18.7%
\$100,000 - \$149,999	23.1%	22.0%	22.6%
\$150,000 - \$199,999	4.1%	6.6%	7.0%
\$200,000+	3.2%	3.7%	3.8%
Average Household Income	\$85,249	\$85,837	\$86,060
2025 Owner Occupied Housing Units by Value			
Total	2,057	12,288	24,747
<\$50,000	5.1%	4.2%	4.2%
\$50,000 - \$99,999	2.7%	3.6%	3.6%
\$100,000 - \$149,999	8.1%	7.6%	6.4%
\$150,000 - \$199,999	12.0%	12.4%	9.1%
\$200,000 - \$249,999	15.1%	16.2%	16.9%
\$250,000 - \$299,999	18.7%	19.1%	20.5%
\$300,000 - \$399,999	33.5%	24.2%	26.4%
\$400,000 - \$499,999	3.1%	7.4%	7.0%
\$500,000 - \$749,999	0.8%	2.8%	3.9%
\$750,000 - \$999,999	0.8%	1.2%	1.0%
\$1,000,000 - \$1,499,999	0.0%	0.8%	0.5%
\$1,500,000 - \$1,999,999	0.0%	0.2%	0.4%
\$2,000,000 +	0.1%	0.5%	0.3%
Average Home Value	\$267,684	\$292,288	\$297,349
2030 Owner Occupied Housing Units by Value			
Total	2,366	14,000	27,791
<\$50,000	2.6%	2.5%	2.5%
\$50,000 - \$99,999	0.3%	1.1%	1.3%
\$100,000 - \$149,999	1.0%	2.0%	2.3%
\$150,000 - \$199,999	5.8%	6.3%	4.0%
\$200,000 - \$249,999	9.3%	11.7%	10.4%
\$250,000 - \$299,999	18.5%	18.6%	18.4%
\$300,000 - \$399,999	49.3%	32.4%	35.1%
\$400,000 - \$499,999	6.8%	14.2%	12.9%
\$500,000 - \$749,999	2.5%	5.4%	7.8%
\$750,000 - \$999,999	2.9%	2.6%	2.4%
\$1,000,000 - \$1,499,999	0.3%	1.6%	1.2%
\$1,500,000 - \$1,999,999	0.2%	0.4%	1.1%
\$2,000,000 +	0.5%	1.1%	0.6%
Average Home Value	\$347,893	\$377,877	\$383,595

Data Note: Income represents the preceding year, expressed in current dollars. Household income includes wage and salary earnings, interest dividends, net rents, pensions, SSI and welfare payments, child support, and alimony.

Source: Esri forecasts for 2025 and 2030. U.S. Census Bureau 2000 and 2010 decennial Census data converted by Esri into 2020 geography.

Community Profile

257 Stonecrossing Dr, Clarksville, Tennessee, 37042
Rings: 1, 3, 5 mile radii

Prepared by Esri
Latitude: 36.58595
Longitude: -87.39395

	1 mile	3 miles	5 miles
Median Household Income			
2025	\$66,601	\$68,601	\$69,820
2030	\$73,377	\$76,552	\$77,042
Median Home Value			
2025	\$268,815	\$265,664	\$274,062
2030	\$325,407	\$324,004	\$331,589
Per Capita Income			
2025	\$30,781	\$29,170	\$28,645
2030	\$34,307	\$32,406	\$31,593
Median Age			
2010	27.4	27.5	26.8
2020	28.8	29.2	28.0
2025	30.6	30.9	29.6
2030	32.4	32.4	31.1
2020 Population by Age			
Total	8,868	50,976	116,337
0 - 4	8.7%	9.0%	9.2%
5 - 9	7.1%	8.2%	8.1%
10 - 14	7.3%	7.7%	7.4%
15 - 24	17.6%	16.1%	18.6%
25 - 34	20.5%	19.5%	19.7%
35 - 44	12.2%	12.9%	12.8%
45 - 54	9.2%	9.7%	9.2%
55 - 64	9.4%	9.2%	8.2%
65 - 74	5.7%	5.2%	4.5%
75 - 84	1.8%	2.1%	1.7%
85 +	0.4%	0.5%	0.5%
18 +	73.6%	71.2%	71.5%
2025 Population by Age			
Total	10,020	58,327	130,535
0 - 4	8.2%	8.5%	8.8%
5 - 9	7.6%	8.5%	8.2%
10 - 14	6.4%	7.3%	7.0%
15 - 24	14.4%	13.8%	16.2%
25 - 34	22.9%	20.3%	20.5%
35 - 44	13.2%	14.5%	14.3%
45 - 54	9.3%	9.7%	9.2%
55 - 64	8.2%	8.2%	7.6%
65 - 74	6.6%	6.1%	5.4%
75 - 84	2.7%	2.5%	2.2%
85 +	0.5%	0.6%	0.5%
18 +	73.8%	71.6%	72.1%
2030 Population by Age			
Total	10,998	63,985	141,702
0 - 4	8.1%	8.3%	8.6%
5 - 9	7.0%	7.8%	7.6%
10 - 14	7.1%	7.6%	7.3%
15 - 24	15.0%	14.0%	16.2%
25 - 34	18.2%	17.1%	17.5%
35 - 44	16.6%	16.5%	16.1%
45 - 54	9.5%	10.5%	10.1%
55 - 64	7.6%	7.5%	7.1%
65 - 74	6.7%	6.6%	5.9%
75 - 84	3.5%	3.2%	2.8%
85 +	0.7%	0.8%	0.7%
18 +	74.4%	72.3%	72.8%

Source: Esri forecasts for 2025 and 2030. U.S. Census Bureau 2000 and 2010 decennial Census data converted by Esri into 2020 geography.

Community Profile

257 Stonecrossing Dr, Clarksville, Tennessee, 37042
Rings: 1, 3, 5 mile radii

Prepared by Esri
Latitude: 36.58595
Longitude: -87.39395

	1 mile	3 miles	5 miles
2020 Population by Sex			
Males	4,396	24,952	57,669
Females	4,472	26,024	58,668
2025 Population by Sex			
Males	5,026	28,928	65,435
Females	4,994	29,400	65,099
2030 Population by Sex			
Males	5,499	31,654	70,817
Females	5,499	32,329	70,885
2010 Population by Race/Ethnicity			
Total	7,646	42,014	93,031
White Alone	57.4%	59.5%	61.5%
Black Alone	29.1%	26.6%	25.6%
American Indian Alone	0.7%	0.7%	0.7%
Asian Alone	2.5%	2.4%	2.4%
Pacific Islander Alone	0.7%	0.7%	0.6%
Some Other Race Alone	3.2%	3.8%	3.5%
Two or More Races	6.3%	6.3%	5.7%
Hispanic Origin	11.8%	11.7%	11.0%
Diversity Index	66.7	65.8	63.9
2020 Population by Race/Ethnicity			
Total	8,868	50,976	116,337
White Alone	49.5%	50.9%	52.9%
Black Alone	31.1%	28.5%	27.1%
American Indian Alone	0.8%	0.7%	0.6%
Asian Alone	2.2%	2.2%	2.4%
Pacific Islander Alone	0.6%	0.7%	0.6%
Some Other Race Alone	4.7%	4.9%	4.7%
Two or More Races	11.0%	12.1%	11.7%
Hispanic Origin	13.8%	13.7%	13.3%
Diversity Index	72.8	72.6	71.5
2025 Population by Race/Ethnicity			
Total	10,020	58,327	130,534
White Alone	47.2%	48.6%	50.6%
Black Alone	32.1%	29.4%	28.0%
American Indian Alone	0.9%	0.7%	0.7%
Asian Alone	2.2%	2.3%	2.4%
Pacific Islander Alone	0.6%	0.7%	0.6%
Some Other Race Alone	5.3%	5.5%	5.3%
Two or More Races	11.6%	12.7%	12.4%
Hispanic Origin	15.1%	15.1%	14.7%
Diversity Index	74.5	74.5	73.5
2030 Population by Race/Ethnicity			
Total	10,998	63,984	141,702
White Alone	45.2%	46.5%	48.6%
Black Alone	33.1%	30.4%	28.9%
American Indian Alone	1.0%	0.7%	0.7%
Asian Alone	2.3%	2.5%	2.6%
Pacific Islander Alone	0.7%	0.7%	0.7%
Some Other Race Alone	5.6%	5.8%	5.6%
Two or More Races	12.2%	13.4%	13.0%
Hispanic Origin	15.9%	16.0%	15.5%
Diversity Index	75.7	75.8	74.9

Data Note: Persons of Hispanic Origin may be of any race. The Diversity Index measures the probability that two people from the same area will be from different race/ethnic groups.

Source: Esri forecasts for 2025 and 2030. U.S. Census Bureau 2000 and 2010 decennial Census data converted by Esri into 2020 geography.

Community Profile

257 Stonecrossing Dr, Clarksville, Tennessee, 37042
 Rings: 1, 3, 5 mile radii

Prepared by Esri
 Latitude: 36.58595
 Longitude: -87.39395

	1 mile	3 miles	5 miles
2020 Population by Relationship and Household Type			
Total	8,868	50,976	116,337
In Households	100.0%	100.0%	97.1%
Householder	38.4%	36.7%	35.3%
Opposite-Sex Spouse	16.9%	16.3%	16.6%
Same-Sex Spouse	0.3%	0.2%	0.2%
Opposite-Sex Unmarried Partner	2.5%	2.7%	2.4%
Same-Sex Unmarried Partner	0.1%	0.1%	0.2%
Biological Child	28.1%	30.1%	29.5%
Adopted Child	0.6%	0.6%	0.6%
Stepchild	2.1%	2.1%	2.1%
Grandchild	2.5%	2.9%	2.5%
Brother or Sister	1.2%	1.2%	1.1%
Parent	0.8%	1.0%	1.0%
Parent-in-law	0.3%	0.3%	0.3%
Son-in-law or Daughter-in-law	0.4%	0.3%	0.3%
Other Relatives	1.3%	1.4%	1.4%
Foster Child	0.1%	0.1%	0.1%
Other Nonrelatives	4.1%	3.9%	3.6%
In Group Quarters	0.0%	0.0%	2.9%
Institutionalized	0.0%	0.0%	0.5%
Noninstitutionalized	0.0%	0.0%	2.4%
2025 Population 25+ by Educational Attainment			
Total	6,346	36,121	78,011
Less than 9th Grade	1.0%	2.7%	2.3%
9th - 12th Grade, No Diploma	2.5%	3.1%	3.5%
High School Graduate	21.6%	26.0%	25.0%
GED/Alternative Credential	3.5%	3.5%	3.6%
Some College, No Degree	26.3%	22.5%	23.7%
Associate Degree	18.0%	14.2%	14.4%
Bachelor's Degree	21.0%	18.2%	18.3%
Graduate/Professional Degree	6.1%	9.7%	9.2%
2025 Population 15+ by Marital Status			
Total	7,785	44,169	99,131
Never Married	31.3%	29.0%	31.7%
Married	55.7%	55.1%	53.0%
Widowed	3.5%	3.9%	3.7%
Divorced	9.6%	12.0%	11.6%
2025 Civilian Population 16+ in Labor Force			
Civilian Population 16+	4,586	25,548	52,624
Population 16+ Employed	93.1%	94.0%	94.0%
Population 16+ Unemployment rate	6.9%	6.0%	6.0%
Population 16-24 Employed	15.2%	14.5%	16.5%
Population 16-24 Unemployment rate	9.1%	4.8%	5.1%
Population 25-54 Employed	69.5%	69.2%	68.7%
Population 25-54 Unemployment rate	7.7%	7.1%	7.1%
Population 55-64 Employed	12.3%	12.8%	11.8%
Population 55-64 Unemployment rate	1.1%	1.8%	1.1%
Population 65+ Employed	3.1%	3.5%	2.9%
Population 65+ Unemployment rate	0.0%	1.5%	3.1%

Source: Esri forecasts for 2025 and 2030. U.S. Census Bureau 2000 and 2010 decennial Census data converted by Esri into 2020 geography.

Community Profile

257 Stonecrossing Dr, Clarksville, Tennessee, 37042
Rings: 1, 3, 5 mile radii

Prepared by Esri
Latitude: 36.58595
Longitude: -87.39395

	1 mile	3 miles	5 miles
2025 Employed Population 16+ by Industry			
Total	4,269	24,023	49,464
Agriculture/Mining	1.2%	1.1%	0.7%
Construction	5.0%	8.2%	6.4%
Manufacturing	11.2%	11.5%	12.0%
Wholesale Trade	1.3%	1.0%	1.2%
Retail Trade	16.4%	11.9%	10.9%
Transportation/Utilities	4.7%	5.8%	5.8%
Information	2.5%	1.1%	1.6%
Finance/Insurance/Real Estate	2.7%	3.4%	4.1%
Services	45.4%	46.7%	48.1%
Public Administration	9.6%	9.2%	9.2%
2025 Employed Population 16+ by Occupation			
Total	4,268	24,023	49,464
White Collar	47.5%	50.0%	51.4%
Management/Business/Financial	10.1%	10.5%	11.7%
Professional	19.0%	18.0%	19.1%
Sales	8.7%	7.3%	7.6%
Administrative Support	9.8%	14.2%	13.1%
Services	20.5%	20.8%	21.5%
Blue Collar	31.9%	29.2%	27.1%
Farming/Forestry/Fishing	0.0%	0.0%	0.1%
Construction/Extraction	3.6%	5.8%	4.3%
Installation/Maintenance/Repair	7.1%	4.8%	4.6%
Production	8.3%	8.4%	8.5%
Transportation/Material Moving	12.9%	10.2%	9.7%
2020 Households by Type			
Total	3,443	18,789	41,003
Married Couple Households	45.2%	45.0%	47.9%
With Own Children <18	18.4%	20.7%	23.4%
Without Own Children <18	26.8%	24.3%	24.5%
Cohabiting Couple Households	6.9%	7.9%	7.2%
With Own Children <18	2.6%	3.2%	2.9%
Without Own Children <18	4.4%	4.6%	4.2%
Male Householder, No Spouse/Partner	20.0%	18.9%	18.6%
Living Alone	12.6%	11.9%	11.9%
65 Years and over	1.9%	1.8%	1.7%
With Own Children <18	2.5%	2.2%	2.2%
Without Own Children <18, With Relatives	2.7%	2.7%	2.6%
No Relatives Present	2.2%	2.1%	2.0%
Female Householder, No Spouse/Partner	27.9%	28.2%	26.3%
Living Alone	12.0%	11.1%	10.5%
65 Years and over	3.1%	3.5%	3.0%
With Own Children <18	9.1%	9.5%	8.6%
Without Own Children <18, With Relatives	5.8%	6.6%	5.9%
No Relatives Present	1.0%	1.1%	1.3%
2020 Households by Size			
Total	3,443	18,789	41,003
1 Person Household	24.6%	22.9%	22.4%
2 Person Household	32.9%	31.2%	30.6%
3 Person Household	19.6%	19.4%	19.3%
4 Person Household	12.7%	14.3%	14.9%
5 Person Household	6.1%	7.3%	7.8%
6 Person Household	2.4%	2.9%	3.2%
7 + Person Household	1.7%	1.9%	1.8%

Source: Esri forecasts for 2025 and 2030. U.S. Census Bureau 2000 and 2010 decennial Census data converted by Esri into 2020 geography.

October 22, 2025

Community Profile

257 Stonecrossing Dr, Clarksville, Tennessee, 37042
Rings: 1, 3, 5 mile radii

Prepared by Esri
Latitude: 36.58595
Longitude: -87.39395

	1 mile	3 miles	5 miles
2020 Households by Tenure and Mortgage Status			
Total	3,443	18,789	41,003
Owner Occupied	52.3%	54.0%	50.9%
Owned with a Mortgage/Loan	42.2%	44.0%	42.1%
Owned Free and Clear	10.1%	10.0%	8.8%
Renter Occupied	47.7%	46.0%	49.1%
2025 Affordability, Mortgage and Wealth			
Housing Affordability Index	93	97	96
Percent of Income for Mortgage	25.3%	24.2%	24.6%
Wealth Index	45	46	46
2020 Housing Units By Urban/ Rural Status			
Total	3,617	20,400	44,258
Urban Housing Units	99.4%	98.7%	97.8%
Rural Housing Units	0.6%	1.3%	2.2%
2020 Population By Urban/ Rural Status			
Total	8,868	50,976	116,337
Urban Population	99.1%	98.2%	97.6%
Rural Population	0.9%	1.8%	2.4%

Data Note: Households with children include any households with people under age 18, related or not. Multigenerational households are families with 3 or more parent-child relationships. Unmarried partner households are usually classified as nonfamily households unless there is another member of the household related to the householder. Multigenerational and unmarried partner households are reported only to the tract level. Esri estimated block group data, which is used to estimate polygons or non-standard geography.

Source: Esri forecasts for 2025 and 2030. U.S. Census Bureau 2000 and 2010 decennial Census data converted by Esri into 2020 geography.

Community Profile

257 Stonecrossing Dr, Clarksville, Tennessee, 37042
Rings: 1, 3, 5 mile radii

Prepared by Esri
Latitude: 36.58595
Longitude: -87.39395

	1 mile	3 miles	5 miles
Top 3 Tapestry Segments			
1.	Up and Coming Families (G2)	Up and Coming Families (G2)	Up and Coming Families (G2)
2.	Metro Fusion (C3)	Metro Fusion (C3)	Metro Fusion (C3)
3.	Middle Ground (K2)	Middle Ground (K2)	Middle Ground (K2)
2025 Consumer Spending			
Apparel & Services: Total \$	\$6,871,790	\$37,596,855	\$81,904,619
Average Spent	\$1,717.95	\$1,713.54	\$1,738.73
Spending Potential Index	70	70	71
Education: Total \$	\$4,494,604	\$23,943,445	\$52,390,460
Average Spent	\$1,123.65	\$1,091.26	\$1,112.18
Spending Potential Index	63	61	62
Entertainment/Recreation: Total \$	\$10,972,528	\$60,538,949	\$130,367,824
Average Spent	\$2,743.13	\$2,759.17	\$2,767.54
Spending Potential Index	67	67	67
Food at Home: Total \$	\$20,560,557	\$113,520,682	\$244,451,541
Average Spent	\$5,140.14	\$5,173.91	\$5,189.39
Spending Potential Index	69	70	70
Food Away from Home: Total \$	\$11,401,486	\$62,859,358	\$137,182,650
Average Spent	\$2,850.37	\$2,864.93	\$2,912.21
Spending Potential Index	69	69	71
Health Care: Total \$	\$21,077,761	\$117,904,715	\$250,598,344
Average Spent	\$5,269.44	\$5,373.72	\$5,319.88
Spending Potential Index	68	69	69
HH Furnishings & Equipment: Total \$	\$7,908,095	\$43,791,397	\$94,697,602
Average Spent	\$1,977.02	\$1,995.87	\$2,010.31
Spending Potential Index	68	69	69
Personal Care Products & Services: Total \$	\$2,911,613	\$15,973,064	\$34,726,926
Average Spent	\$727.90	\$728.00	\$737.21
Spending Potential Index	69	69	70
Shelter: Total \$	\$71,085,825	\$388,710,739	\$848,848,779
Average Spent	\$17,771.46	\$17,716.18	\$18,019.97
Spending Potential Index	67	67	68
Support Payments/Cash Contributions/Gifts in Kind: Total \$	\$8,765,596	\$50,059,499	\$108,223,212
Average Spent	\$2,191.40	\$2,281.55	\$2,297.44
Spending Potential Index	66	69	70
Travel: Total \$	\$8,993,579	\$49,656,064	\$108,187,116
Average Spent	\$2,248.39	\$2,263.16	\$2,296.67
Spending Potential Index	62	63	64
Vehicle Maintenance & Repairs: Total \$	\$3,839,834	\$21,163,290	\$45,604,526
Average Spent	\$959.96	\$964.55	\$968.13
Spending Potential Index	71	72	72

Data Note: Consumer spending shows the amount spent on a variety of goods and services by households that reside in the area. Expenditures are shown by broad budget categories that are not mutually exclusive. Consumer spending does not equal business revenue. Total and Average Amount Spent Per Household represent annual figures. The Spending Potential Index represents the amount spent in the area relative to a national average of 100.

Source: Consumer Spending data are derived from the 2022 and 2023 Consumer Expenditure Surveys, Bureau of Labor Statistics. Esri.

Source: Esri forecasts for 2025 and 2030. U.S. Census Bureau 2000 and 2010 decennial Census data converted by Esri into 2020 geography.