

# 34650 N. US HWY 19

SUITE 302, PALM HARBOR, FL 34689



Elevated third floor workspace for lease in a three-story professional office building, offering a spacious 6,444 SF suite that is easily divisible or contiguous to accommodate all needs.

## PROPERTY HIGHLIGHTS



6,444 SF | Divisible  
or Contiguous



Large Common Area  
with Perimeter  
Office Buildout



Excellent US  
Hwy 19 Location



Parking:  
4.3:1000



ADT:  
76,000

## LISTING AGENTS

Larry Brown

Email: [lbrown@thekraussorg.com](mailto:lbrown@thekraussorg.com)

Office: (813) 885-5656

Cell: (813) 787-9637

Bob Donnelly

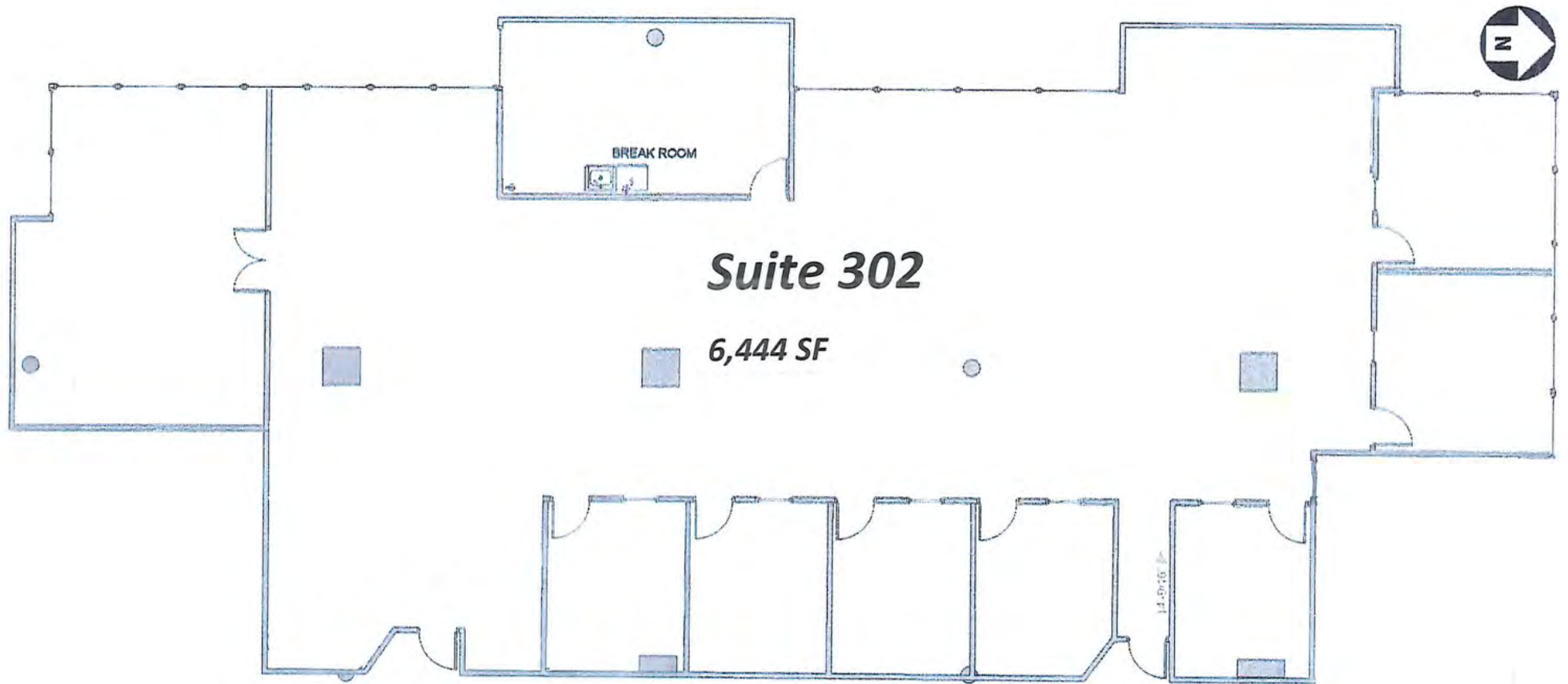
Email: [rdonnelly@thekraussorg.com](mailto:rdonnelly@thekraussorg.com)

Office: (813) 885-5656

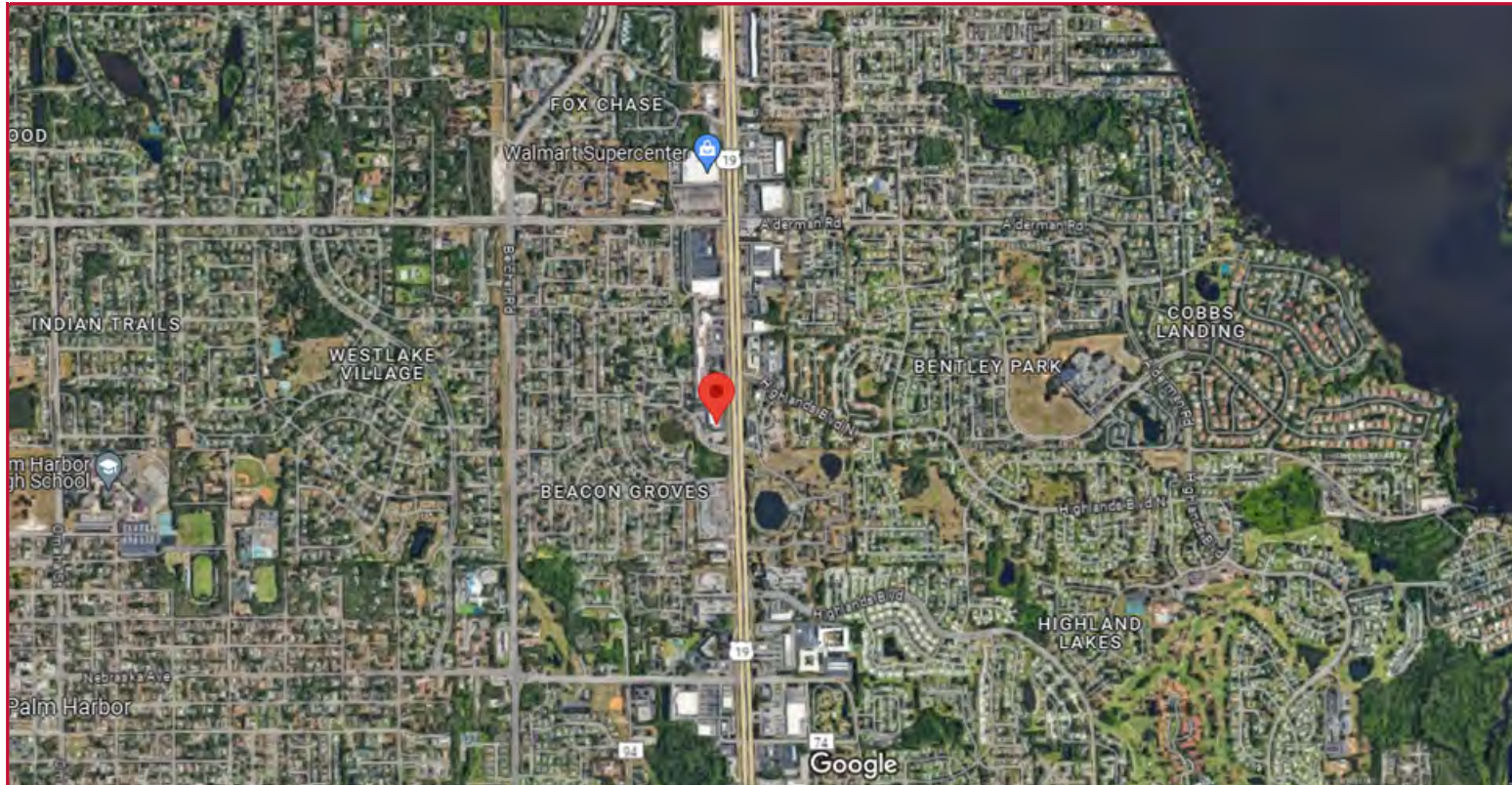
Cell: (813) 758-2312

**THE KRAUSS** ORGANIZATION, INC.  
Commercial Real Estate Services • Since 1952  
711 North Sherrill Street Tampa, FL 33609

# Suite 302 Floorplan



# The Neighborhood



## NEARBY FEATURES

**SPROUTS**  
FARMERS MARKET



*Walgreens*



LA | FITNESS.

Walmart



The UPS Store

## For Additional Information:

Larry Brown

Email: [lbrown@thekraussorg.com](mailto:lbrown@thekraussorg.com)

Office: (813) 885-5656

Cell: (813) 787-9637

Bob Donnelly

Email: [rdonnelly@thekraussorg.com](mailto:rdonnelly@thekraussorg.com)

Office: (813) 885-5656

Cell: (813) 758-2312

**THE KRAUSS** ORGANIZATION, INC.  
Commercial Real Estate Services • Since 1952  
711 North Sherrill Street Tampa, FL 33609