



WAREHOUSE/DISTRIBUTION CENTER | FOR LEASE

37 NE 122ND ST., OKLAHOMA CITY, OK

BRETT PRICE, CCIM, SIOR
bprice@newmarkrp.com
C: 405.613.8380

KARLEY HARPER, CCIM
kharper@newmarkrp.com
C: 405.371.3498

KRIS DAVIS, SIOR
kgdavis@newmarkrp.com
C: 405.202.9525

NEWMARK
ROBINSON PARK

DETAILS

Available SF	84,660 SF±
Lease Rate	Contact Broker
Building Size	222,979 SF
Lot Size	9.14 Acres
Zoning	I-3
Cross Streets	NE 122nd & Broadway Ext.

PROPERTY OVERVIEW

Warehouse/Distribution property comprised of freezer and cooler space, warehouse, office, and storage space. It is located less than 1/2 mile from the Broadway Ext./Kilpatrick Turnpike intersection providing quick access to all of Oklahoma City's major highways.

The freezer and cooler spaces are not currently functioning, but the landlord is open to restoring.



HIGHLIGHTS

61,630 SF± warehouse space

11,250 SF± office space

11,780 SF± vehicle maintenance building

9 dock high doors with lights, levelers & seals

5 overhead doors in vehicle maintenance bldg.

480V/277V, 3-phase, 1500amps

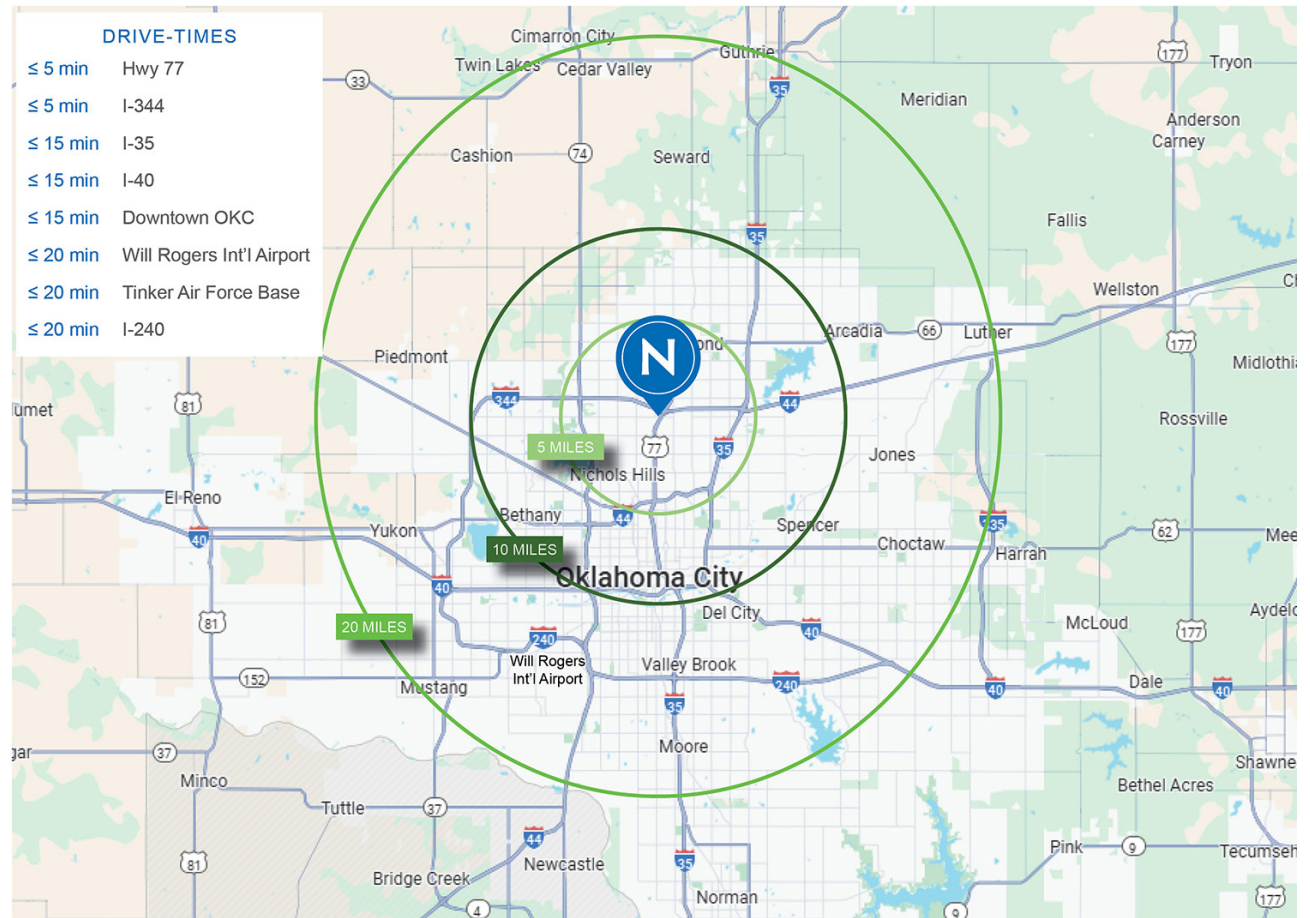
480amp back-up generator

Dry sprinkler system in freezer areas

Wet sprinkler system in remainder of building

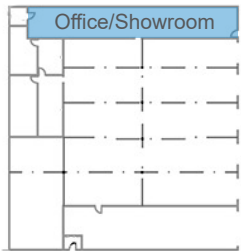
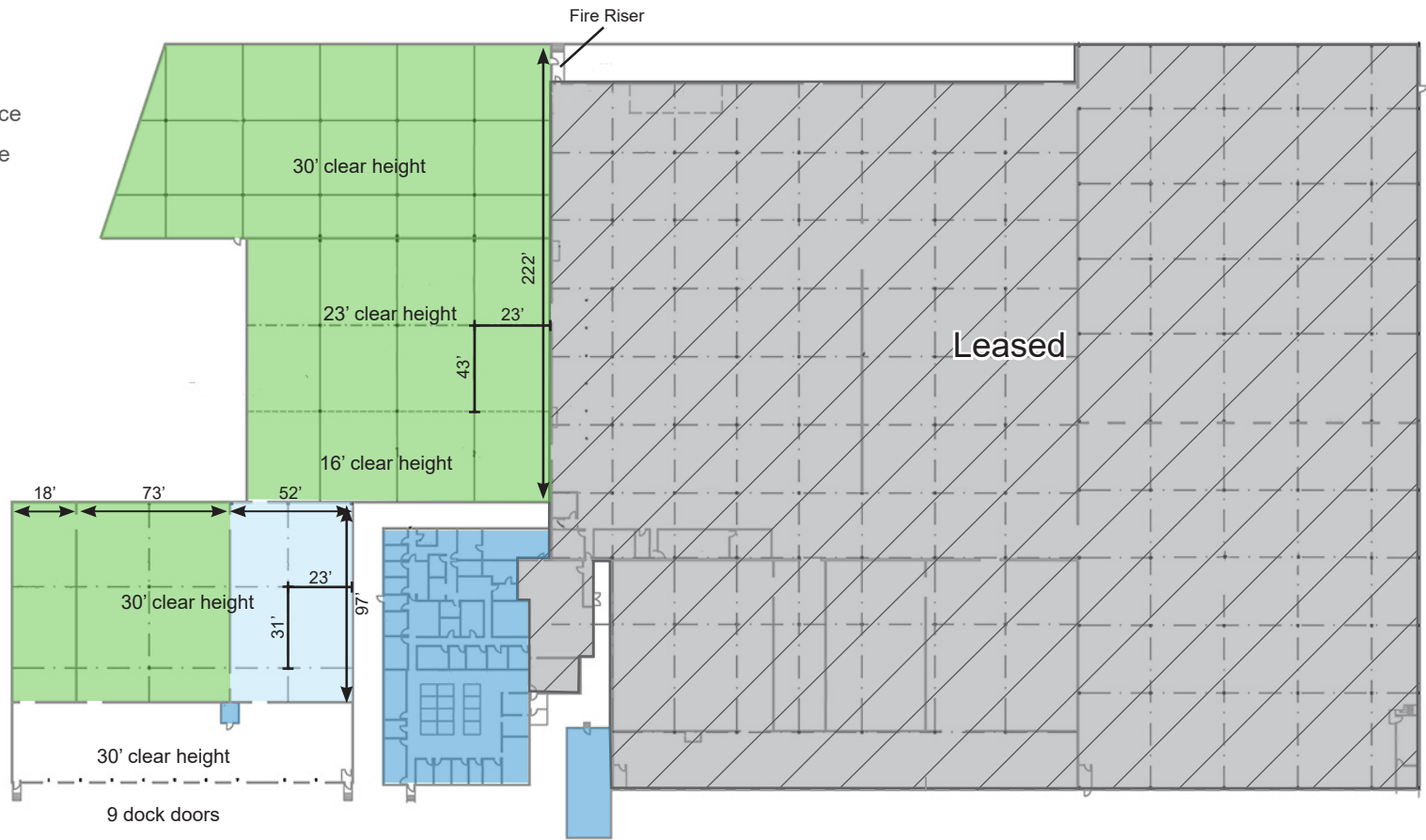
T-8 lighting

Trailer parking available



KEY

- Potential Freezer Space
- Potential Cooler Space
- Office Space
- Leased Space



5 OH doors

Vehicle Maintenance



