

1514 Highway 17, North

±2,924 SF on ±.047 Acres

Mt Pleasant
South Carolina, 29464

Two-Story Single Standing Retail Building with Frontage on Highway 17



Photos



1514 Highway 17, North
Mount Pleasant, SC 29464

For Sale

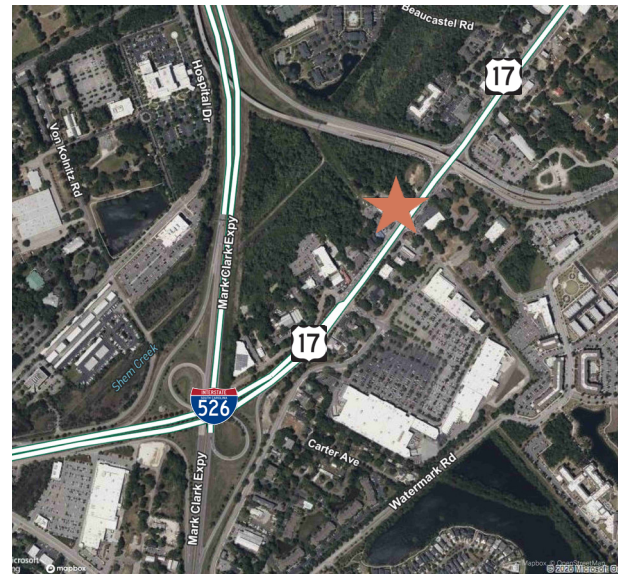
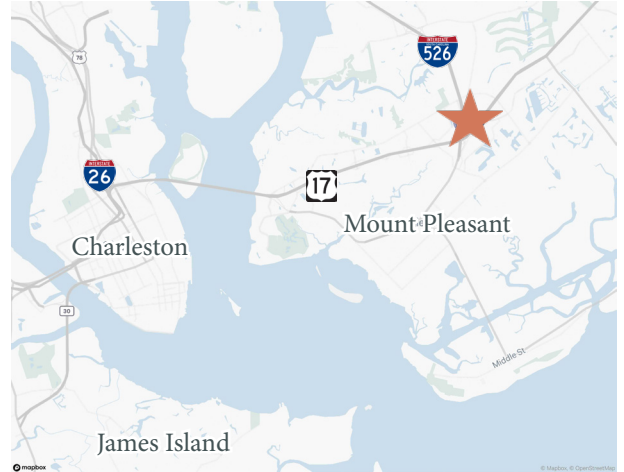
Highlights

Located on Highway 17 between the I-526 overpass and the Hungry Neck Blvd Overpass on the left as you travel north.

- + Previously a Henry's Sporting Goods Store
- + I-526 and Hwy 17: 81,200 VPD
- + ±2,084 SF on the first floor and ±840 SF on the second floor
- + Immediate nearby and in walking distance includes: Chipotle, Ye Ole Fashioned Ice Cream and Sandwich Shop, Cambria Hotel, and Wando Crossing Center to include Walmart, TJ Maxx, Marshalls, and Total Wine & More
- + Ideal for redevelopment
- + Site is located in Charleston County outside the Town of Mt Pleasant
- + Zoning: Commercial in the Charleston County, Mount Pleasant Overlay District

\$1,295,000

Sale Price



Contact Us

Charles Carmody
Senior Vice President
+1 843 577 1155
charles.carmody@cbre.com

Ryan Carmody
Vice President
+1 843 577 1162
ryan.carmody@cbre.com

© 2026 CBRE, Inc. All rights reserved. This information has been obtained from sources believed reliable, but has not been verified for accuracy or completeness. You should conduct a careful, independent investigation of the property and verify all information. Any reliance on this information is solely at your own risk. CBRE and the CBRE logo are service marks of CBRE, Inc. All other marks displayed on this document are the property of their respective owners, and the use of such logos does not imply any affiliation with or endorsement of CBRE. Photos herein are the property of their respective owners. Use of these images without the express written consent of the owner is prohibited.