

Specifications

±3,800 SF Industrial Warehouse
BUILDING SIZE

Heavy Power with Industrial
Infrastructure In Place
POWER

Contractor, Fleet, Storage,
Distribution or Service
IDEAL USES

±5,000 SF Lot Size
Industrial Outdoor Storage Capable
Fully Fenced and Secure Site
Onsite Parking
Excellent Truck Access
LOT FEATURES

±10' CEILING HEIGHT 1 DRIVE-IN

Strategic Newark Industrial Location
Minutes to US Hwy 1 & 9 and I-95
ACCESSIBILITY

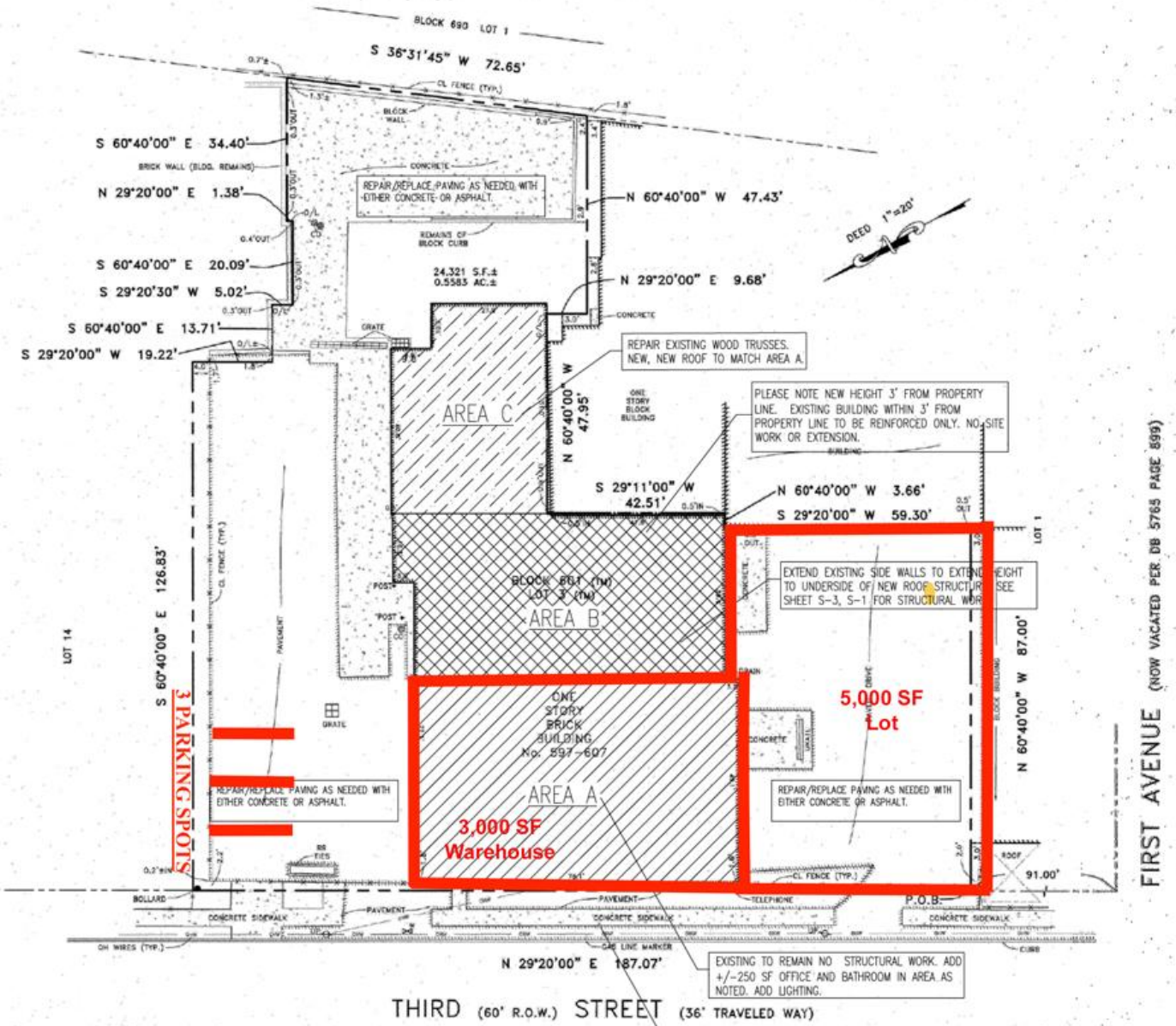
For additional property information or to arrange an inspection,
please contact the exclusive broker:

Juan Disla
Director
973.379.6644 x 226
JD@blauberg.com



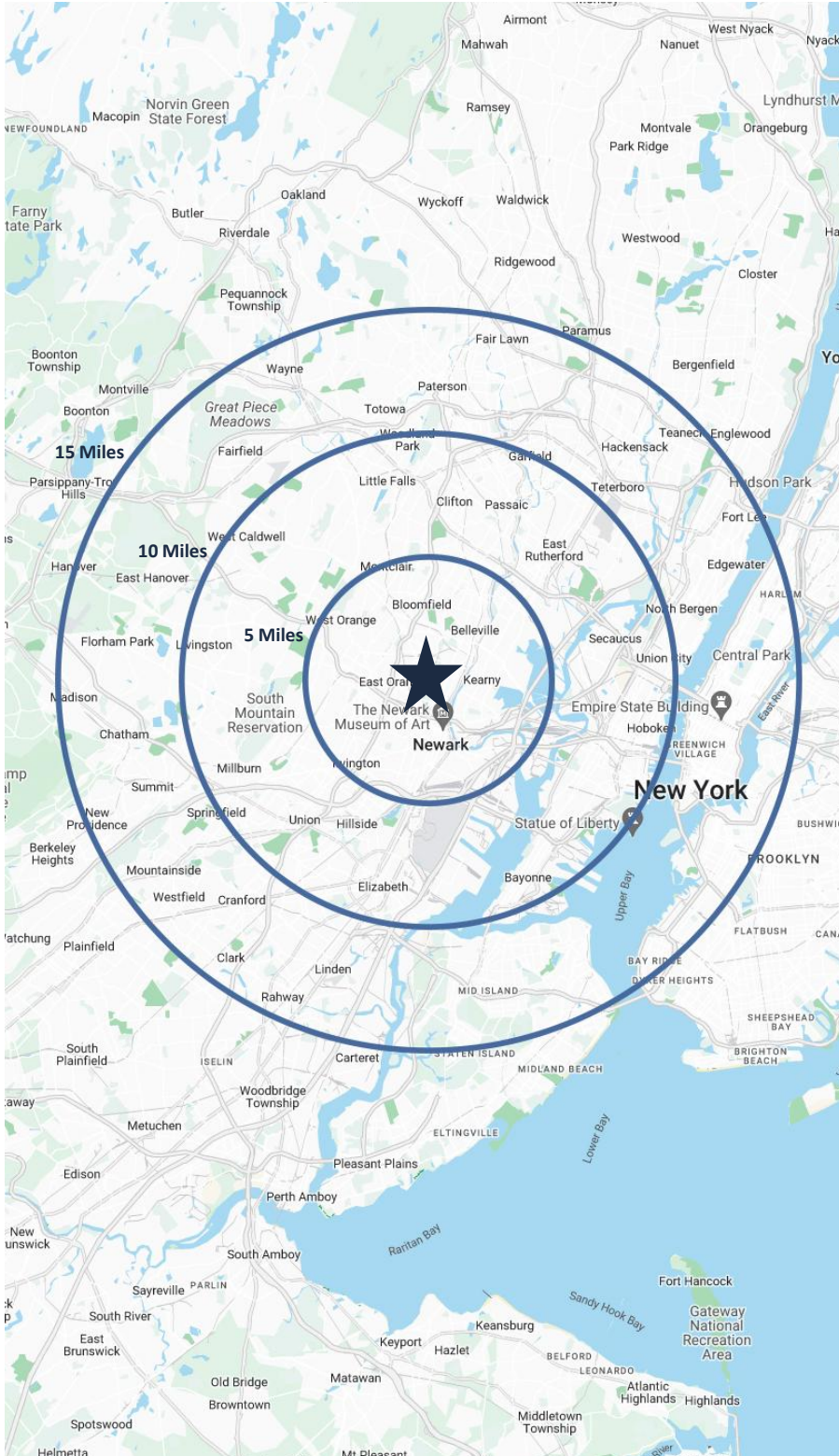
For additional property information or to arrange an inspection,
please contact the exclusive broker:

Juan Disla
Director
973.379.6644 x 226
JD@blauberg.com



For additional property information or to arrange an inspection, please contact the exclusive broker:

Juan Disla
 Director
 973.379.6644 x 226
 JD@blauberg.com



5 MILES

- Total Population: 818,663
- Households: 306,224
- Median Household Income: \$85,742
- Average Household Size: 2.6
- Transportation to Work: 405,167
- Labor Force: 655,619

10 MILES

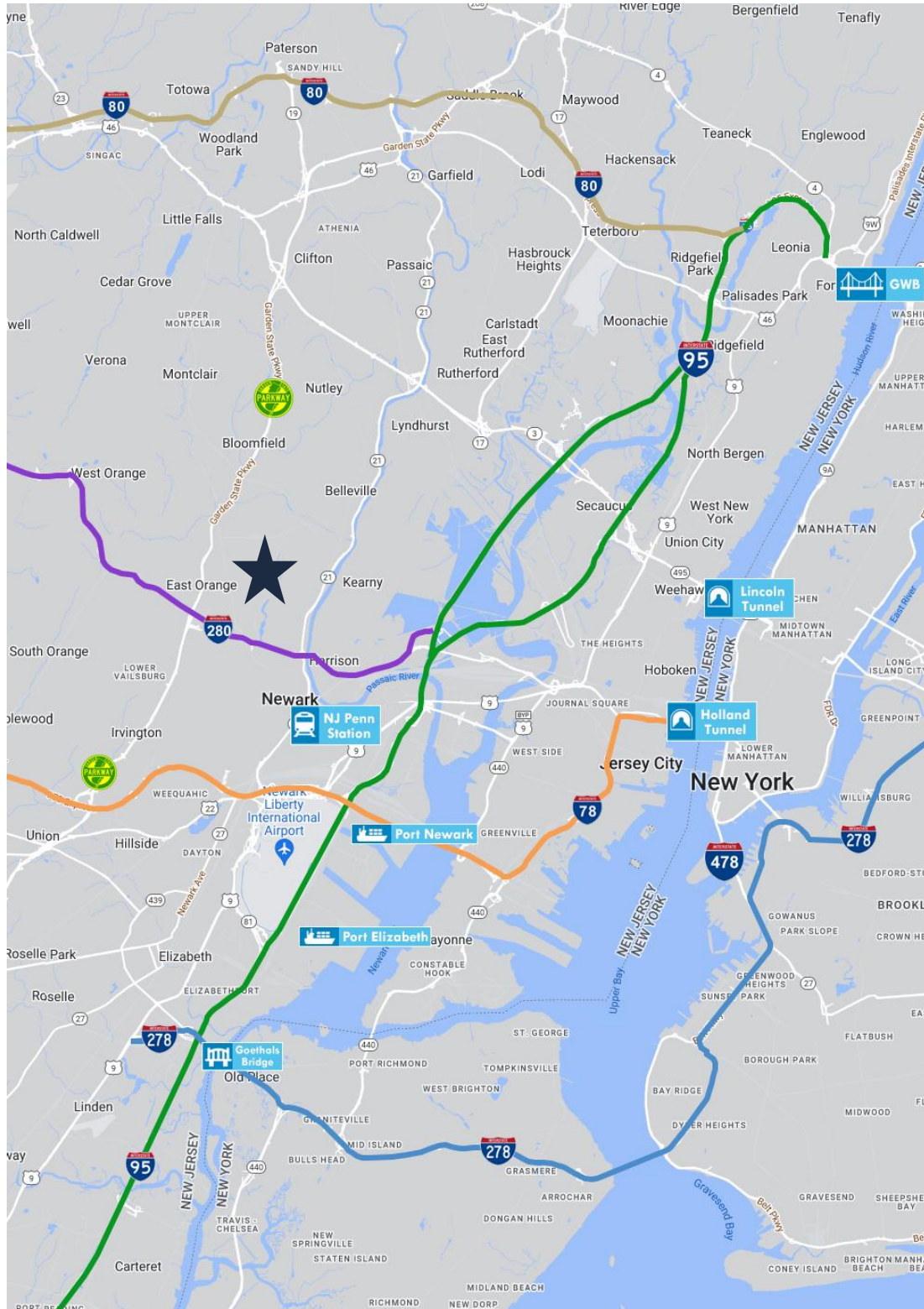
- Total Population: 2.78M
- Households: 1.09M
- Median Household Income: \$112,800
- Average Household Size: 2.5
- Transportation to Work: 1.49M
- Labor Force: 2.26M

15 MILES

- Total Population: 7.91M
- Households: 3.19M
- Median Household Income: \$112,940
- Average Household Size: 2.4
- Transportation to Work: 4.21M
- Labor Force: 6.52M

For additional property information or to arrange an inspection, please contact the exclusive broker:

Juan Disla
Director
973.379.6644 x 226
JD@blauberg.com



ACCESSIBILITY

- 
1.9 MI
I-280
- 
2.4 MI
GSP Exit 145
- 
2.6 MI
Penn Station
- 
5.3 MI
US Hwy 1 & 9
- 
5.7 MI
I-95 Exit 15
- 
6.4 MI
I-78 Exit 52
- 
6.5 MI
Newark Airport
- 
7.0 MI
Ports Newark
and Elizabeth
- 
9.7 MI
Holland Tunnel
- 
11.4 MI
Lincoln Tunnel

Juan Disla

Director

973.379.6644 x 226

JD@blauberg.com

For additional property information or to arrange an inspection,
please contact the exclusive broker: