



BUSINESS CENTRE SUITES

SUMMARY

- Secure gated site with CCTV
- 1/2 mile from A580 East Lancs Road
- On-Site Parking
- 24/7 Access
- Flexible suite options
- Impressive atrium reception

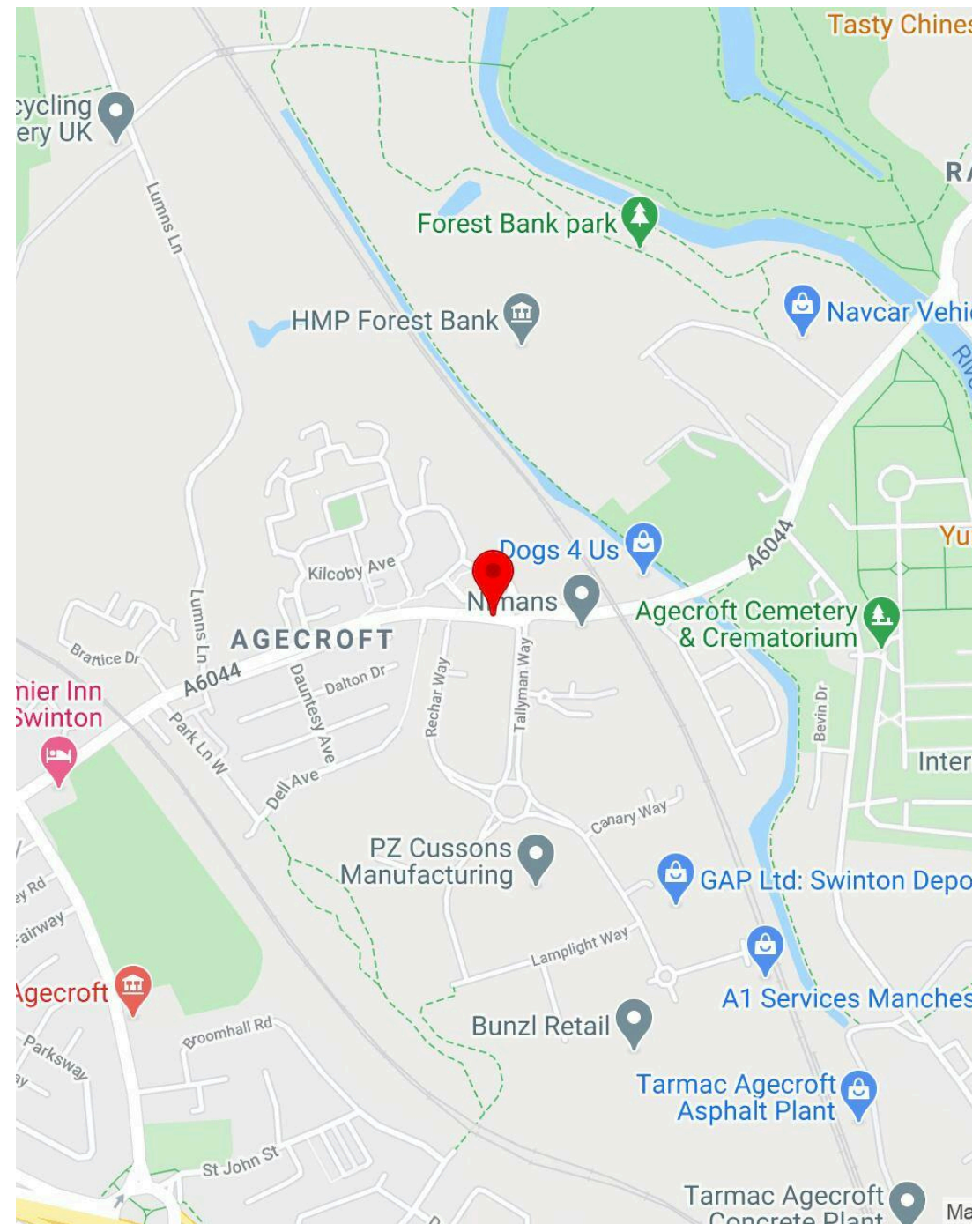
DESCRIPTION

Grosvenor House is a two-storey, purpose-built office building dating from the 1980s, offering approximately 10,000 sq ft of professionally finished workspace. Visitors enter through a dramatic full-height atrium, complete with lift access and gender-specific restroom facilities. Suites are available from 230 sq ft to 264 sq ft, with the flexibility to combine spaces as required. Interiors benefit from features such as gas central heating, suspended ceilings with Cat 2 lighting, double glazing, and shared tenant amenities. The site includes a spacious, secure car park and is monitored by CCTV, ensuring privacy and access control.



LOCATION

Situated on Agecroft Enterprise Park, 1 mile east of Swinton town centre and 2 miles west of Prestwich, the property enjoys a highly strategic location. It's just 0.5 miles from the A580 East Lancashire Road, providing swift links across Greater Manchester and toward Liverpool. Manchester city centre is accessible within a 10-minute drive, while nearby Bury and Bolton can be reached in under 20 minutes.



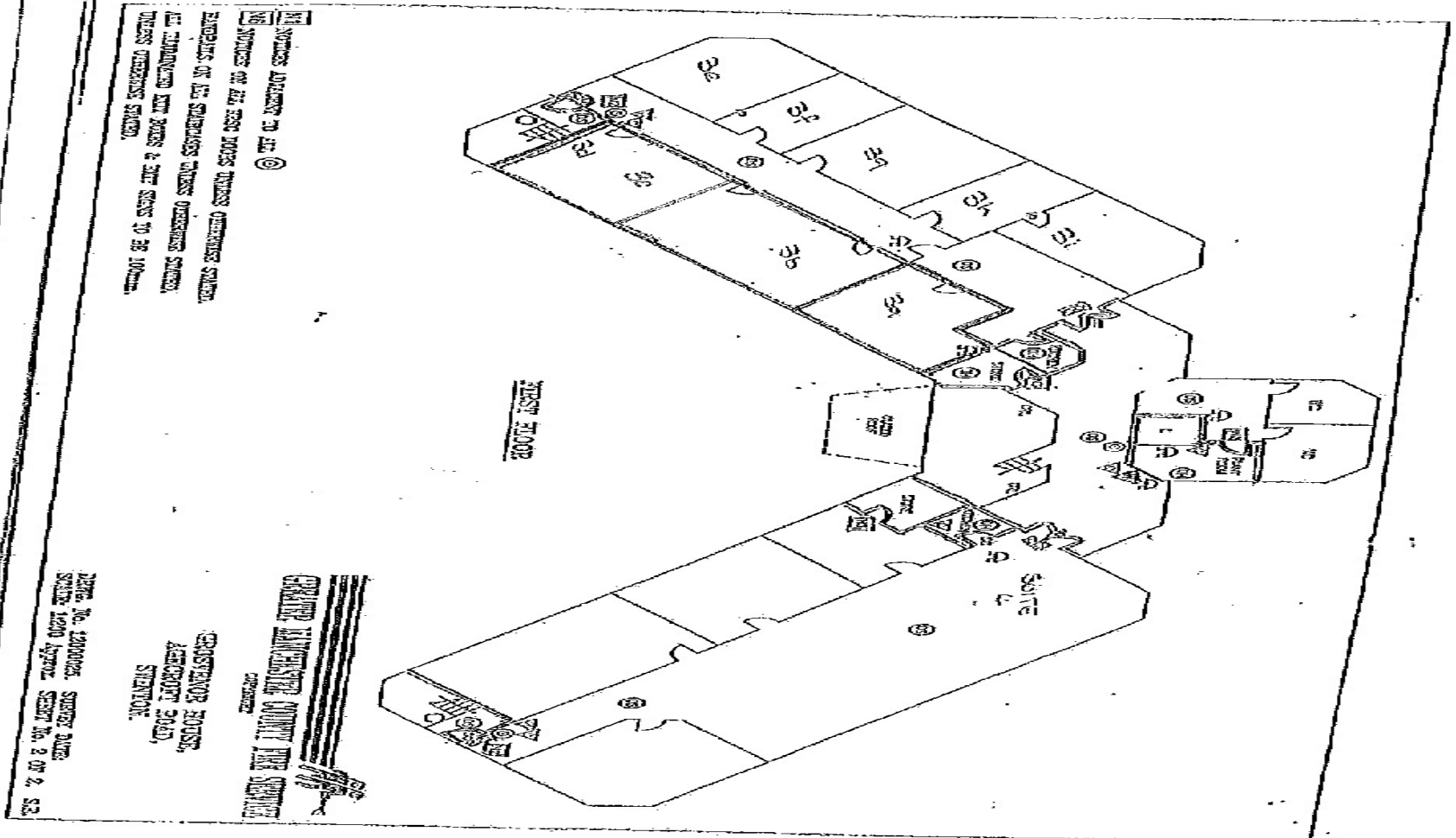
Grosvenor House



Grosvenor House



GROSVENOR HOUSE FIRST FLOOR PLAN.PDF



THIS PLAN IS A COPY OF THE ORIGINAL DRAWING
 AND IS NOT TO BE USED FOR CONSTRUCTION
 WITHOUT THE WRITTEN PERMISSION OF THE ARCHITECT
 © 1998 BY THE ARCHITECT

DRAWN BY: J. J. JONES, SURVEYOR
 SCALE: 1/200
 SHEET NO. 2 OF 2, S2

ARCHITECTS
 100, GOSWELL ROAD,
 STAMFORD
 LEICESTERSHIRE

GROSVENOR HOUSE
 100, GOSWELL ROAD,
 STAMFORD
 LEICESTERSHIRE

BOOTE LIFTE

VAT

All figures quoted are exclusive of, but will be liable for, VAT at the prevailing rate.

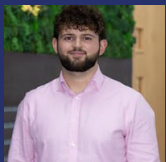
RATES

Any ingoing tenant will be responsible for the payment of business rates levied on the demise by the local rating authority.

EPC

C (68)

TO ARRANGE A VIEWING, PLEASE CONTACT



Oliver Brown

0161 220 1999 | 07955 283 889

oliver.brown@hurstwoodholdings.com



Raphael Goldberg

0161 220 1999 | 07795575613

Raphael.Goldberg@hurstwoodholdings.com



HURSTWOOD HOLDINGS



BUSINESS CENTRE SUITES

