



CLT
LOGISTICS
CENTER



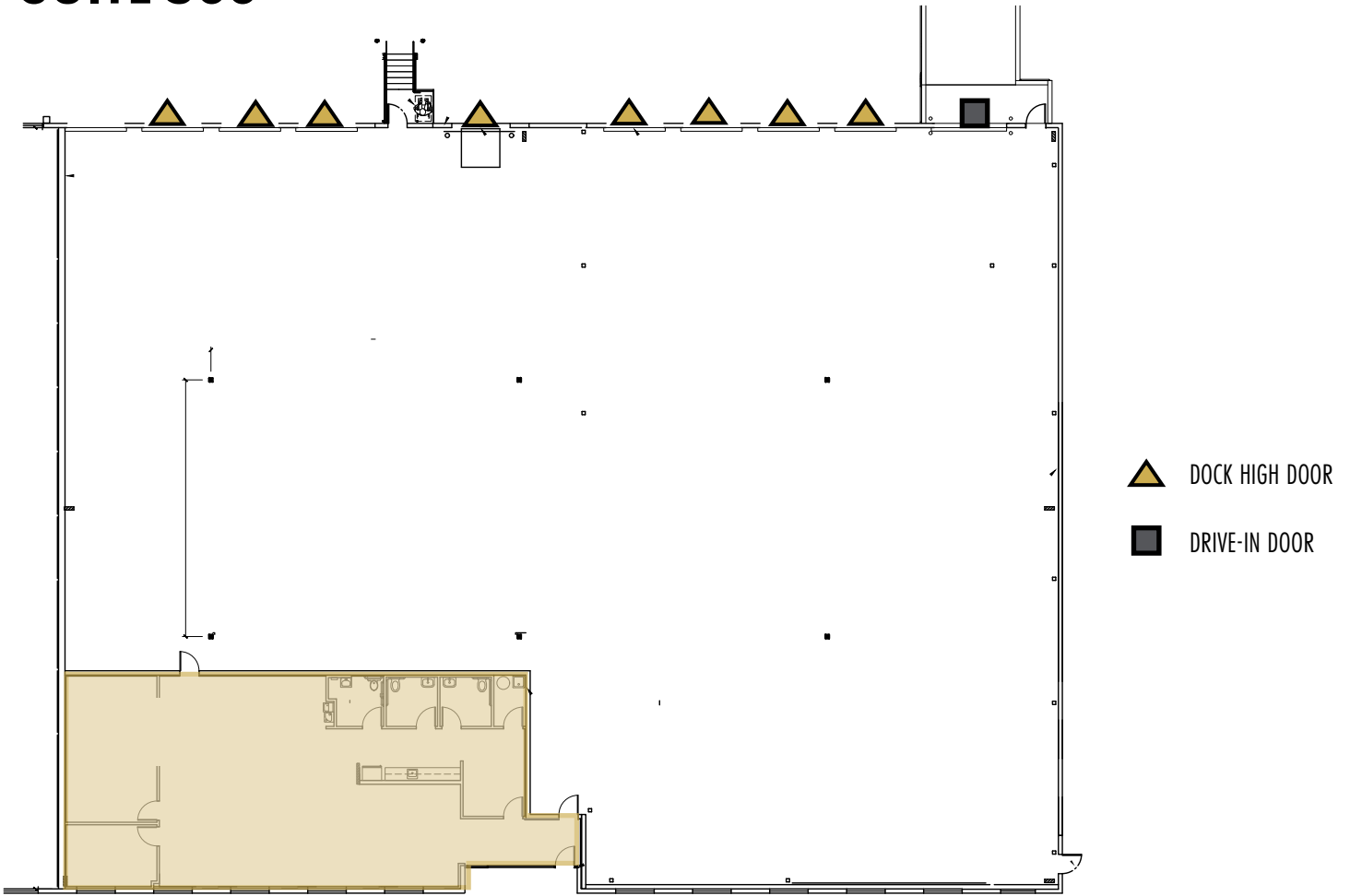
3401 INTERNATIONAL AIRPORT DR
SUITE 500

CHARLOTTE, NORTH CAROLINA

THE
MERITEX
COMPANY
ESTD 1916

18,712 SF AVAILABLE FOR LEASE

3401 INTERNATIONAL AIRPORT DR
SUITE 500



16,075 SF WAREHOUSE
2,637 SF OFFICE

18,712 SF Total

SPACE FEATURES

18,712 SF Total Available

- 16,075 SF Warehouse
- 2,637 SF Office
- Up to 8 Dock Doors
- 1 Ramped Drive In
- Wet Sprinkler System
- 18' Clear Height
- I-2 Zoning
- Fenced Truck Court
- 600 Amp Power Service



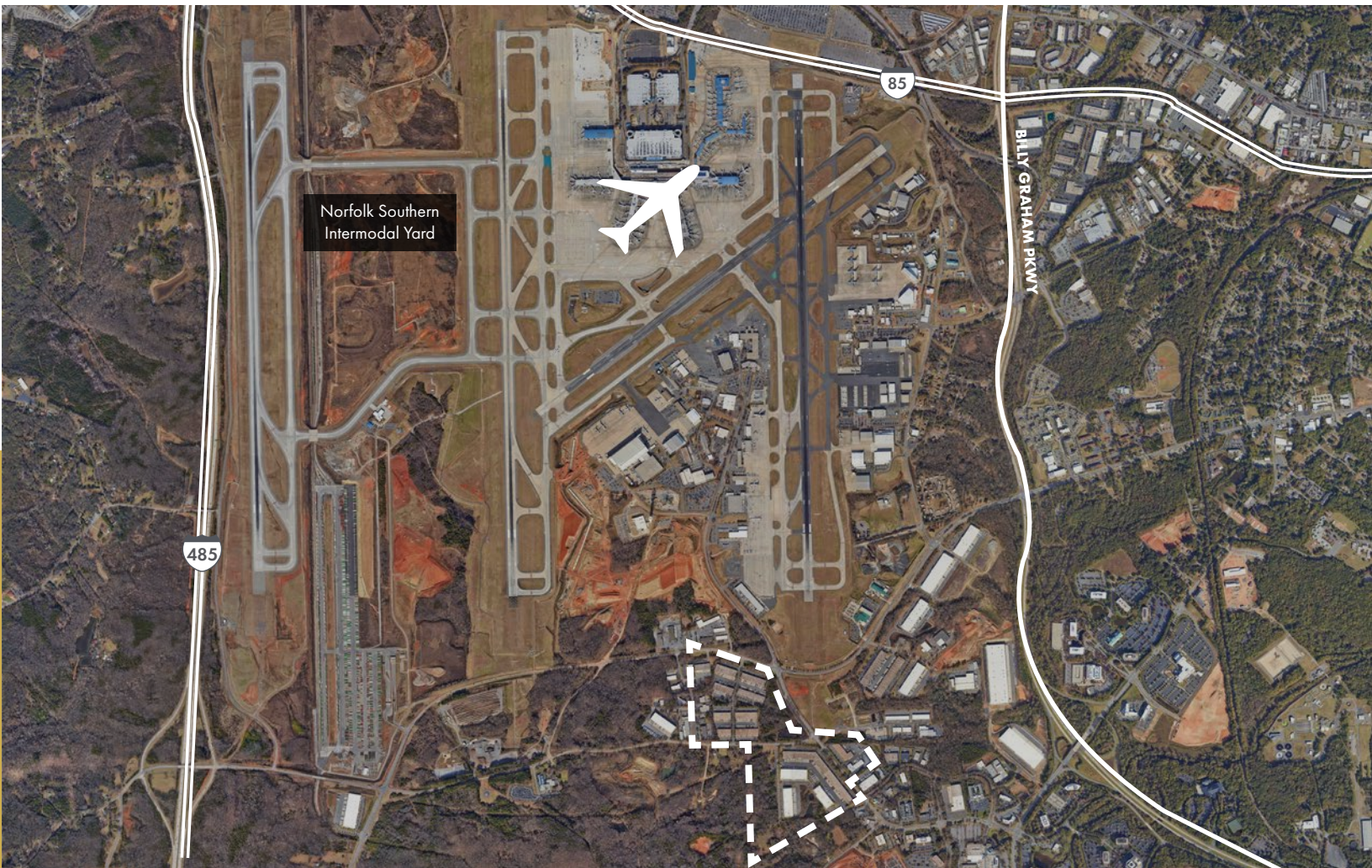
THE
MERITEX
COMPANY
ESTD. 1916

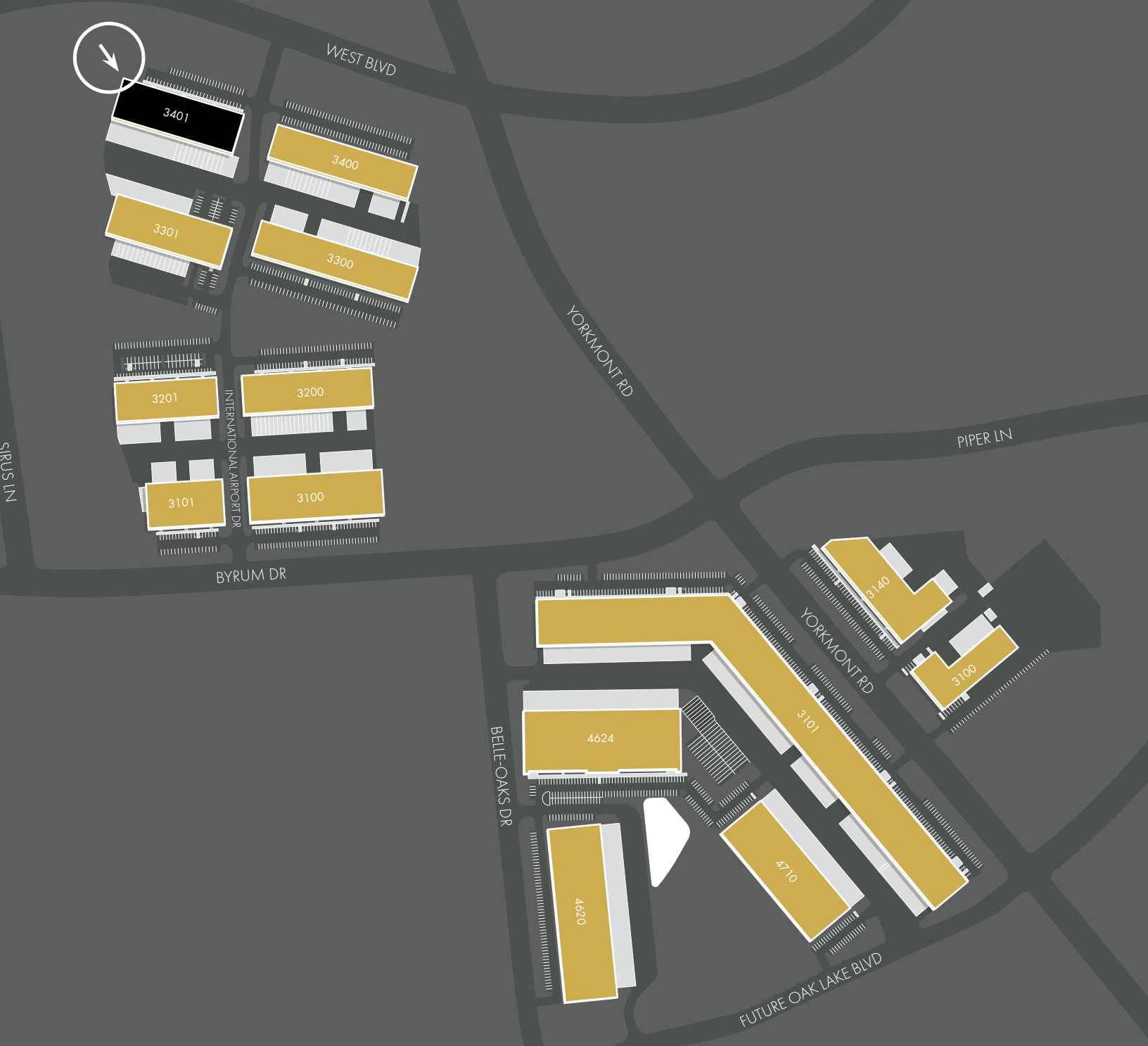
OWNERSHIP - THE MERITEX COMPANY

Meritex is a 109-year-old, family-owned company with a focus on light industrial properties, committed to providing exceptional spaces and service, allowing businesses to focus on their work at hand. Meritex strategically expands within key markets, ensuring that their properties and growth rate are in sync with their tenant's needs and ambitions. And once you're in a Meritex building, you can be assured that an expert local team is on hand when you need them.

CLT  **LOGISTICS**
CENTER

CLT Logistics is a 797,342 square foot light industrial park with 14 Class A buildings. It is located just south of Charlotte Douglas International Airport with easy access to I-77, I-85 and I-485. The buildings feature suppression systems, dock high loading, drive-in doors, and generous parking.





SUITE NO.	TENANT	SF
3401	INTERNATIONAL AIRPORT DRIVE	43,345
3400	INTERNATIONAL AIRPORT DRIVE	42,088
3301	INTERNATIONAL AIRPORT DRIVE	40,920
3300	INTERNATIONAL AIRPORT DRIVE	46,977
3400	INTERNATIONAL AIRPORT DRIVE	42,000
3201	INTERNATIONAL AIRPORT DRIVE	31,725
3200	INTERNATIONAL AIRPORT DRIVE	41,146
3101	INTERNATIONAL AIRPORT DRIVE	28,138
3100	INTERNATIONAL AIRPORT DRIVE	50,356
3140	YORKMONT RD	43,341
3100	YORKMONT RD	22,111
3101	YORKMONT RD	192,874

FOR MORE INFORMATION, PLEASE CONTACT:

CASEY MULHERN

Senior Vice President

704.705.1182

casey.mulhern@foundrycommercial.com

BRIAN CRAVER, CCIM

Senior Vice President

704.319.5072

brian.craver@foundrycommercial.com

RICHARD COEN

Associate

843.696.6700

richard.coen@foundrycommercial.com