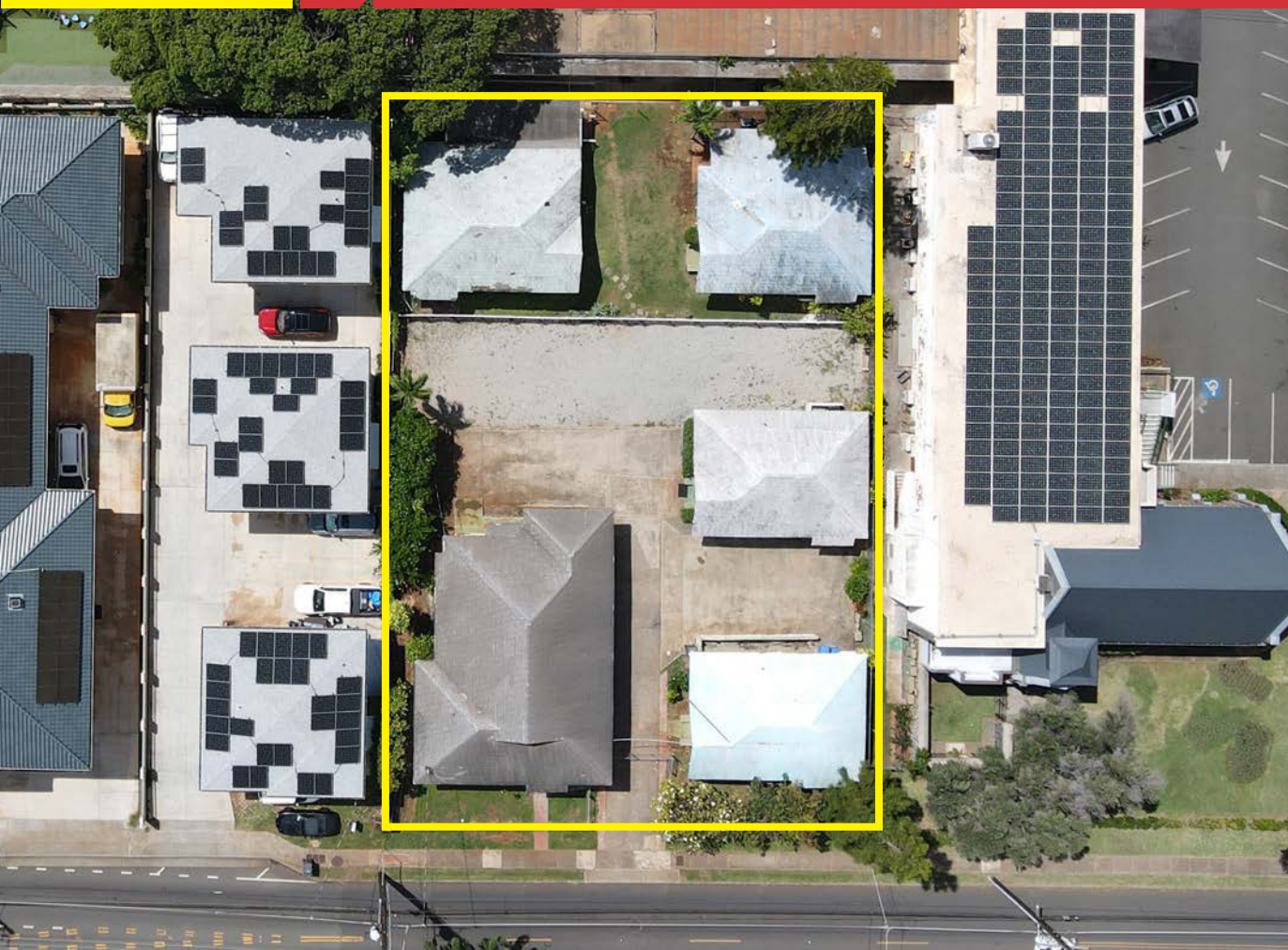


**FOR
SALE**



3513 Harding Ave. Honolulu, HI 96816

Rare Kaimuki Multi-Cottage Property



ASKING PRICE: \$3,000,000

Located in the heart of Kaimuki, 3513 Harding Ave. presents a rare opportunity to acquire a multi-cottage investment property on a 15,000 SF lot. The property consists of five separate cottages totaling approximately 3,828 SF, offering flexible use potential for investors, owner-users, or future redevelopment considerations.

Positioned just minutes from the H-1 freeway onramp, the property provides convenient access to Waikiki, Downtown Honolulu, and the greater Honolulu area. The gated lot includes ample onsite parking and benefits from strong surrounding residential and commercial demographics in one of Honolulu's most established neighborhoods.

POTENTIAL USES:

- Multi-generational housing
- Investment Property
- Owner-user opportunity
- Redevelopment potential



Taryn Taylor (S)
RB-85465
808-282-4583
ttaylor@cbi-hawaii.com

NAI CBI Hawaii
1712 S. King Street Suite 201
Honolulu, HI 96826 808.942.7100 |
www.cbi-hawaii.com





INVESTMENT HIGHLIGHTS

- 5 Separate cottages
- Compound-style property
- Approximately 3,828 SF of building area
- 15,000 SF lot
- Zoned R-5
- Gated on-site parking
- Prime Kaimuki location
- Great investment for potential rental income, possible CPR and/or subdivision

INVESTMENT SUMMARY

Address: 3513 Harding Ave

TMK: 1-3-2-13-14

Zoning R-5

Building Size: 3,828 SF total

Land Size: 15,000 SF



Taryn Taylor (S)
RB-85465
808-282-4583
ttaylor@cbi-hawaii.com

NAI CBI Hawaii
1712 S. King Street Suite 201
Honolulu, HI 96826 808.942.7100 |
www.cbi-hawaii.com





Taryn Taylor (S)
RB-85465
808-282-4583
ttaylor@cbi-hawaii.com





Taryn Taylor (S)
RB-85465 808-
282-4583
ttaylor@cbi-hawaii.com

NAI CBI Hawaii 1712 S. King
Street Suite 201 Honolulu, HI 96826
808.942.7100 |

www.cbi-hawaii.com

