

N McDonough Street

Montgomery, Alabama 36104

Approximately 14.23 Acres Available



Property Highlights

- + 14.23 acres
- + Great for outdoor storage or to build new building
- + Potential rail access
- + Utilities accessible
- + Heavy Industrial Zoning
- + Easy access to I-65 and I-85

Site Aerial



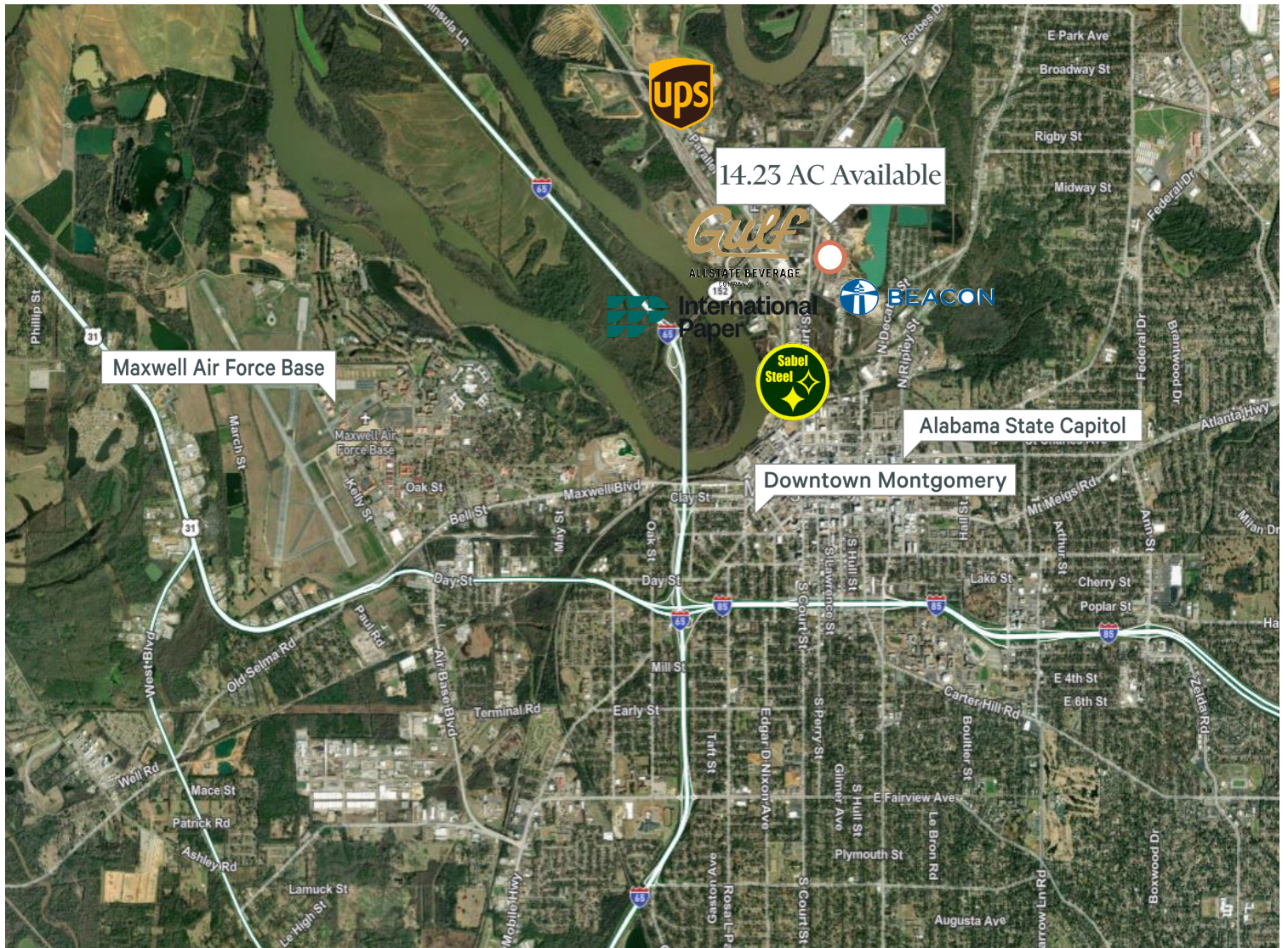
Contact Us

Philip Yost
Senior Vice President
+1 205 262 4701
philip.yost@cbre.com

Surrounding Area

Property Overview

Discover a prime 14.23-acre property located in Montgomery, Alabama, ideal for outdoor storage or the construction of a new building. With heavy industrial zoning and potential rail access, this site offers exceptional opportunities for businesses seeking space in a strategic location. Utilities are readily accessible, ensuring a seamless development process. Enjoy easy access to major interstates I-65 and I-85, making this property a perfect choice for logistics and industrial operations. Don't miss out on this valuable investment opportunity in a thriving area!



© 2024 CBRE, Inc. All rights reserved. This information has been obtained from sources believed reliable, but has not been verified for accuracy or completeness. You should conduct a careful, independent investigation of the property and verify all information. Any reliance on this information is solely at your own risk. CBRE and the CBRE logo are service marks of CBRE, Inc. All other marks displayed on this document are the property of their respective owners, and the use of such logos does not imply any affiliation with or endorsement of CBRE. Photos herein are the property of their respective owners. Use of these images without the express written consent of the owner is prohibited.