

361 SYCAMORE ROAD
GENOA, IL

ENTRE
Commercial Realty LLC



For Sale or Lease

AVAILABLE: 12,000 SF

AVAILABLE SIZE:	12,000 SF
LAND AREA:	1.85 ACRES
OFFICE SIZE:	1,500 SF
CONSTRUCTION:	STEEL/MASONRY
PARKING:	44 SPACES
YEAR BUILT:	2007
CEILING HEIGHT:	16'
POWER:	800 AMPS
LOADING:	DRIVE-IN DOOR
SPRINKLERED:	NO
ZONING:	B-2
RE TAXES	\$25,023.88 (PAID IN 2026)

LEASE RATE: \$9.95 PSF NNN

SALE PRICE: SUBJECT TO OFFER


Drive-In
Door



Freestanding
Retail



Located on IL
Rt. 23 within
a Retail
Corridor


Outside
Storage

Presented By:

➤ **Mike Deserto**
224-588-3026
mdeserto@entreccommercial.com

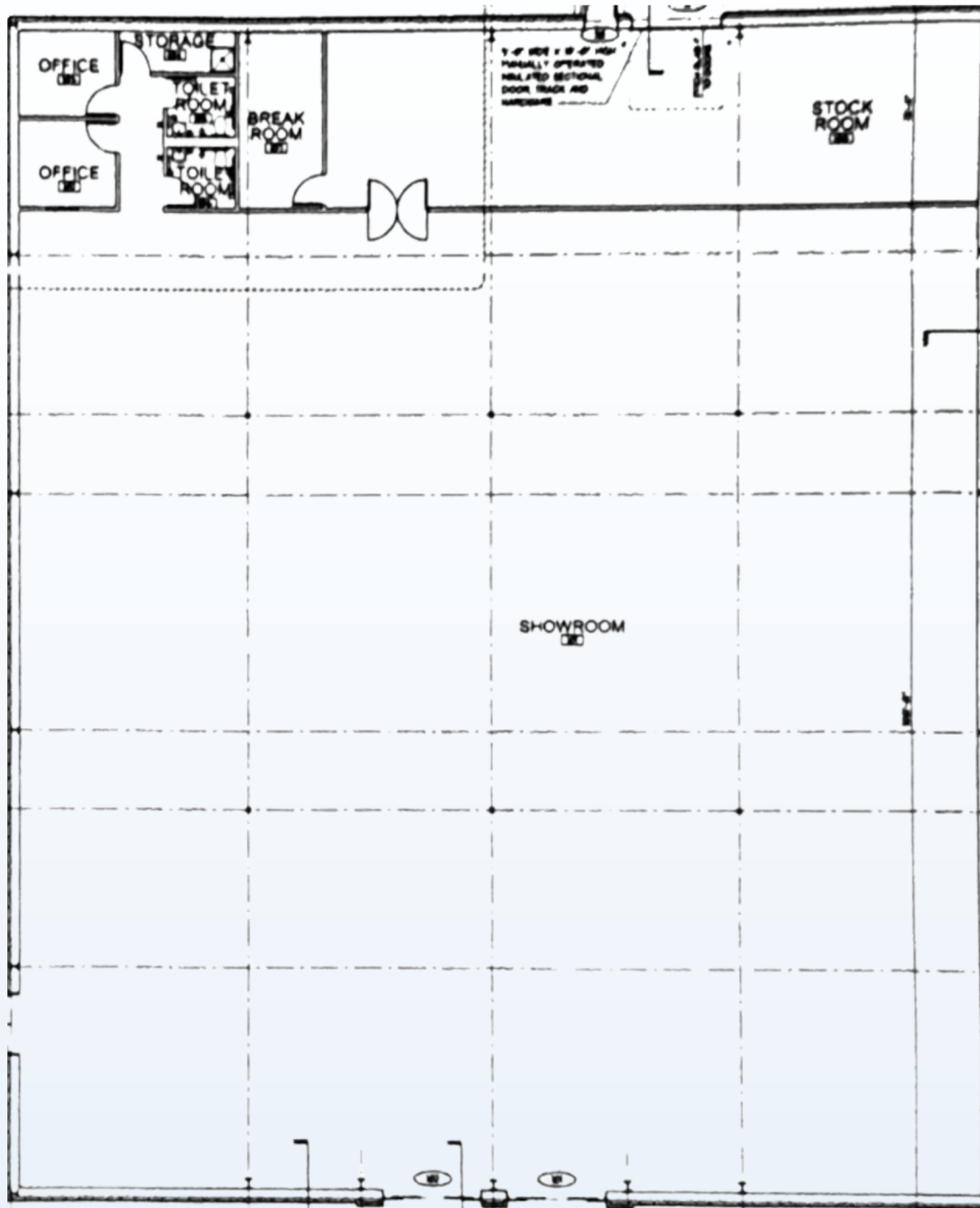
➤ **Cory Kay**
224-532-2497
ckay@entreccommercial.com

➤ **Elisabeth Lazzara**
847-310-4209
elazzara@entreccommercial.com

 entreccommercial.com

The information contained herein is from sources deemed reliable but is submitted subject to errors, omissions and to change of price or terms without notice. Members of this firm have an ownership interest in this property.

Floor Plan



ENTRE
Commercial Realty LLC

Mike Deserto

224-588-3026

mdeserto@entrecommercial.com

Cory Kay

224-532-2497

ckay@entrecommercial.com

Elisabeth Lazzara

847-310-4209

elazzara@entrecommercial.com



Location

**361 SYCAMORE ROAD
GENOA, IL**

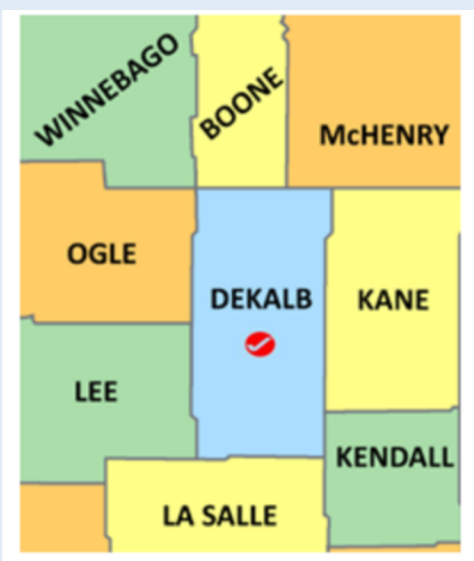
\$
Low Dekalb Taxes

INTERSTATE
9 Miles to I-90



VPD: 7,200

AREA TENANCY



DeKalb County

Located as the western anchor of the booming I-88 Corridor within the Chicago metropolitan area, DeKalb County offers strategic access to major interstates, Class I rail lines, and regional airports. With a legacy of innovation, a rapidly expanding data center and logistics sector, and the intellectual capital of Northern Illinois University, the region provides a premier environment for advanced manufacturing, technology, and long-term economic investment.

3350 Salt Creek Lane, Suite 104
Arlington Heights, IL 60005

