



**FOR LEASE
OFFICE SPACE**

401 CHURCH STREET & 159 4TH AVE FLOOR PLANS

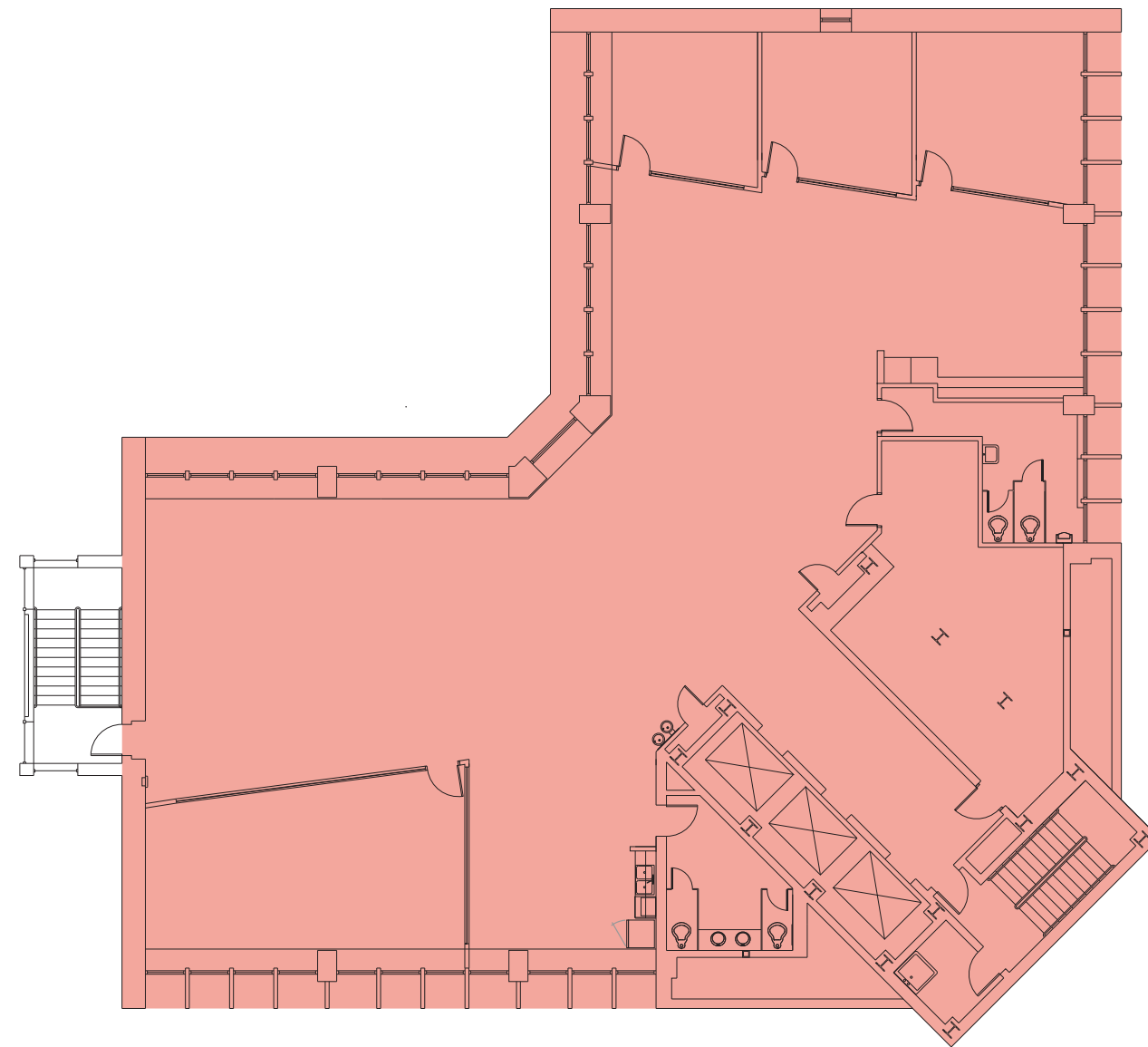




SUITE 1900

5,790 SF

AVAILABLE NOW





DAN BAUCHIERO

Dan.Bauchiero@foundrycommercial.com
615.423.6851

SHELBY HALL

Shelby.Hall@foundrycommercial.com
615.771.0770