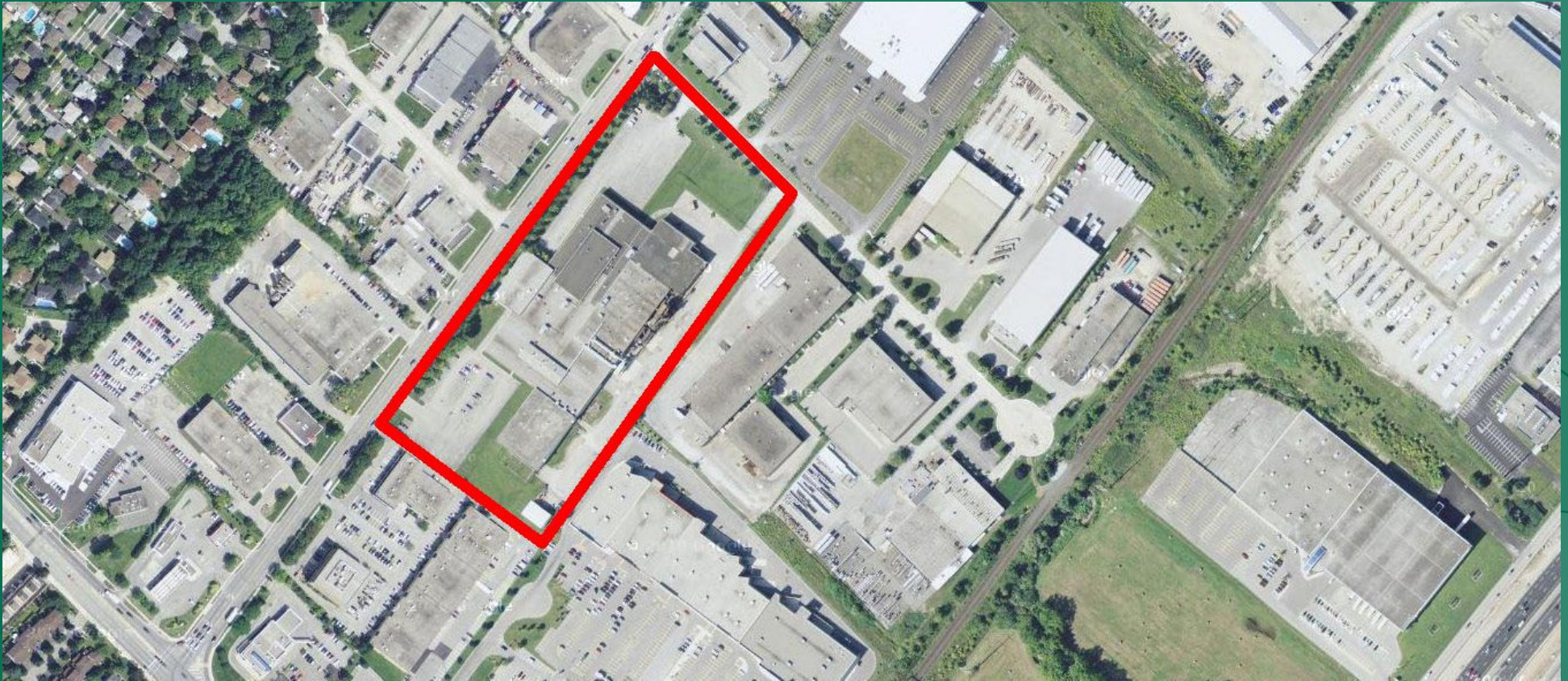


Multi Unit Industrial - For Lease

3100 Mainway Drive, Burlington, Ontario

Cost effective manufacturing/warehouse space in the heart of the Guelph Line/QEW retail commercial node



Features

- 172,000 SF total area on 12 acres with ample parking and shipping
- 23,000 SF of office space on 2 floors
- GE1 zoning
- Lease Rates From: \$6.25/SF Net, TMI: \$2.25/SF
- Two street frontages, quick QEW access at Guelph Line
- Up to 20' clear height

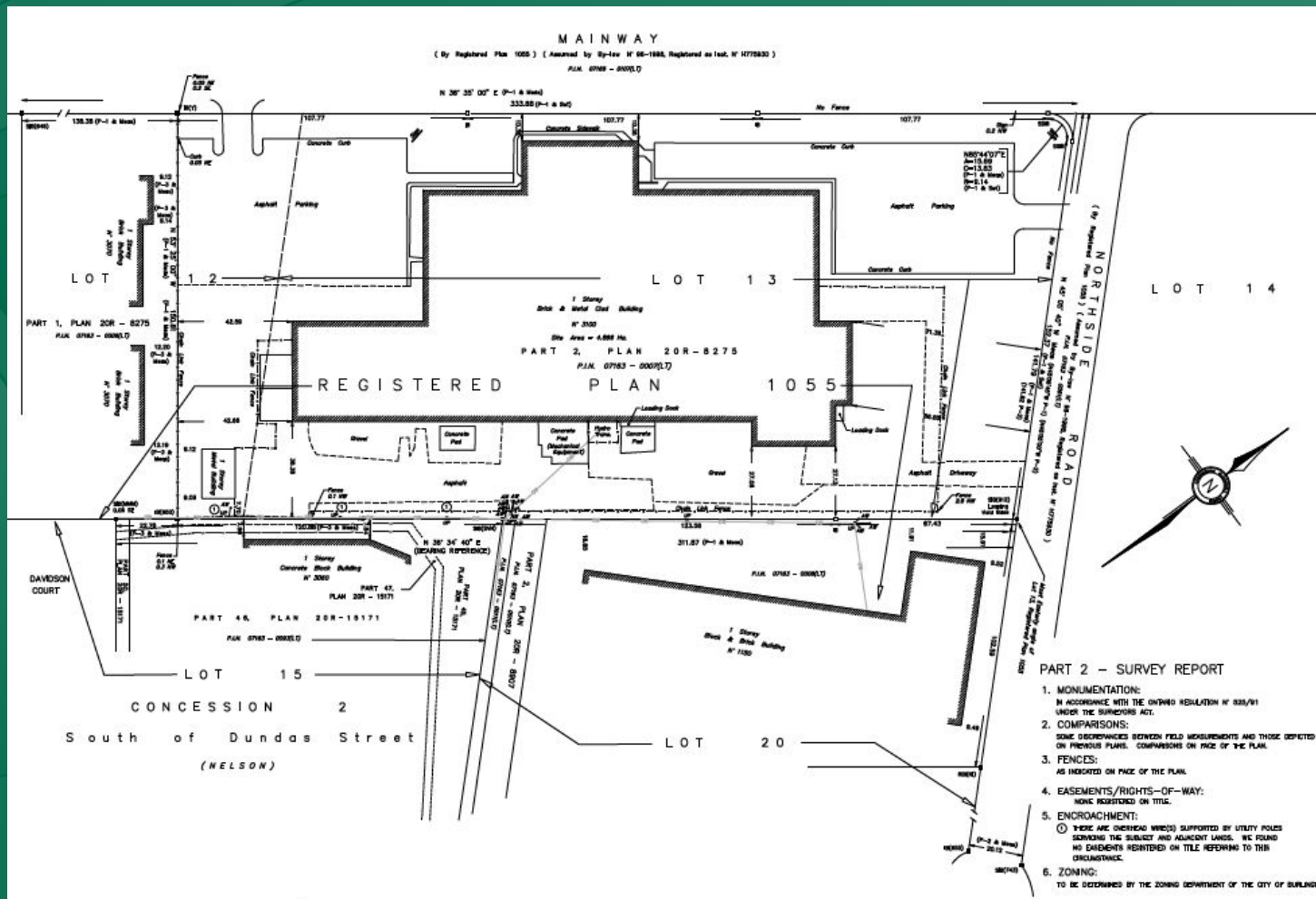
Multi Unit Industrial - For Lease

3100 Mainway Drive, Burlington, Ontario

Cost effective manufacturing/warehouse space in the heart of the Guelph Line/QEW retail commercial node



303-1425 Cormorant Rd
Ancaster ON L9G 4V5



Survey

The information contained herein is provided by the building owner or their agents or representatives and although such information has been obtained from sources considered to be reliable, Blair Blanchard Stapleton Limited makes no representation or warranty as to the accuracy or completeness thereof. The information contained herein is subject to change without notice.

Multi Unit Industrial - For Lease

3100 Mainway Drive, Burlington, Ontario

Cost effective manufacturing/warehouse space in the heart of the Guelph Line/QEW retail commercial node



303-1425 Cormorant Rd
Ancaster ON L9G 4V5



The information contained herein is provided by the building owner or their agents or representatives and although such information has been obtained from sources considered to be reliable, Blair Blanchard Stapleton Limited makes no representation or warranty as to the accuracy or completeness thereof. The information contained herein is subject to change without notice.

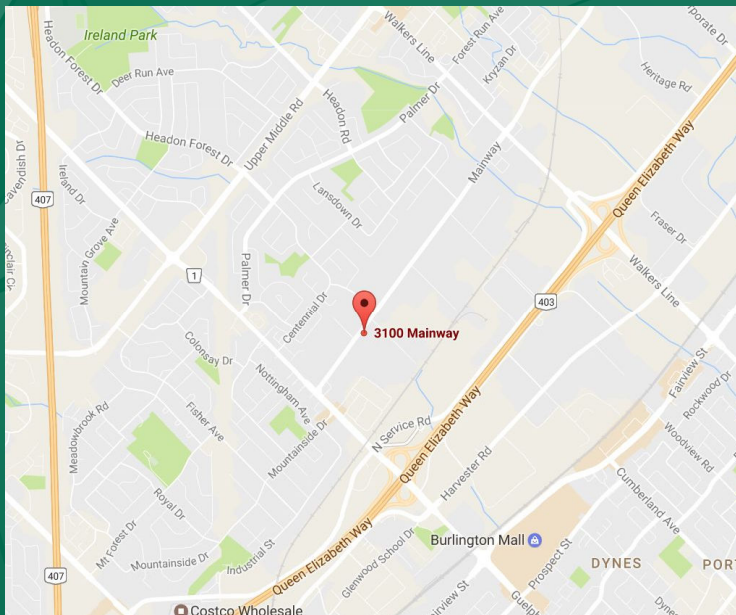
Multi Unit Industrial - For Lease

3100 Mainway Drive, Burlington, Ontario

Cost effective manufacturing/warehouse space in the heart of the Guelph Line/QEW retail commercial node



BLAIR
BLANCHARD
STAPLETON LIMITED
REAL ESTATE BROKERAGE
303-1425 Cormorant Rd
Ancaster ON L9G 4V5



Contact Us

Paul Mariutti

Sales Representative

Tel: 905.529.5900 Ext. 212

Email: mariutti@bbsrealty.com

John MacNamara

Sales Representative

Tel: 905.529.5900 Ext. 211

Email: macnamara@bbsrealty.com

www.bbsrealty.com

Adjacent to Home Depot, Montana's, Bad Boy, Staples, Future Shop, Royal Bank etc.

The information contained herein is provided by the building owner or their agents or representatives and although such information has been obtained from sources considered to be reliable, Blair Blanchard Stapleton Limited makes no representation or warranty as to the accuracy or completeness thereof. The information contained herein is subject to change without notice.