

OFFICE SPACE FOR LEASE



MAITLAND GREEN II

2290 Lucien Way
Maitland, FL 32751

Maitland Green II is a 4-story Class A office building with approximately 84,000 RSF and 4,308 RSF of available space.

Located in the highly desirable Maitland Center Office Park, this corporate building provides efficient office suites for all professional businesses.

**CLASS A
OFFICE SPACE**

**Space Available
4,308 SF**

[Virtual Tour](#)

[Drone Video](#)



For more information, contact:
[Damien Madsen](#)
(407) 256.2844
DMadsen@harbertrealty.com

[Josh Smith, SIOR](#)
(407) 739.8602
JSmith@harbertrealty.com

Property Owned &
Operated by:



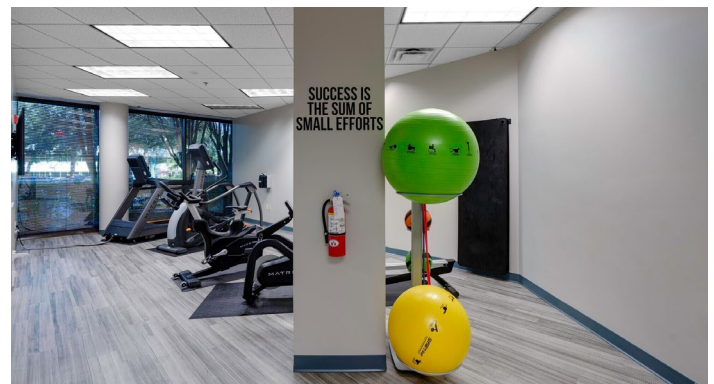
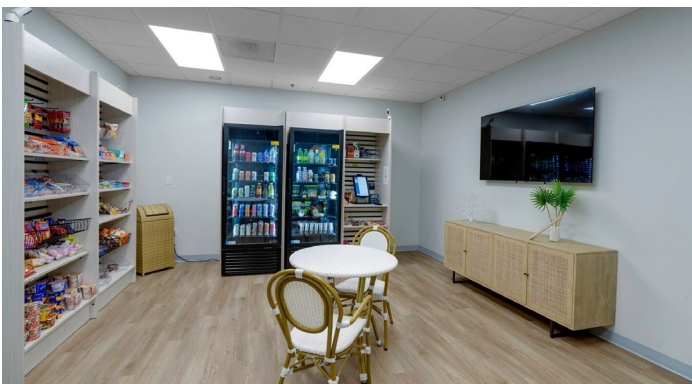
SPACE AVAILABLE

Suite	RSF
280	4,308 Available 7/1/26



BUILDING FEATURES & AMENITIES

- 84,000 RSF Class A 4-Story Building
- On-Site Institutional Property Management
- 4/1000 Parking Ratio
- Brand New Fitness Facility Located in Adjacent Building
- Building Grab-N-Go Cafe Located in Adjacent Building
- Large Centrally Located Courtyard



For more information, contact:
Damien Madsen
(407) 256.2844
DMadsen@harbertrealty.com

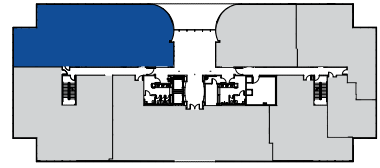
Josh Smith, SIOR
(407) 739.8602
JSmith@harbertrealty.com

Property Owned &
Operated by:

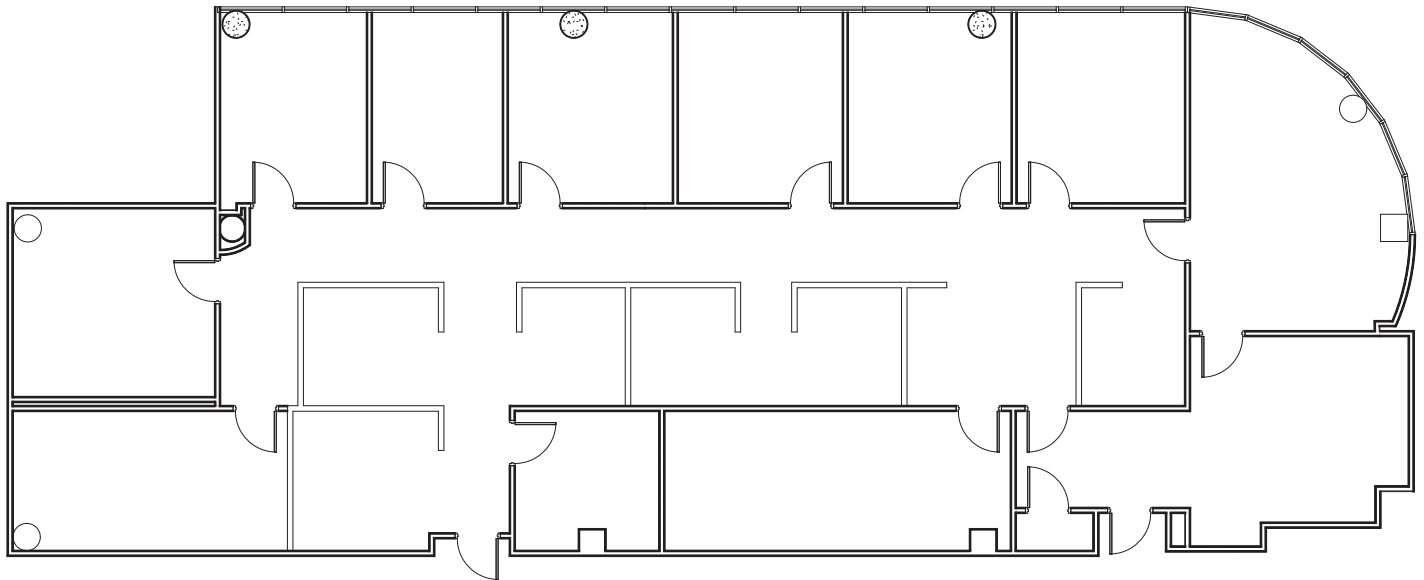


2nd
Floor

Suite 280: 4,308 RSF



Suite 280: 4,308 RSF

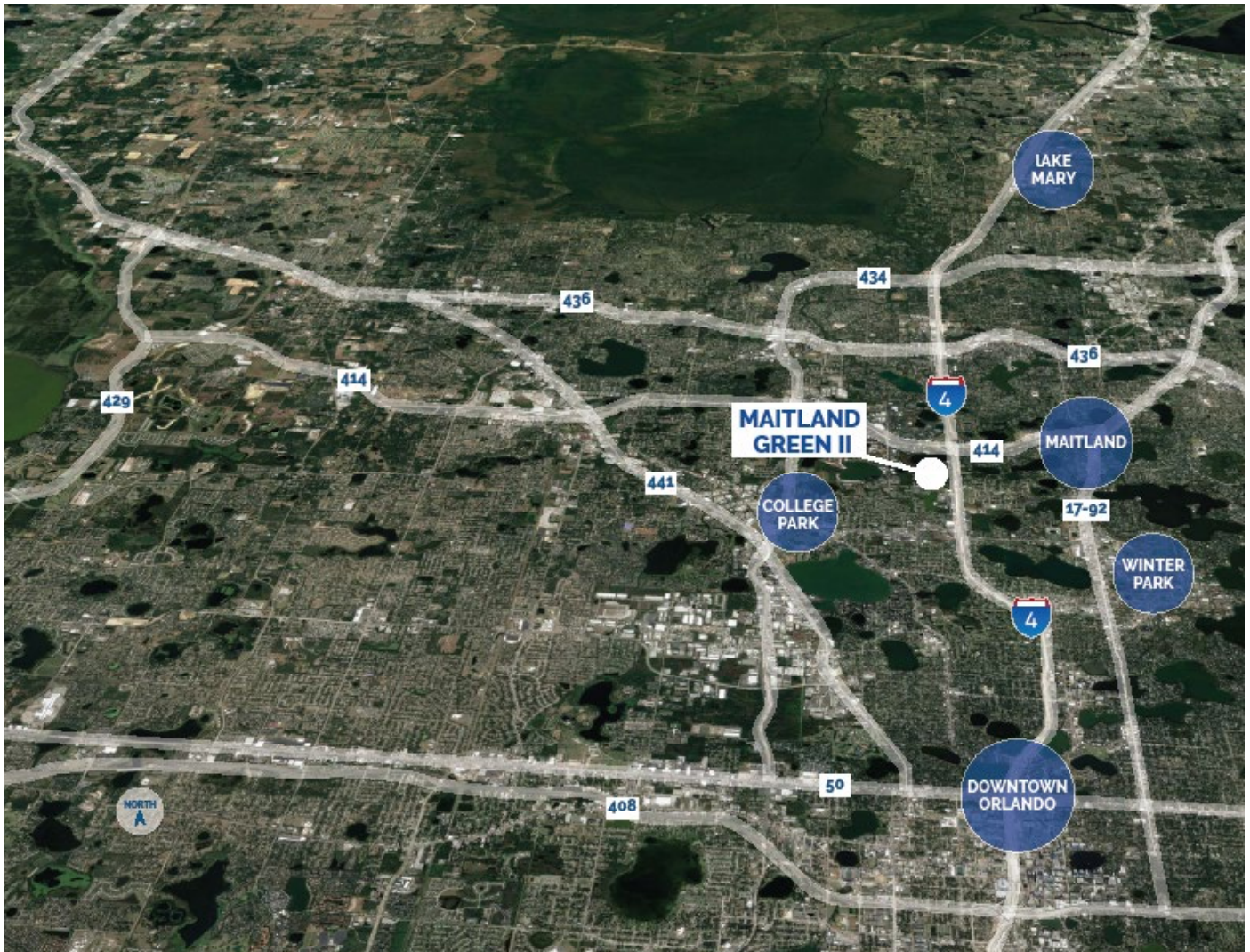


For more information, contact:
Damien Madsen
(407) 256.2844
DMadsen@harbertrealty.com

Josh Smith, SIOR
(407) 739.8602
JSmith@harbertrealty.com

Property Owned &
Operated by:





LOCATION HIGHLIGHTS

- Well-positioned within Maitland Center Office Park, one of Orlando's largest office submarkets
- Conveniently less than a half mile from I-4 & providing easy access to Downtown Orlando
- Close to business hotels, restaurants, retail and the RDV Sportsplex
- Ideally located in Central Florida's top executive housing market & the following established neighborhoods

- Maitland:	3-Miles
- Winter Park:	5-Miles
- College Park:	7-Miles
- Downtown:	8-Miles
- Lake Mary:	12-Miles

For more information, contact:
Damien Madsen
 (407) 256.2844
 DMadsen@harbertrealty.com

Josh Smith, SIOR
 (407) 739.8602
 JSmith@harbertrealty.com

Property Owned &
 Operated by:

