

7590 DIXIE HIGHWAY
CLARKSTON, MICHIGAN

OFFICE FOR SALE
3,500 Square Feet Available



**SIGNATURE
ASSOCIATES**
KNOW SIGNATURE | KNOW RESULTS



PROPERTY FEATURES

- 3,500 square feet available
- Well-maintained office/medical building
- Situated on a 1-acre site along highly traveled Dixie Highway
- The property features a functional layout with multiple private offices/exam rooms, reception area, and a finished lower level
- Ideal for medical, professional office, wellness user, owner-users or investors
- Ample on-site parking and excellent visibility with easy access to I-75 and surrounding retail amenities
- Contact broker for more information



For more information, please contact:

MARVIN PETROUS
(248) 359 0647
mpetrous@signatureassociates.com

JEFF LEMANSKI
(248) 359 0641
jlemanski@signatureassociates.com

SIGNATURE ASSOCIATES
One Towne Square, Suite 1200
Southfield, MI 48076
www.signatureassociates.com

7590 Dixie Highway – Clarkston, Michigan

Office For Sale

3,500
Square Feet
AVAILABLE

Interior Photos



For more information, please contact:

MARVIN PETROUS
(248) 359 0647
mpetrous@signatureassociates.com

JEFF LEMANSKI
(248) 359 0641
jlemanski@signatureassociates.com

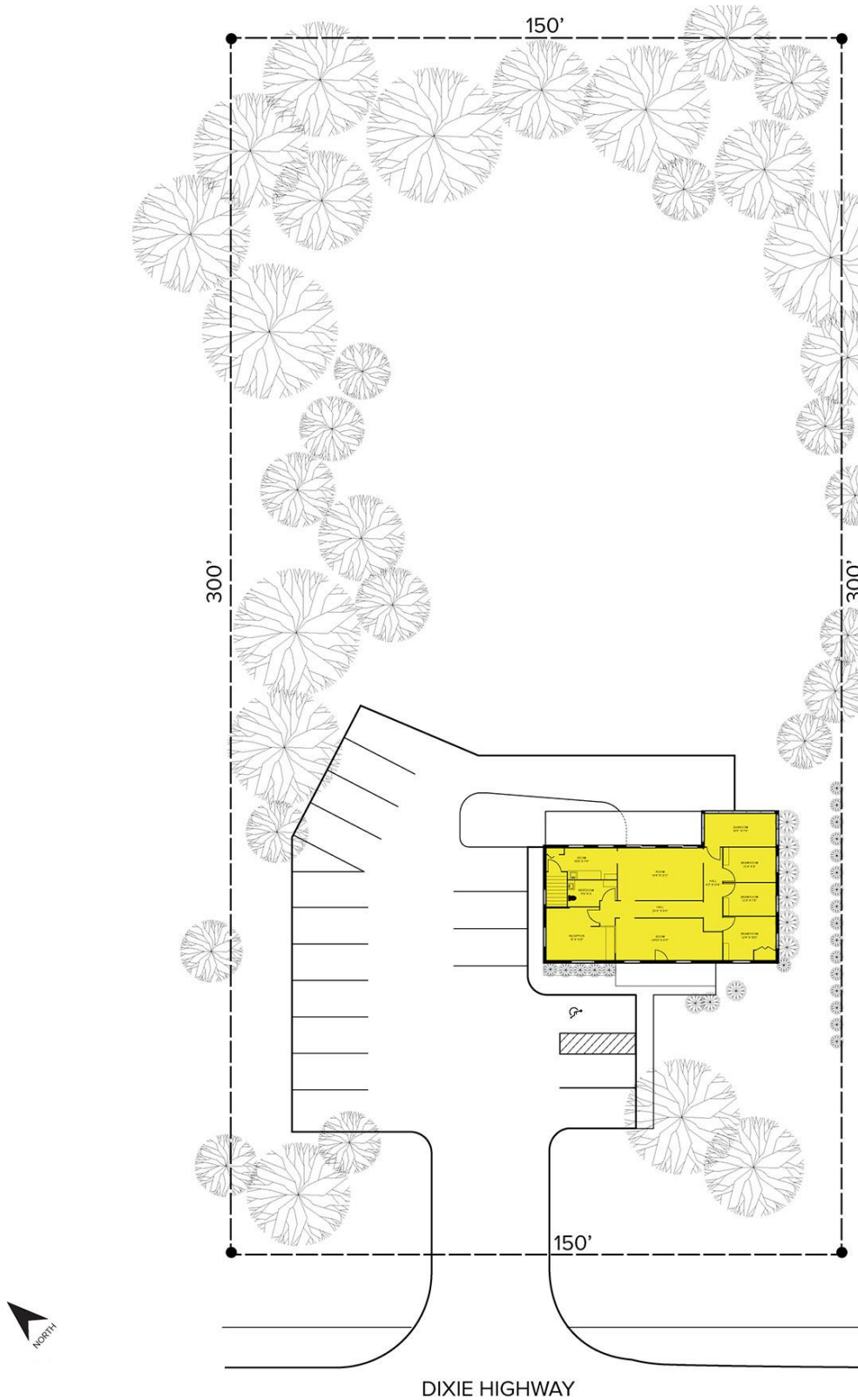
SIGNATURE ASSOCIATES
One Towne Square, Suite 1200
Southfield, MI 48076
www.signatureassociates.com

7590 Dixie Highway – Clarkston, Michigan

Office For Sale

3,500
Square Feet
AVAILABLE

Site Plan



For more information, please contact:

MARVIN PETROUS
(248) 359 0647
mpetrous@signatureassociates.com

JEFF LEMANSKI
(248) 359 0641
jlemanski@signatureassociates.com

SIGNATURE ASSOCIATES
One Towne Square, Suite 1200
Southfield, MI 48076
www.signatureassociates.com

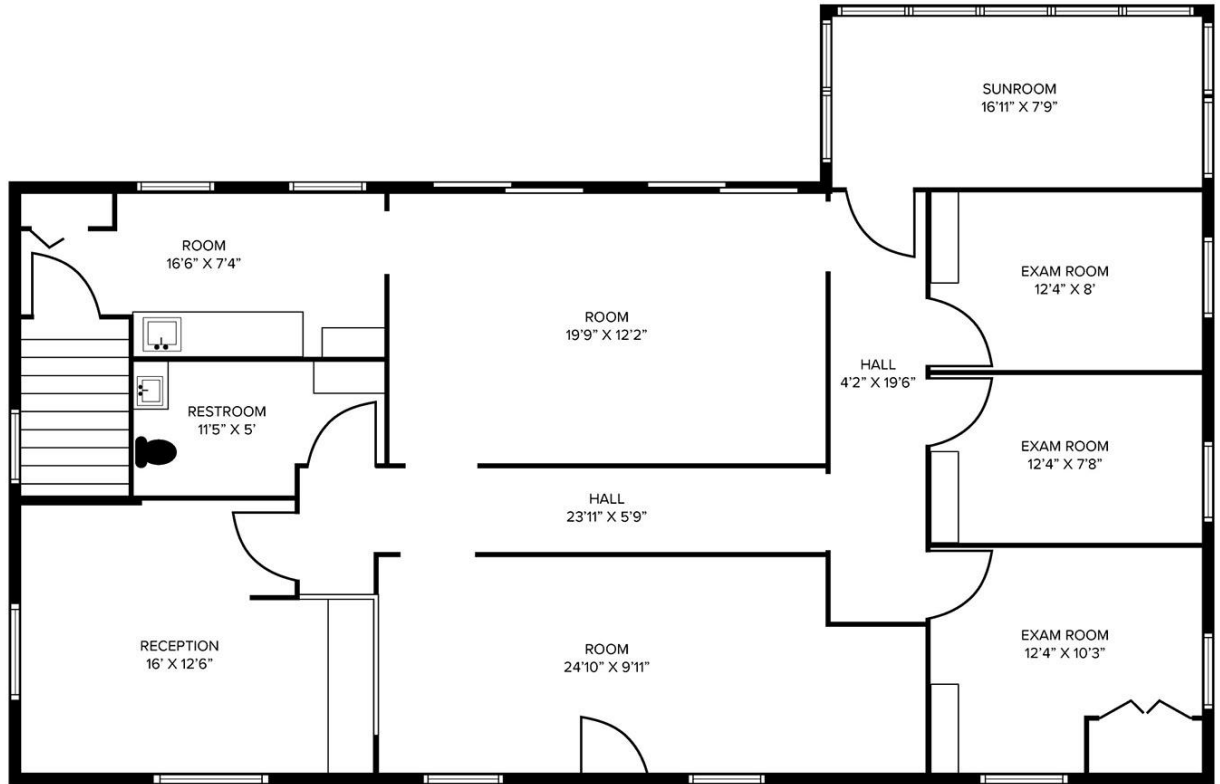
7590 Dixie Highway – Clarkston, Michigan

Office For Sale

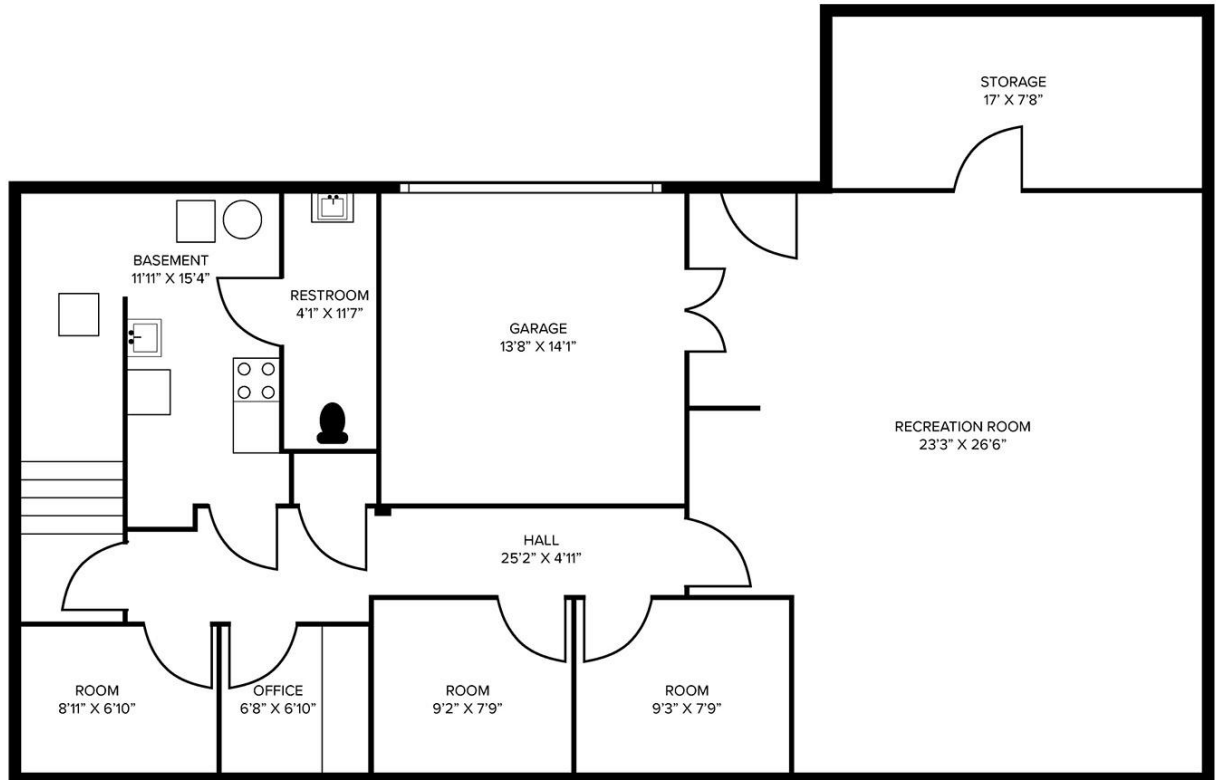
3,500
Square Feet
AVAILABLE

Floor Plan

MAIN FLOOR



LOWER LEVEL



For more information, please contact:

MARVIN PETROUS
(248) 359 0647
mpetrous@signatureassociates.com

JEFF LEMANSKI
(248) 359 0641
jlemanski@signatureassociates.com

SIGNATURE ASSOCIATES
One Towne Square, Suite 1200
Southfield, MI 48076
www.signatureassociates.com

7590 Dixie Highway – Clarkston, Michigan

Office For Sale

3,500
Square Feet
AVAILABLE

Aerial



For more information, please contact:

MARVIN PETROUS
(248) 359 0647
mpetrous@signatureassociates.com

JEFF LEMANSKI
(248) 359 0641
jlemanski@signatureassociates.com

SIGNATURE ASSOCIATES
One Towne Square, Suite 1200
Southfield, MI 48076
www.signatureassociates.com