

Office | For Sublease

CBRE

# 3803 N Elm Street

*Greensboro, North Carolina 27455*

[www.cbre.com/triad](http://www.cbre.com/triad)

±10,000 – 42,566 SF of Class-A Office Space in Desirable North Greensboro Location



# Property Overview

*Four-story suburban office building located in desirable North Greensboro submarket close to intersection of North Elm Street and Pisgah Church Road. The location has immediate interchange access to I-840 (Greensboro Urban Loop) as well as close proximity to high-end retail including restaurants, banking, shopping, and grocery stores. Elm Street provides direct and quick access to downtown while I-840 allows direct access to PTI Airport.*

## Building Highlights

- **Building Size:** 165,409 SF
- **Available Space:** 4th Floor, 10,000 SF - 42,566 SF
- **Parking Ratio:** 5.8 spaces/1,000 SF
- **Year Built:** 2000
- **Lease Expiration:** 12/31/2033
- **Lease Rate:** Call for pricing



# Floor Plan

10,000 - 42,566 SF Available

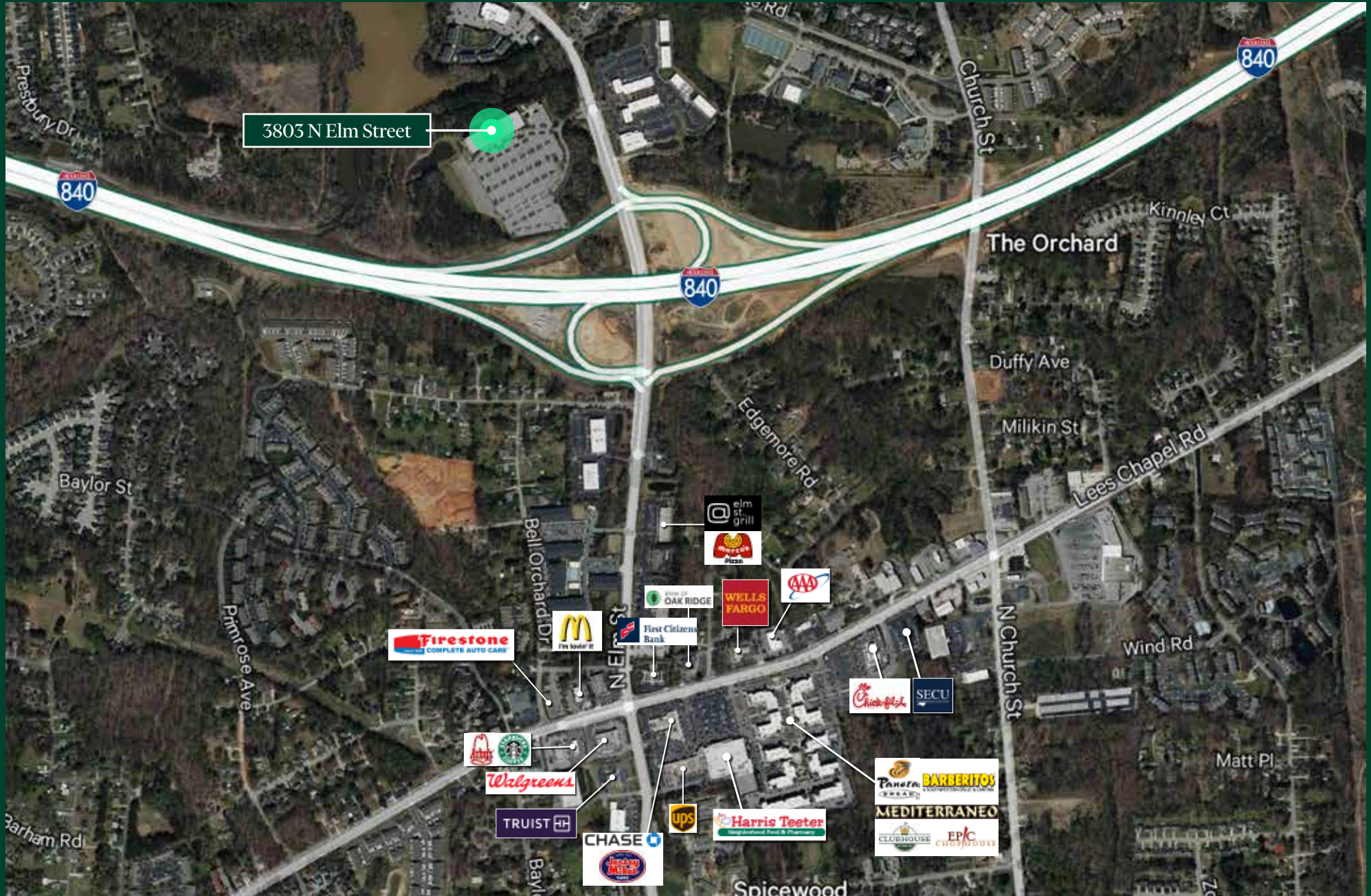
## 4TH FLOOR



# Property Photos



# Location Overview



3803 N Elm Street  
Greensboro, NC 27455

FOR SUBLEASE

3803 N Elm Street  
Greensboro, North Carolina 27455

FOR SUBLEASE



## Contact Us

**Greg Wilson**  
Executive Vice President  
+1 336 331 9399  
greg.wilson@cbre.com

**Sam Elliott**  
Senior Associate  
+1 336 478 4404  
sam.elliott@cbre.com

© 2026 CBRE, Inc. All rights reserved. This information has been obtained from sources believed reliable, but has not been verified for accuracy or completeness. You should conduct a careful, independent investigation of the property and verify all information. Any reliance on this information is solely at your own risk. CBRE and the CBRE logo are service marks of CBRE, Inc. All other marks displayed on this document are the property of their respective owners, and the use of such logos does not imply any affiliation with or endorsement of CBRE. Photos herein are the property of their respective owners. Use of these images without the express written consent of the owner is prohibited.