

# US-19 DEVELOPMENT | TAMPA MSA

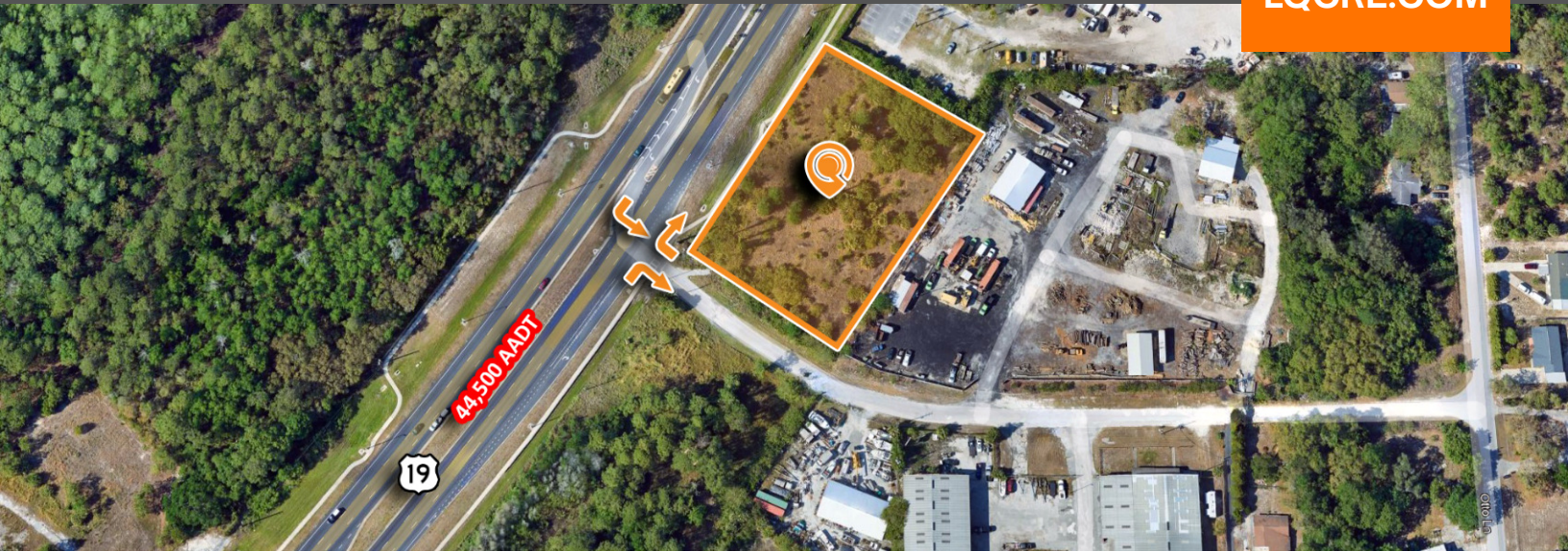
17128 U.S. 19 | Hudson, FL 34667

1.4 Acres | 44,500 Daily Traffic | Development Ready



LQ Commercial  
REAL ESTATE SERVICES

LQCRE.COM



CALL FOR  
PRICE



1.4 ACRES  
SIZE

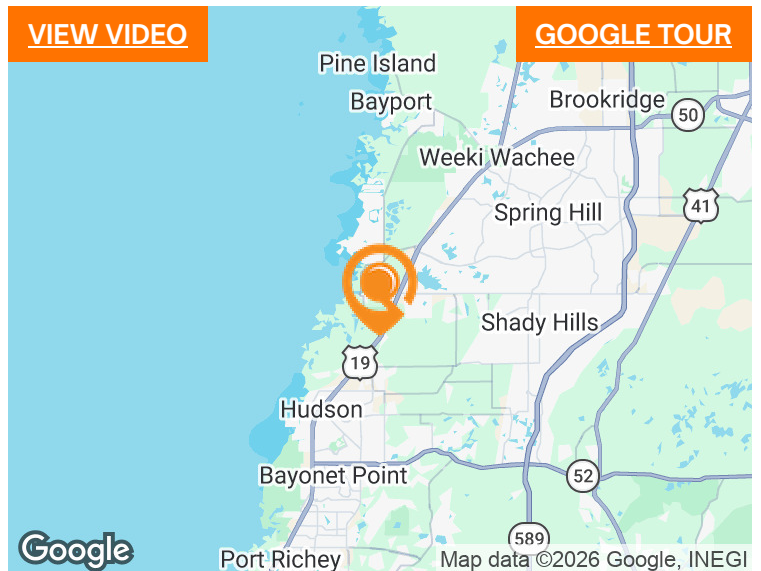


C2  
ZONING

- 1.4 AC development located off US-19 for sale in Pasco County
- Primary north-south thoroughfare
- High traffic count (44,500 VPD)- Ingress/egress
- C2 Zoning allows for multiple uses
- Growing population base (1.0%) and consumer market
- Minutes from residential neighborhoods (26K+ households) and waterfront communities

VIEW VIDEO

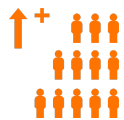
GOOGLE TOUR



[PROPERTIES.LQCRE.COM/HUDSON19](https://PROPERTIES.LQCRE.COM/HUDSON19)



5-MILE POPULATION  
**59,047**



5-YR POP. INCREASE  
**1.0%**



5-MILE AVG INCOME  
**\$79,729**



5440 Mariner St #112  
Tampa, FL 33609  
LQCRE.COM

Paul Rutledge  
Senior Broker Associate  
D: 813.999.1942  
C: 941.228.2198  
[prutledge@lqcre.com](mailto:prutledge@lqcre.com)

Zachary Ellis  
Associate  
D: 813.540.3320  
C: 813.493.3437  
[zellis@lqcre.com](mailto:zellis@lqcre.com)

# US-19 DEVELOPMENT | TAMPA MSA

17128 U.S. 19 | Hudson, FL 34667

1.4 Acres | 44,500 Daily Traffic | Development Ready



LQ Commercial  
REAL ESTATE SERVICES

LQCRE.COM



5440 Mariner St #112

Tampa, FL 33609

LQCRE.COM

**Paul Rutledge**

Senior Broker Associate

D: 813.999.1942

C: 941.228.2198

[prutledge@lqcre.com](mailto:prutledge@lqcre.com)

**Zachary Ellis**

Associate

D: 813.540.3320

C: 813.493.3437

[zellis@lqcre.com](mailto:zellis@lqcre.com)