

# FOR LEASE

92A HINTON AVENUE

Ottawa, ON K1Y 0Z8



**JOHN ZINATI**  
613.853.4106  
john@zinatirealty.com

92 CENTREPOINTE DRIVE • OTTAWA, ON K2G 6B1 • 613.853.4106 • ZINATIREALTY.COM

 **ZINATI**  
REALTY  
COMMERCIAL BROKERAGE



### OFFERING SUMMARY

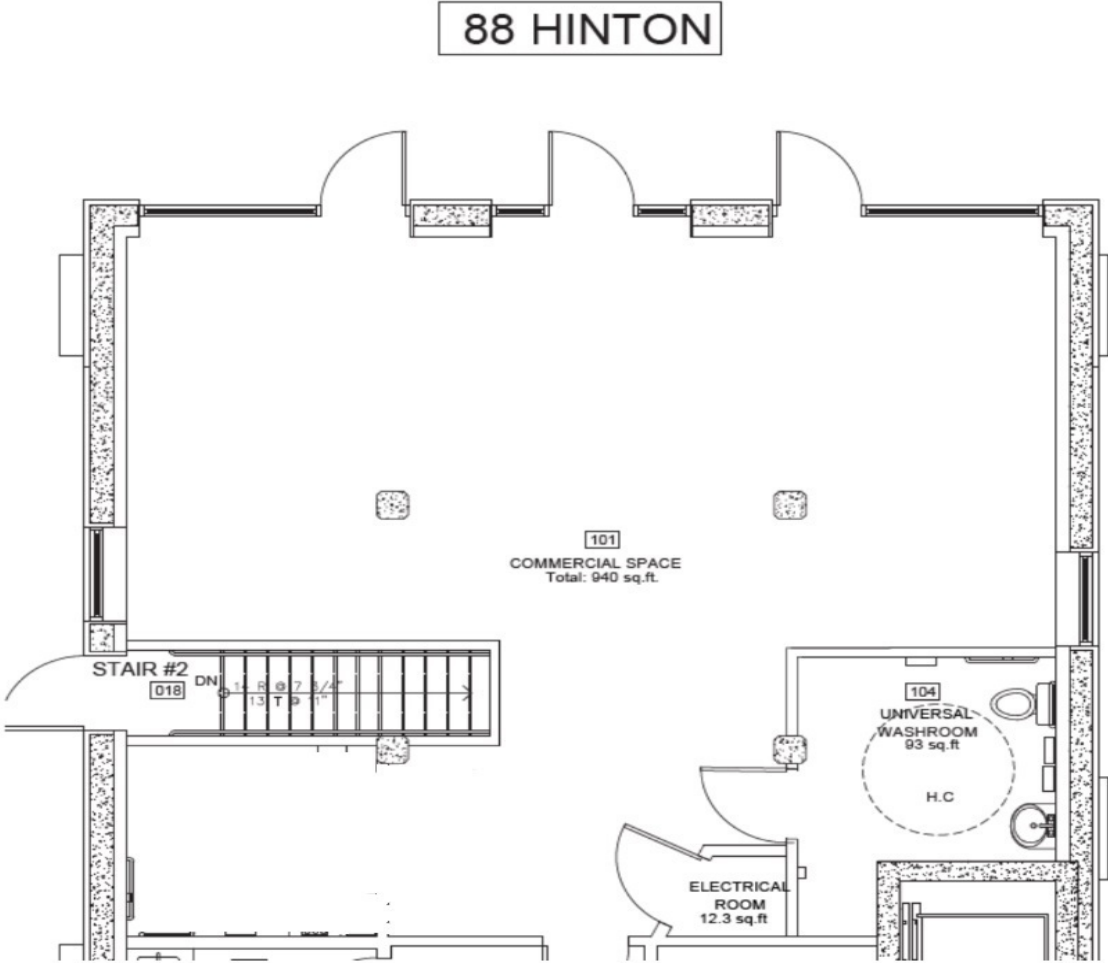
Available SF:	274 - 940 SF
Lease Rate (88 Hinton):	\$1,500/month (MG)
Lease Rate (92A Hinton):	\$3,800/month (MG)
Zoning:	MC / Mixed use

### PROPERTY OVERVIEW

New Build! Great opportunity to locate your business on the ground floor of this new and modern mixed-use development. Located in the heart of Wellington West and just steps away from the Parkdale Market, these retail units are conveniently accessible by foot, car, or public transit. Only two (2) units remaining! Street parking is available for clients and customers. Don't miss your chance to secure this great retail space before it's gone!

### PROPERTY HIGHLIGHTS

- New construction with high ceilings
- Steps away from Parkdale market and visible to Wellington Street
- Close proximity to Tunneys Pasture and HWY 417
- Ample natural light
- Utilities, property tax, and insurance extra



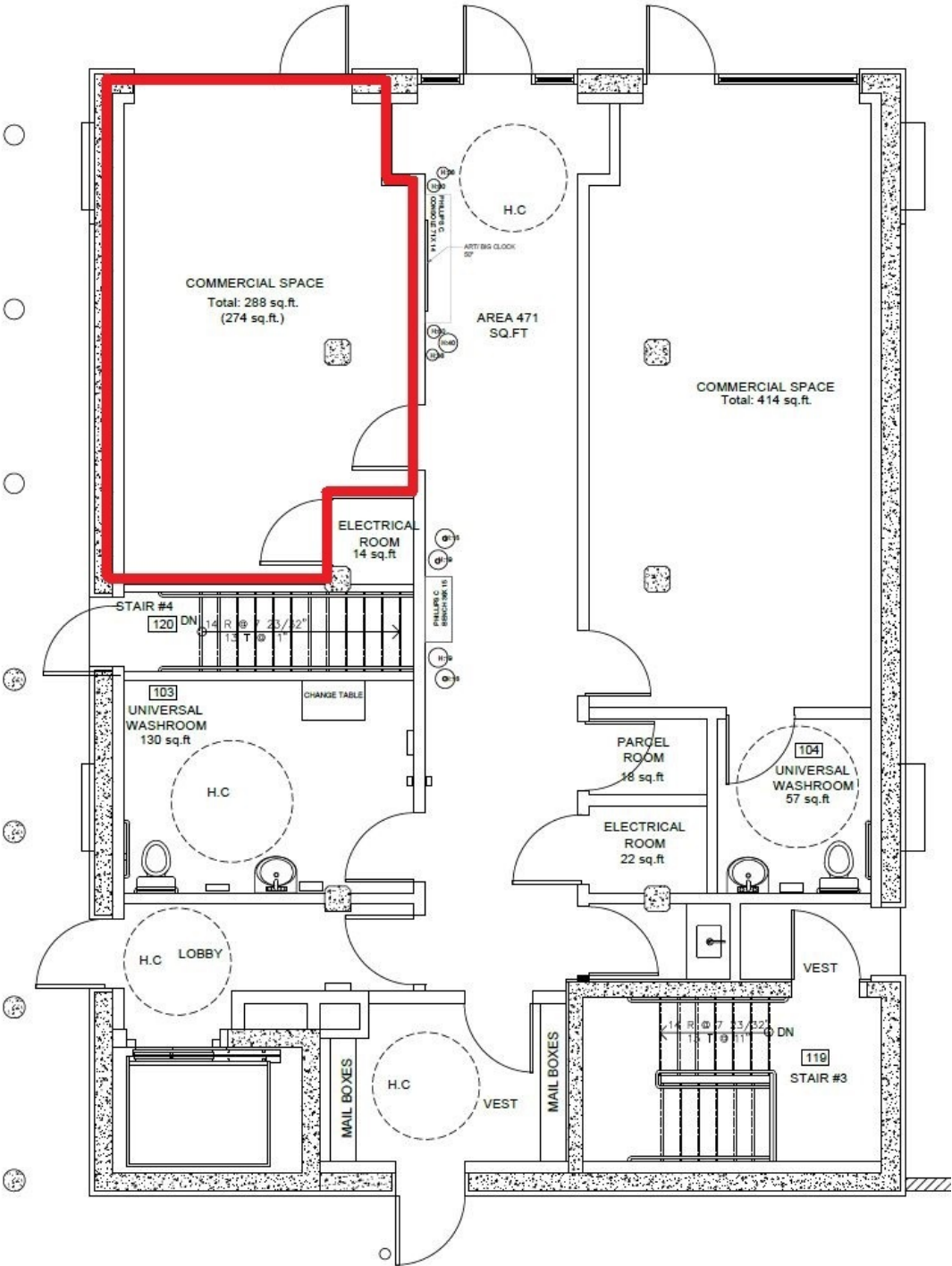
JOHN ZINATI  
613.853.4106  
john@zinatirealty.com

92 CENTREPOINTE DRIVE • OTTAWA, ON K2G 6B1 • 613.853.4106 • ZINATIREALTY.COM



92A HINTON AVENUE  
OTTAWA, ON K1Y 0Z8

Floor Plan - 92A Hinton



JOHN ZINATI  
613.853.4106  
john@zinatirealty.com

92 CENTREPOINTE DRIVE • OTTAWA, ON K2G 6B1 • 613.853.4106 • ZINATIREALTY.COM



92A HINTON AVENUE  
OTTAWA, ON K1Y 0Z8

Photos - 92A Hinton



**JOHN ZINATI**

613.853.4106

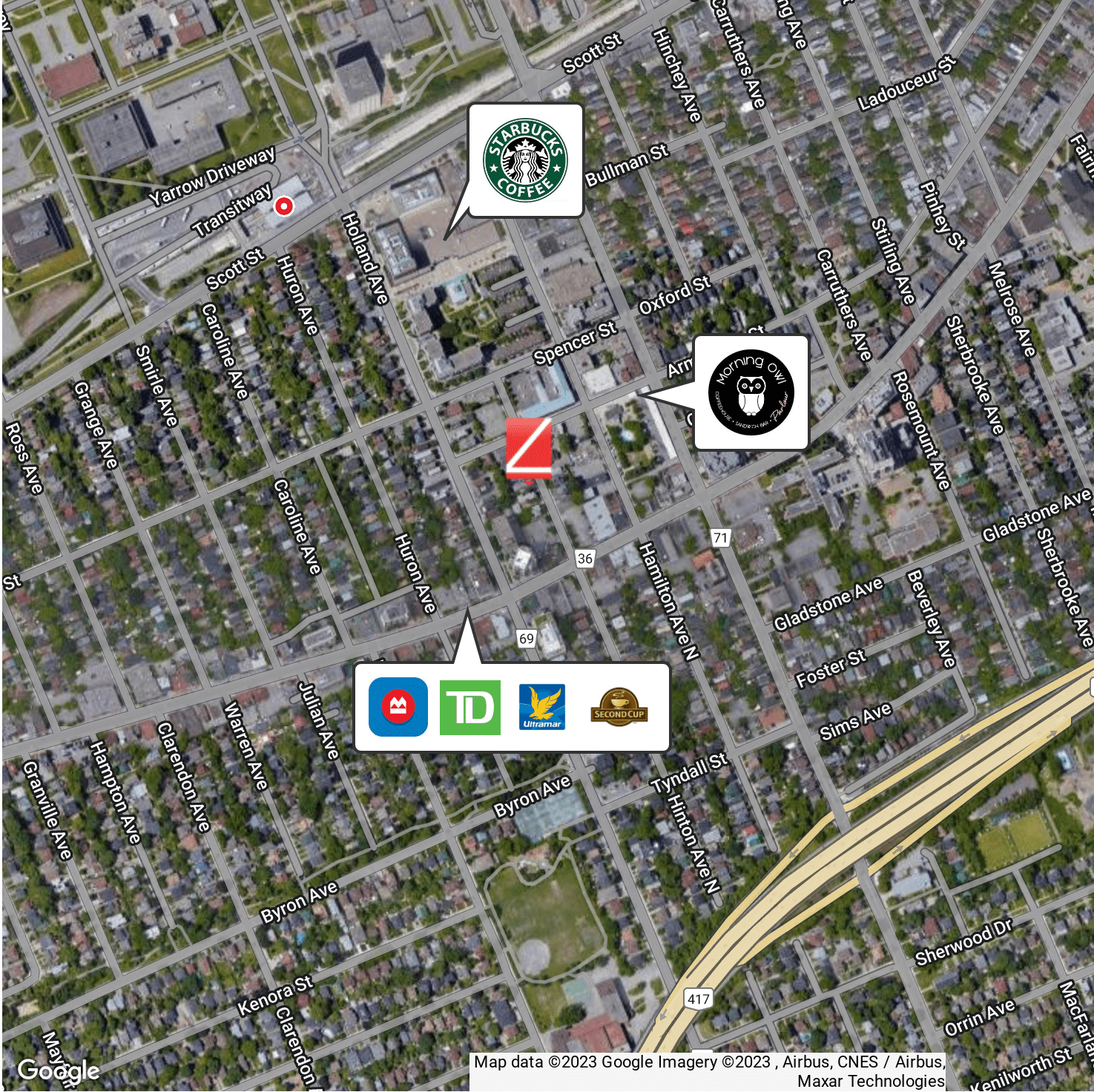
john@zinatirealty.com

92 CENTREPOINTE DRIVE • OTTAWA, ON K2G 6B1 • 613.853.4106 • ZINATIREALTY.COM

**ZINATI**  
REALTY  
COMMERCIAL BROKERAGE

# 92A HINTON AVENUE OTTAWA, ON K1Y 0Z8

Retailer Map



**JOHN ZINATI**  
613.853.4106  
john@zinatirealty.com

92 CENTREPOINTE DRIVE • OTTAWA, ON K2G 6B1 • 613.853.4106 • ZINATIREALTY.COM

