

1.76± Acres

on Dougherty Ferry Road

1120 Country Stone Dr.
Valley Park, MO 63088



For Sale

Sale Price:
\$550,000.00

Features:

- Level Clear Lot
- Zoned C-1 - Office, Retail & Restaurant are permitted uses
- Potential for multi-family condos or rentals with zoning change

Contact

Will Aschinger
waschinger@hillikercorp.com
314-881-5586

Scott Martin
smartin@hillikercorp.com
314-781-0001



Celebrating 40 years!

1985 - 2025

Hilliker Corporation | www.hillikercorp.com | 314-781-0001
1401 S. Brentwood Blvd. Suite 650, St. Louis, MO 63144

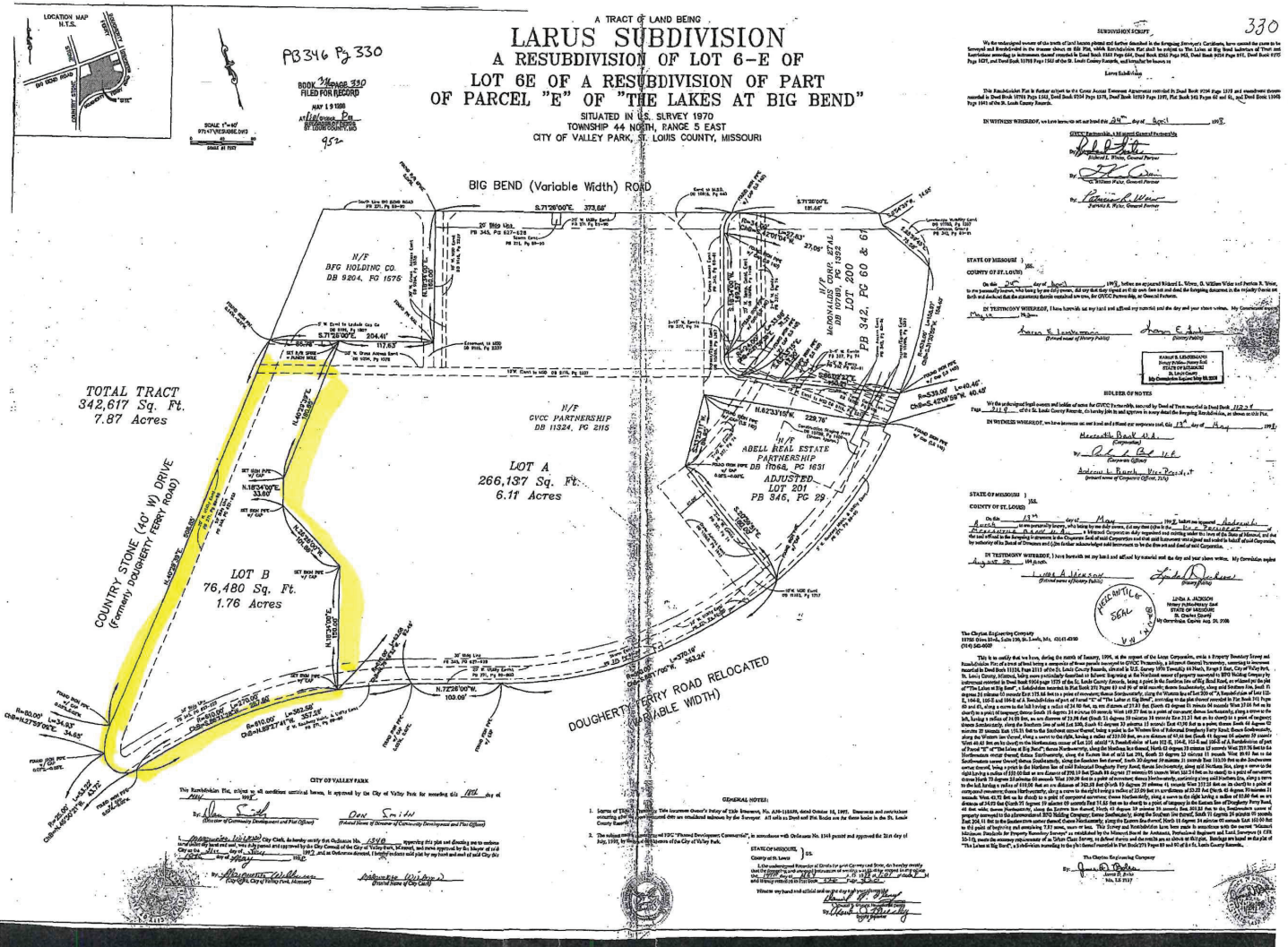
Information is from appropriate sources but is not guaranteed. No representation is made to environmental or other conditions of property. We recommend purchaser investigate fully.

Individual Membership in the Society of Industrial and Office Realtors.



1.76± Acres
on Dougherty Ferry Road

1120 Country Stone Dr.
Valley Park, MO 63088



Contact
Will Aschinger
waschinger@hillikercorp.com
314-881-5586

Scott Martin
smartin@hillikercorp.com
314-781-0001



Hilliker Corporation | www.hillikercorp.com | 314-781-0001
1401 S. Brentwood Blvd. Suite 650, St. Louis, MO 63144

Information is from appropriate sources but is not guaranteed. No representation is made to environmental or other conditions of property. We recommend purchaser investigate fully.
Individual Membership in the Society of Industrial and Office Realtors.