

# 440-490 Great Southwest Parkway Atlanta, GA 30336



## INDUSTRIAL SPACE FOR LEASE

### Available Space:

- ▶ Suite 440:
  - 10,556 SF
  - 1,198 SF Office
  - 2 Dock High Doors
  - 1 Drive-In Door
  
- ▶ Suite 450:
  - 10,500 SF
  - 1,174 SF Office
  - 2 Dock High Doors
  - Drive-In Door

### Property Features:

- ▶ Building Type: Concrete
- ▶ Zoning: M1 (Light Industrial)
- ▶ Front Load Building
- ▶ Combinable to 21,066 SF

Owned & Managed By:



ONWARD INVESTORS



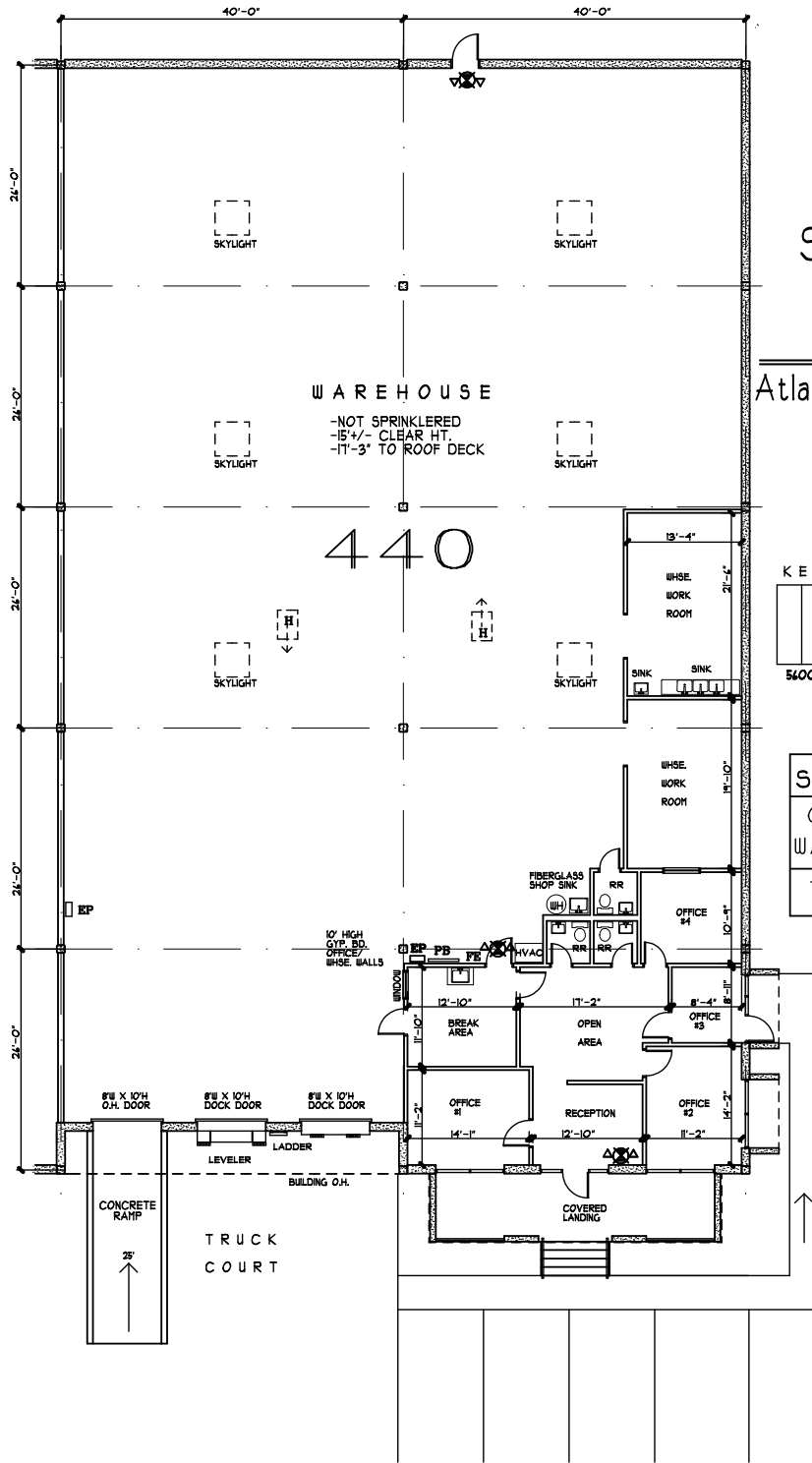
1600 NORTHSIDE DRIVE NW  
Suite 100  
ATLANTA, GA 30318  
404.352.1882  
WHNRE.COM

Joseph Rogers | Partner  
C: 404.550.0817  
jrogers@whnre.com

Preston Pannell | Associate  
C: 404.877.2178  
ppannell@whnre.com

Matt Sirockman | Associate, SIOR  
C: 404.202.2222  
msirockman@whnre.com

# 440-490 Great Southwest Parkway Atlanta, GA 30336



440  
GREAT  
SOUTHWEST  
PWKY, SW  
Atlanta, Georgia 30336

KEY PLAN



SQUARE FOOTAGE	
OFFICE	1,198
WAREHOUSE	9,368
<b>TOTAL</b>	<b>10,566</b>



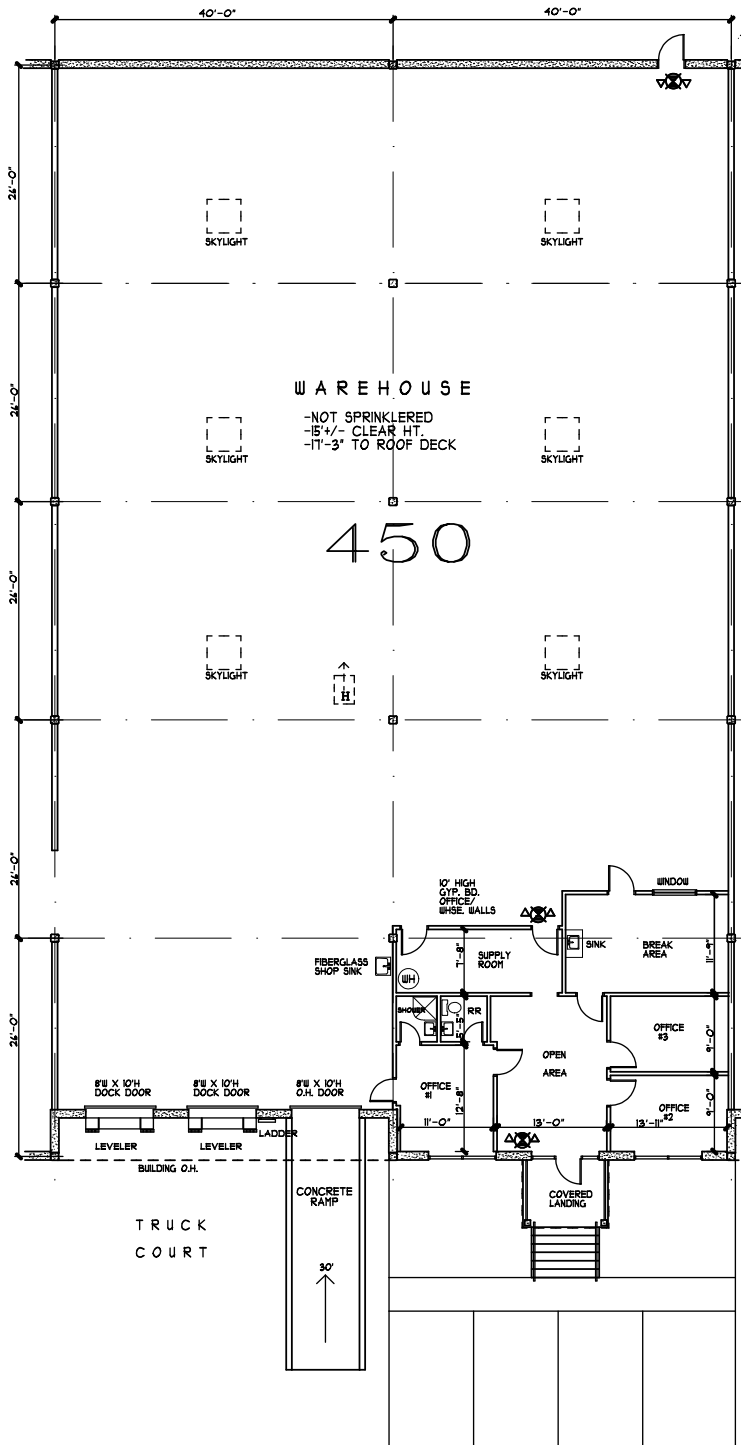
1600 NORTHSIDE DRIVE NW  
Suite 100  
ATLANTA, GA 30318  
404.352.1882  
WHNRE.COM

Joseph Rogers | Partner  
C: 404.550.0817  
jrogers@whnre.com

Preston Pannell | Associate  
C: 404.877.2178  
ppannell@whnre.com

Matt Sirockman | Associate, SIOR  
C: 404.202.2222  
msirockman@whnre.com

# 440-490 Great Southwest Parkway Atlanta, GA 30336



450  
GREAT  
SOUTHWEST  
PWKY, SW  
Atlanta, Georgia 30336

KEY PLAN



SQUARE FOOTAGE	
OFFICE	1,174
WAREHOUSE	9,326
TOTAL	10,500



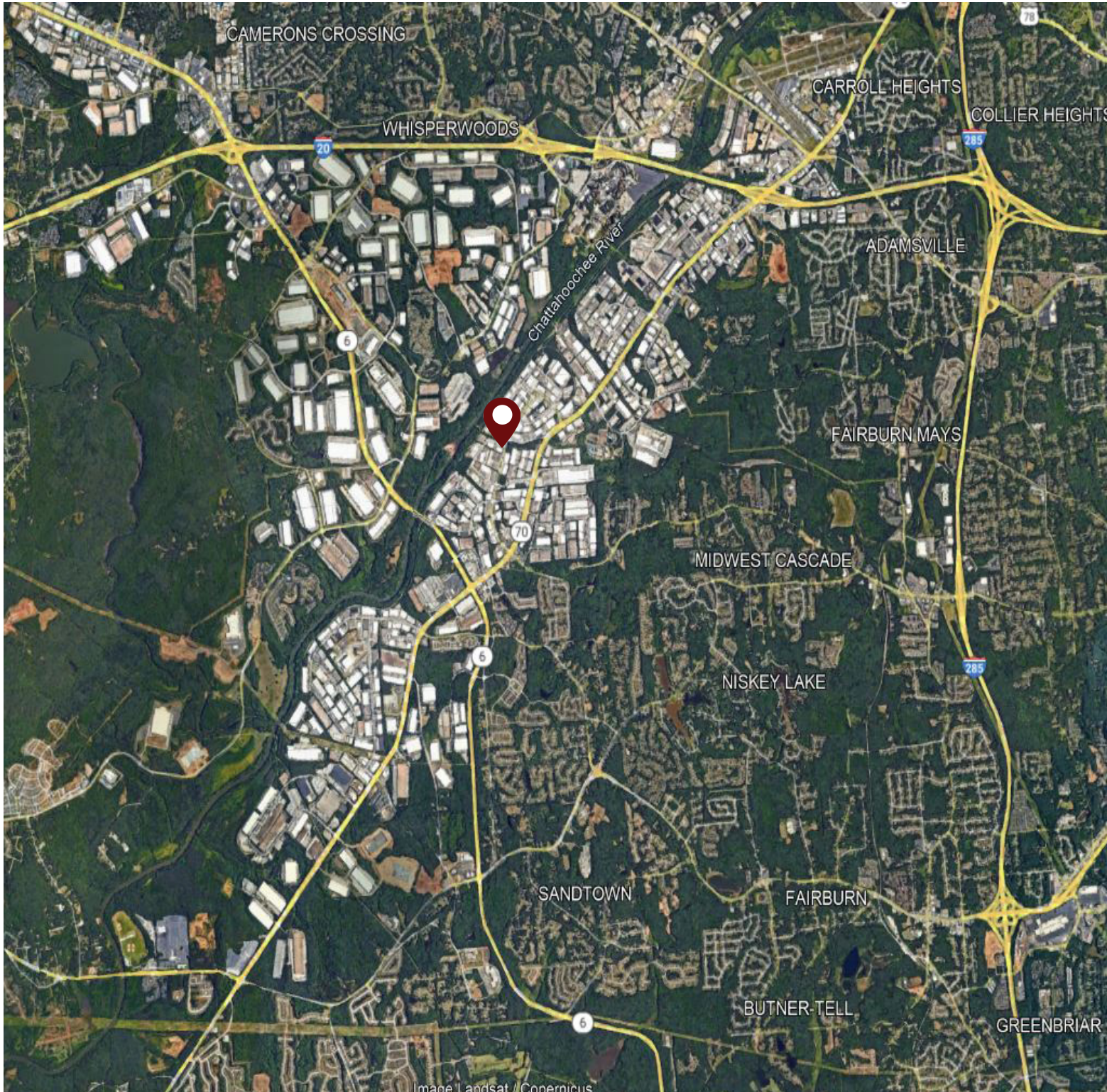
1600 NORTHSIDE DRIVE NW  
Suite 100  
ATLANTA, GA 30318  
404.352.1882  
WHNRE.COM

Joseph Rogers | Partner  
C: 404.550.0817  
jrogers@whnre.com

Preston Pannell | Associate  
C: 404.877.2178  
ppannell@whnre.com

Matt Sirockman | Associate, SIOR  
C: 404.202.2222  
msirockman@whnre.com

# 440-490 Great Southwest Parkway Atlanta, GA 30336



1600 NORTHSIDE DRIVE NW  
Suite 100  
ATLANTA, GA 30318  
404.352.1882  
WHNRE.COM

Joseph Rogers | Partner  
C: 404.550.0817  
jrogers@whnre.com

Preston Pannell | Associate  
C: 404.877.2178  
ppannell@whnre.com

Matt Sirockman | Associate, SIOR  
C: 404.202.2222  
msirockman@whnre.com

Every effort has been made to provide accurate information, but no liability is assumed for errors or omissions.