

FOR SALE

UNIT 1, 1406 CENTRE STREET N

HIGH-EXPOSURE MAIN FLOOR SPACE WITH
PROMINENT SIGNAGE AND FLEXIBLE ZONING.



Alexi Olcheski
President & CEO
403 971 5167
alexi.olcheski@kpliglobal.com

Estelle Tran
Managing Director
403 993 2898
estelle.tran@kpliglobal.com





Anastasiya Gryshchenko
Vice President
403 888 1748
anastasiya.gry@kpliglobal.com

KPLI
GLOBAL

Unit 1, 1406 Centre Street N

Property Type	Office Condo
Available Area	2,476 sf
Parking	4 Stalls (Covered surface parking)
Year Built	2016
Condo Fees	\$1,558.26/month
Operating Costs	\$1,200/month
Zoning	C-COR1 f3.0h23 Commercial – Corridor
Price	Contact Agent

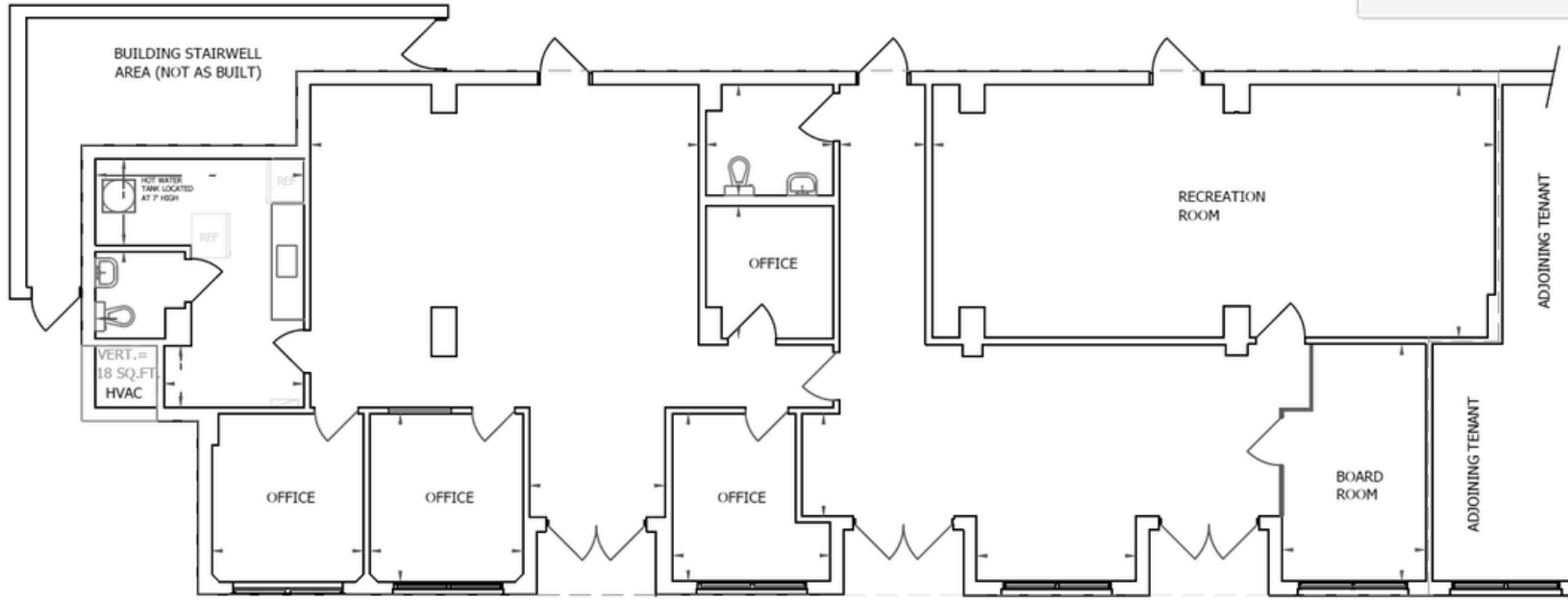
Property Highlights

-  **Prominent Centre Street Signage**
for maximum visibility
-  **Flexible zoning** to accommodate a wide range of businesses
-  **Walkable amenities** with Calgary Transit routes right outside the building
-  **Secured covered parking**
plus convenient nearby street parking



Unit 1 - 2,476 sf

- Reception area
- 4 Offices
- 1 Boardroom room
- Open Area for Workstations
- Washrooms





Waiting Room



Reception



Office Room



Boardroom



Kitchen



Work Stations

Unit 1, 1406 Centre Street N



Alexi Olcheski

President & CEO

403 971 5167

alexi.olcheski@kpliglobal.com

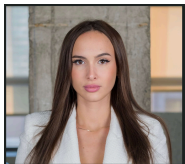


Estelle Tran

Managing Director

403 993 2898

stelle.tran@kpliglobal.com



Anastasiya Gryshchenko

Vice President

403 888 1748

anastasiya.gry@kpliglobal.com

KPLIGLOBAL.COM

© 2025 KPLI Global Corp. All rights reserved.



KPLI
GLOBAL