

FOR SALE

48.27 AC MICHIGAN AVE, HOWELL



48.27 AC OF COMMERCIAL & INDUSTRIAL LAND FOR SALE



PROPERTY DETAILS

- Industrial, commercial, and residential development potential
- Four (4) parcels assembled under one ownership and also divisible
- Adjacent to the Howell Motorsports Gateway development
- Frontage on Michigan Ave. / Pickney Road (D-19)
- Municipal water and sewer, natural gas, & electricity at site
- Within a mile from the heart of downtown Howell
- Just north of I-96 and Pinckney Road interchange for I-96

For information, please contact:



ROB HUGHES

248.505.0399

rob@rhcommercial.net

REECE HUGHES

248.207.5847

reece@rhcommercial.net

NATE HUGHES

810.923.6099

nate@rhcommercial.net

FOR SALE

48.27 AC MICHIGAN AVE, HOWELL



AVAILABILITY BREAKDOWN

SOUTH MICHIGAN AVENUE, SITE TYPE D: LARGE COMMERCIAL/MIXED

CITY OF HOWELL

Available AC: 47.33 AC
Property Type: Commercial, Industrial, & Mixed Use
Contact Agents
Price: Contact Agents
Price / AC: SMich, D
Zoning:

Parcel ID: 4717-01-100-124
Taxes: Available
Traffic Count: 16,263 / Morgan St (Costar 2022)



HIGHWAY SERVICE

MARION TOWNSHIP

Available AC: 2.18
Property Type: Commercial, Industrial, & Mixed Used
Contact Agents
Price: Contact Agents
Price / AC: Contact Agents
Zoning: HWY SE

Parcel ID: 4710-01-100-004, 4710-01-100-009, & 4710-01-100-064
Taxes: Available
Traffic Count: 16,263 / Morgan St (Costar 2022)



For information, please contact:



ROB HUGHES
248.505.0399
rob@rhcommercial.net

REECE HUGHES
248.207.5847
reece@rhcommercial.net

NATE HUGHES
810.923.6099
nate@rhcommercial.net

FOR SALE

48.27 AC MICHIGAN AVE, HOWELL



CONCEPT PLAN



For information, please contact:



ROB HUGHES
248.505.0399
rob@rhcommercial.net

REECE HUGHES
248.207.5847
reece@rhcommercial.net

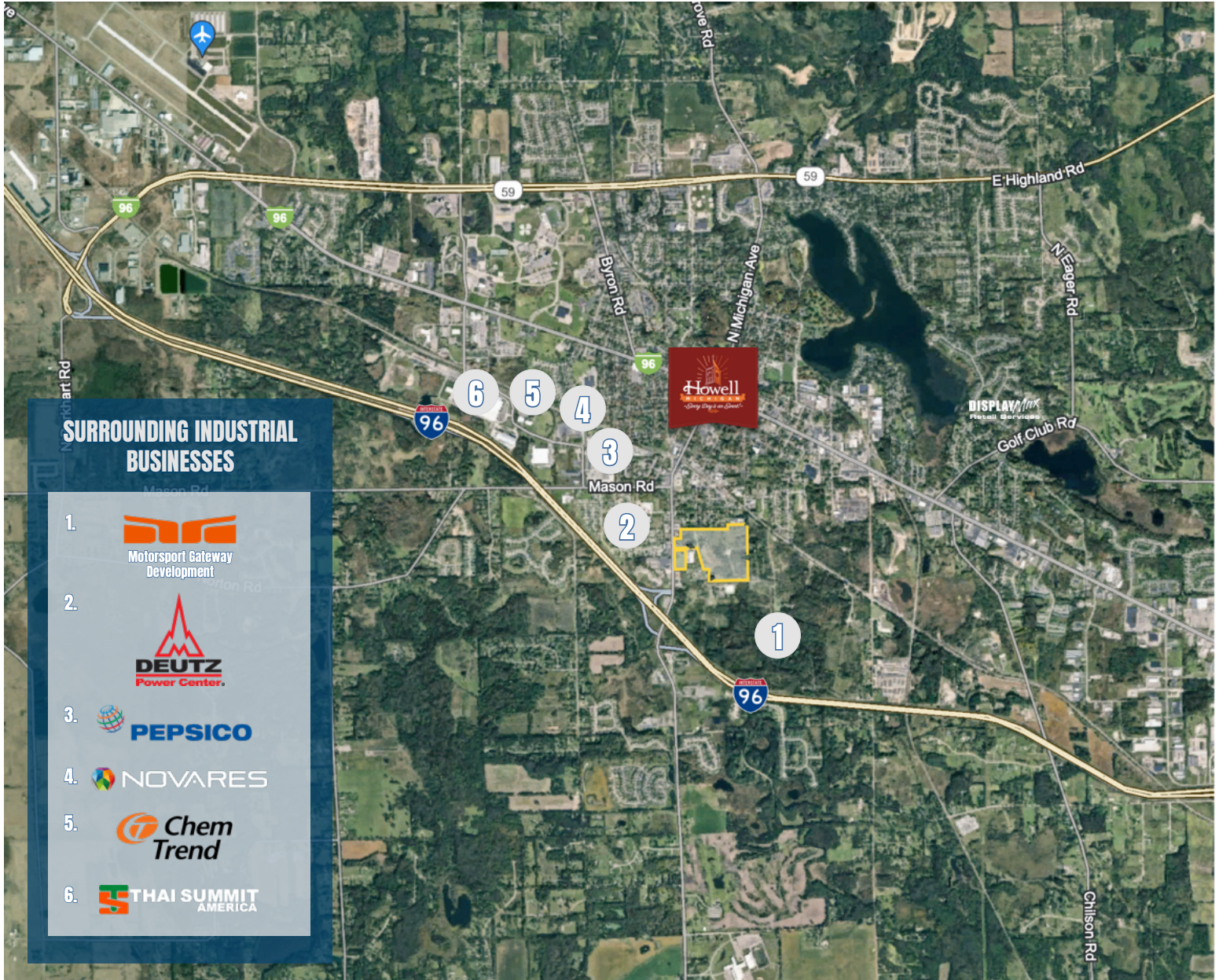
NATE HUGHES
810.923.6099
nate@rhcommercial.net

FOR SALE

48.27 AC MICHIGAN AVE, HOWELL



AERIAL



For information, please contact:



ROB HUGHES

248.505.0399

rob@rhcommercial.net

REECE HUGHES

248.207.5847

reece@rhcommercial.net

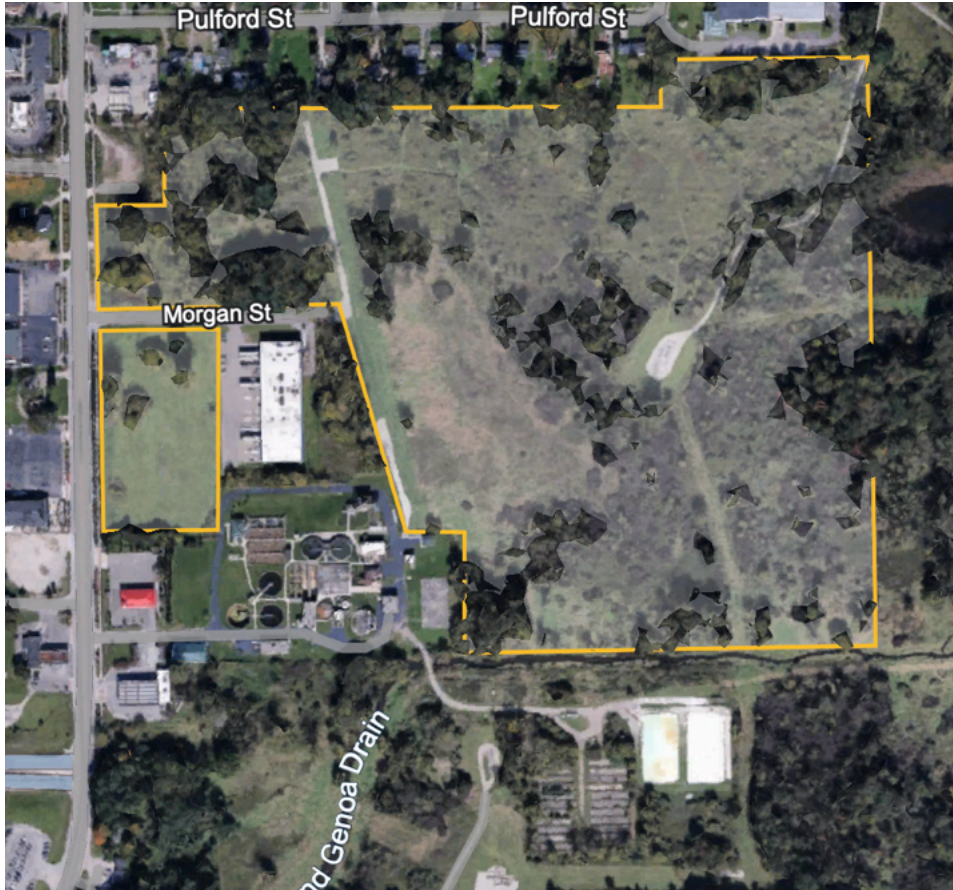
NATE HUGHES

810.923.6099

nate@rhcommercial.net

FOR SALE

48.27 AC MICHIGAN AVE, HOWELL



PRICING INFORMATION

Sale Price: Contact Agents

Price / AC: Contact Agents

PROPERTY DESCRIPTION

Lot Size: 48.27 AC
Property Type: Industrial, Commercial Multifamily
Municipality: City of Howell & Marion Twp
Zoning: City of Howell: SMich, D
Marion Twp: HS

Parcel ID(s): 4717-01-100-124,
4710-01-100-004,
4710-01-100-009,
4717-01-102-064
Taxes: Available
Traffic Count: 16,263 / Morgan St
(Costar 2022)

SUMMARY

Prime development opportunity for commercial, light industrial, and/or residential! Frontage on Michigan Avenue with close proximity to major full-service freeway interchange.

ROAD MAP



For information, please contact:



ROB HUGHES
248.505.0399
rob@rhcommercial.net

REECE HUGHES
248.207.5847
reece@rhcommercial.net

NATE HUGHES
810.923.6099
nate@rhcommercial.net