

152 NOTRE-DAME

GESTION
GEORGES
COULOMBE





152 Notre-Dame East - La Sauvegarde Building

The 1913 building was built by the first French-Canadian insurance company, the Backup. The marble stairwell, the original vaults and the majestic entrance have been preserved. On the facade, the massive ornamental iron doors, completely restored, testify to the richness of the architectural treatment of the time. The building was abandoned at the time of the acquisition, a floors even included some prisons with iron bars!




Année de construction


1913


Services


- Entretien des aires communes
- Ascenseurs
- Sécurité


Characteristics

 **Address :**
152 Notre-Dame East and 445 Saint-Vincent

 **Floors :**
10


 **Neighborhood :**
Old Montreal


 **Area per floor :**
3,930 ft²

 **Vocation :**
Commercial

 **Total area :**
40,608 ft²

 **Year of acquisition :**
1996

 **Original owner :**
La Sauvegarde

 **Historical name :**
John Smith Archibald et Charles Jewett Saxe

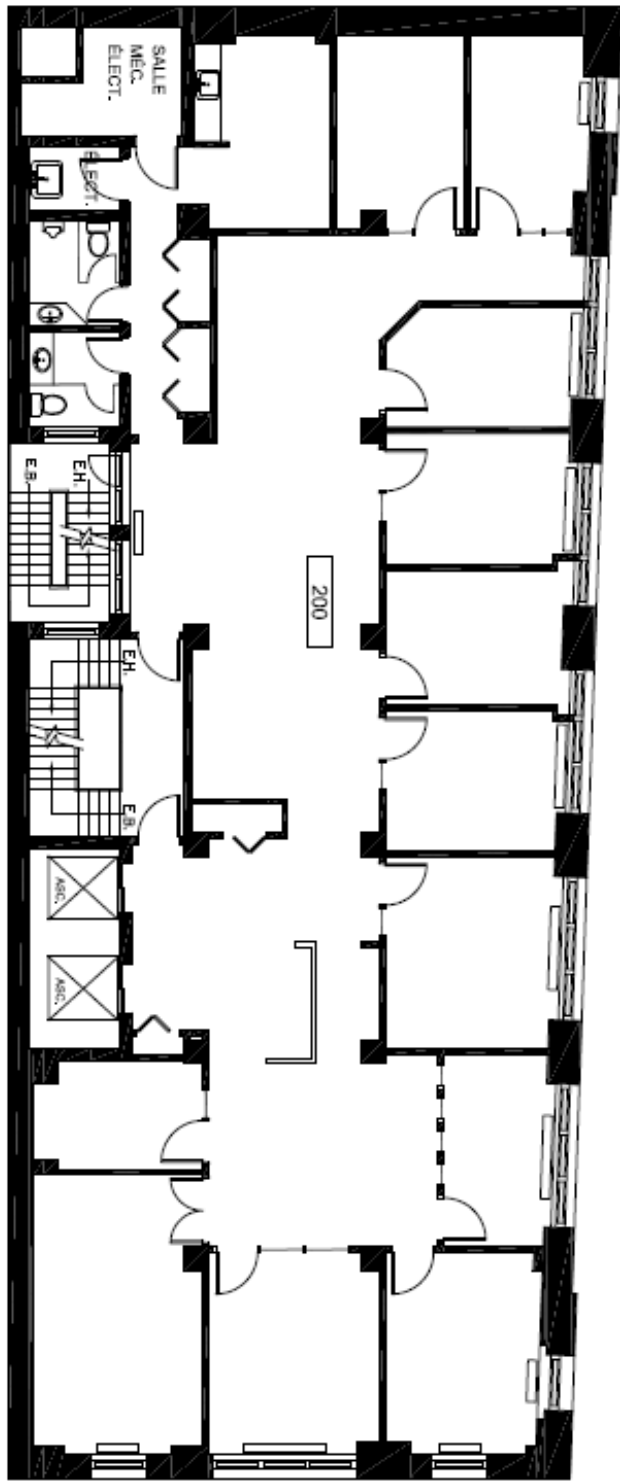
SUITE 200

3930 square feet (full floor)

Open space - 3 closed offices - lunch area

- ◆ Commercial space located in the heart of Old Montreal, just steps from the courthouse and the Court of Appeal, and near Place Jacques-Cartier
- ◆ Close to Place-d'Armes and Champ-de-Mars metro stations





rue Saint-Vincent



GESTION
GEORGES
COLUMBE

rue Notre-dame

152 Notre-Dame est

2e
mai 09

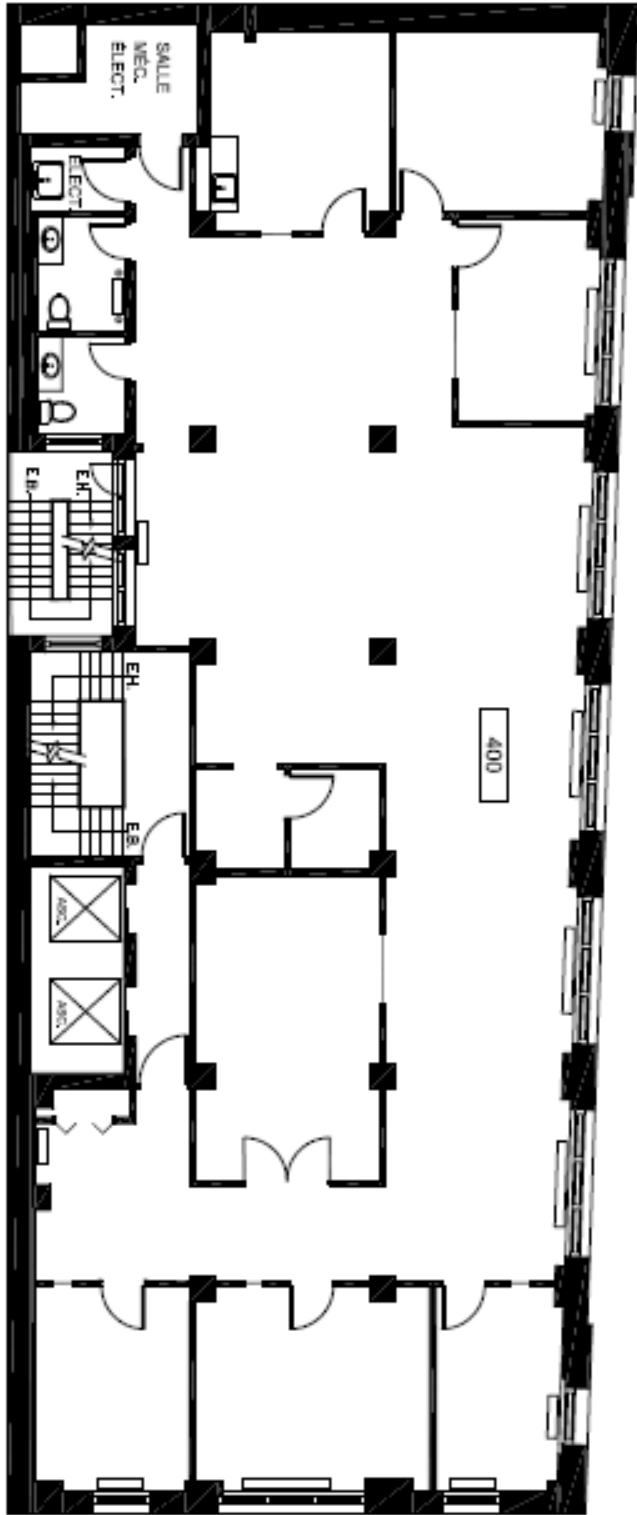
SUITE 400

3930 square feet (full floor)

Open space - 6 closed offices - Conference room - Lunch area

- Commercial space located in the heart of Old Montreal, just steps from the courthouse and the Court of Appeal, and near Place Jacques-Cartier
- Close to Place-d'Armes and Champ-de-Mars metro stations





rue Saint-Vincent



GESTION
 GEORGES
 COULAMBE

rue Notre-dame

152 Notre-Dame est

4e
 Janvier 2012

SUITE 900

3930 square feet (full floor)

Open space - 8 closed offices – Conference room – Lunch area

- ◆ Commercial space located in the heart of Old Montreal, just steps from the courthouse and the Court of Appeal, and near Place Jacques-Cartier
- ◆ Close to Place-d'Armes and Champ-de-Mars metro stations



