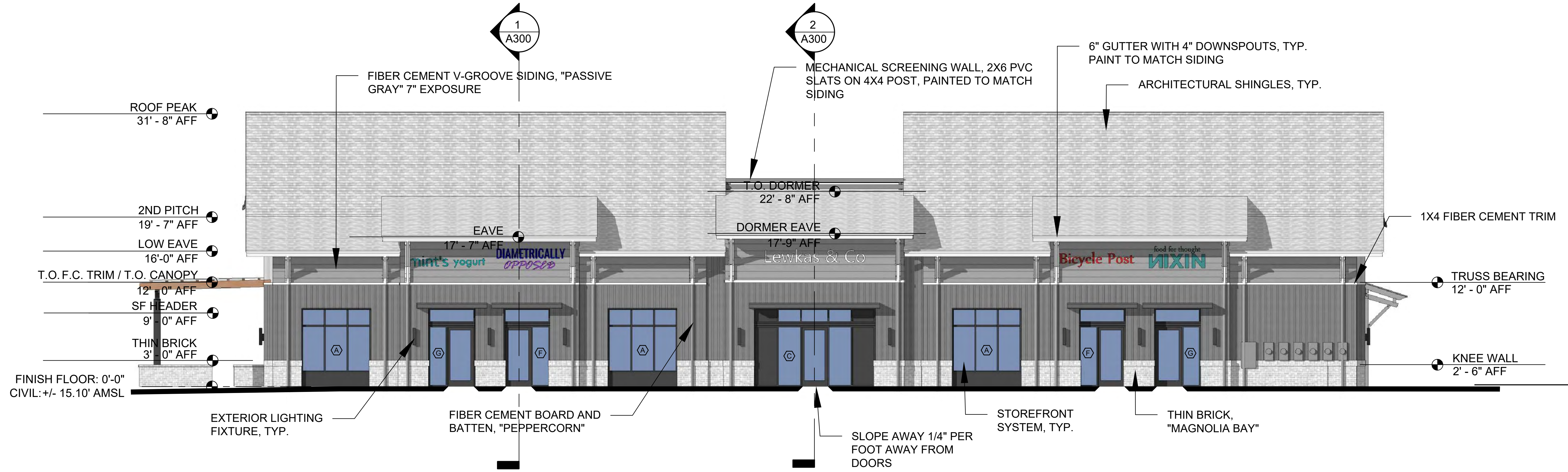


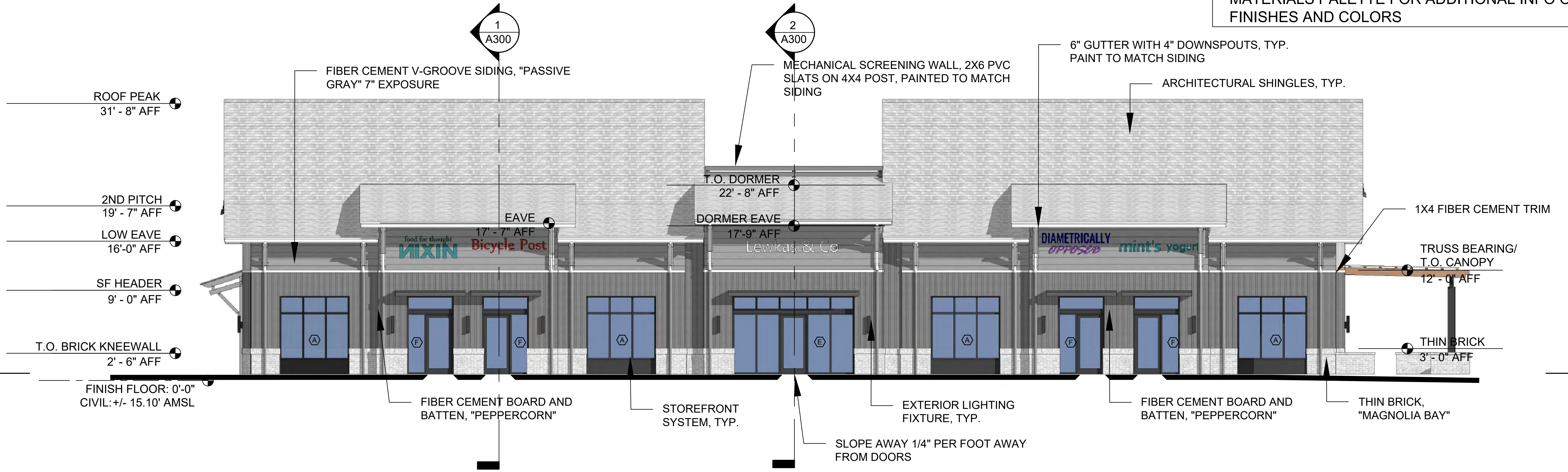
JOB NUMBER:	000
DRAWN:	AJR
CHECKED:	LFK



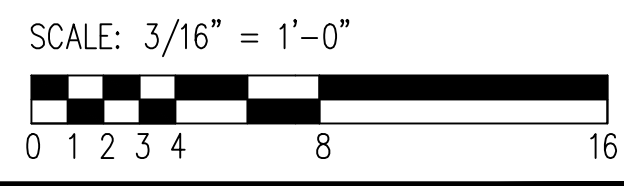
1 NORTH ELEVATION (FRONT) FACING PARKING LOT AND BLDG "A"
SCALE: 3/16" = 1'-0"

NOTE: SIGNAGE BY OTHERS

SEE TOMP FINAL DRB APPROVED EXTERIOR MATERIALS PALETTE FOR ADDITIONAL INFO ON FINISHES AND COLORS



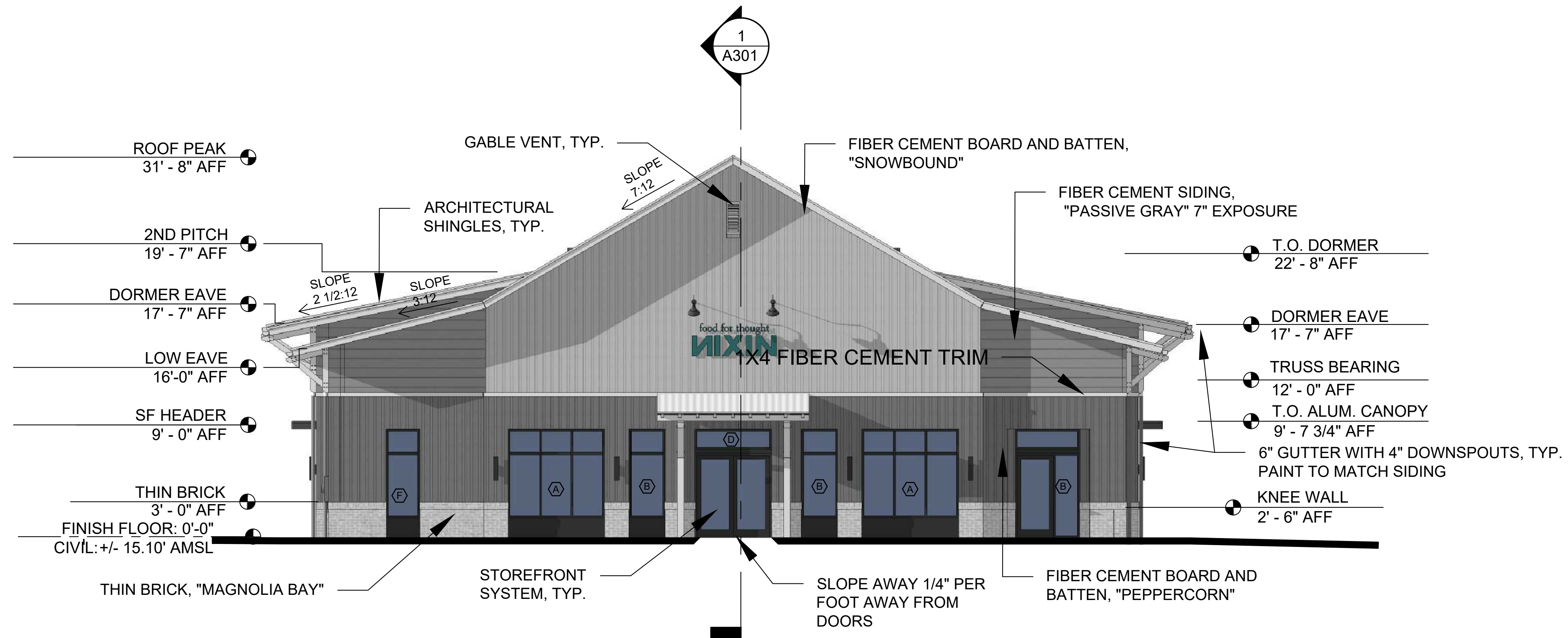
2 SOUTH ELEVATION (REAR)
SCALE: 3/16" = 1'-0"



REVISION NOTES:

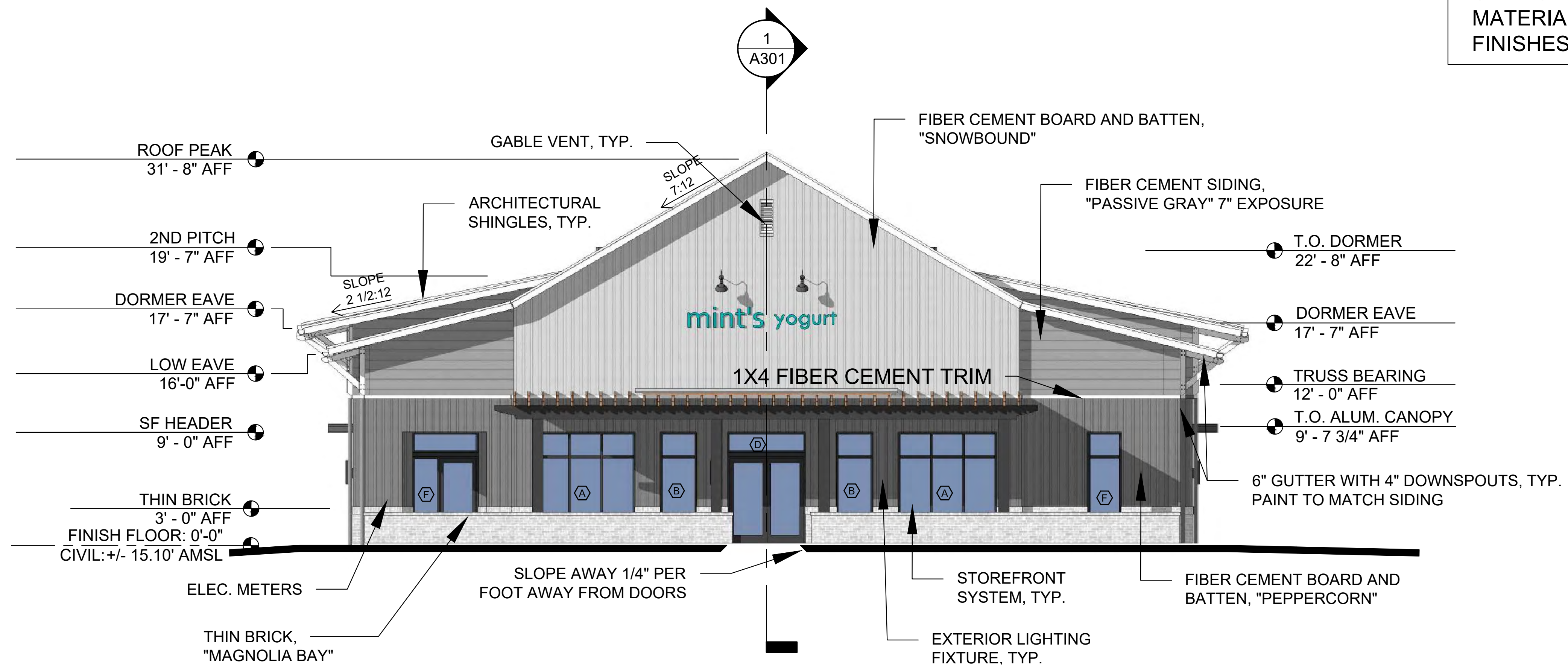
HIGHWAY 17 RETAIL VILLAGE BUILDING "C"
TMS: 559-13-00-041
MOUNT PLEASANT, SC
NORTH AND SOUTH BUILDING ELEVATIONS

SHEET NUMBER & TITLE:
A200
PERMIT / CONSTRUCTION DRAWINGS
03.03.2026



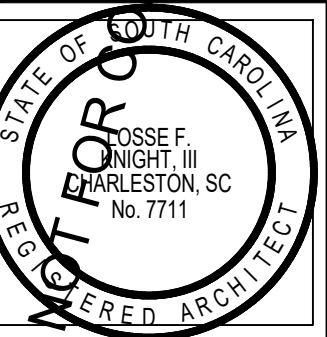
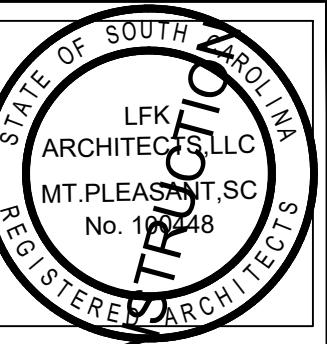
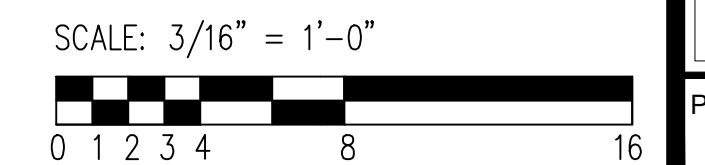
1 WEST ELEVATION- SIDE FACING PATIO AND PARKING LOT
SCALE: 3/16" = 1'-0"

NOTE: SIGNAGE BY OTHERS



2 EAST ELEVATION (SIDE) FACING ENTRY DRIVE AND BLDG "D"
SCALE: 3/16" = 1'-0"

SEE TOMP FINAL DRB APPROVED EXTERIOR MATERIALS PALETTE FOR ADDITIONAL INFO ON FINISHES AND COLORS



LFK ARCHITECTS
Land Planning + Feasibility Studies
Commercial + Residential Design
www.lfkarchitect.com
LFK ARCHITECTS, LLC
886 JOHNNIE DODDS BLVD
SUITE 200
MOUNT PLEASANT, SC 29464
LOSSE F. KNIGHT III, AIA, NCARB
losse@lfkarchitect.com
phone: 843-330-8940

JOB NUMBER: 000	DRAWN: AJR	CHECKED: LFK
-----------------	------------	--------------

REVISION NOTES:

HIGHWAY 17 RETAIL VILLAGE BUILDING "C"
TMS: 559-13-00-041
MOUNT PLEASANT, SC
EAST & WEST BUILDING ELEVATIONS

SHEET NUMBER & TITLE:
A201
PERMIT / CONSTRUCTION DRAWINGS
03.03.2026