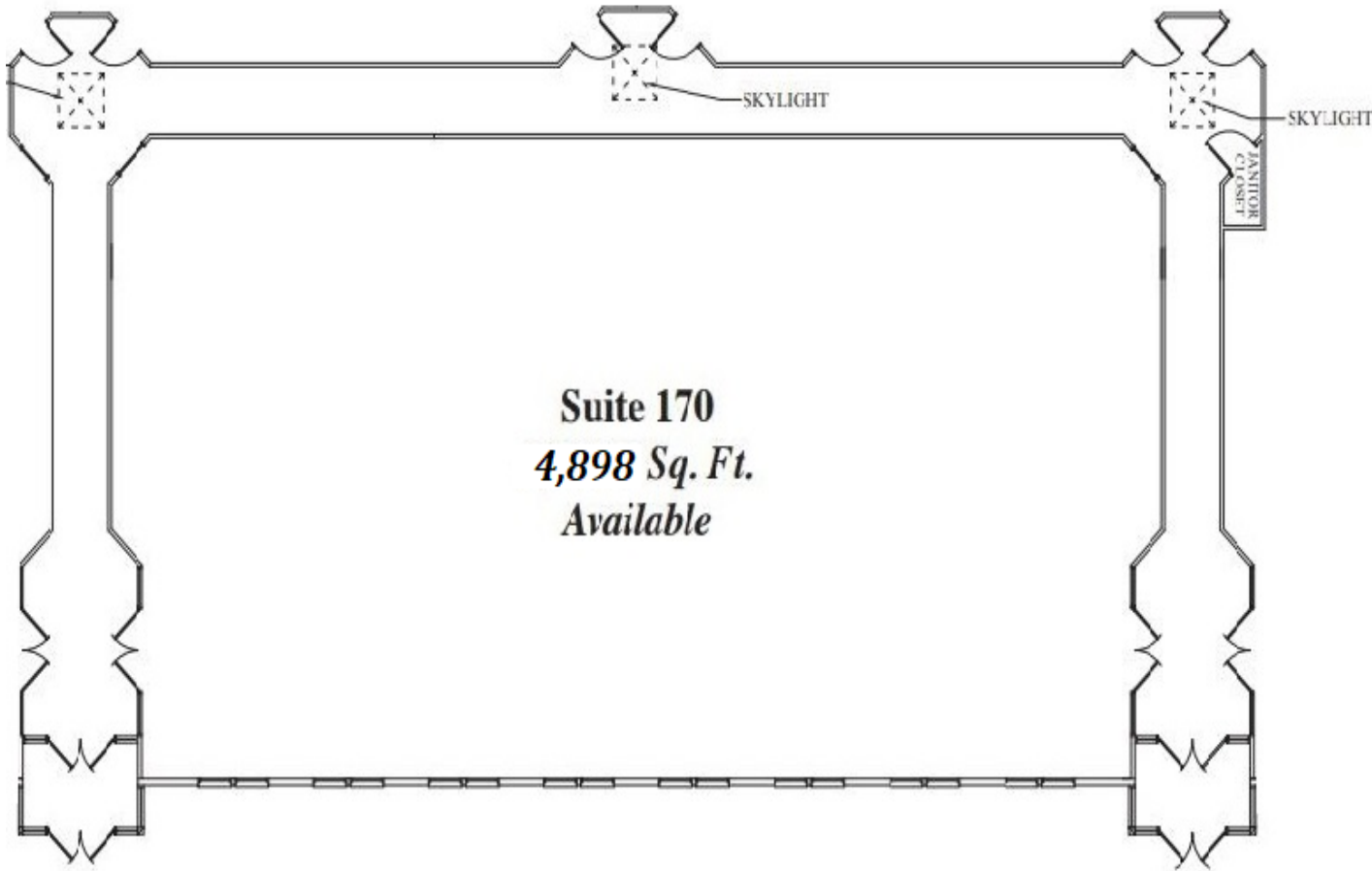


# SUITE 170 | 4,898 SF

2700-2800 KESLINGER ROAD \ GENEVA, IL



## SPACE NOTES

- Monument Signage Available
- Ready to go Medical and Dental Spaces Available
- Newer Construction Building with full custom buildouts available
- High Parking Ratio (4.88 Spaces/1,000 SF)



**RYAN MOEN**

630.480.6346

rmoen@versares.com

**JOHN MILLNER**

630.480.6342

JMillner@VersaRES.com

**1 MID AMERICA PLAZA, 3RD FLOOR**

**OAKBROOK TERRACE, IL 60181**

**630.480.6413**

EXCLUSIVELY LISTED BY

**VERSA**  
REAL ESTATE SERVICES