



4,480 - 19,600 SF AVAILABLE | ENDCAP SUITE

3482 OAKCLIFF ROAD

SUITES F - H | DORAVILLE, GA 30340

OWNED BY:

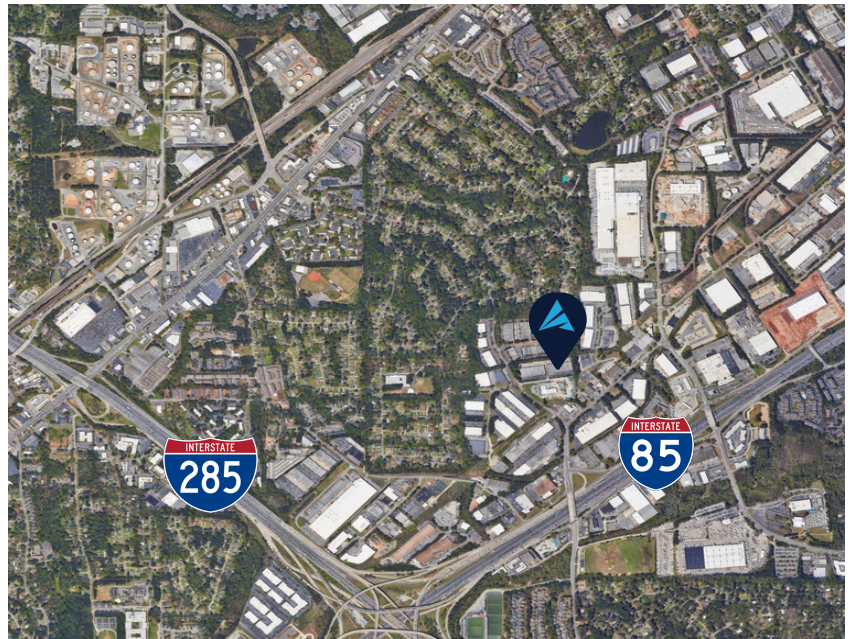


FOR LEASE



PROPERTY INFORMATION

Total Size: 4,480 - 19,600 SF
 Office: 2,940 SF
 Warehouse: 16,660 SF
 Loading: Five (5) Dock High Doors
 One (1) Drive-In Doors
 Clear Height: 18'
 Features: Endcap suite with IOS available
 Available: Immediately
 Access: Easy access to I-85 and I-285



For more information, please contact:

ANDY HEAD

Office: (404) 595 - 1466
Cell: (404) 713 - 4601
ahead@apexindustrialre.com

TREY WEGHORST

Office: (770) 264 - 9420
Cell: (404) 276 - 9314
tweghorst@apexindustrialre.com

MORGAN MCMENAMY

Office: (404) 806 - 6631
Cell: (404) 771 - 1199
mcmcmnamy@apexindustrialre.com



Although the information contained therein was provided from sources believed to be reliable, Apex Industrial makes no representation, expressed or implied, as to its accuracy and said information is subject to errors, omissions or changes.



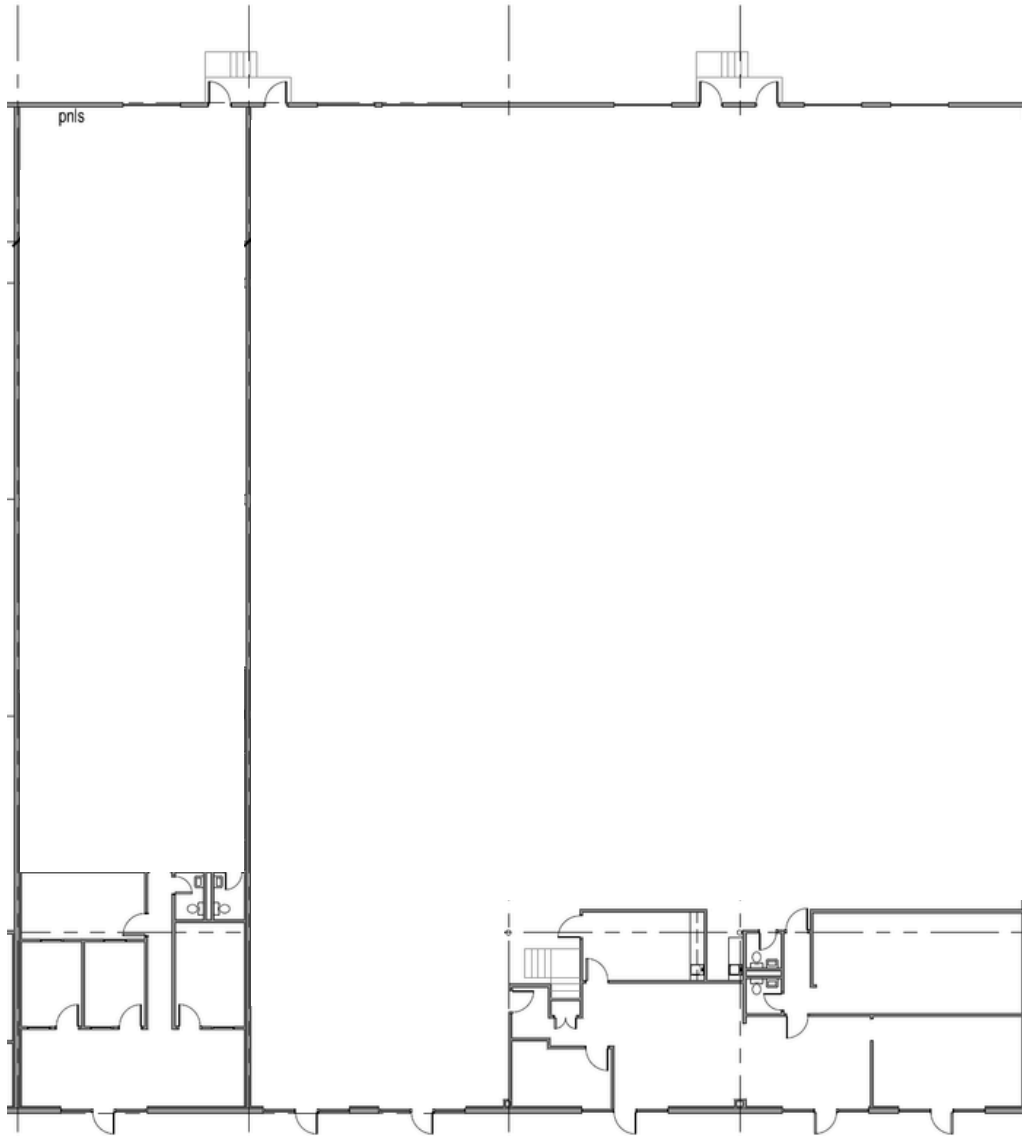
4,480 - 19,600 SF AVAILABLE | ENDCAP SUITE

3482 OAKCLIFF ROAD

SUITES F - H | DORAVILLE, GA 30340

FLOOR PLAN

OWNED BY:



For more information, please contact:

ANDY HEAD

Office: (404) 595 - 1466
Cell: (404) 713 - 4601
ahead@apexindustrialre.com

TREY WEGHORST

Office: (770) 264 - 9420
Cell: (404) 276 - 9314
tweghorst@apexindustrialre.com

MORGAN MCMENAMY

Office: (404) 806 - 6631
Cell: (404) 771 - 1199
mmcmenamya@apexindustrialre.com



Although the information contained therein was provided from sources believed to be reliable, Apex Industrial makes no representation, expressed or implied, as to its accuracy and said information is subject to errors, omissions or changes.



4,480 - 19,600 SF AVAILABLE | ENDCAP SUITE

3482 OAKCLIFF ROAD

SUITES F - H | DORAVILLE, GA 30340

OWNED BY:



BUILDING AERIAL

Endcap suite with opportunity for fenced industrial outdoor storage.



For more information, please contact:

ANDY HEAD

Office: (404) 595 - 1466
Cell: (404) 713 - 4601
ahead@apexindustrialre.com

TREY WEGHORST

Office: (770) 264 - 9420
Cell: (404) 276 - 9314
tweghorst@apexindustrialre.com

MORGAN MCMENAMY

Office: (404) 806 - 6631
Cell: (404) 771 - 1199
mmcmenamy@apexindustrialre.com



Although the information contained therein was provided from sources believed to be reliable, Apex Industrial makes no representation, expressed or implied, as to its accuracy and said information is subject to errors, omissions or changes.