



Completely Upgraded ■ Under New Ownership

SouthPointe Commerce Center

711 Southwood Ave., Columbus, Ohio 43207

Property Features

- New Roof 2026
- ±52,100 SF of Warehouse Spaces
- ±5,000 - 20,000 SF of Office Space
- Located on ±13 Acres
- Up to 25' Ceiling Height in Warehouse
- Multiple Docks and Drive-In Doors (16'x16')
- Bonus Basement Space at \$0.75/SF
- Heavy Electrical Power
- 2-Ton Crane
- Zoned Industrial Manufacturing
- OpEx: \$1/SF
- www.southpointecommerce.com

***Special Lease Rate: \$4.95 SF/YR (NNN) First Year
on Qualified 5 Year Lease
Regular Lease Rate: \$5.95 SF/YR (NNN)**



For more information:

Dan Sheeran, Jr.

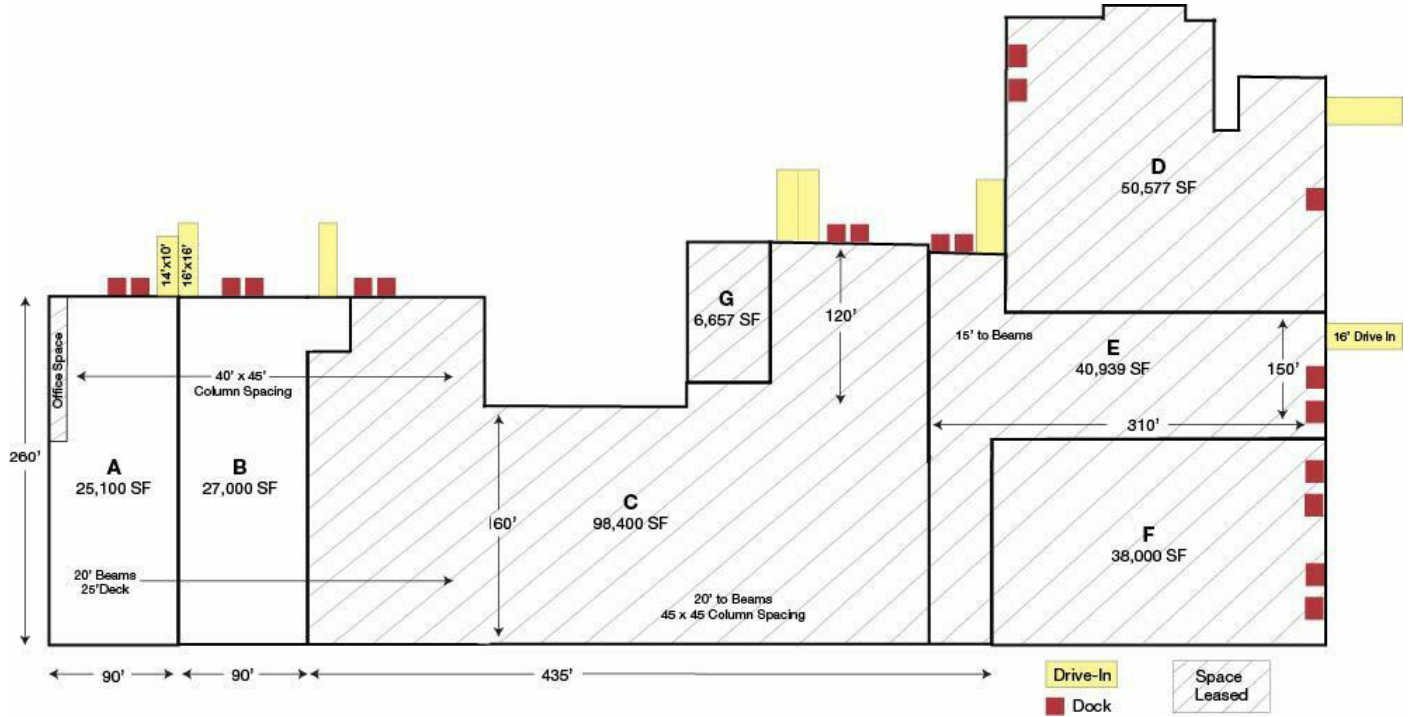
614 629 5228 • djsheeran@ohioequities.com

Mike Semon

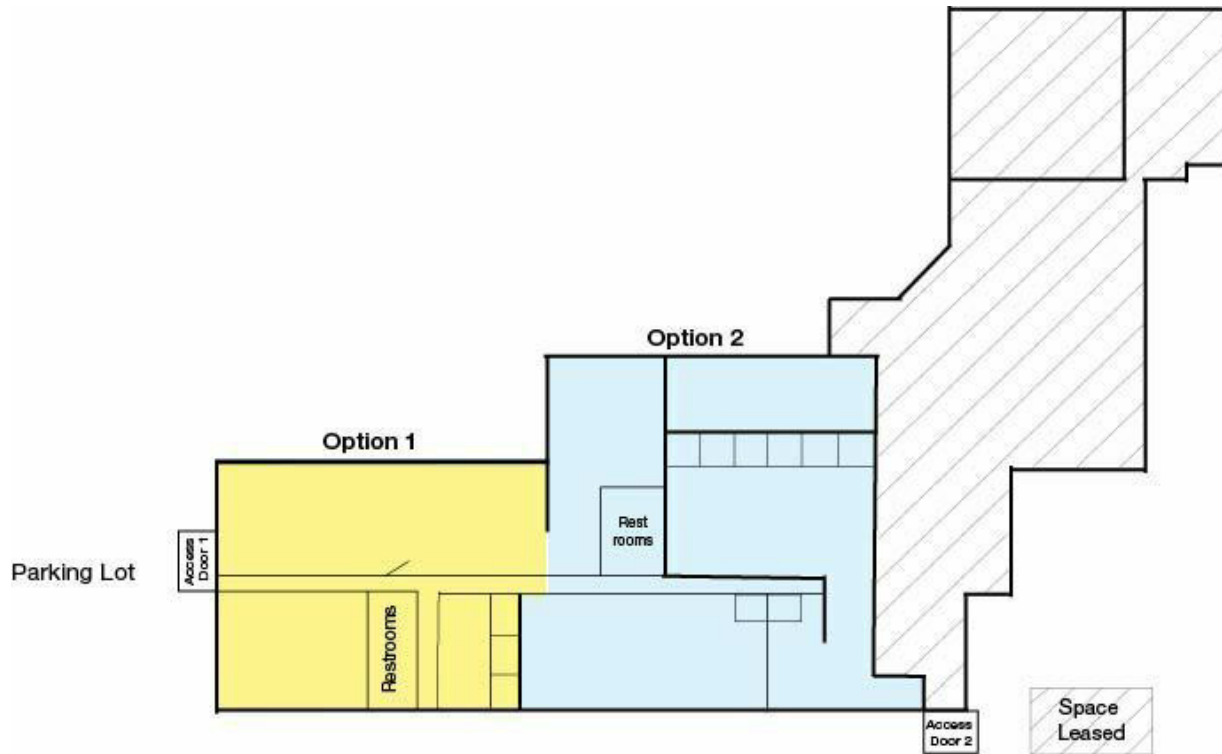
614 629 5217 • msemon@ohioequities.com

Dan Sheeran

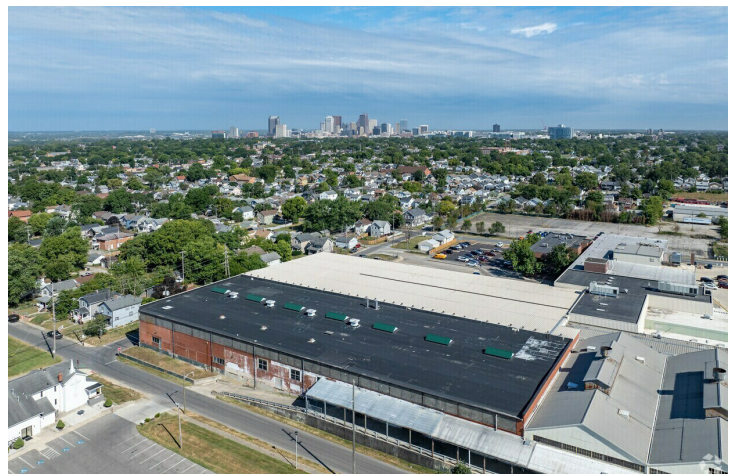
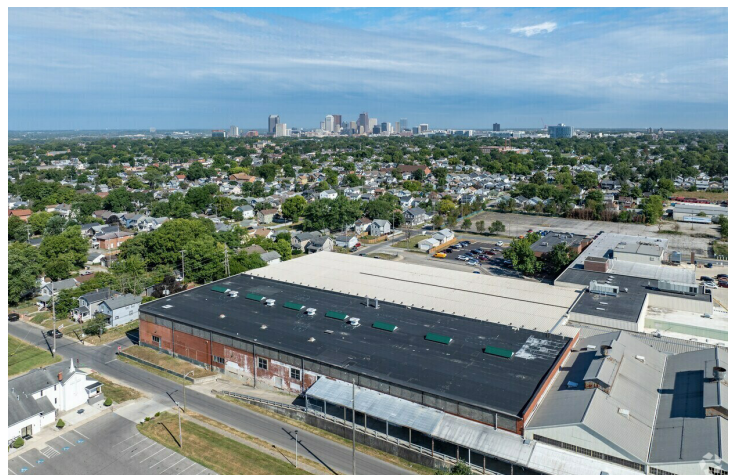
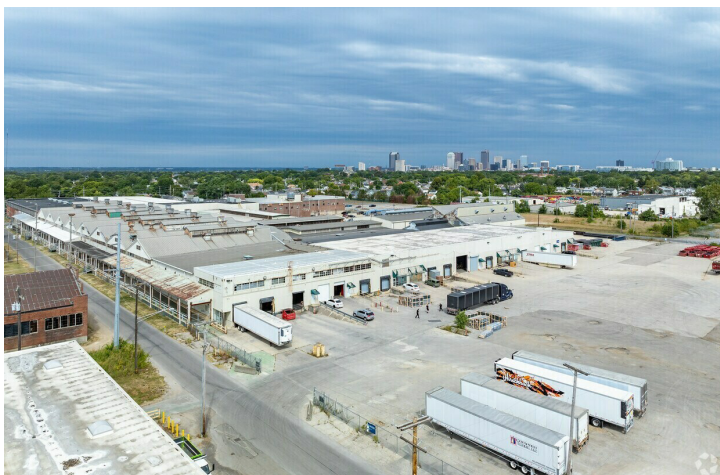
614 629 5216 • dsheeran@ohioequities.com

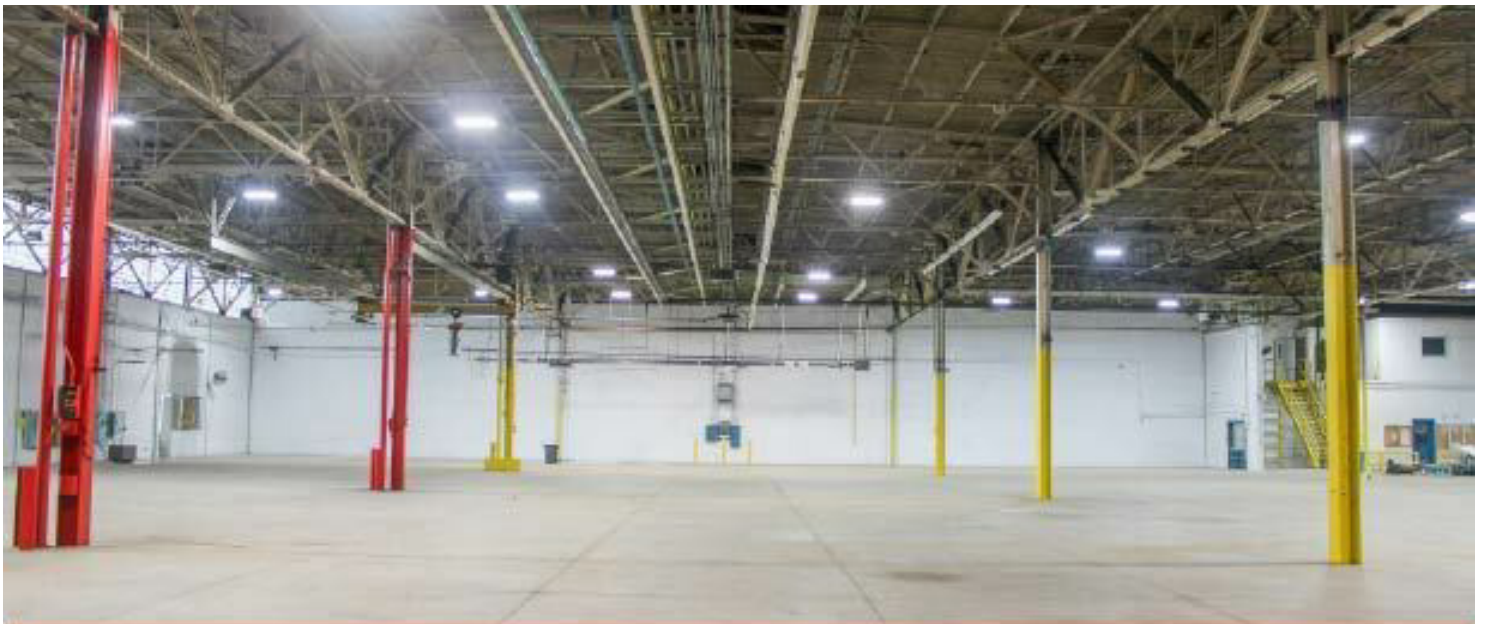


SPACE	DOCKS	DRIVE-INS	LEASE RATE	LEASE TYPE	SIZE (SF)	AVAILABILITY
Space A (1,700 SF Office)	2	1	\$4.95 SF/YR	NNN	25,100 SF	VACANT
Space B	2	2	\$4.95 SF/YR	NNN	27,000 SF	VACANT
Space C	4	3	\$5.25 SF/YR	NNN	98,400 SF	Leased
Space D	3	2	\$5.25 SF/YR	NNN	50,577 SF	Leased
Space E	4	1	\$5.25 SF/YR	NNN	40,939 SF	Leased
Space F	4		\$5.25 SF/YR	NNN	38,000 SF	Leased
Space G		1	\$5.25 SF/YR	NNN	6,657 SF	Leased

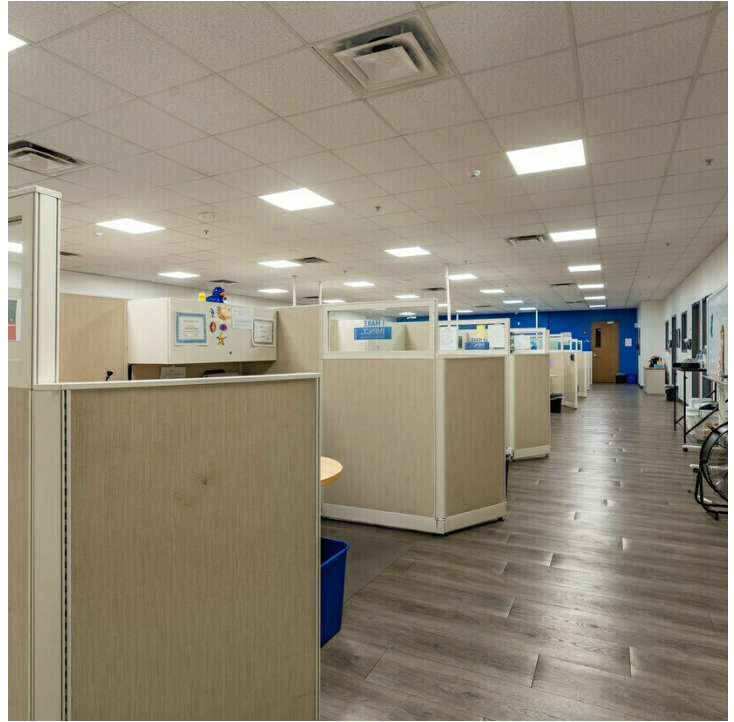


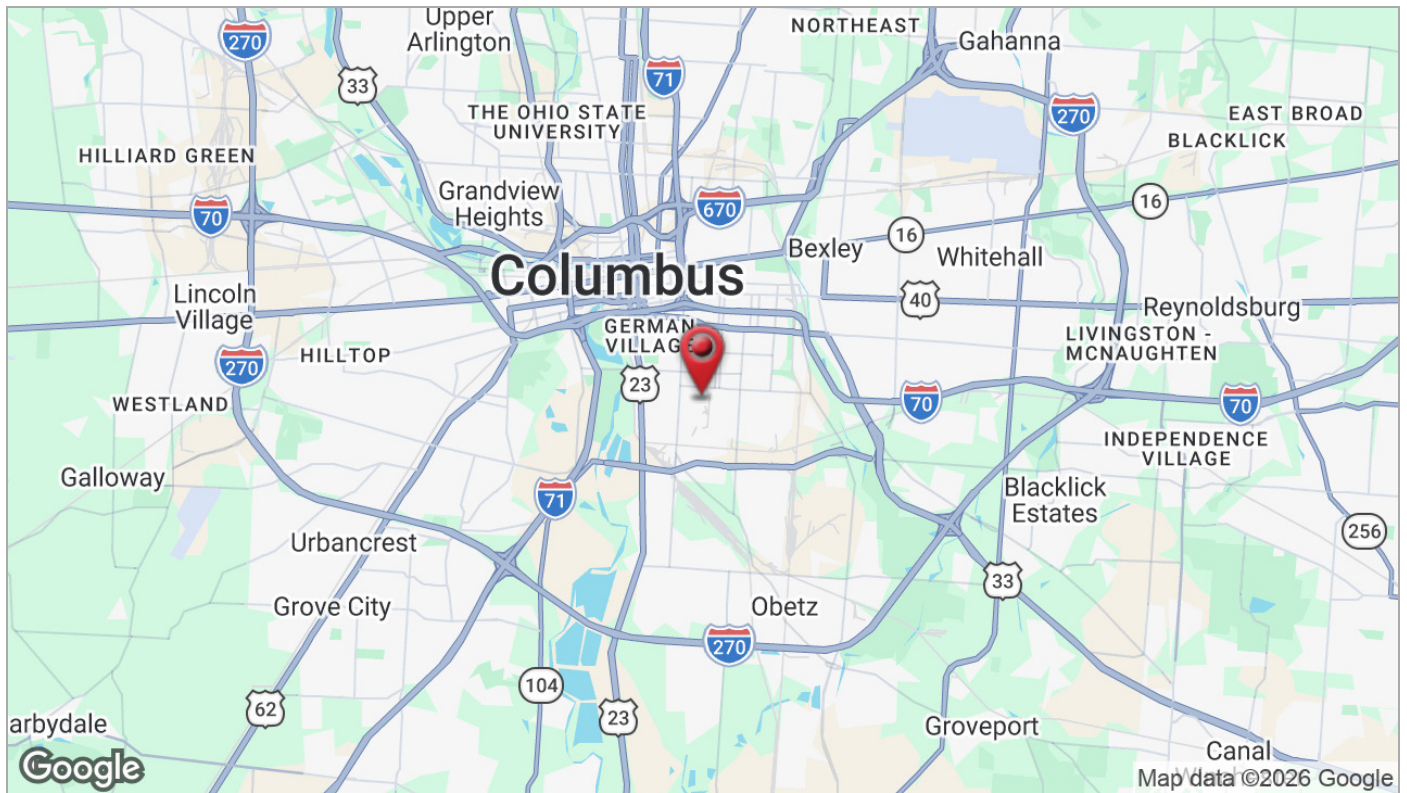
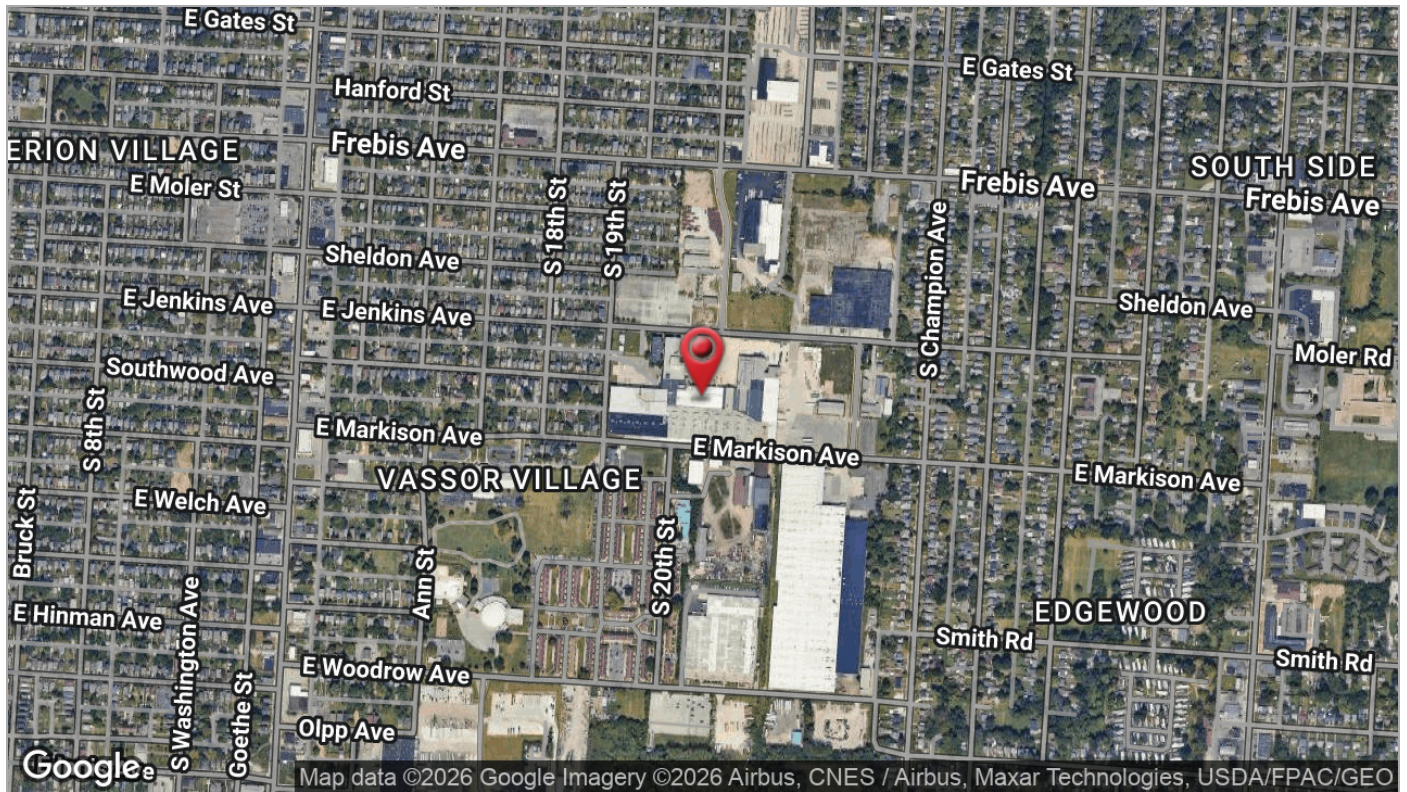
- First floor office areas from 5,000 - 20,000 SF with restrooms and private access
- 2 office layouts available based on tenant needs (all or part)

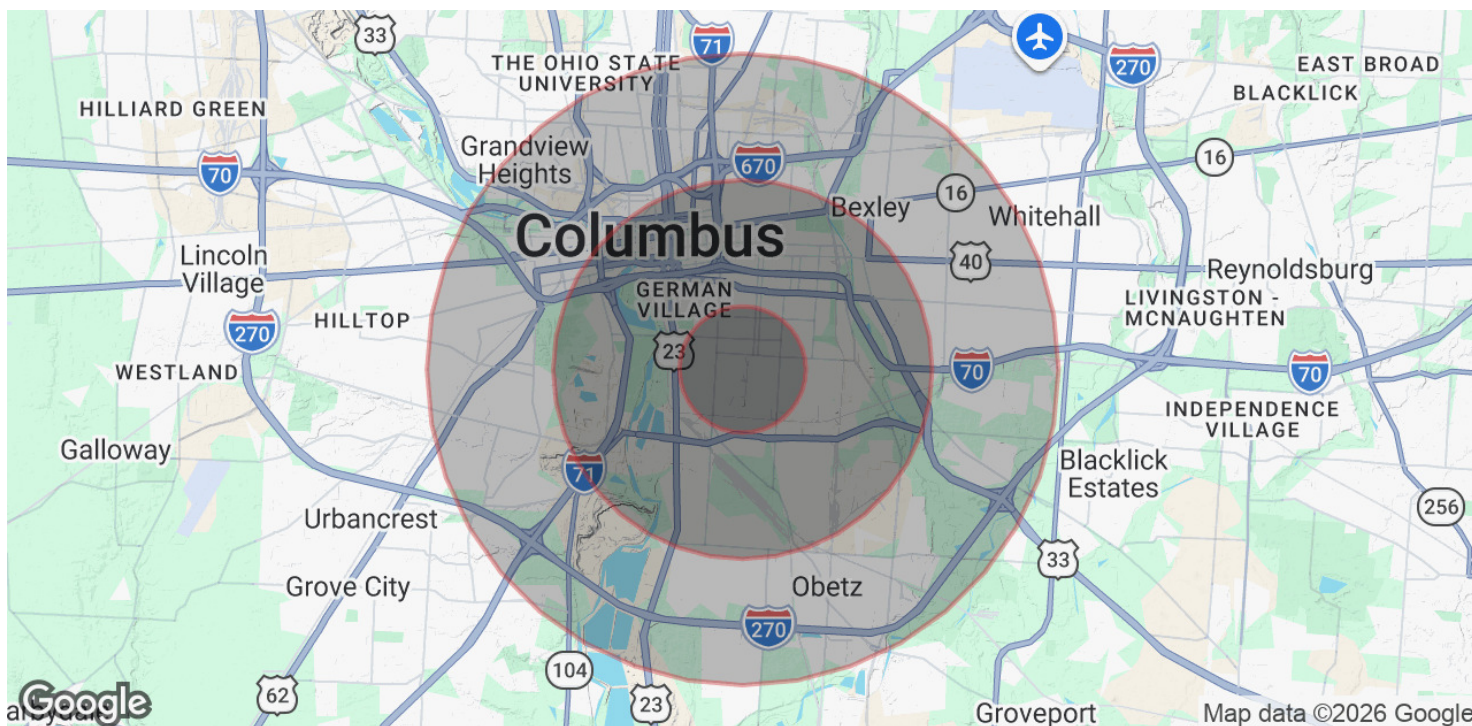




New Photos Coming Soon!







POPULATION	1 MILE	3 MILES	5 MILES
Total Population	17,513	95,091	263,712
Average Age	38	39	37
Average Age (Male)	38	38	36
Average Age (Female)	38	39	37
HOUSEHOLDS & INCOME	1 MILE	3 MILES	5 MILES
Total Households	7,650	44,064	113,772
# of Persons per HH	2.3	2.2	2.3
Average HH Income	\$70,792	\$76,430	\$77,190
Average House Value	\$236,234	\$336,872	\$310,041

2020 American Community Survey (ACS)