



**DAUM**  
COMMERCIAL REAL ESTATE SERVICES

EL SEGUNDO BLVD.

SANTA FE AVE.

E. CARLIN AVE.

# 520 & 526

## EL SEGUNDO BLVD.

COMPTON | CA

### ± 43,852 SF OF LAND AVAILABLE



FENCED  
YARD



13 MILES  
FROM PORTS



105 FWY  
PROXIMITY



12 MILES  
TO LAX

FOR MORE INFORMATION, CONTACT:

Brad Levin  
Executive Vice President | Principal  
310.538.6728  
blevin@daumcommercial.com  
CA License #01020885

Anthony Bergeman  SIO R  
Senior Director  
310.525.1920  
anthony.bergeman@cushwake.com  
CA License #01841828

**DAUM**  
COMMERCIAL REAL ESTATE SERVICES

**CUSHMAN & WAKEFIELD**

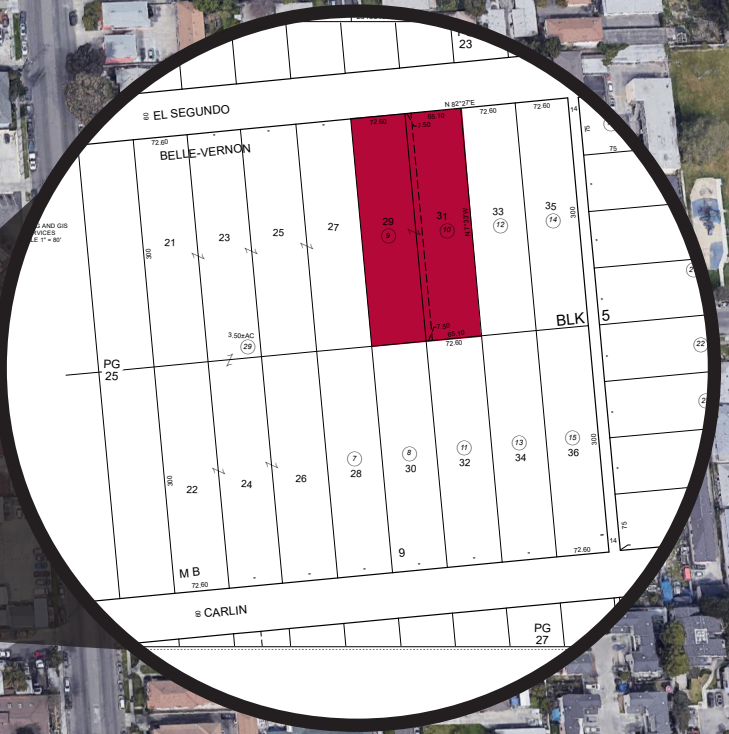
D/AQ Corp. #01129558. Maps Courtesy ©Google & ©Microsoft. Although all information is furnished regarding for sale, rental or financing is from sources deemed reliable, such information has not been verified and no express representation is made nor is any to be implied as to the accuracy thereof, and it is submitted subject to errors, omissions, changes of price, rental or other conditions, prior sale, lease or financing, or withdrawal without notice.

# 520 & 526

## EL SEGUNDO BLVD.

COMPTON | CA

EL SEGUNDO BLVD.



E. CARLIN ST.

N. SANTA FE AVE.



# FOR LEASE

## ± 43,852 SF OF LAND

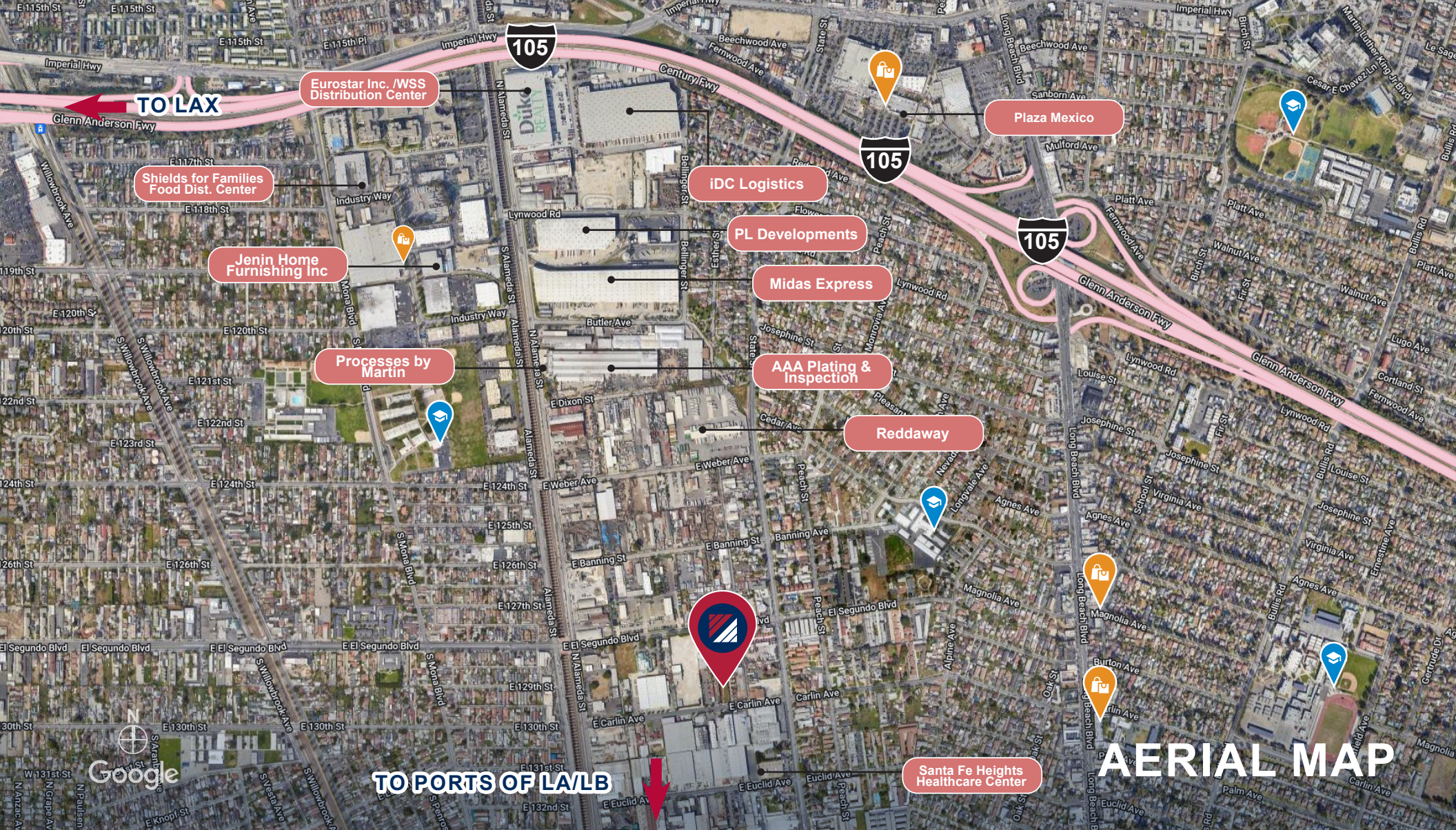
### PROPERTY FEATURES

- Prime Alameda Corridor Adjacent Location
- Excellent Access to the 105, 710, 110 & 91 Freeways
- 13 miles to Ports of Long Beach and Los Angeles
- 12 miles to LAX
- Fenced Yard
- Can be combined with 529 & 533 Carlin Street for a total of ± 87,421 SF

D/AQ Corp. #01129558. Maps Courtesy ©Google & ©Microsoft. Although all information is furnished regarding for sale, rental or financing is from sources deemed reliable, such information has not been verified and no express representation is made nor is any to be implied as to the accuracy thereof, and it is submitted subject to errors, omissions, changes of price, rental or other conditions, prior sale, lease or financing, or withdrawal without notice.

**DAUM**  
COMMERCIAL REAL ESTATE SERVICES

**CUSHMAN & WAKEFIELD**



**FOR LEASE**  
**± 43,852 SF OF LAND**

**520 & 526**  
**EL SEGUNDO BLVD.**  
 COMPTON | CA

FOR MORE INFORMATION, CONTACT:

**Brad Levin**  
 Executive Vice President | Principal  
 310.538.6728  
 blevin@daumcommercial.com  
 CA License #01020885

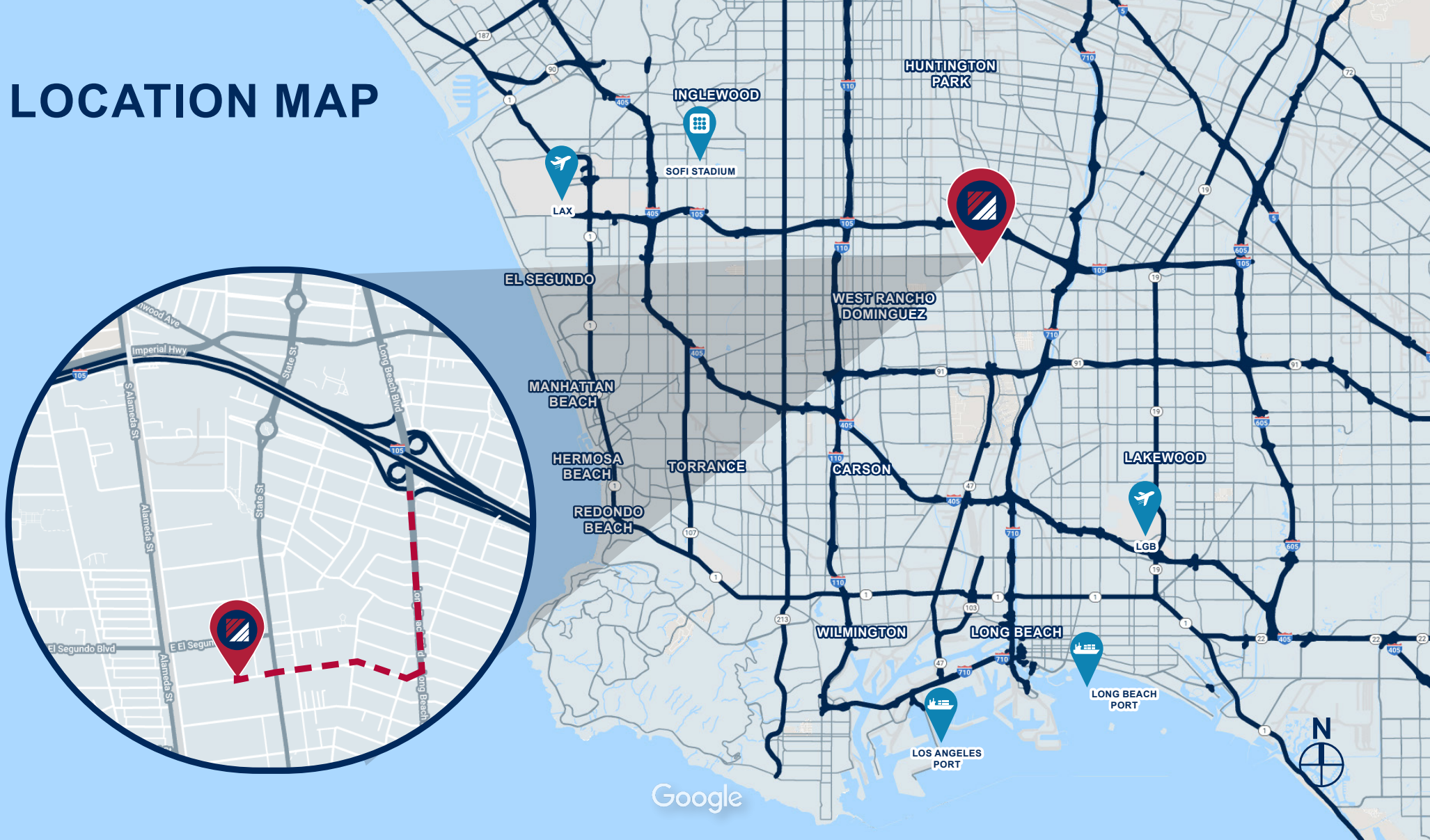
**Anthony Bergeman**  **Senior Director**  
 310.525.1920  
 anthony.bergeman@cushwake.com  
 CA License #01841828

**AERIAL MAP**

D/AQ Corp. #01129558. Maps Courtesy ©Google & ©Microsoft. Although all information is furnished regarding for sale, rental or financing is from sources deemed reliable, such information has not been verified and no express representation is made nor is any to be implied as to the accuracy thereof, and it is submitted subject to errors, omissions, changes of price, rental or other conditions, prior sale, lease or financing, or withdrawal without notice.



# LOCATION MAP



**FOR LEASE**  
 ± 43,852 SF OF LAND

**520 & 526**  
**EL SEGUNDO BLVD.**  
 COMPTON | CA

FOR MORE INFORMATION, CONTACT:  
 Brad Levin  
 Executive Vice President | Principal  
 310.538.6728  
 blevin@daumcommercial.com  
 CA License #01020885

Anthony Bergeman   
 Senior Director  
 310.525.1920  
 anthony.bergeman@cushwake.com  
 CA License #01841828

D/AQ Corp. #01129558. Maps Courtesy ©Google & ©Microsoft. Although all information is furnished regarding for sale, rental or financing is from sources deemed reliable, such information has not been verified and no express representation is made nor is any to be implied as to the accuracy thereof, and it is submitted subject to errors, omissions, changes of price, rental or other conditions, prior sale, lease or financing, or withdrawal without notice.

