

AVAILABLE FOR SUBLEASE | ±6,767 SF

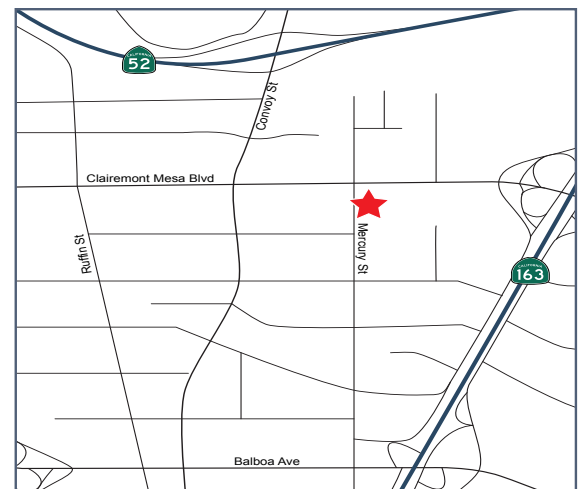
KEARNY MESA COMMERCE PARK

4935 Mercury Street • San Diego, California 92111



PROPERTY FEATURES

- ±6,767 SF Suite Available
- Approx. 15% Office/ 85% Warehouse
- 2 Dock Level Truck Doors
- 20'- 22' Clear Height
- Cold Storage
- Abundant Parking
- Excellent Freeway Access
- 200 Amps of Three Phase Power
- Sublease Term Thru July 31, 2032
- Available Immediately



Lease Rate: \$2.05/SF Gross

GREG MARX, SIOR

Senior Vice President | Lic. #01940696
858.458.3302 | gmarx@voitco.com

RANDY LaCHANCE

Executive Vice President | Lic. #00969674
858.458.3374 | rlachance@voitco.com

Voit

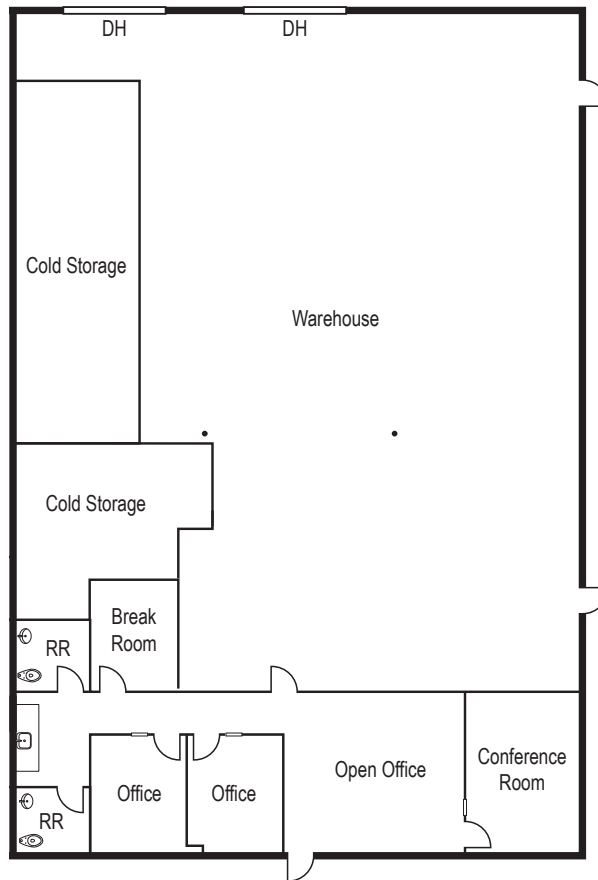
REAL ESTATE SERVICES

KEARNY MESA COMMERCE PARK

4935 Mercury Street • San Diego, California 92111

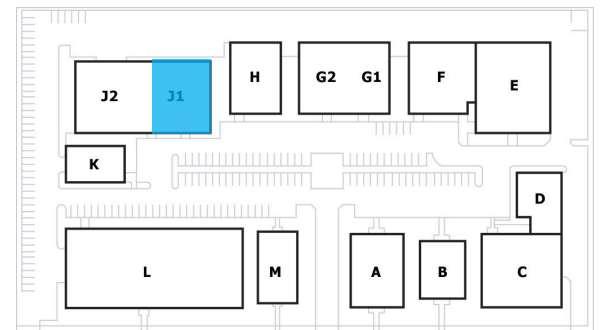
FLOOR PLAN

4935 Mercury St., Suite J1
±6,767 SF



*Existing Cold Storage could be removed

SITE PLAN



Mercury Street

GREG MARX, SIOR

Senior Vice President | Lic. #01940696
858.458.3302 | gmarx@voitco.com

RANDY LaCHANCE

Executive Vice President | Lic. #00969674
858.458.3374 | rlachance@voitco.com

Voit

REAL ESTATE SERVICES

4180 La Jolla Village Drive, Suite 100, La Jolla, CA 92037 | 858.453.0505 | 858.408.3976 Fax | Lic #01991785 | www.voitco.com

Licensed as a Real Estate Broker and Salesperson by the DRE. ©2026 Voit Real Estate Services, Inc.. The information contained herein has been obtained from sources we deem reliable. While we have no reason to doubt its accuracy, we do not guarantee it.