



13027 Harmon Rd

13027 Harmon Rd, Fort Worth, TX 76177



Tom Murphy

KW Commercial

2106 E State Highway 114, Suite 101, Southlake, TX 76092

tom.murphy@kw.com

(817) 329-8850



13027 Harmon Rd

\$13.50 /SF/YR

4,000 SF of Flex Space for Lease. Fully HVAC'd | Two Offices | Two Private Restrooms | Mezzanine | Two Overhead Roll Up Doors | Ample Storage



Rental Rate: \$13.50 /SF/YR

Property Type: Industrial

Property Subtype: Warehouse

Rentable Building Area: 12,000 SF

Year Built: 2023

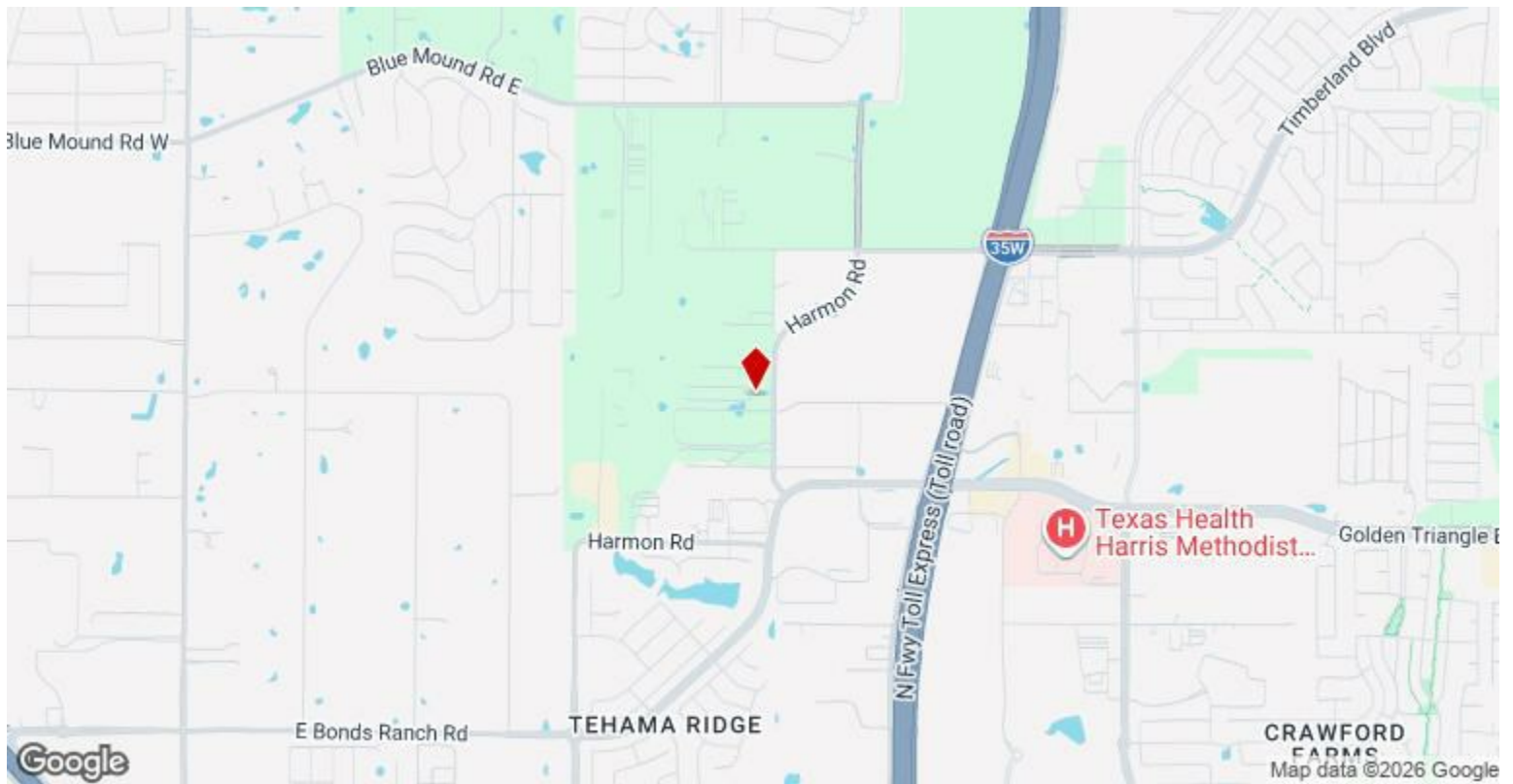
:

1st Floor Ste 701-703

Flex space available for lease.

1

Space Available	4,000 SF
Rental Rate	\$13.50 /SF/YR
Date Available	June 12, 2026
Service Type	Triple Net (NNN)
Space Type	Relet
Space Use	Flex
Lease Term	3 - 10 Years



13027 Harmon Rd, Fort Worth, TX 76177

Discover the limitless potential of 13027 Harmon Rd in Fort Worth, TX.? This pristine commercial building, fresh from development, presents a flexible warehouse space spanning 4000 square feet.? Unburdened by zoning restrictions, it offers boundless opportunities to adapt and customize to the unique needs of your business, whether you're a burgeoning start-up or an established enterprise looking to expand.? Featuring a robust infrastructure to support all your operations, the space comes with ample room for storage, distribution, and many other industrial applications.? Its location is strategically chosen for convenience and accessibility, offering seamless connectivity to major transportation routes and I-35W for efficient logistics and supply chain operations.? The building also incorporates modern design elements to ensure the comfort and productivity of your team.? From the clear-span structure for optimal layout flexibility to high ceilings for a conducive work environment, every detail has been carefully thought out.?

Property Photos

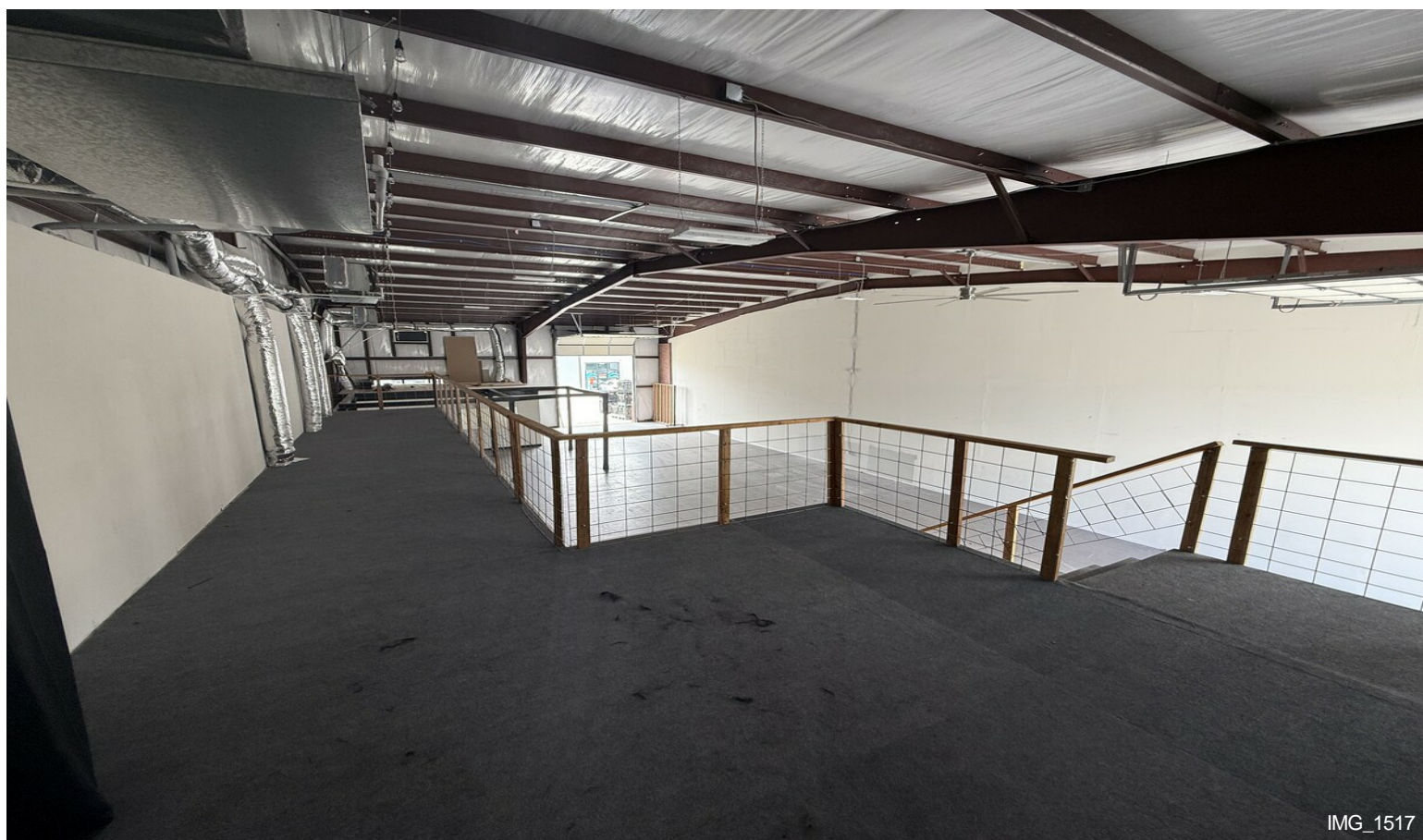
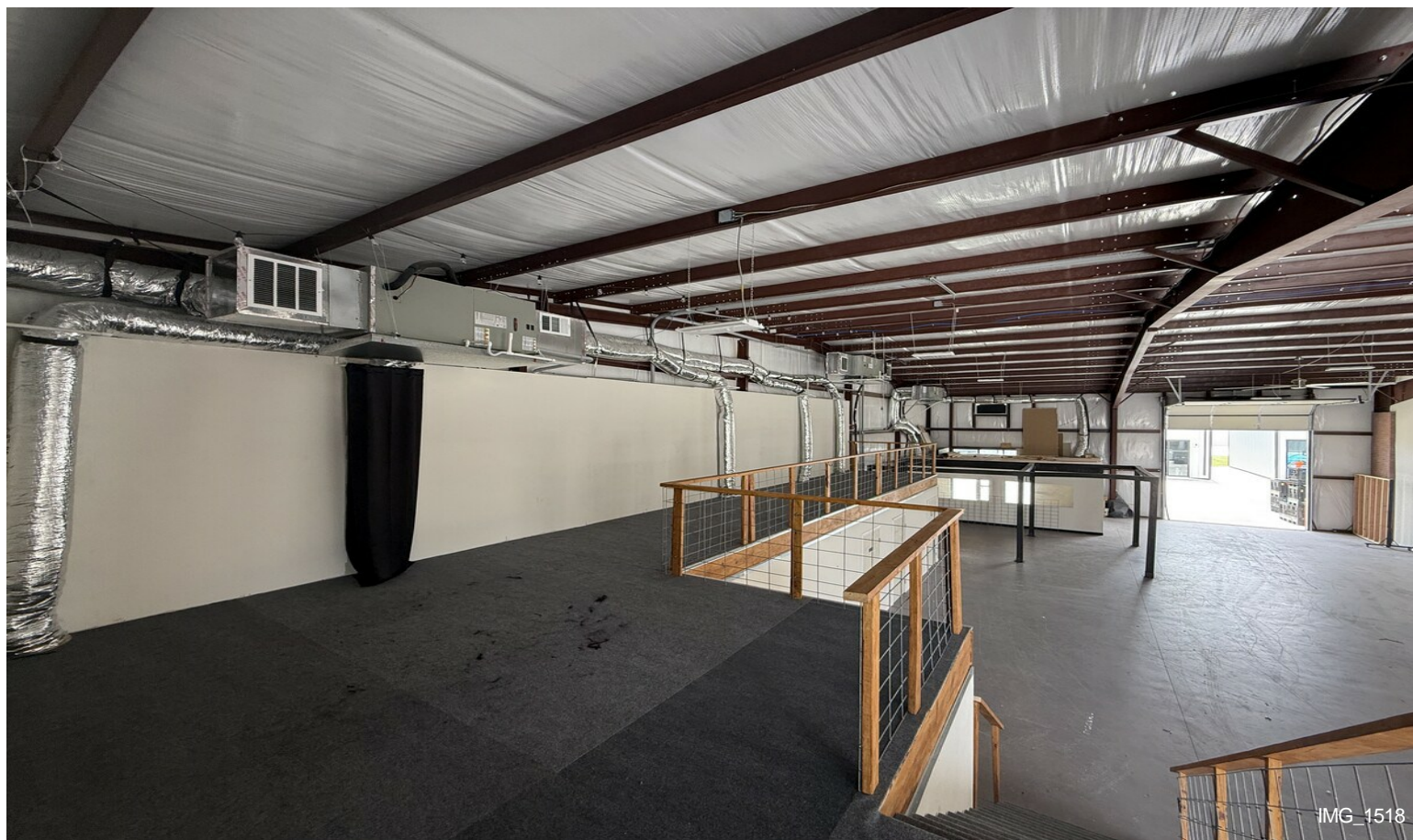


IMG_1519

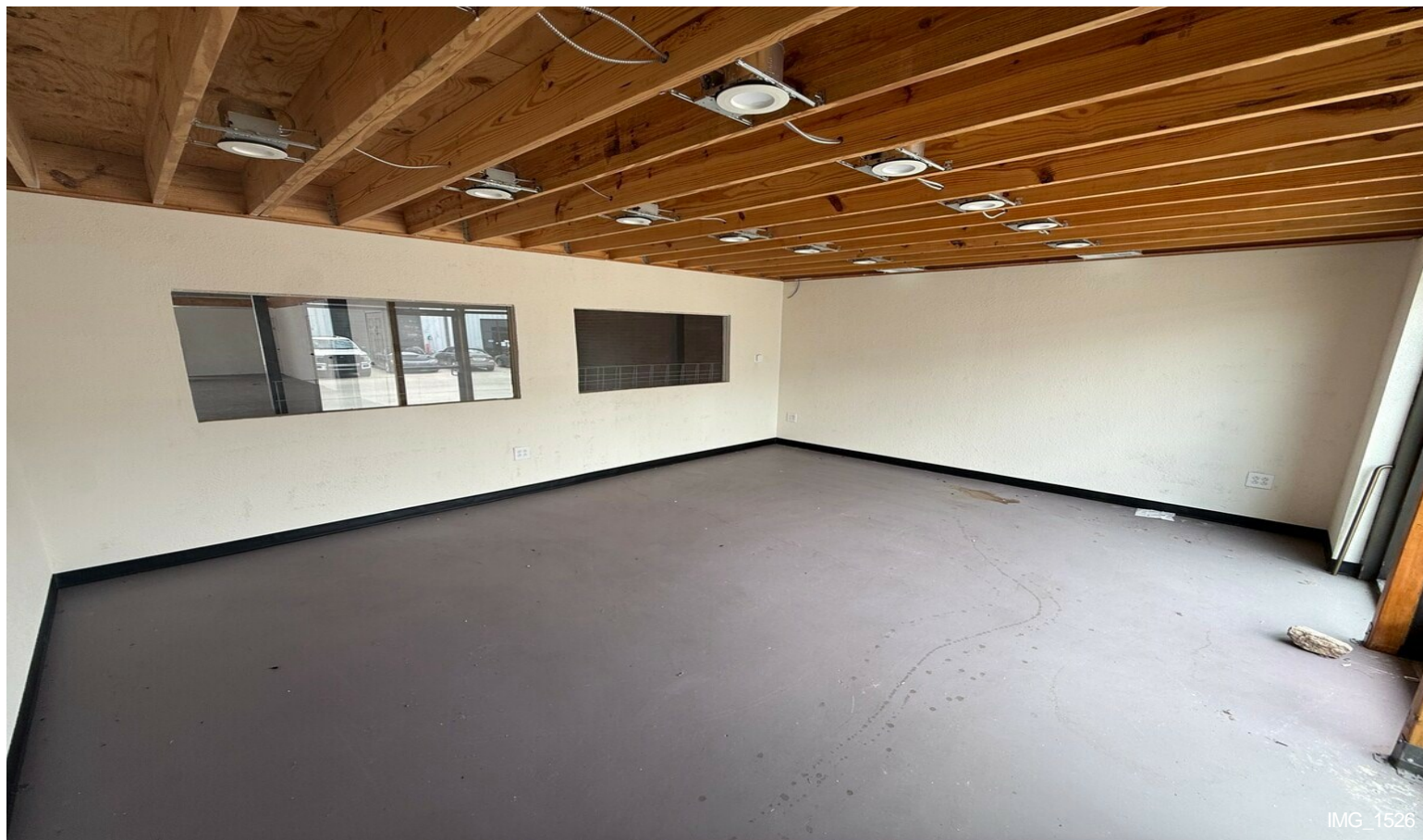


IMG_1520

Property Photos



Property Photos



Property Photos



IMG_1527



IMG_1528

Property Photos

