

# DES MOINES CREEK

## Business Park West

405,680 SF

[www.DesMoinesCreekWest.com](http://www.DesMoinesCreekWest.com)

Under Construction



FOR LEASE

1800 S 216<sup>th</sup> St  
Des Moines, WA



**NEWMARK**

**km** Kidder Mathews

**PANATTONI**

Port of Seattle

**THAD MALLORY, SIOR** [thad.mallory@nmrk.com](mailto:thad.mallory@nmrk.com) | 425-362-1410

**CHRIS CORR, SIOR** [chris.corr@kidder.com](mailto:chris.corr@kidder.com) | 206-248-7324

**TAYLOR HOFF, SIOR** [taylor.hoff@nmrk.com](mailto:taylor.hoff@nmrk.com) | 425-362-1388

# SITE PLAN

## Building Details



### ADDRESS

1800 S 216th St, Des Moines, WA



### TOTAL BUILDING SF

405,680 SF



### OFFICE SF

BTS



### CLEAR HEIGHT

40'



### LOADING

56 Dock High Doors  
2 Grade Level Doors



### PARKING

313 Auto Stalls  
68 Trailer Stalls

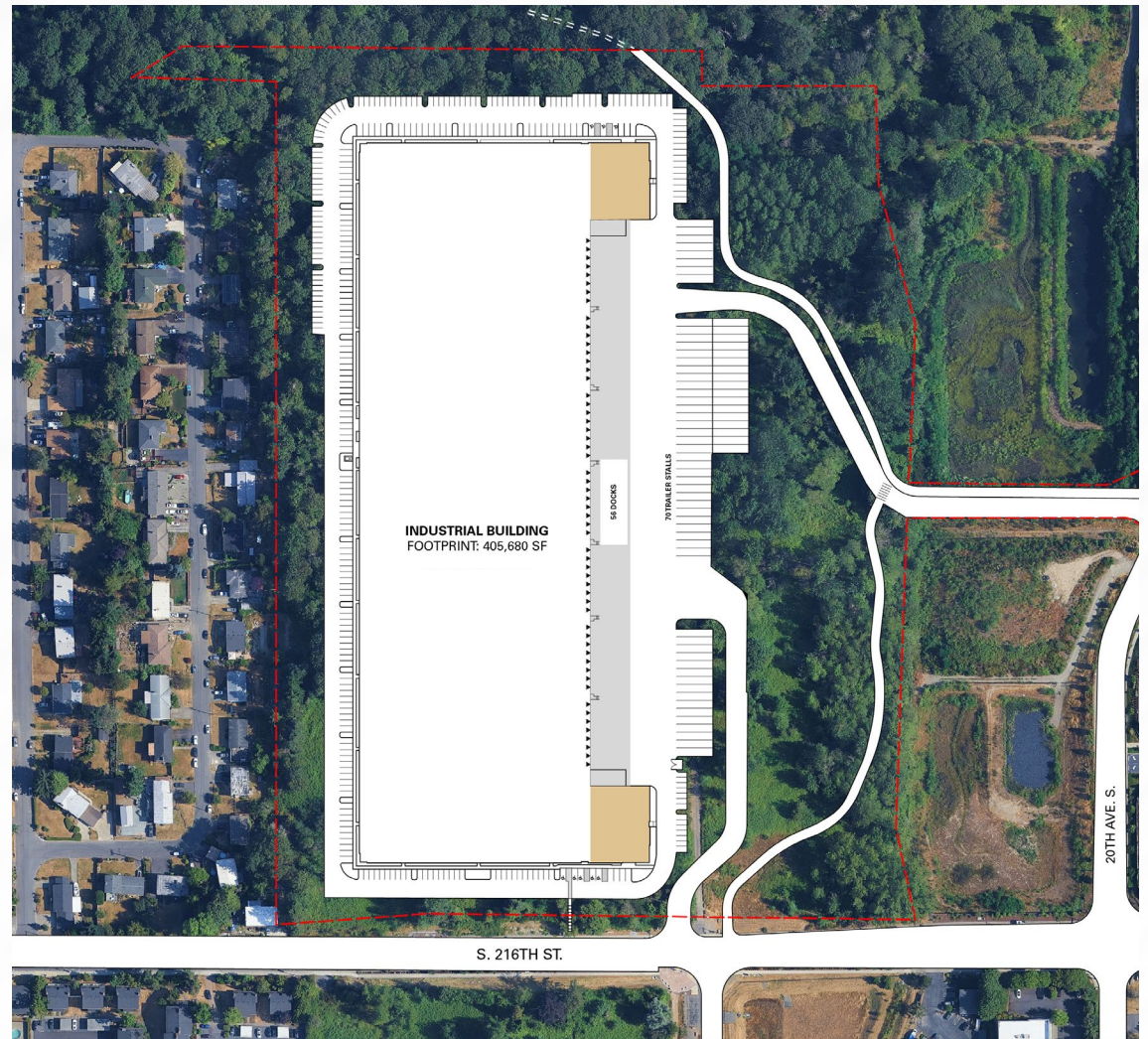


### POWER

3,000 AMPS, 277/480V 3-Phase  
Ability to Increase  
(To Be Independently Verified)

## Property Highlights

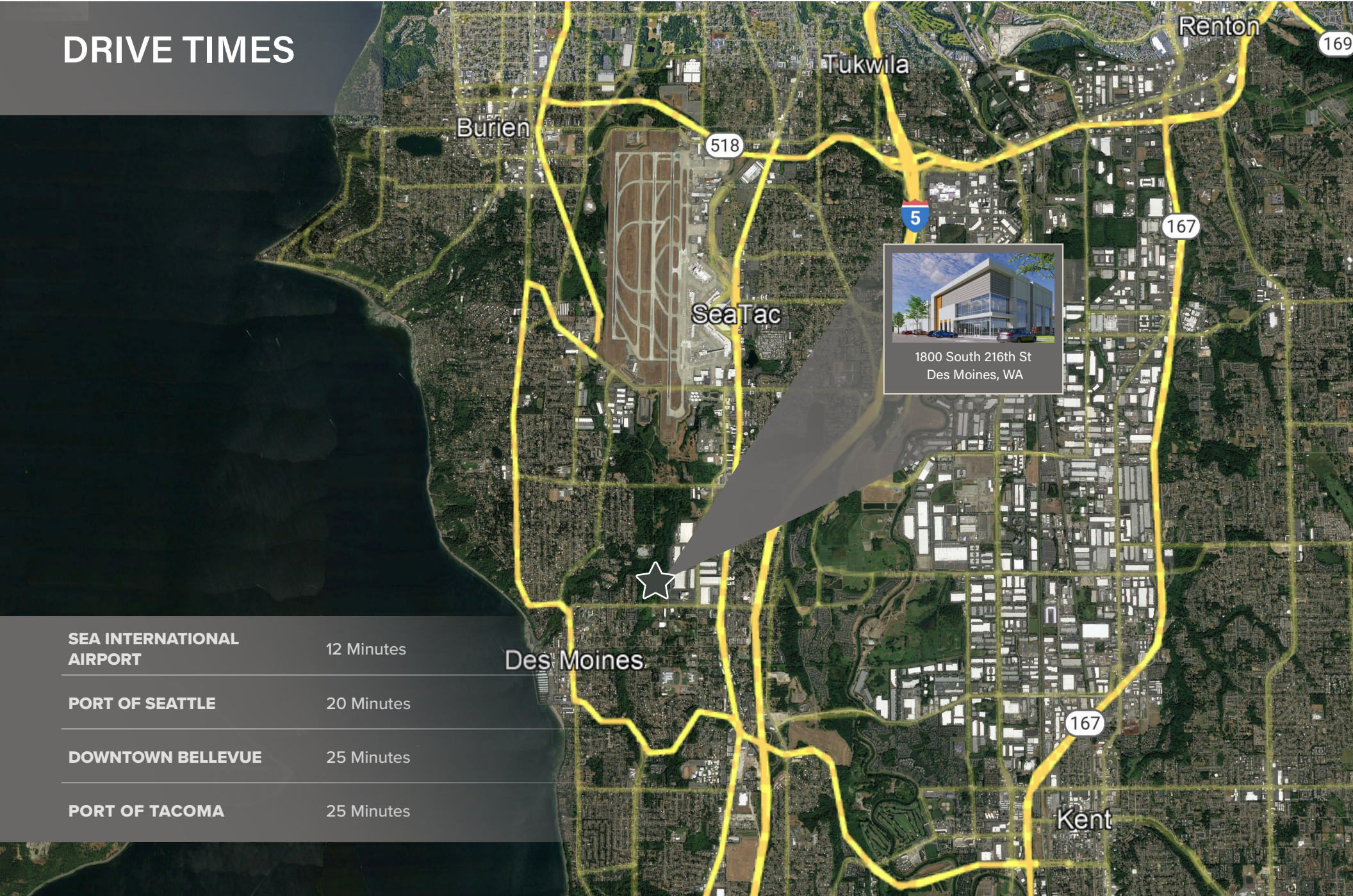
- Available for occupancy August 1, 2026
- Immediate access to I-5
- ESFR fire protection
- LED warehouse lighting and exterior wall pack lighting



# DEVELOPMENT PROGRESS



# DRIVE TIMES



# SITE BENEFITS

- Last opportunity of this size in the Des Moines area
- Adjacent to walking paths and wetland preservation centers
- Located next to FAA Headquarters
- Close to SEA International Airport
- Easy Access to I-5
- Proximity to Light Rail



# DEMOGRAPHICS

## Des Moines Fast Facts:

**Population:** 33,857

**Labor Force:** 18,009

**Unemployment:** 7.4%

**Median Age:** 39 years

**Median Household Income:** \$82,554

**Cost of Living Index:** 128.4

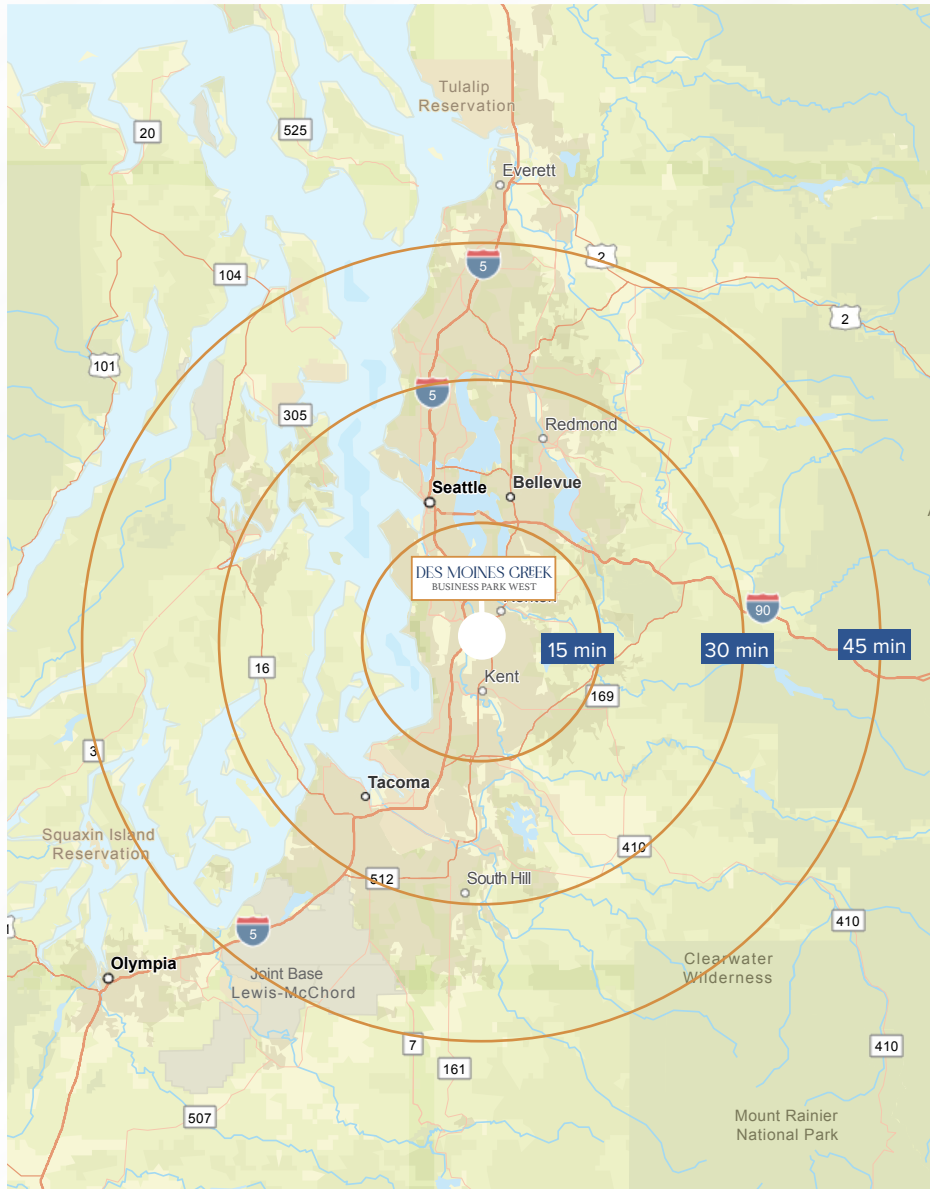
**Area:** 7.41 sq mi

**Median Home Price:** \$484,925

**Average Commute Time:** 30 minutes

**Gross Metro Product:** \$56.2M

**Primary Industries:** Professional Services, Manufacturing,  
Transportation/Utilities, Construction



## Travel Times for Map

**15 min:** Kent, SeaTac

**30 min:** Seattle, Auburn, Renton

**45 min:** Lakewood, Shoreline, Bothell