

The Gesco
Suite Collection
Phase II

STUCK
TOWER

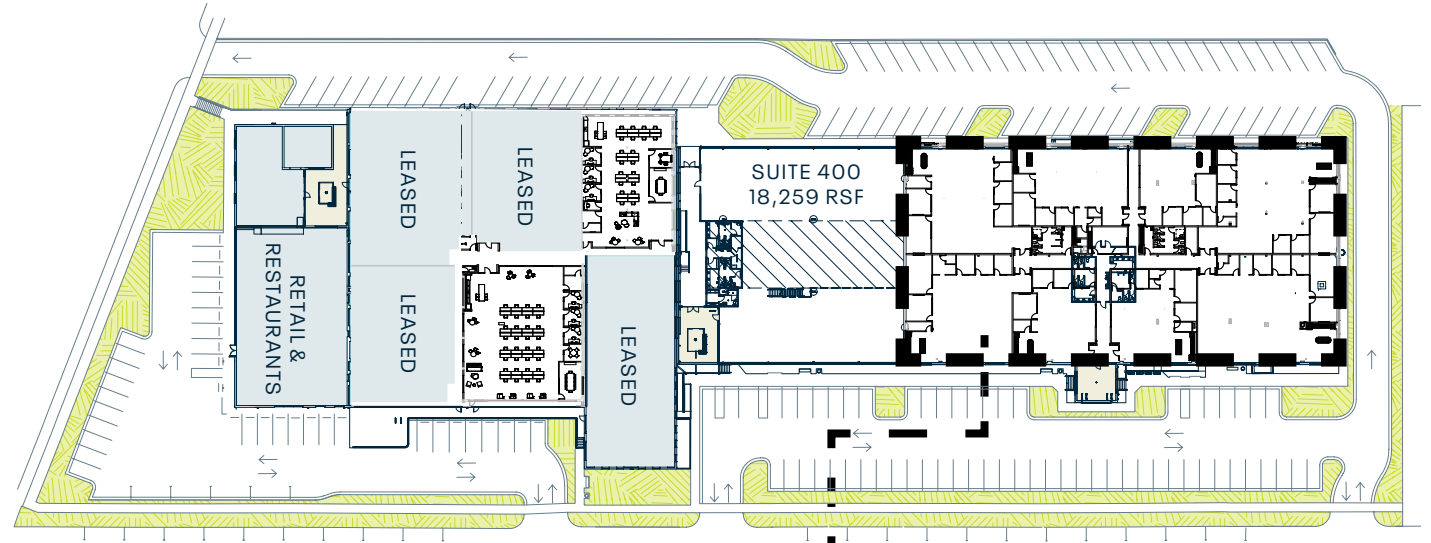


8 NEW CUSTOM SPEC SUITES
RANGING FROM 2,251 - 5,369 SF

LOWER
TUCK

Spec Suites

800 GESCO STREET



Suite 510

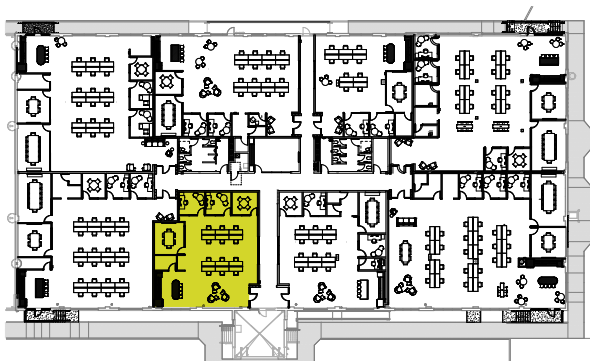
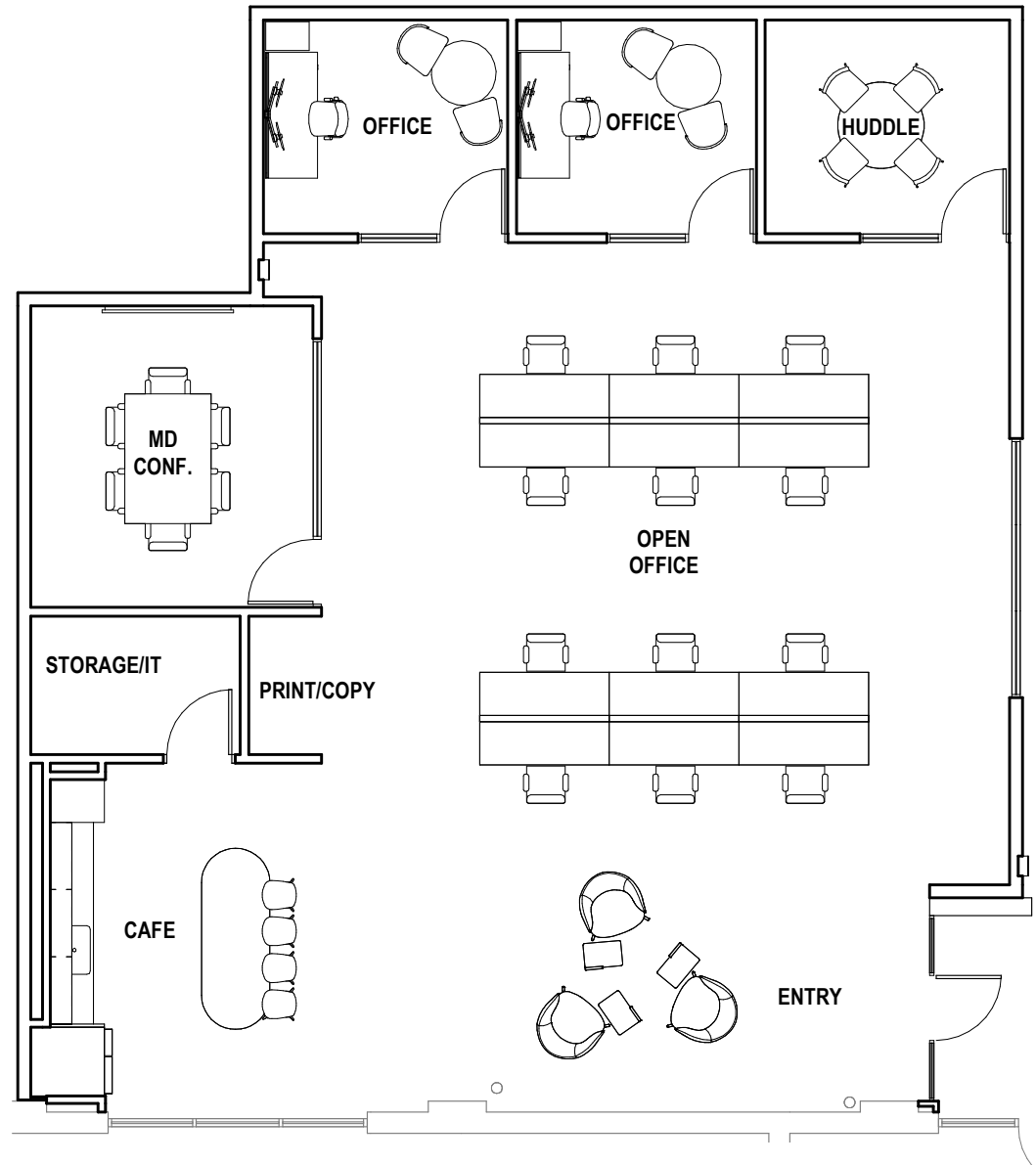
2,642 RSF

PROGRAM FEATURES

2 PRIVATE OFFICES

1 MEDIUM CONFERENCE ROOM

1 HUDDLE ROOM

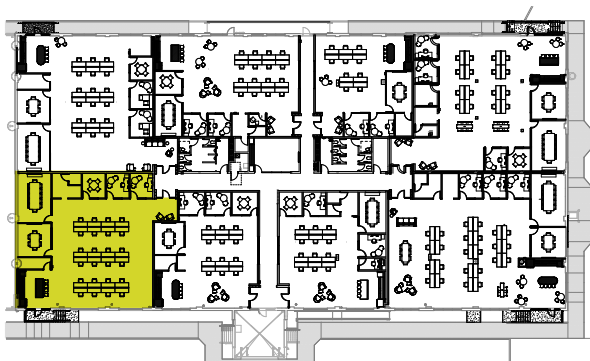
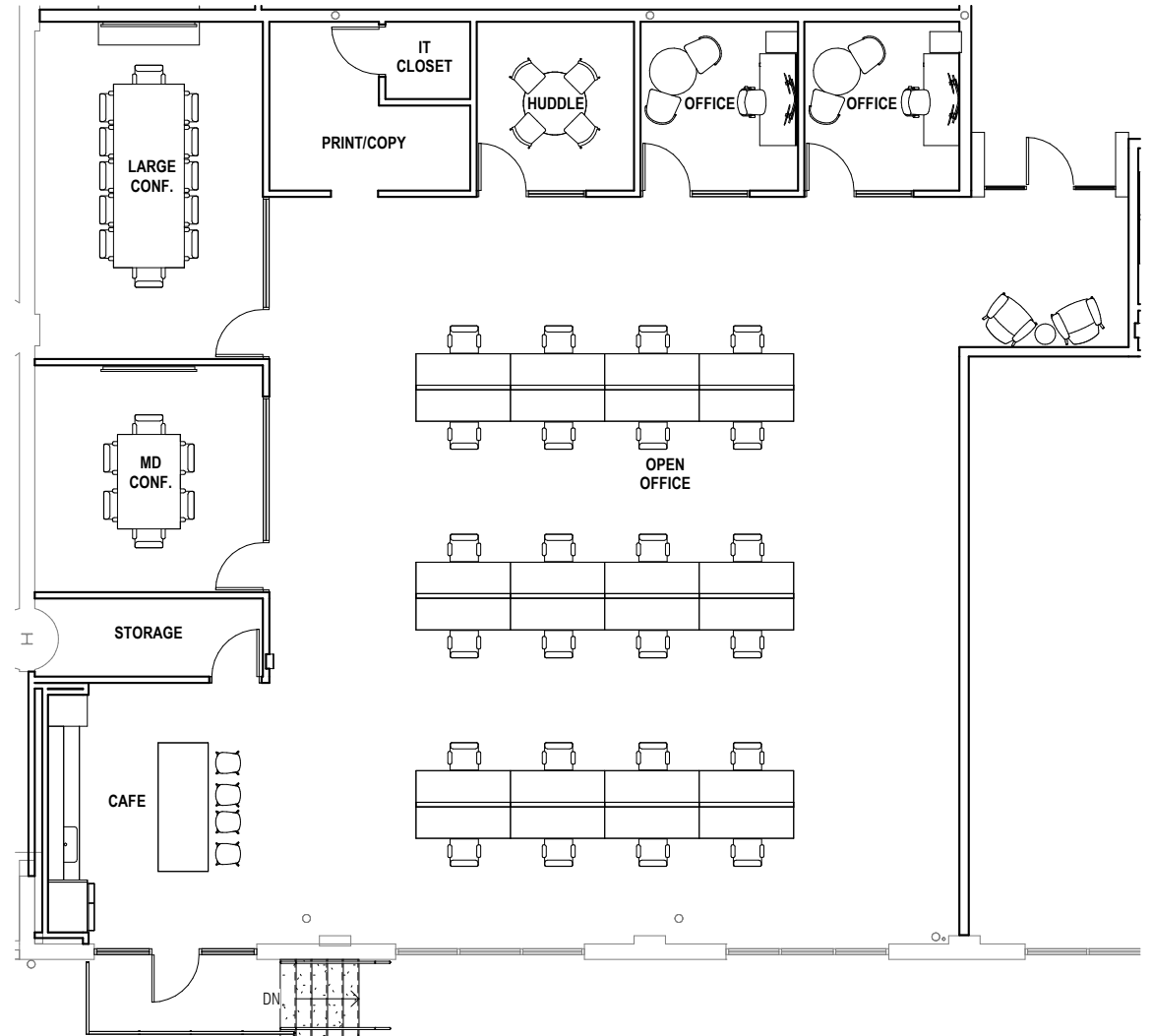


Suite 520

4,432 RSF

PROGRAM FEATURES

- 2 PRIVATE OFFICE
- 1 LARGE CONFERENCE ROOM
- 1 MEDIUM CONFERENCE ROOM
- 1 HUDDLE ROOM



Suite 530

4,400 RSF

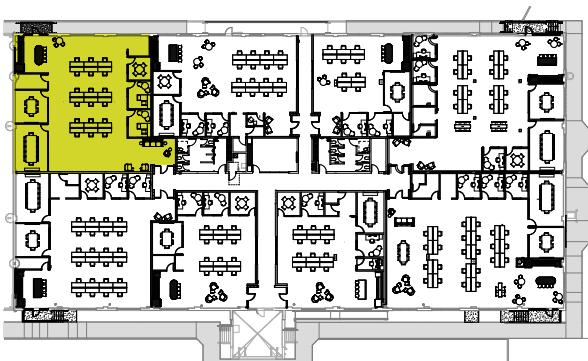
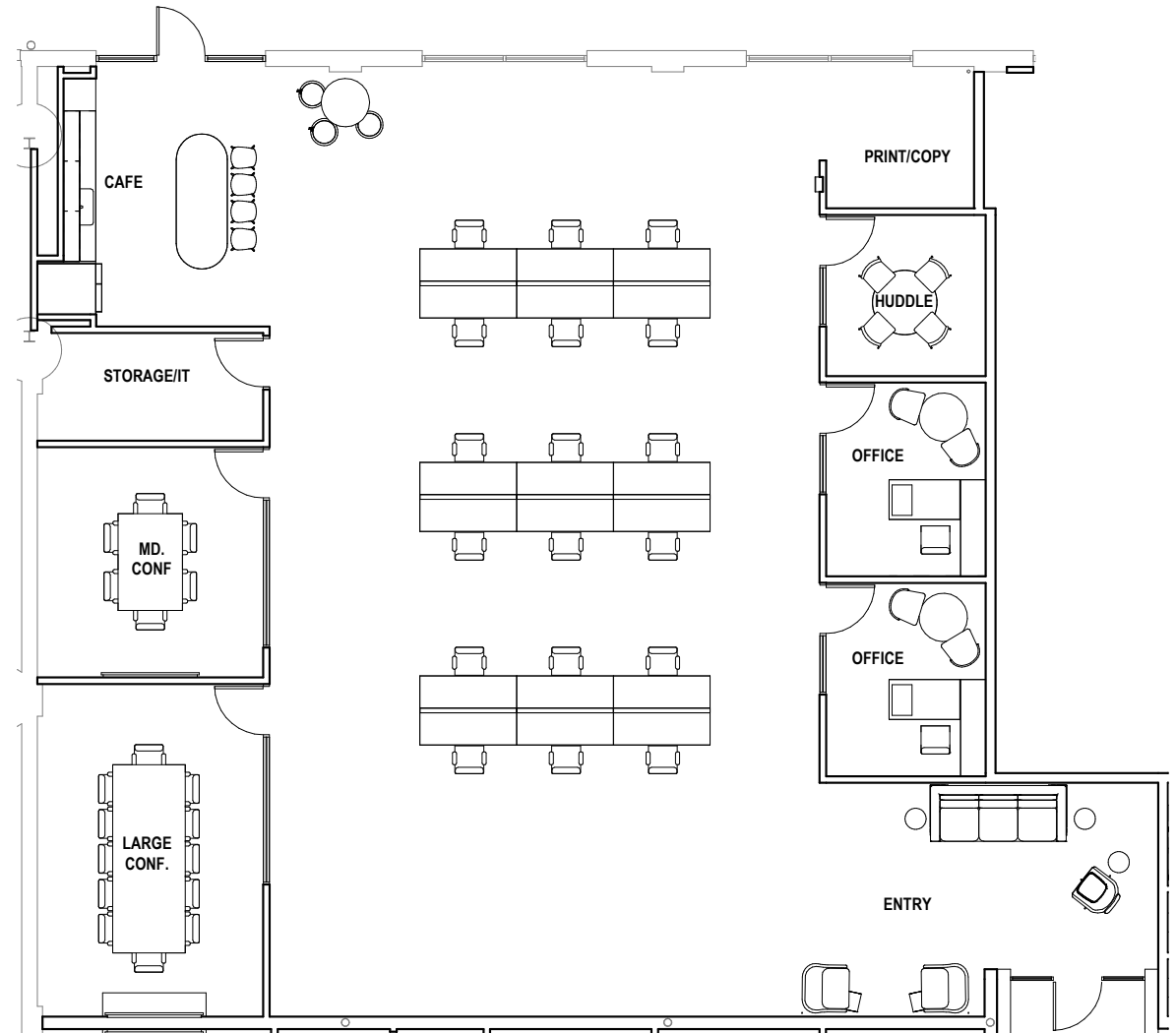
PROGRAM FEATURES

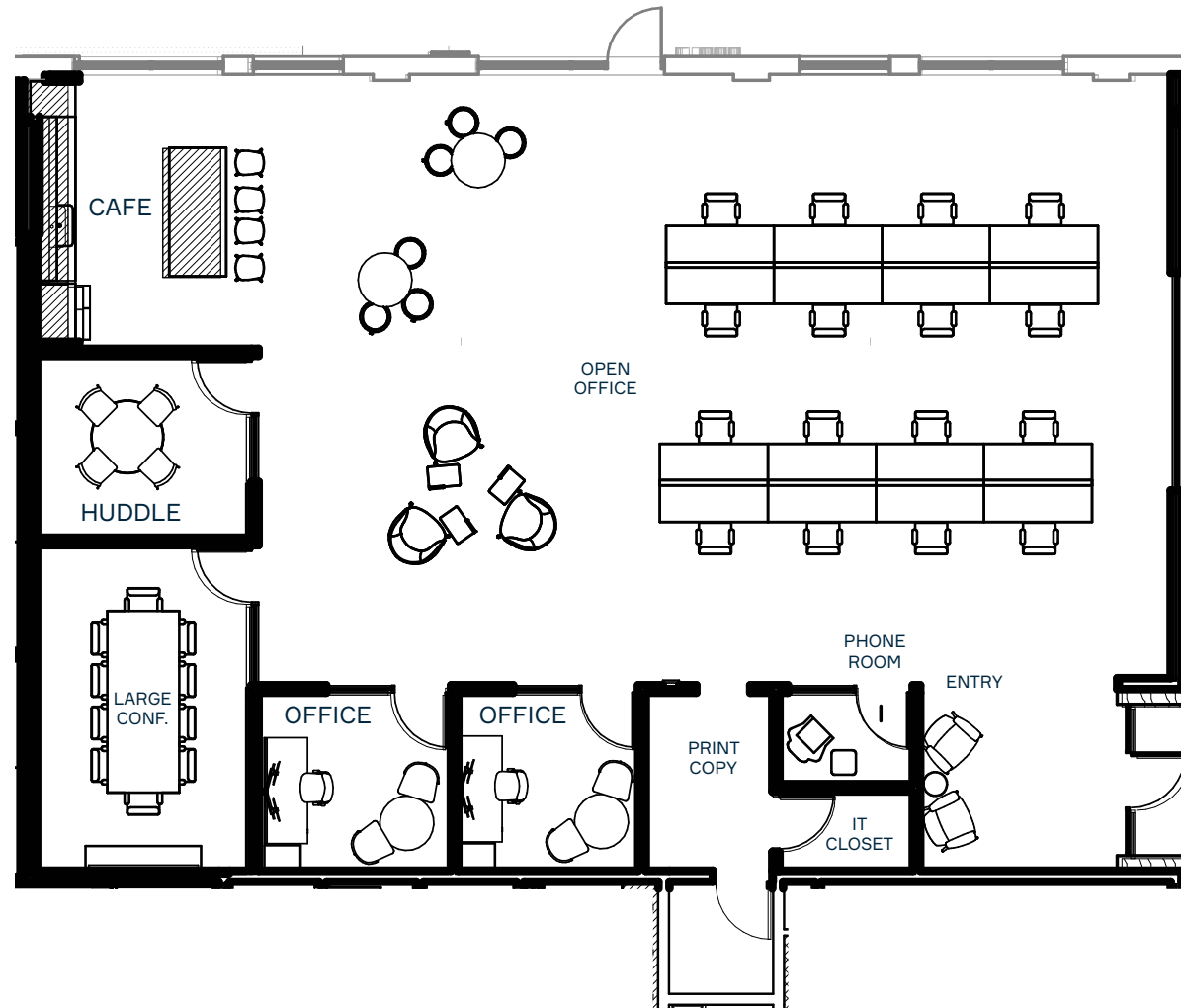
2 PRIVATE OFFICES

1 LARGE CONFERENCE ROOM

1 MEDIUM CONFERENCE ROOM

1 HUDDLE ROOM





VIEW VIRTUAL WALKTHROUGH

Suite 540

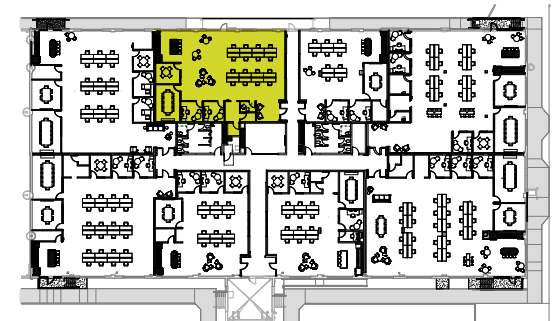
3,403 RSF

PROGRAM FEATURES

2 PRIVATE OFFICES

1 LARGE CONFERENCE ROOM

1 HUDDLE ROOM



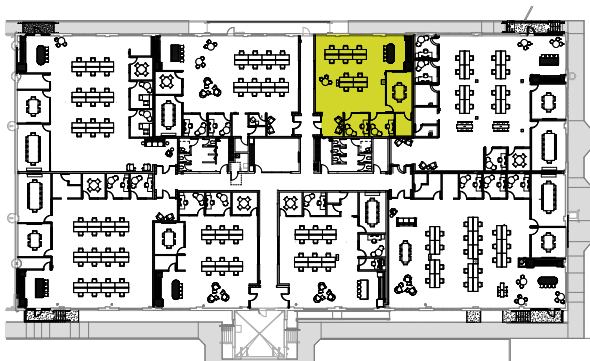
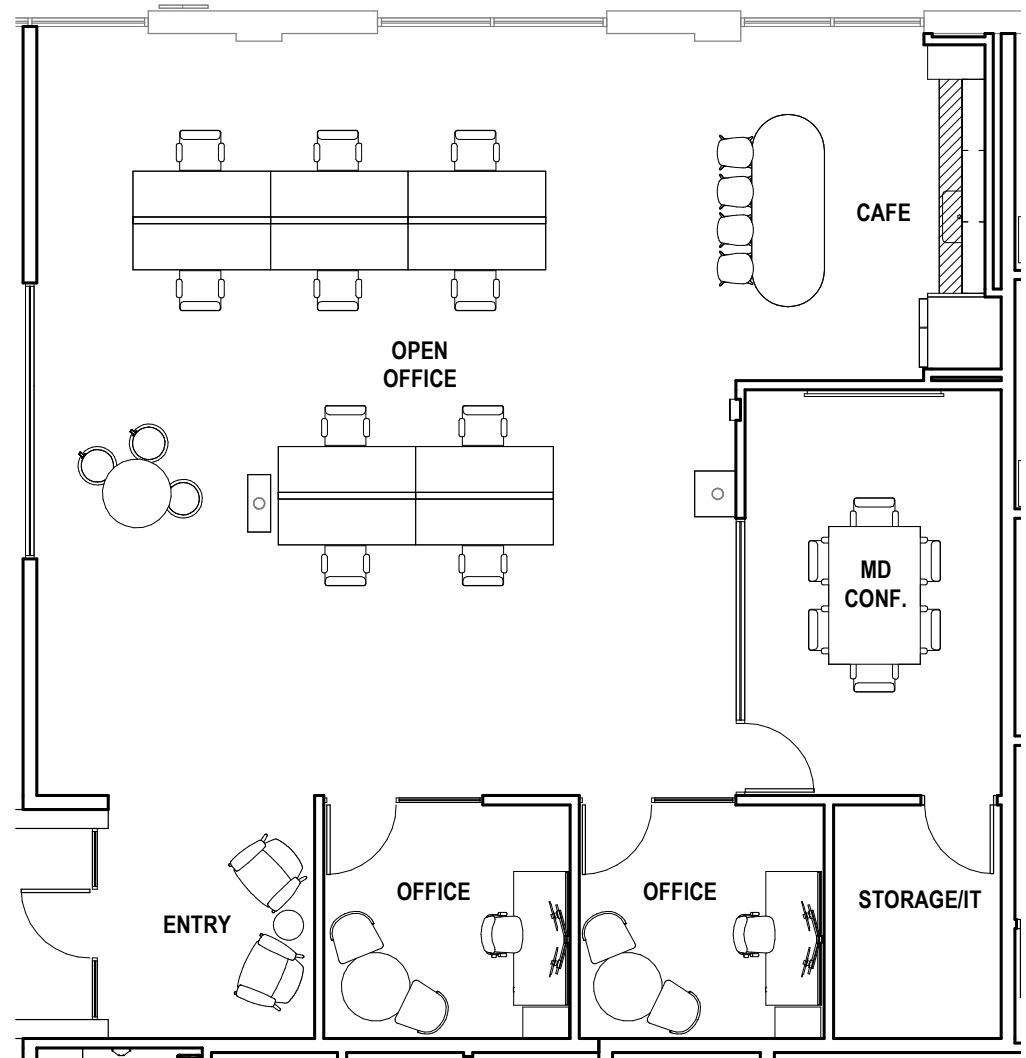
Suite 550

2,251 RSF

PROGRAM FEATURES

2 PRIVATE OFFICE

1 MEDIUM CONFERENCE ROOM



Suite 560

4,916 RSF

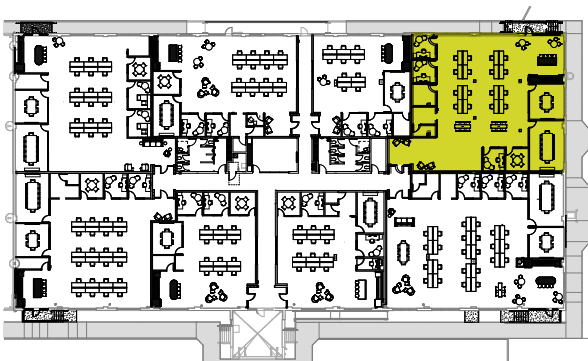
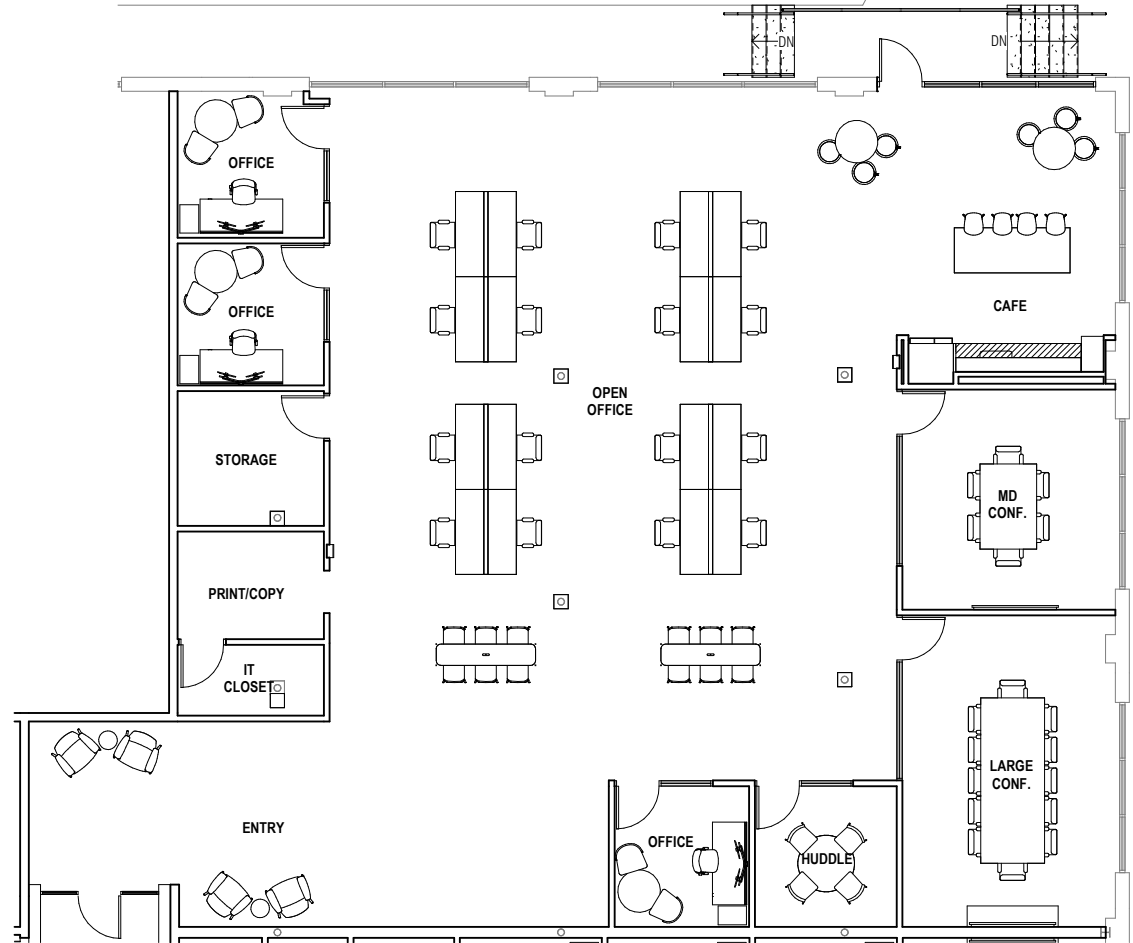
PROGRAM FEATURES

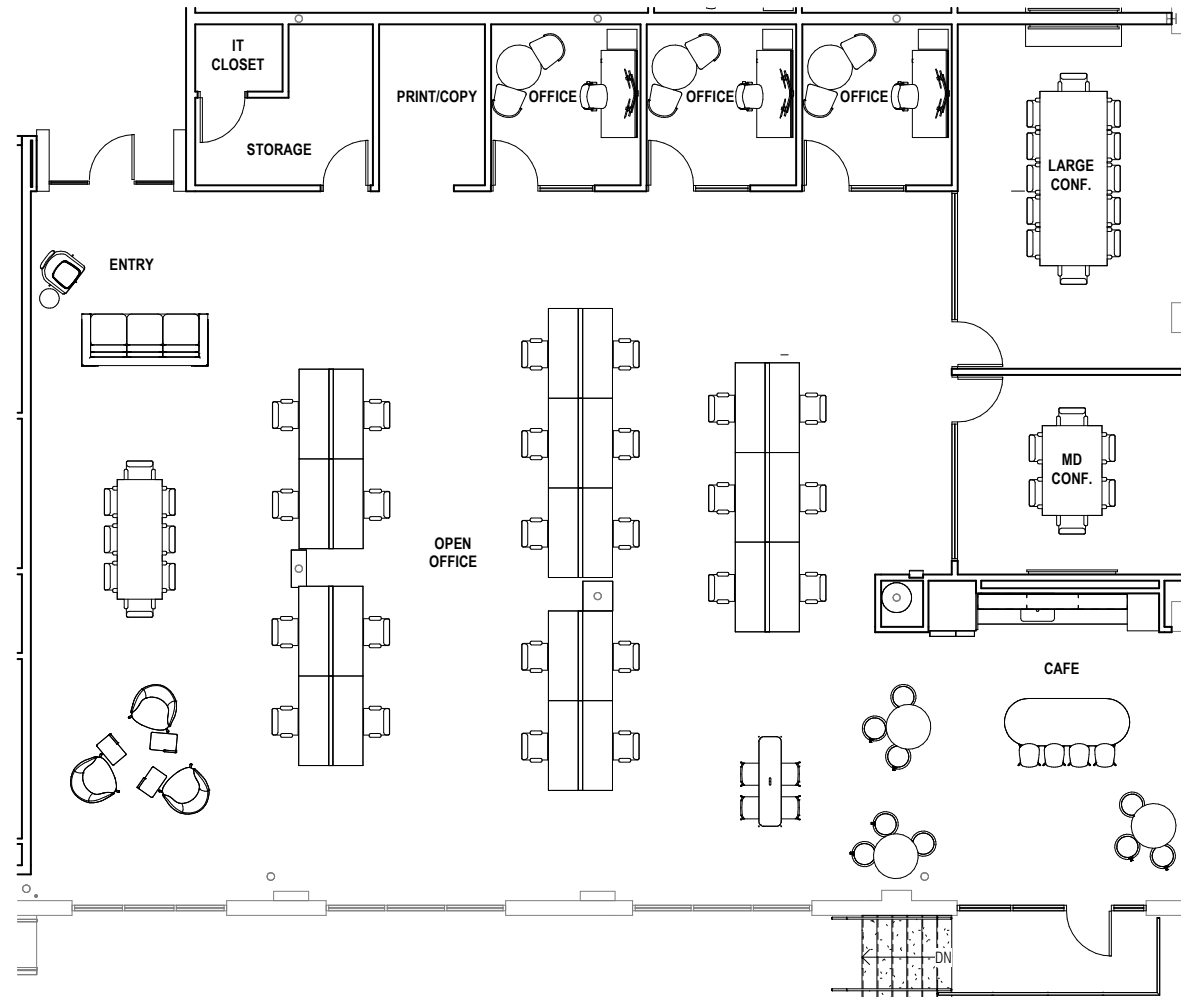
3 PRIVATE OFFICES

1 LARGE CONFERENCE ROOM

1 MEDIUM CONFERENCE ROOM

1 HUDDLE ROOM





VIEW VIRTUAL WALKTHROUGH

Suite 570

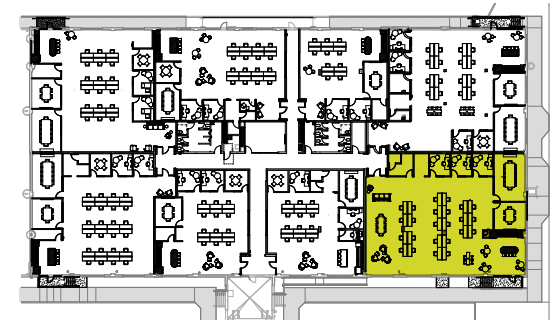
5,369 RSF

PROGRAM FEATURES

3 PRIVATE OFFICES

1 LARGE CONFERENCE ROOM

1 MEDIUM CONFERENCE ROOM



Suite 580

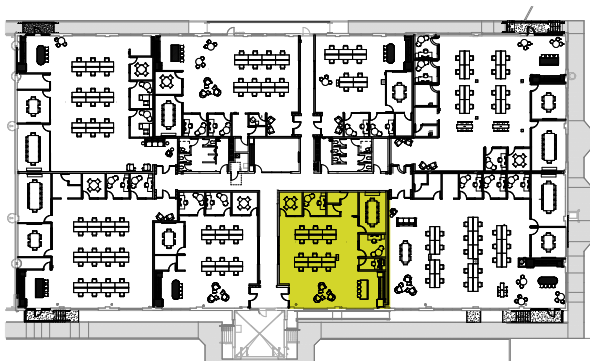
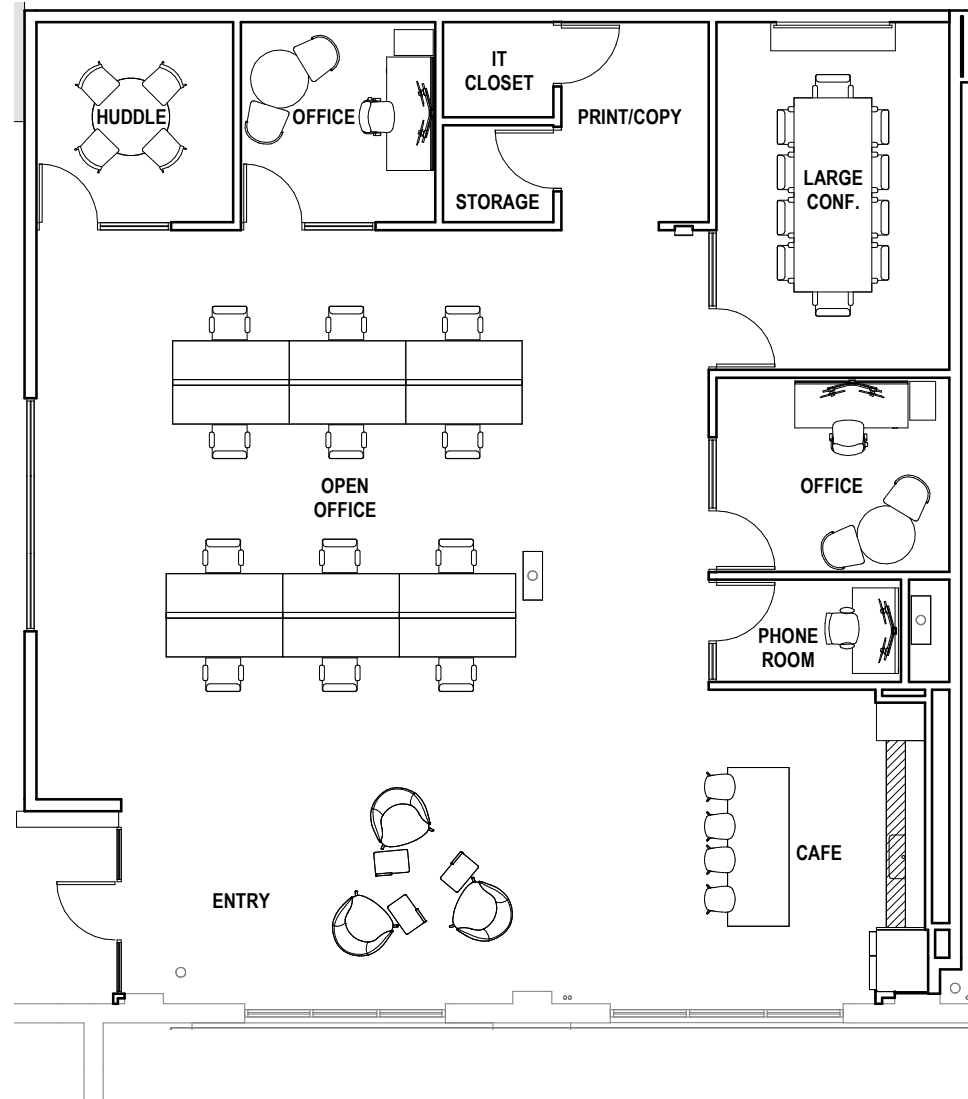
2,874 RSF

PROGRAM FEATURES

2 PRIVATE OFFICES

1 LARGE CONFERENCE ROOM

1 HUDDLE ROOM



LOWER
TUCK

Spec Suites

DESIGN CONCEPT



CABINET FACE
Formica - Graystone



LAMINATE
Polilom - Tuscan



CERAMIC TILE
Tilebor - Angelo Horris



LAMINATE
Nevamor - Woodvine



EXPOSED WOOD
Truss System

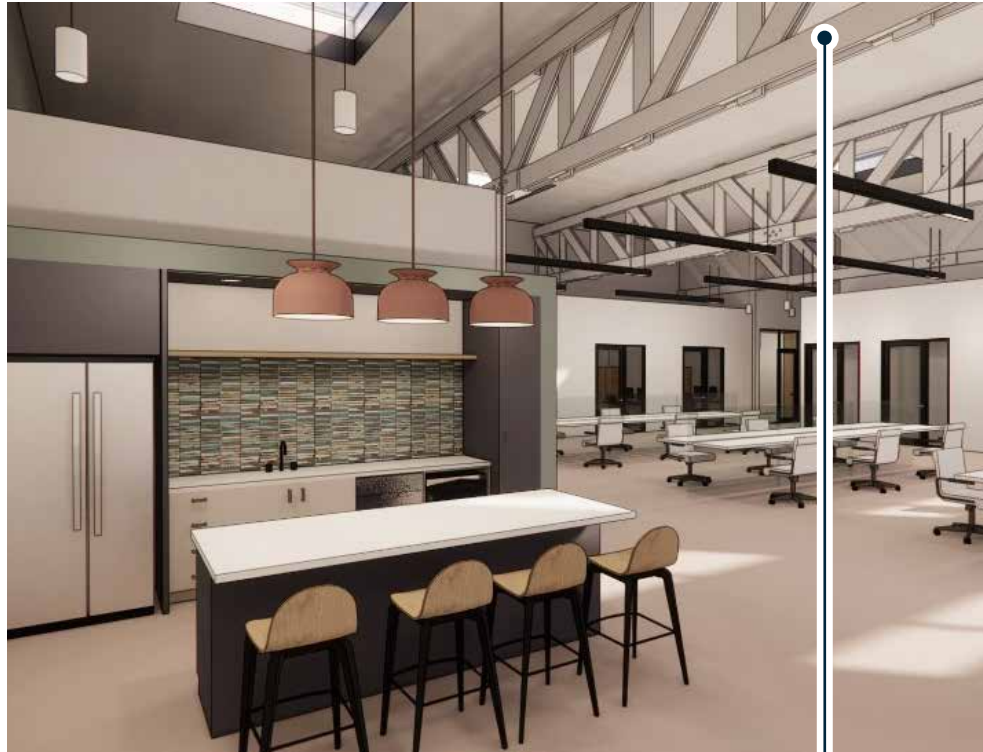


QUARTZ
Hanstone Tofino

LOWER
TUCK

Spec Suites

DESIGN CONCEPT



LAMINATE
Formica - Storm



LAMINATE
Formica - Graystone



SOFFIT PAINT
Rocky River



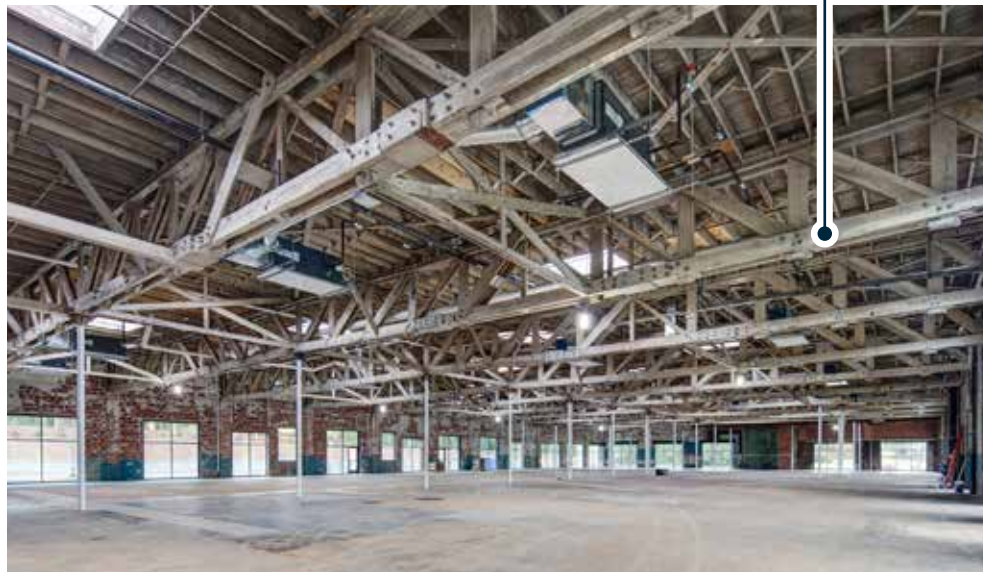
QUARTZ
Hanstone Tofino



LAMINATE
Formica - Camel Elm



BACKSPLASH TILE
Trinity Tile Aphel 25



EXPOSED WOOD
Truss System

REPRESENTATIVE
Spec
Suite
Photos

SUITE 260



SUITE 300 - BREAK ROOM



SUITE 210 - BREAK ROOM



RESTROOMS



SUITE 200 - ENTRANCE