

4810 AVENUE O
FORT MADISON, IOWA 52627

FOR SALE
FOR LEASE
BUILD-TO-SUIT

FARM & HOME
SUPPLY OUTLOTS



PROPERTY DETAILS

- Two Outlots Available For Sale, For Lease or Build--To-Suit
- Farm & Home Supply Opened in 2021
- Pad Sites Ideal For Retail, Coffee, Fast Food, Restaurants, Medical and Office
- Zoned B-2, General Business and Retail
- 1/2 Mile from Southeast Iowa Regional Medical Center
- Fort Madison is the County Seat of Lee County
- Major Employers are Siemens, SEIRMC, ConAgra Foods, Iowa State Penitentiary, Scotts Miracle -Gro, Fort Madison School System and Climax Molybdenum Co

BUY

SELL

LEASE

DEVELOP

MANAGE

CONSULT

CONTACT:



CDM[®]
REAL ESTATE
SERVICES

JESSE CASTON
Partner

📞 319.759.3244

✉ jesse@cdmres.com

Licensed in the State of Iowa

4810 AVENUE O
FORT MADISON, IOWA 52627

FOR SALE
FOR LEASE
BUILD-TO-SUIT



Lot "A" = 0.75 Acres (160' x 204')

- Build-to-Suit or Ground Lease Only
- Build Up to 3,500 SF with Drive Through on Hard Corner
- Located on the SW Corner of Avenue O and 280th Avenue (In Front of Farm & Home Supply) - Hard Corner with Stoplight
- Call For Pricing

Lot "B" = 5.81 Acres West of Farm & Home Supply

- For Sale, Build-to-Suit or Ground Lease
- Easy Access to Hwy 61 and Located on Avenue O, Main Roadway Running East & West Through Fort Madison
- Call For Pricing

CONTACT:

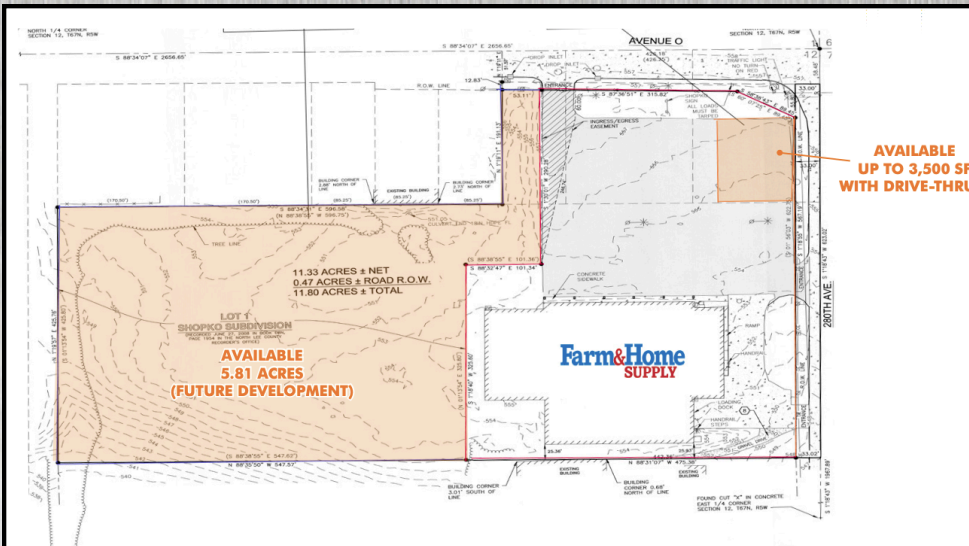
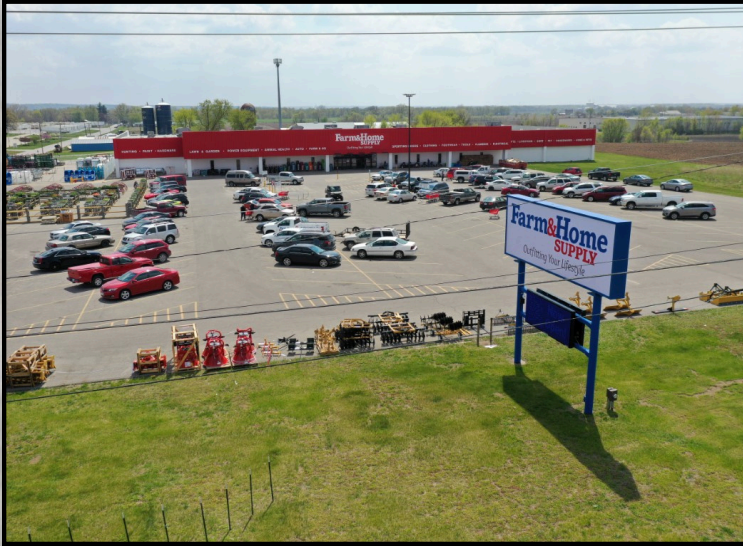


CDM[®]
REAL ESTATE
SERVICES

Licensed in the State of Iowa

4810 AVENUE O
 FORT MADISON, IOWA 52627

FOR SALE
 FOR LEASE
 BUILD-TO-SUIT



CONTACT:



CDM
 REAL ESTATE
 SERVICES

Licensed in the State of Iowa