

AVAILABLE FOR LEASE **261 MOORE ST. NORTHERN BUSHWICK, NY 11206**



AS IS



RENDERING

CONTACT EXCLUSIVE AGENT
EITAN HAKAMI
ASSOCIATE REAL ESTATE BROKER
917.716.7751 (DIRECT)
ehakami@greiner-maltz.com

GREINER-MALTZ
REAL ESTATE
WWW.GREINERMALTZ.COM

24-09 38TH AVENUE
LONG ISLAND CITY, NY 11101
718.786.5050

**AVAILABLE
FOR LEASE**

261 MOORE ST. NORTHERN BUSHWICK, NY 11206

MOORE ST

Former 2nd-generation Michelin star restaurant with front dining area and back kitchen prep area of 4000 SF.

TBD- But there might be a possibility of expanding to 7500 SF . Property features gated glass-door storefront, prep & washing areas, kitchen with hoods, walk in refrigerators, grease traps, and more. Located in the thriving and rapidly emerging creative hub of Northern Bushwick. Around the corner from the L Morgan Station Subway Line. Adjacent to iconic Roberta's Pizzeria, this prime location delivers heavy foot traffic and instant visibility. While and Beverage operations are a natural fit, ownership will consider other creative and destination style concepts.

BUILDING HIGHLIGHTS

Property **4,000 SF**

Entrances

- Double Door Glass Storefront on Moore St.
- Single walk in door on Moore St
- Single walk in door from side alley way
- Double Glass Doors from side alley way
- Double metal Doors from Side alley way

Highlights:

- 3 Hoods
- 3 walk in refrigerators
- 2 Grease Traps
- Floor Drains
- Washing station
- Multiple Sink locations
- Venting roof penetrations
- Ample Power and Gas

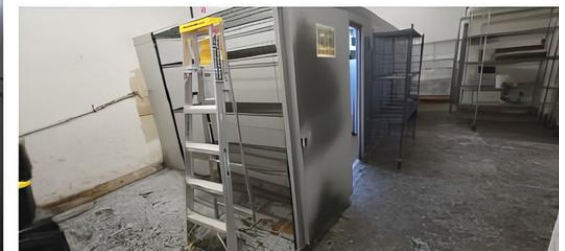
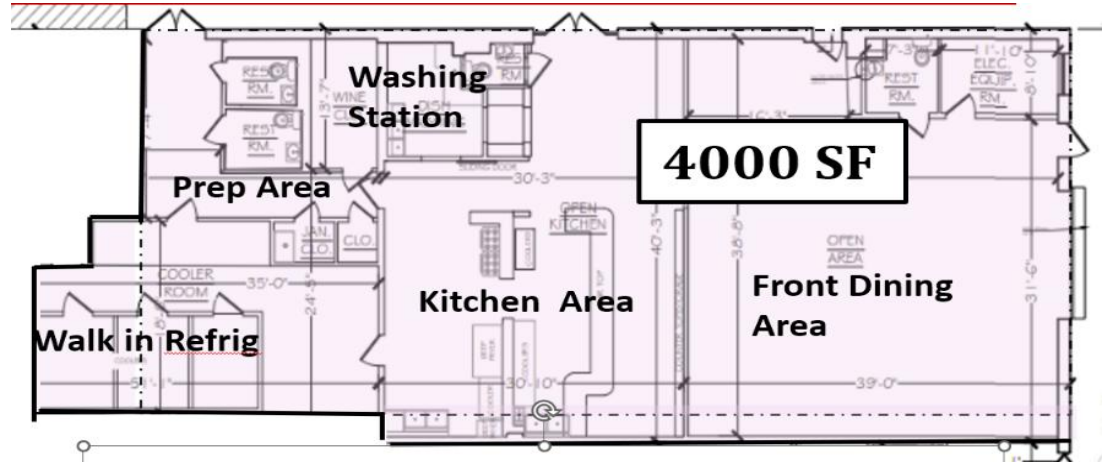
1 ADA Bathroom
2 Standard

Bathrooms
CONTACT
EXCLUSIVE
AGENT

EITAN HAKAMI
ASSOCIATE REAL ESTATE BROKER
917.716.7751 (DIRECT)
ehakami@greiner-maltz.com

GREINER-MALTZ
REAL ESTATE
WWW.GREINERMALTZ.COM

24-09 38TH AVENUE
LONG ISLAND CITY, NY 11101
718.786.5050



AVAILABLE
FOR LEASE

261 MOORE ST. NORTHERN BUSHWICK, NY 11206

ACCESSIBILITY: Commuting is effortless with the Morgan Avenue L- Train Station just a 2 minute walk away, offering a quick 15 minute ride into Manhattan. The location also provides easy access, to major highways making it a strategic hub for both logistics and lifestyle.



The location is exceptional, just around the corner from the L train, surrounded by popular eateries and cafés, and one block from the major film/TV studios underdevelopment on Seigel Street, expected to be completed by 2027.

Reserve this space now and be part of a rapidly emerging creative hub.

CONTACT
EXCLUSIVE
AGENT

EITAN HAKAMI
ASSOCIATE REAL ESTATE BROKER
917.716.7751 (DIRECT)
ehakami@greiner-maltz.com

GREINER-MALTZ
REAL ESTATE
WWW.GREINERMALTZ.COM

24-09 38TH AVENUE
LONG ISLAND CITY, NY 11101
718.786.5050