



## Building for Sale

1200 Route 27

COLONIA, NJ

**Available Space:** 21,420 SF

**Sale Price:** \$6,300,000

**Location:** In close proximity to the Garden State Parkway; 2.4 miles to Metropark

**Features:**

- Building on 2.47 acres of paved land
- Showroom of 5,104 sq ft
- Currently used as a Ford dealership with automobile maintenance
- Seven overhead doors, clear span building with ceiling height to 21'
- 600 amps of power at 208 volts
- Ideal development site,
- Property backs up to Colonia Country Club

Exclusive Broker

**Weichert** Commercial  
| Brokerage, Inc.

**Anthony Baseil**

*Executive Vice President*

*Associate Broker*

201-247-2247 cell

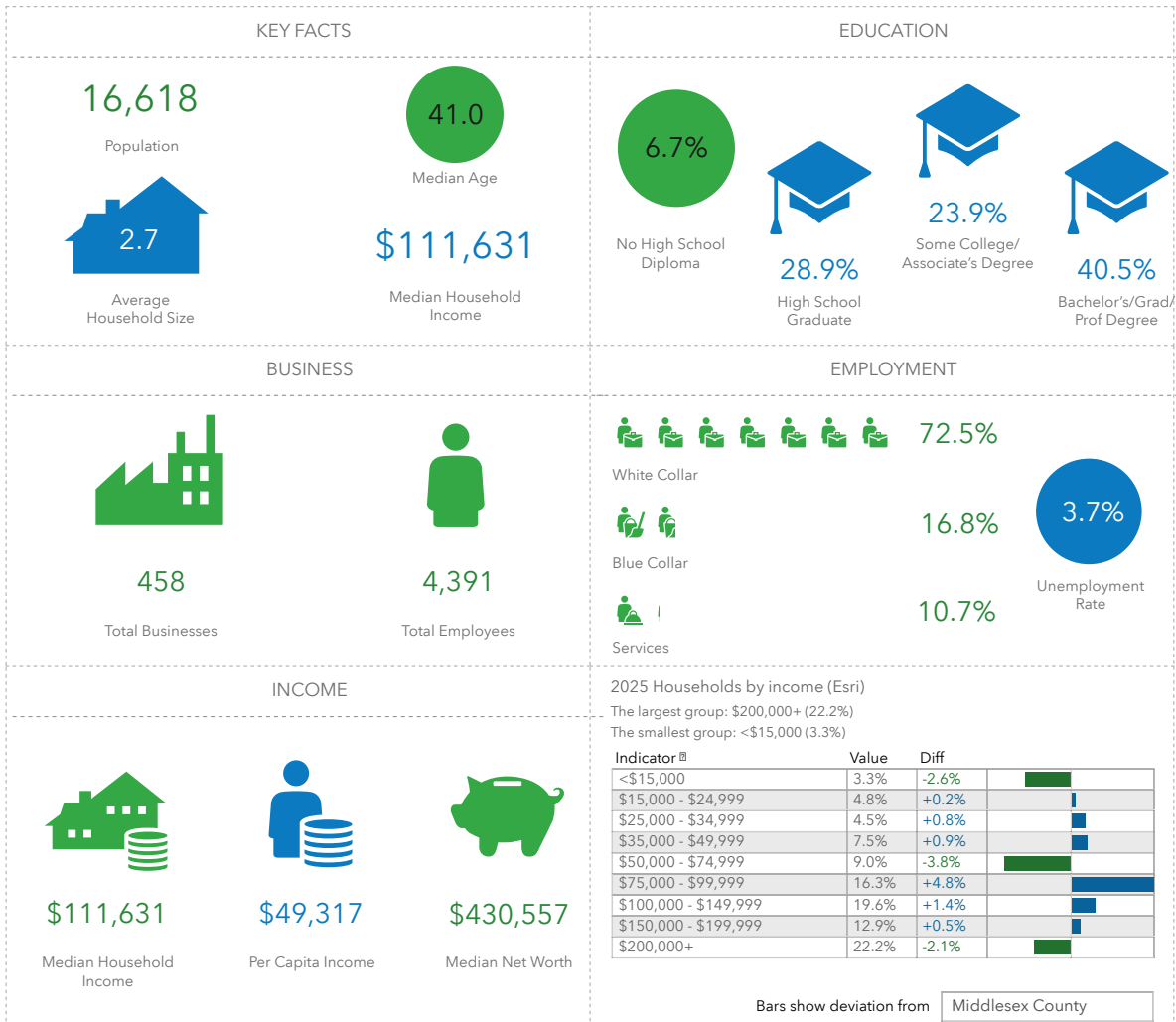
baseil@verizon.net

1625 Route 10 • Morris Plains, NJ • 973-267-7778 • weichertcommercial.com

No warranty or representation, express or implied is made as to the accuracy of the information contained herein, and same is submitted subject to errors, omissions, change of price, rental or other conditions, withdrawal without notice and to any special listing conditions imposed by our principals.

# 1200 Route 27

## Key Facts



**Weichert** Commercial Brokerage, Inc.

1625 Route 10 • Morris Plains, NJ • 973-267-7778 • weichertcommercial.com

No warranty or representation, express or implied is made as to the accuracy of the information contained herein, and same is submitted subject to errors, omissions, change of price, rental or other conditions, withdrawal without notice and to any special listing conditions imposed by our principals.