



## **215 W College Ave**

215 W College Ave, Greenville, IL 62246

### **Jason Crowe**

Blue Heron Designs LLC  
605 CR 1300N, Sullivan, IL 61951  
[Crowejason32@hotmail.com](mailto:Crowejason32@hotmail.com)  
(217) 521-7118

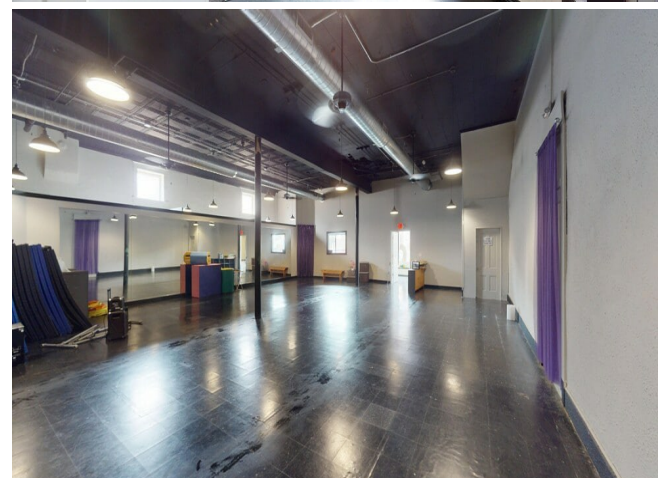


# 215 W College Ave

\$15.00 /SF/YR

Space available in the nostalgic Downtown Square, a few blocks away from Greenville University. The first floor is a wide-open canvas ready to become a gallery, bakery, boutique, co-working hub, or event venue, possibilities are limitless. With reception, office, break room, storage, & 2 ADA bathrooms, the infrastructure is already in place to support your ideas. The property has been updated with modern HVAC, plumbing, electrical, & oversized display windows—designed to highlight your business—while preserving character with tin ceilings & exposed local brick. Frontage signage space will be available for tenant...

- Open floor plan with exposed brick exterior wall
- Location Downtown Square
- Proximity to Greenville University



Rental Rate:	\$15.00 /SF/YR
Property Type:	Retail
Property Subtype:	Storefront Retail/Office
Gross Leasable Area:	3000 SF
Year Built:	1900
Walk Score ®:	57 (Somewhat Walkable)
Rental Rate Mo:	\$1.25 /SF/MO

## 1st Floor

Space Available	3,000 SF
Rental Rate	\$15.00 /SF/YR
Date Available	January 26, 2026
Service Type	[object Object]
Built Out As	Standard Retail
Space Type	New
Space Use	Office/Retail
Lease Term	1 Years

Space available in the nostalgic Downtown Square, a few blocks away from Greenville University. The first floor is a wide-open canvas ready to become a gallery, bakery, boutique, co-working hub, or event venue, possibilities are limitless With reception, office, break room, storage, & 2 ADA bathrooms, the infrastructure is already in place to support your ideas. The property has been updated with modern HVAC, plumbing, electrical, & oversized display windows—designed to highlight your business—while preserving character with tin ceilings & exposed local brick. Frontage signage space will be available for tenant



## 215 W College Ave, Greenville, IL 62246

Space available in the nostalgic Downtown Square, a few blocks away from Greenville University. The first floor is a wide-open canvas ready to become a gallery, bakery, boutique, co-working hub, or event venue, possibilities are limitless. With reception, office, break room, storage, & 2 ADA bathrooms, the infrastructure is already in place to support your ideas. The property has been updated with modern HVAC, plumbing, electrical, & oversized display windows—designed to highlight your business—while preserving character with tin ceilings & exposed local brick. Frontage signage space will be available for tenant.

# Property Photos



Interior Photo



Interior Photo

# Property Photos

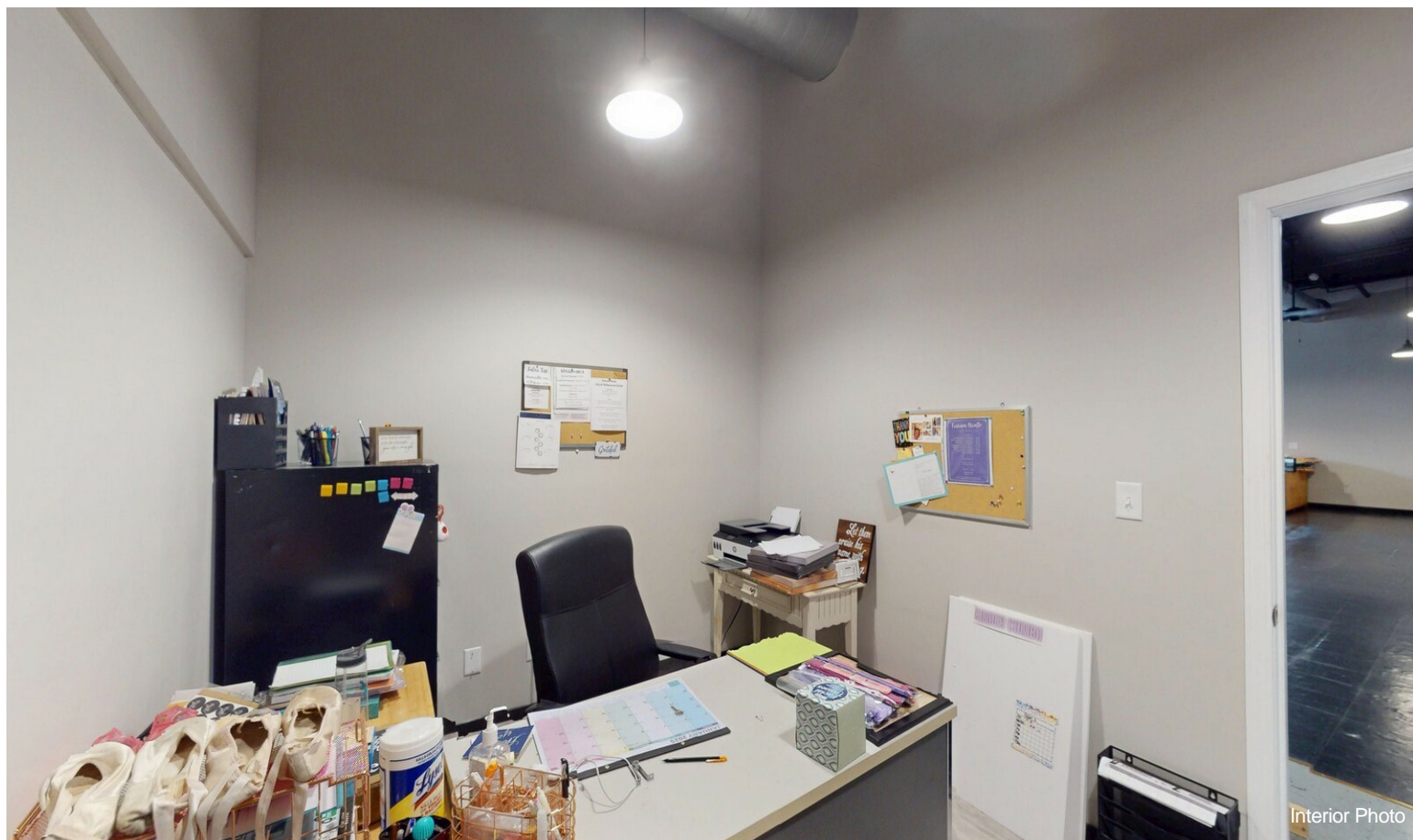


Interior Photo

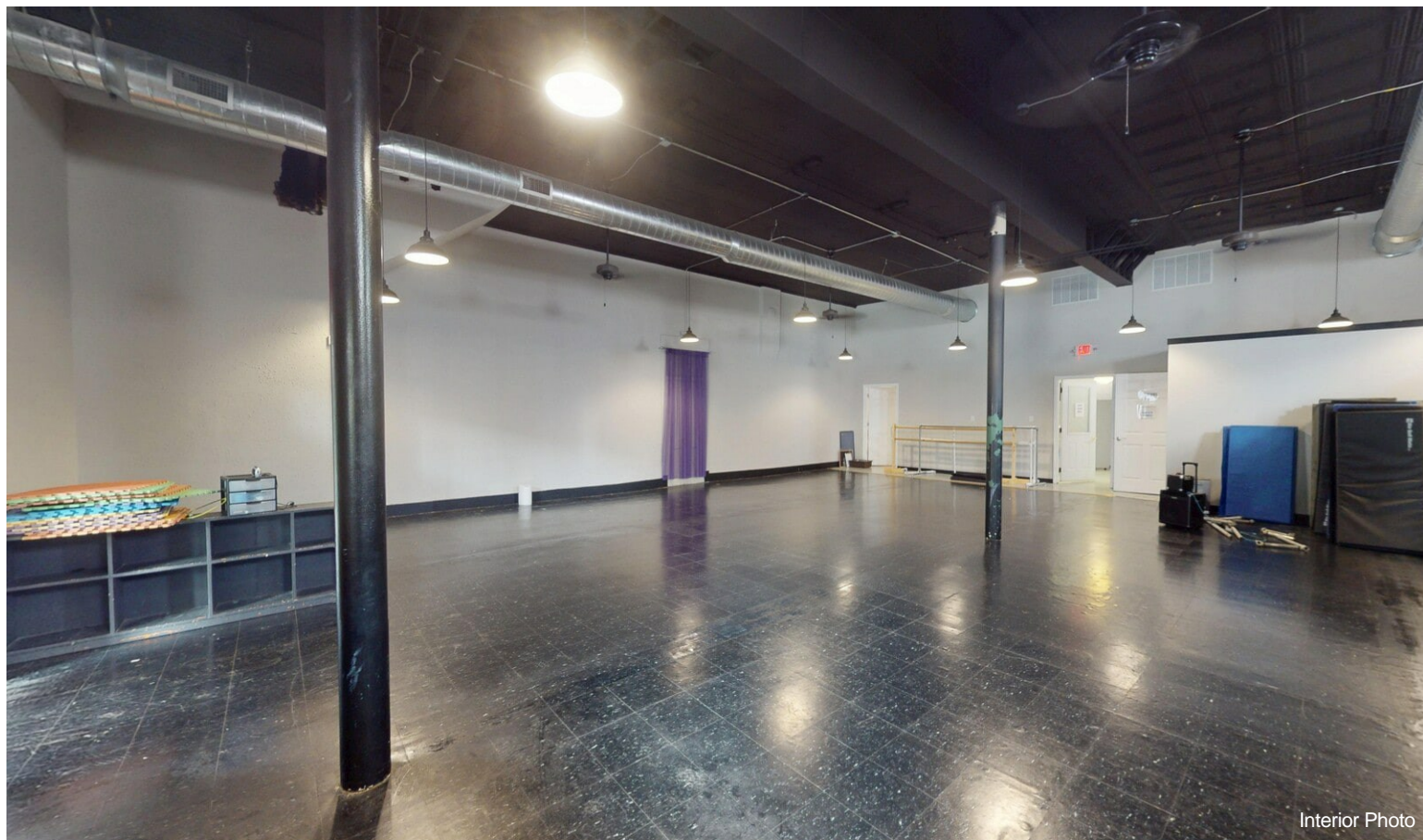


Interior Photo

# Property Photos

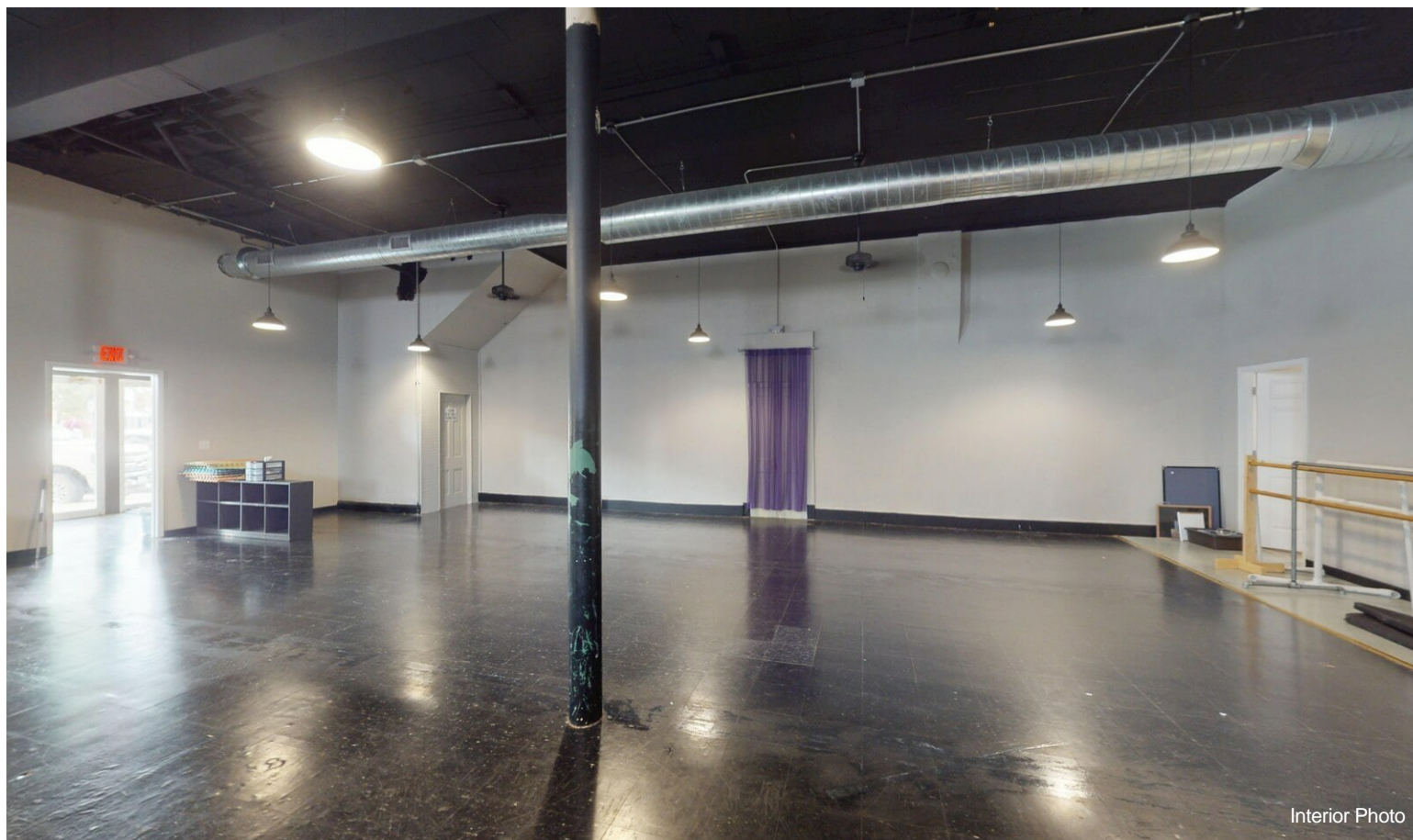


Interior Photo

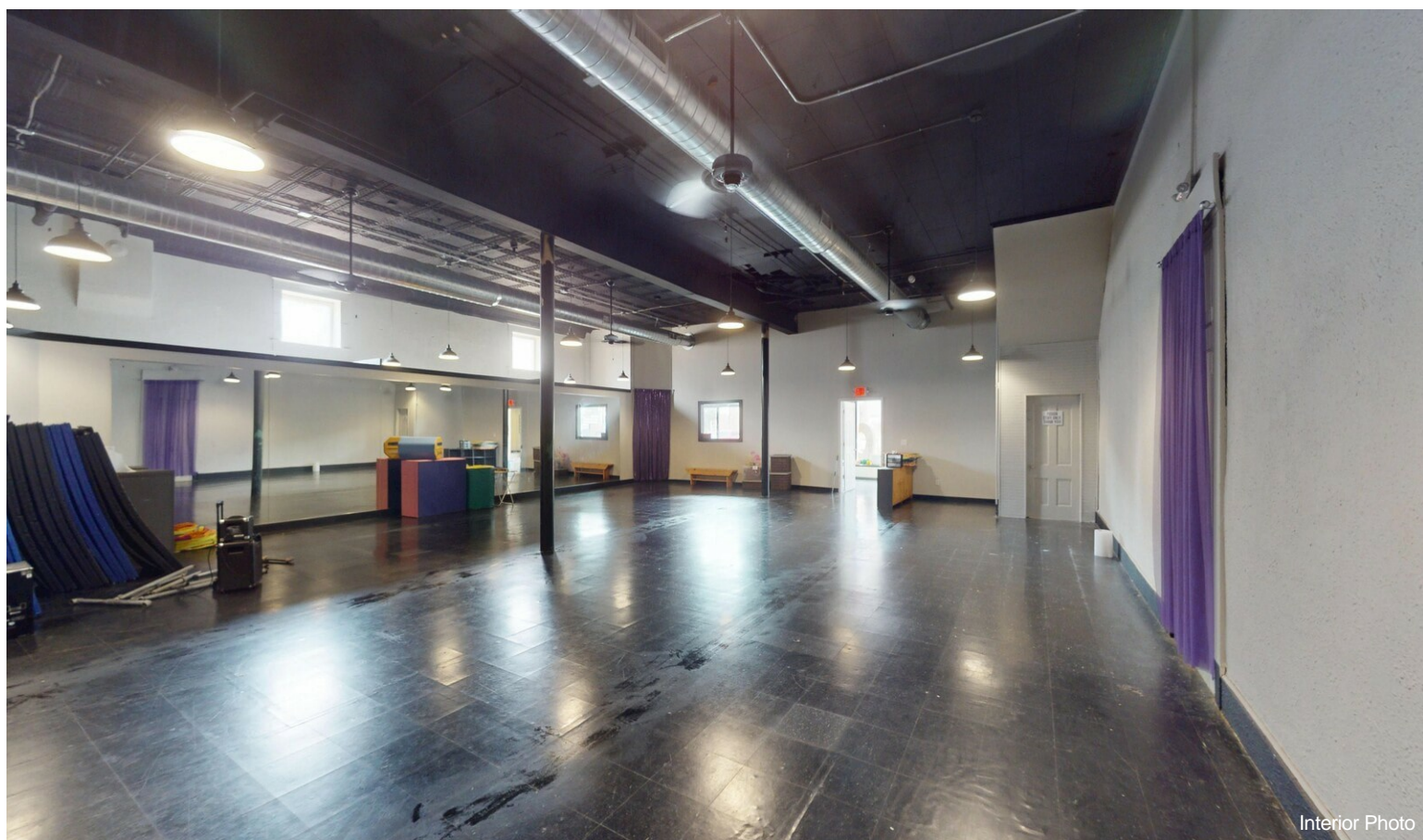


Interior Photo

# Property Photos



Interior Photo



Interior Photo

# Property Photos

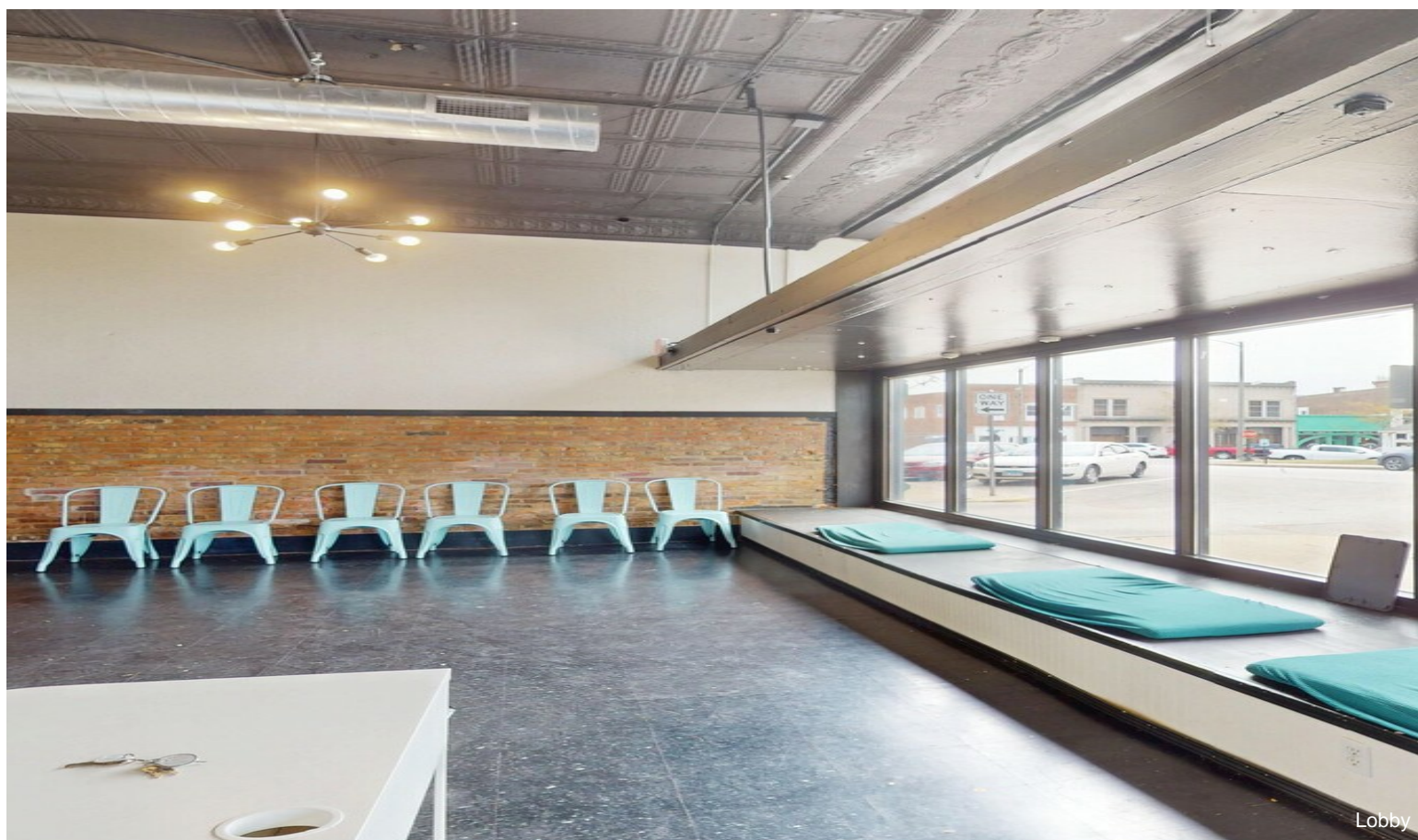
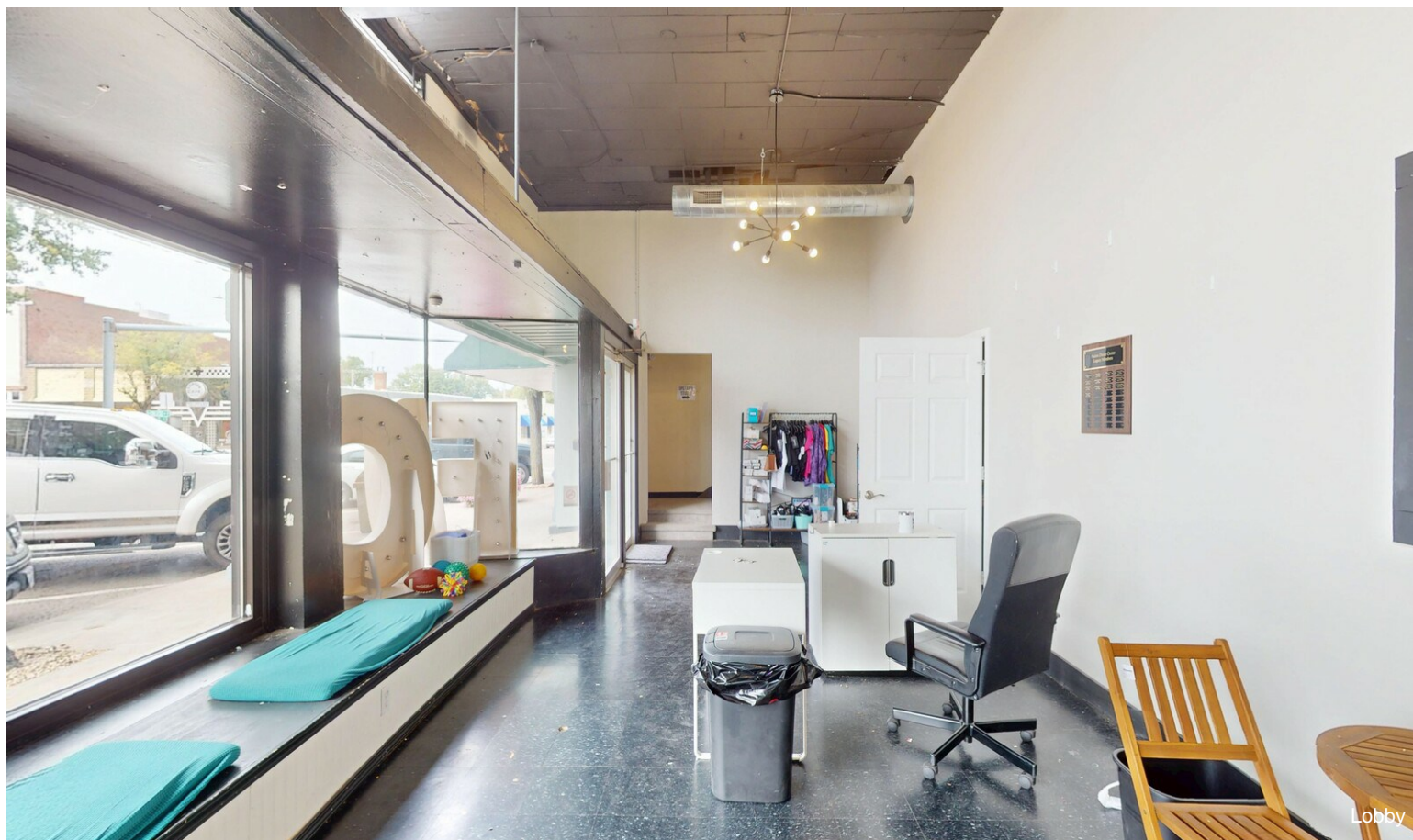


Interior Photo

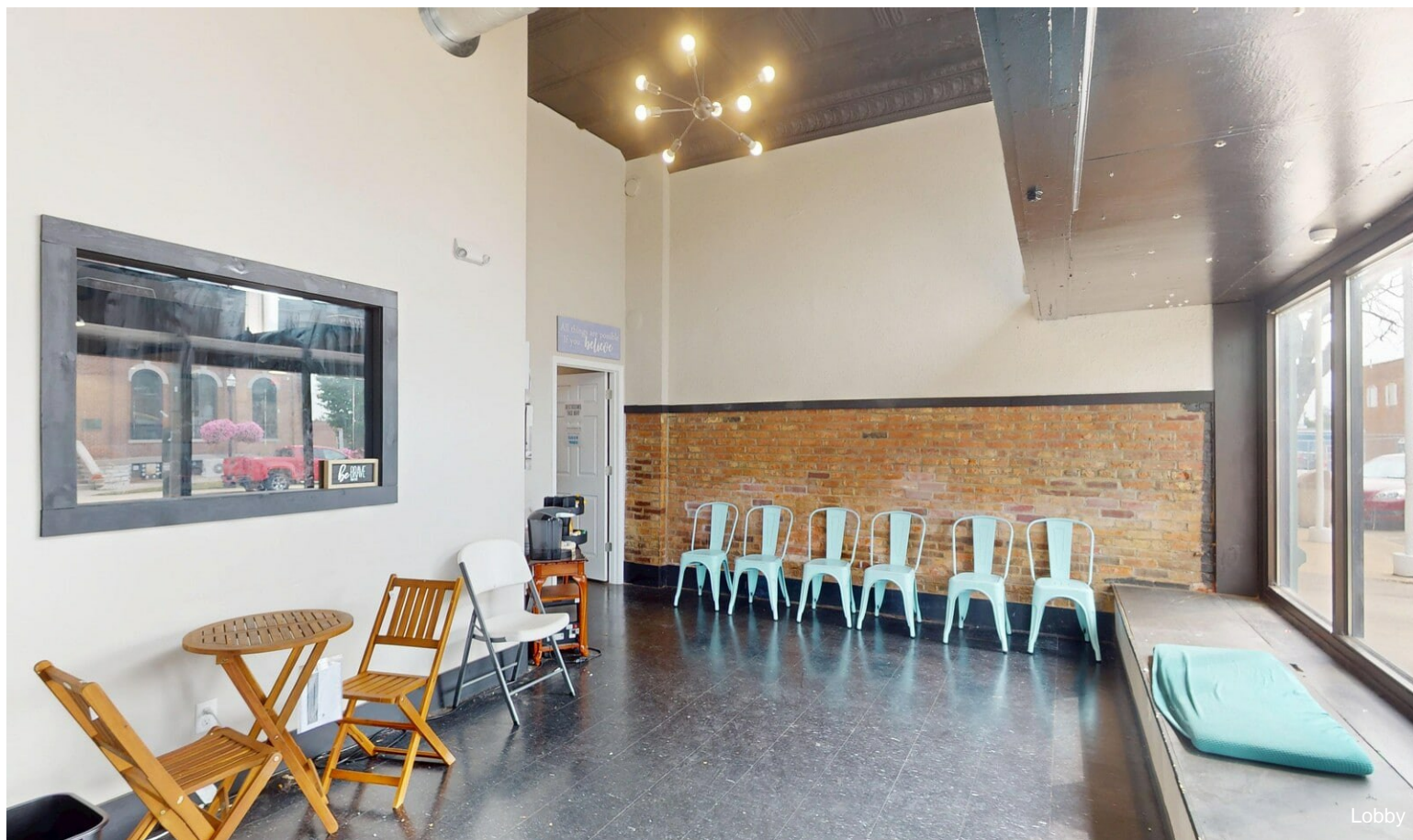


Lobby

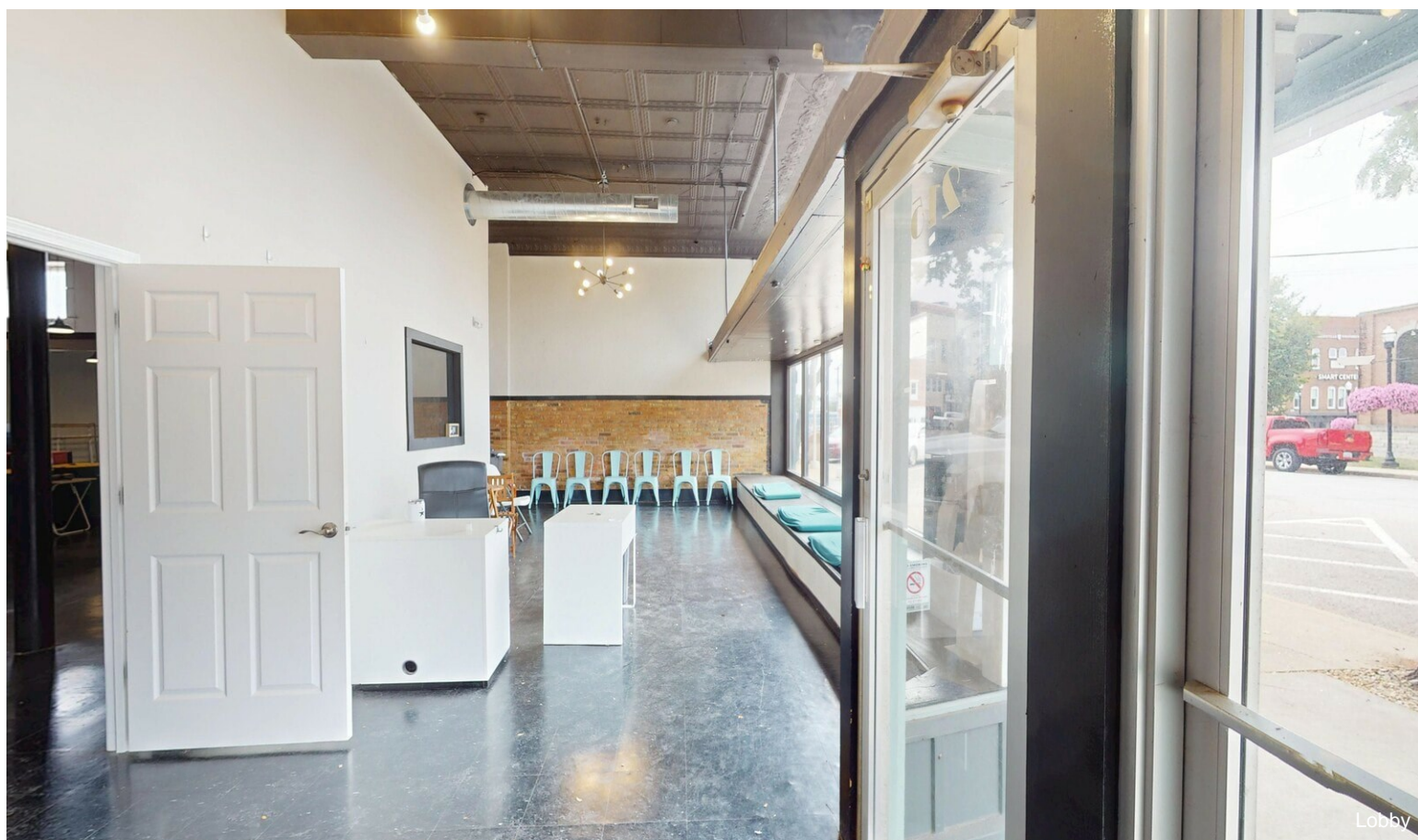
# Property Photos



# Property Photos



Lobby



Lobby

# Property Photos



Building Photo



Building Photo

# Property Photos



Building Photo



Floor Plan