

\$5.95/NNN

Colliers

For Lease
441,300 SF Divisible to
66,300 SF

1954 Halethorpe Farms Rd, Halethorpe, Maryland 21227

Brian Siegel, SIOR
Executive Vice President
+1 410 319 2410
Brian.Siegel@colliers.com

Brian Watts
Executive Vice President
+1 410 319 2408
Brian.Watts@colliers.com

Tom Gentner
Executive Vice President
+1 410 319 2407
Tom.Gentner@colliers.com

Jason Sullivan, SIOR
Executive Vice President
+1 410 319 2409
Jason.Sullivan@colliers.com

Melissa Parrish
Associate Vice President
+1 410 319 2411
Melissa.Parrish@colliers.com

Owned by:



Building Features

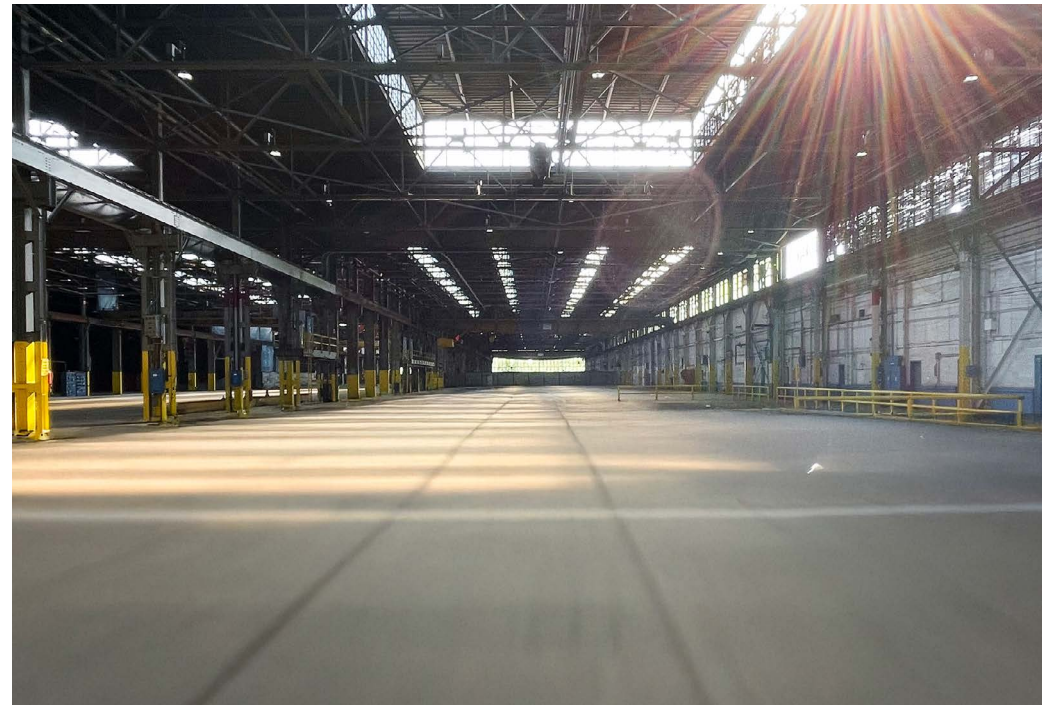
441,300 SF Available

375,000 SF industrial with 7,500 SF office and 1.6 acres IOS
66,300 SF industrial with 1.5 acres of paved, fenced yard

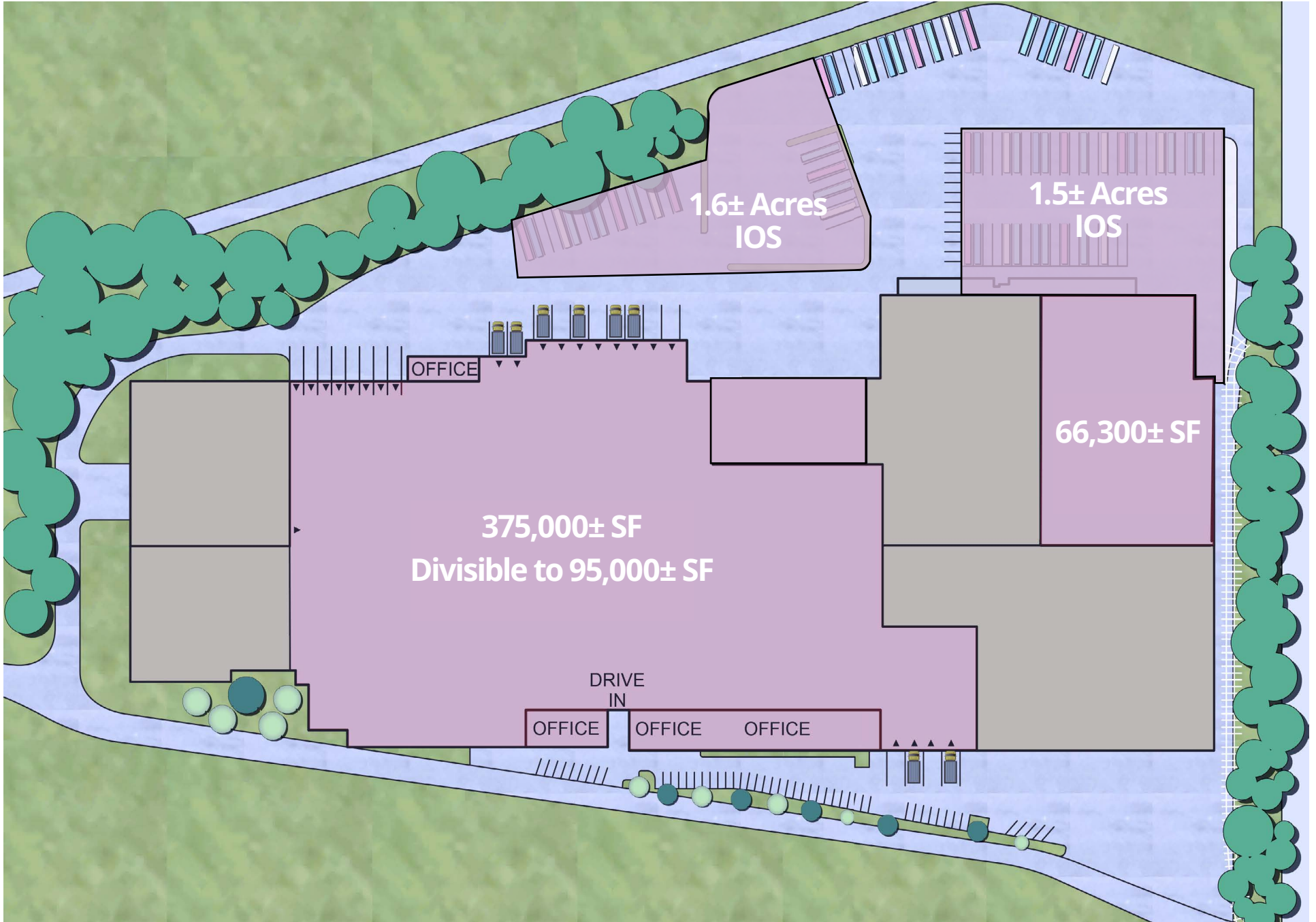
- 15± Loading Dock Positions
- 2± Drive-ins
- 40' x 100' Column Spacing
- 28' - 32' Clear
- Crane-Served
- Multiple 5-25 Ton Cranes
- Heavy Power
- Wet Sprinkler

Property Highlights

- ML-IM Zoning
- Multiple Areas of Outside Storage
- Excellent Access to Major Roads and Highways, including I-95, I-695, I-895 & I-195

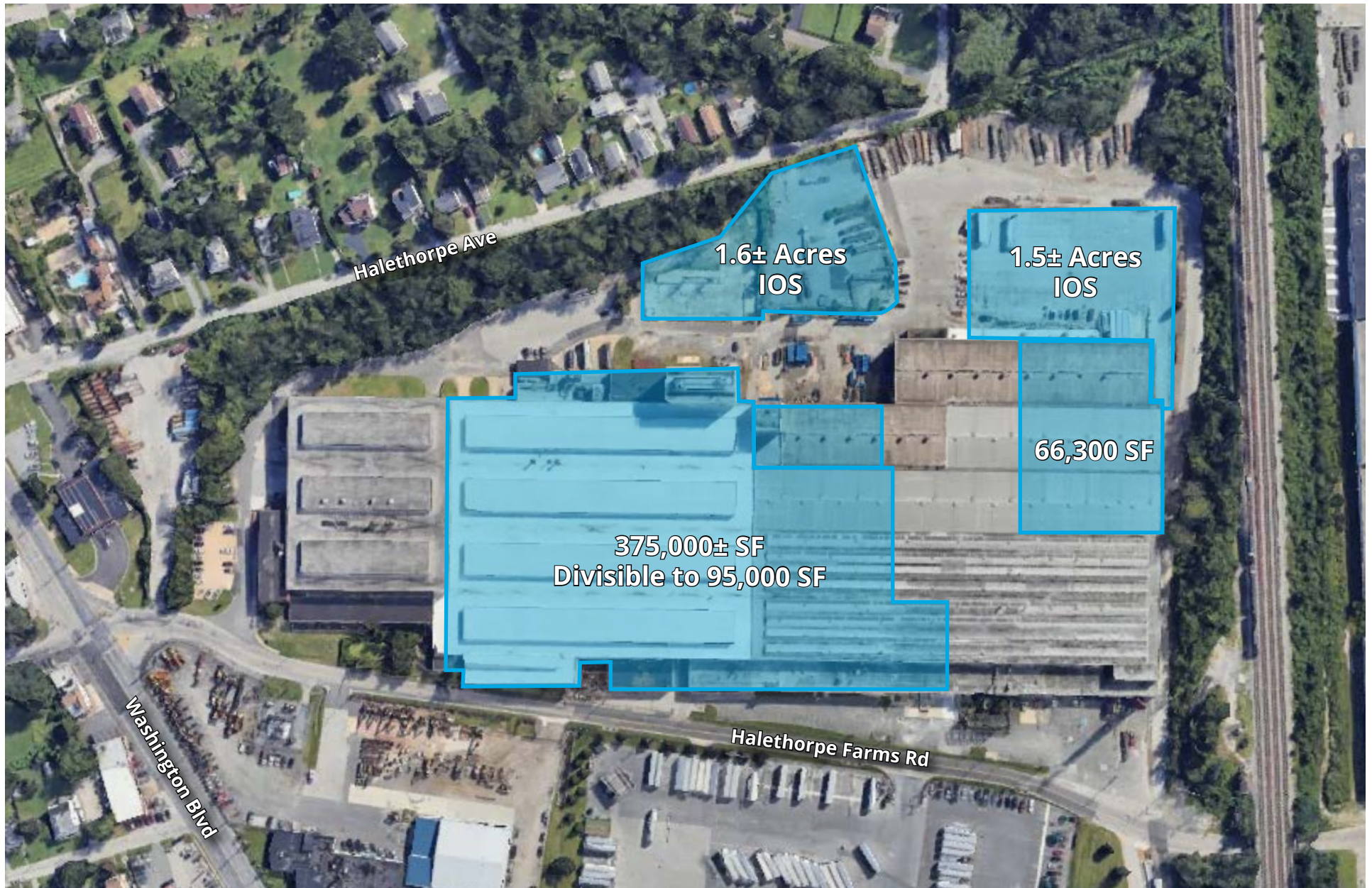


Site Plan Availability



Aerial View

The 360,000 SF suite includes 7,500 sf of Office space, and Dock and Drive-in Loading.
The 66,300 sf space includes 1.5 acres of paved, fenced outdoor yard space.



Property Access

1954 Halethorpe Farms Road is conveniently located along the Baltimore-Washington I-95 corridor just a 12 minute drive to Baltimore Washington International Airport, and 14 minutes to the Port of Baltimore. This optimal location also features a CSX rail spur that directly connects to the building with transloading services offered to tenants.



I-695 1.5 miles

I-95 3 miles



BWI Airport

5 miles



Port of Baltimore

7 miles



Location Distance

Port of Baltimore	7 miles
Washington, DC	35 miles
Port of Virginia	105 miles
Philadelphia, PA	110 miles
New York City, NY	195 miles
Columbus, OH	400 miles
Cincinnati, OH	510 miles
Toronto, CA	560 miles
Atlanta, GA	700 miles
Jacksonville, FL	740 miles

**Approximate distances*





1954 Halethorpe Farms Rd

Owned by:



Contact Us

Brian Siegel, SIOR

Executive Vice President
+1 410 319 2410
Brian.Siegel@colliers.com

Brian Watts

Executive Vice President
+1 410 319 2408
Brian.Watts@colliers.com

Tom Gentner

Executive Vice President
+1 410 319 2407
Tom.Gentner@colliers.com

Jason Sullivan, SIOR

Executive Vice President
+1 410 319 2409
Jason.Sullivan@colliers.com

Melissa Parrish

Associate Vice President
+1 410 319 2411
Melissa.Parrish@colliers.com



7001 Columbia Gateway Dr
Suite 220
Columbia, MD 21046
+1 410 319 2411

This document has been prepared by Colliers for advertising and general information only. Colliers makes no guarantees, representations or warranties of any kind, expressed or implied, regarding the information including, but not limited to, warranties of content, accuracy and reliability. Any interested party should undertake their own inquiries as to the accuracy of the information. Colliers excludes unequivocally all inferred or implied terms, conditions and warranties arising out of this document and excludes all liability for loss and damages arising there from. This publication is the copyrighted property of Colliers and/or its licensor(s). ©2026. All rights reserved.