

**27200**

**TOURNEY ROAD**

**27200**



**CLASS A OFFICE  
BUILDING**

Tourney Pointe

# WHY TOURNEY POINTE

27200 Tourney Road is a 210,040-square-foot creative office project including life science and medical use. Situated adjacent to the prestigious Valencia Country Club golf course, the project has beautiful views as well as numerous on-site amenities including a fitness center, game room, kitchen, conference room, and multiple outdoor sitting areas.

Fully connected internet and phone service lets employees access your company's secure and private network anywhere, including the outdoor courtyard. Your colleagues can take their laptop and work while enjoying a collaborative meeting, coffee break, leisurely lunch, or after work event.



**\$2.95/SF - \$3.05 FSG  
ASKING RATE**



**3/1,000 FREE PARKING**



**EV CHARGING STATION**



**IMMEDIATE ACCESS  
TO THE GOLDEN  
STATE (5) FREEWAY**



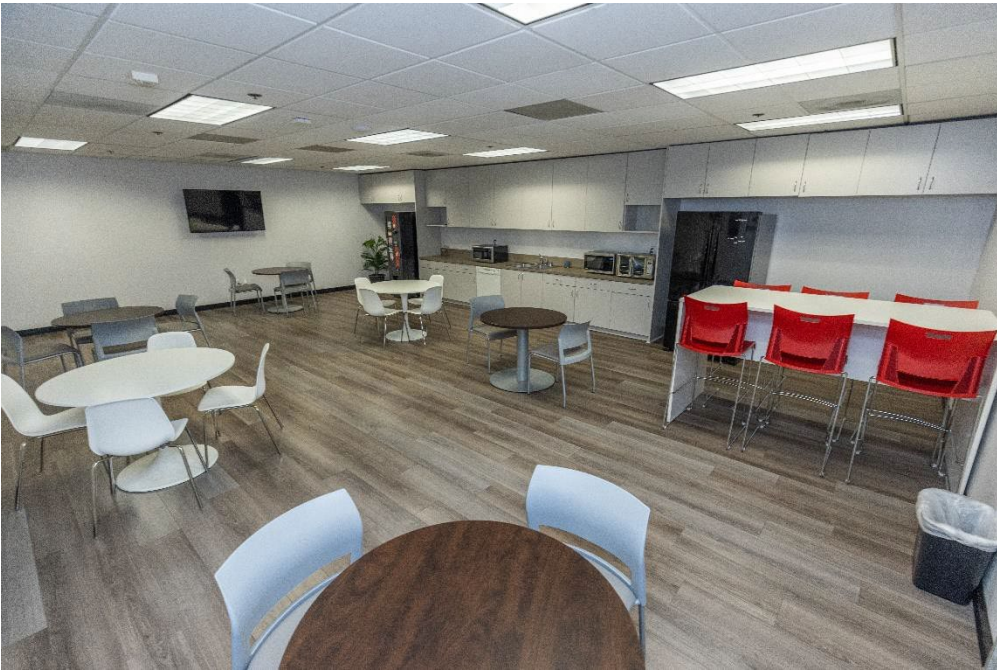
**DOCK-HIGH LOADING  
AREA WITH FREIGHT  
ELEVATOR ACCESS**



**ON-SITE MANAGEMENT,  
ENGINEERING, AND  
SECURITY**



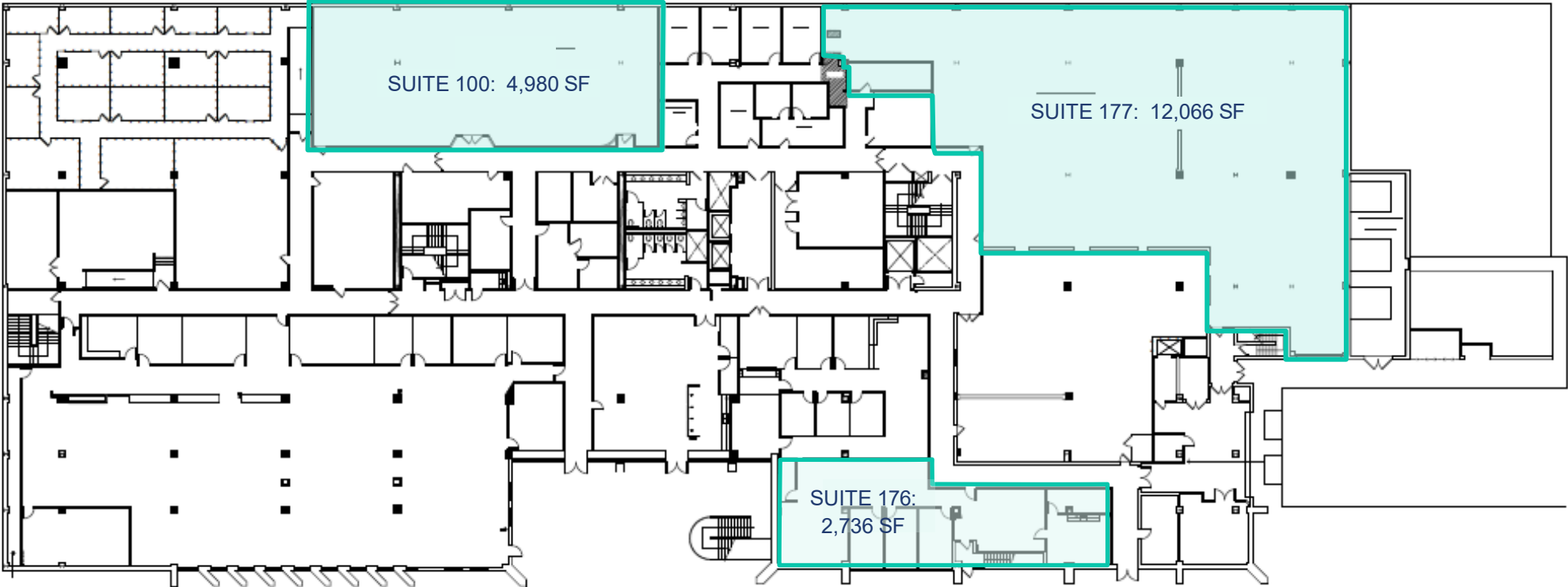
## MAGNETIC LOCATION



FIRST FLOOR

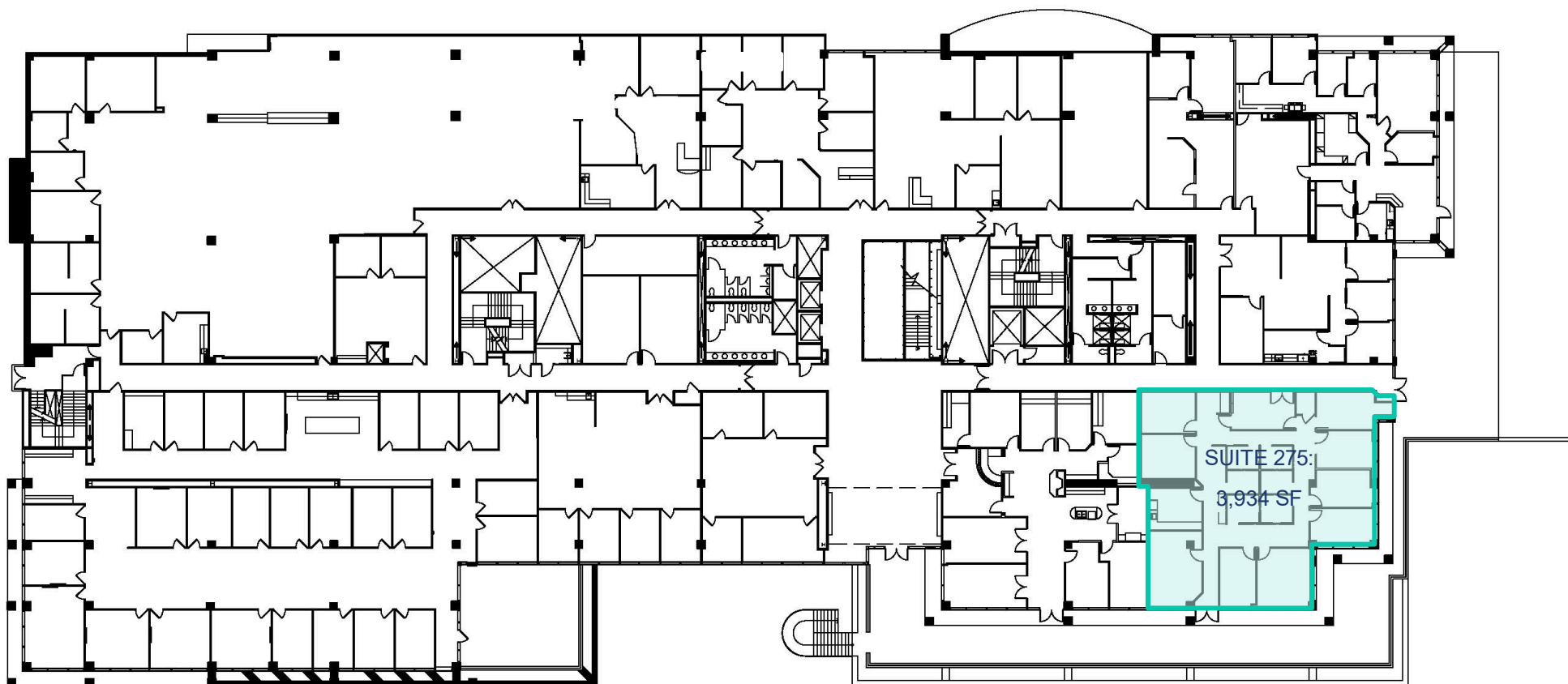
- SUITE 100: 4,980 SF
- SUITE 176: 2,736 SF
- SUITE 177: 12,066 SF

# AVAILABLE SPACE



- SUITE 275: 3,934 SF

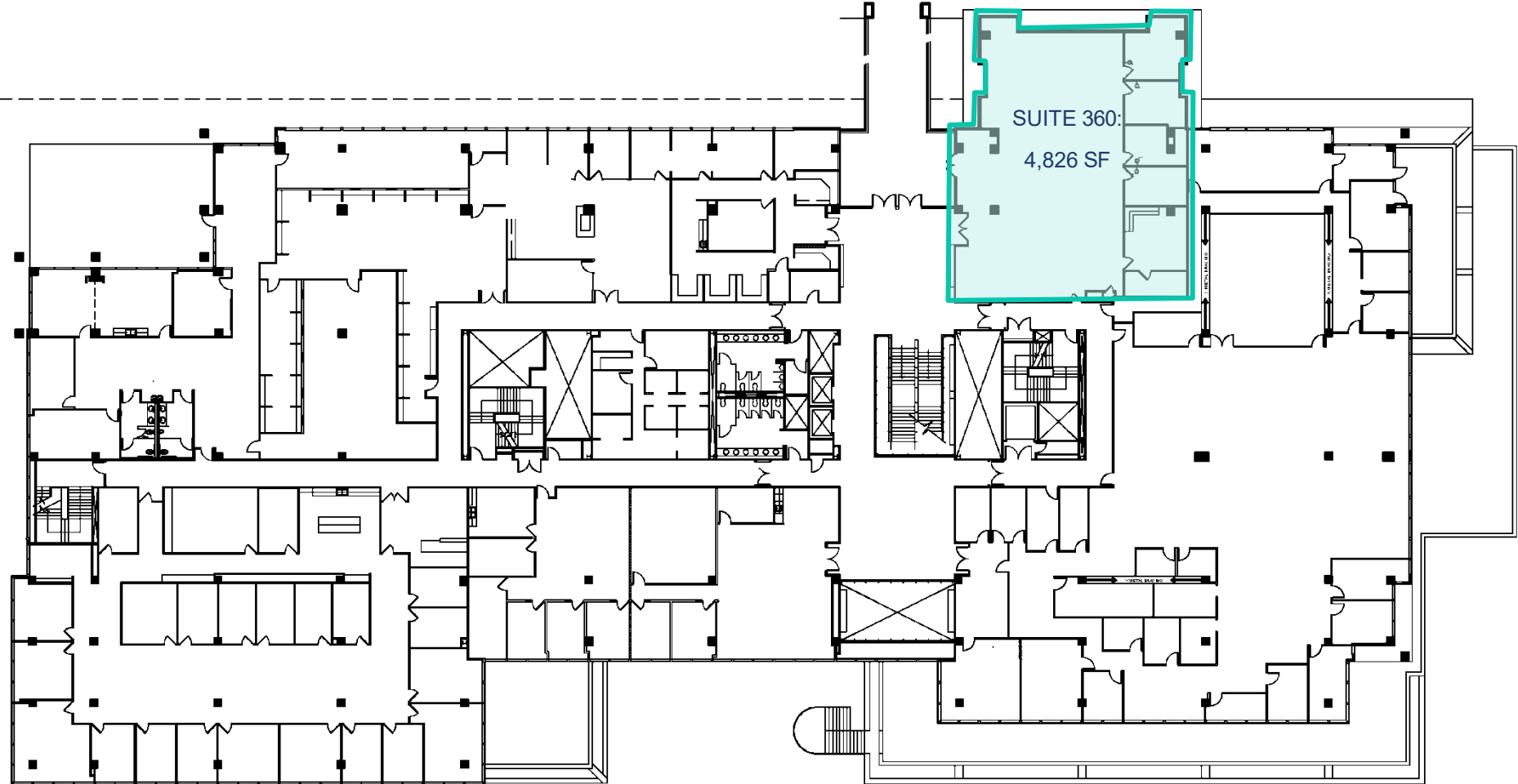
# AVAILABLE SPACE



THIRD FLOOR

- SUITE 360: 4,826 SF

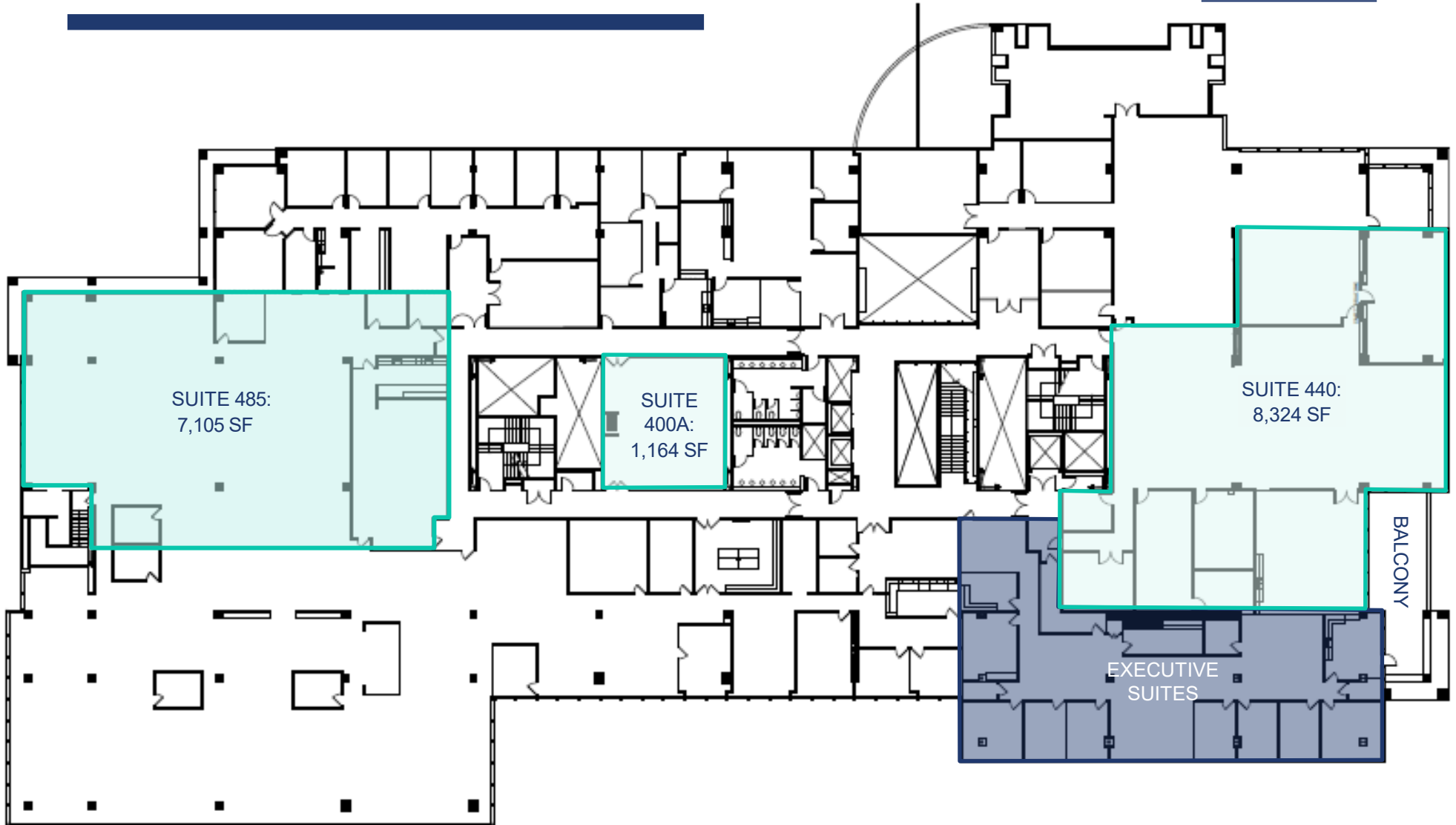
# AVAILABLE SPACE



# AVAILABLE SPACE

## FOURTH FLOOR

- SUITE 485: 7,105 SF
- SUITE 400A: 1,164 SF
- SUITE 440: 8,324 SF
- Executive Suites





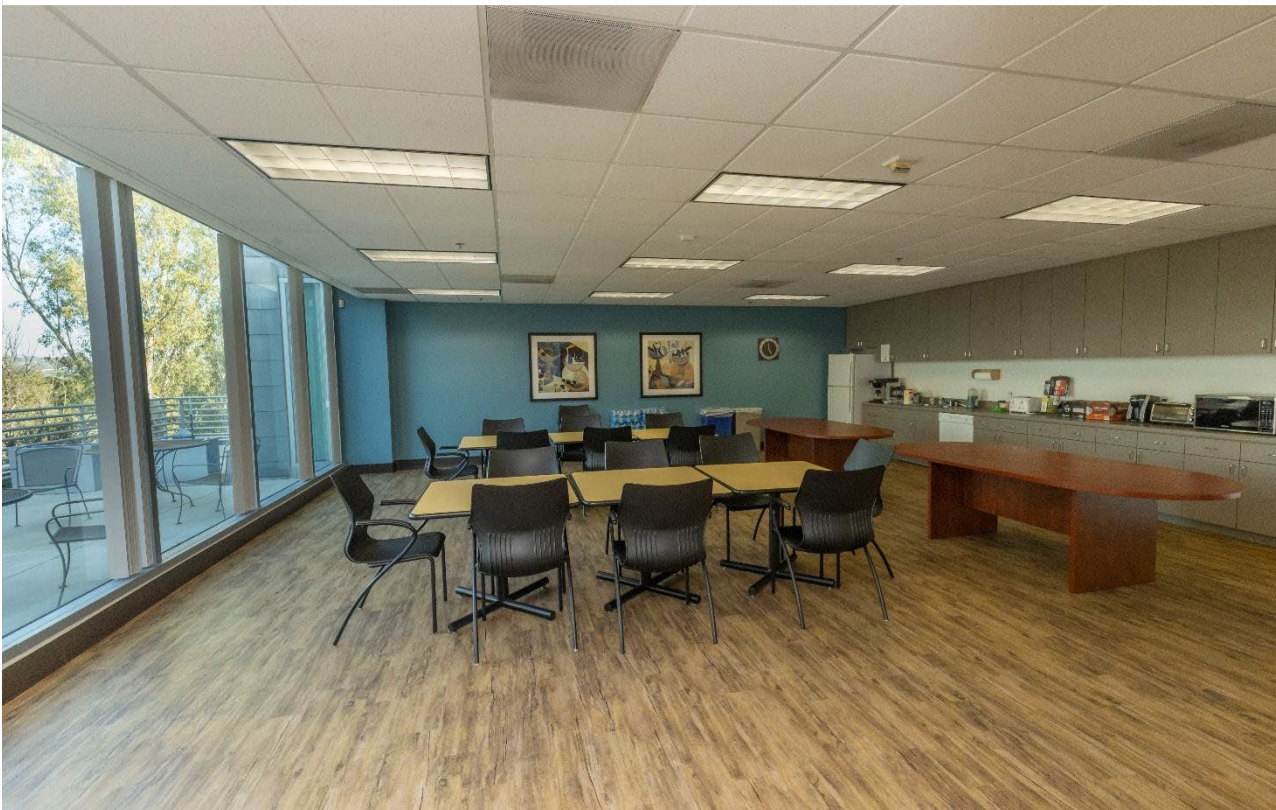
27200

**AN ALL  
ENCOMPASSING  
ENVIRONMENT  
THAT FOSTERS  
CONNECTION**

**COME HERE  
TO WORK  
AND GROW**



**SPACE  
THAT'S  
FLEXIBLE**



**ANY WAY  
YOU  
SLICE IT**

# LEASING TEAM

---

## **JIM LINDVALL**

(818) 531-9678

[jim.lindvall@jll.com](mailto:jim.lindvall@jll.com)

License #01012372

## **CHLOE SANCHEZ**

(747) 234-3553

[chloe.sanchez@jll.com](mailto:chloe.sanchez@jll.com)

License #02109571

