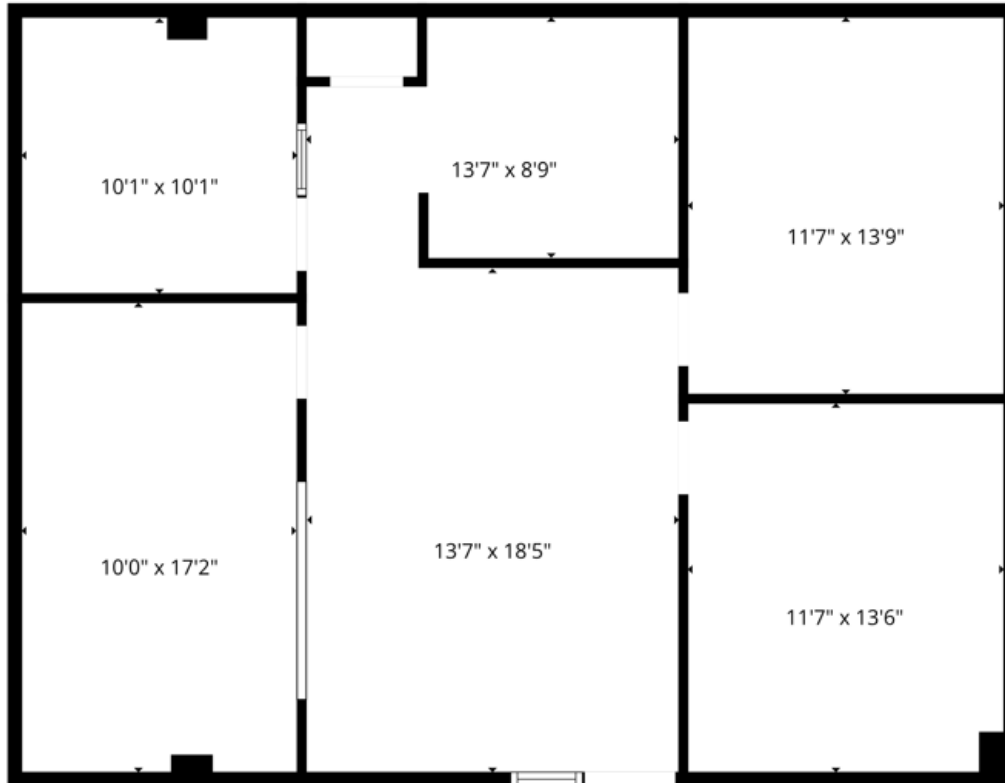


SUITE 380 | 1,236 SF

47 E Chicago Ave \ Naperville, IL



SPACE NOTES

- 4 Rooms Providing Collaborative Work Opportunity
- Large Open Work Area
- Plenty of Storage



RYAN MOEN, SIOR
PRINCIPAL
DESIGNATED MANAGING BROKER
630.480.6346
RMoen@VersaRES.com

ANGELA WING
ASSOCIATE
630.725.8939
AWing@VersaRES.com

1 MID AMERICA PLAZA, 3RD FLOOR
OAKBROOK TERRACE, IL 60181
630.480.6413

EXCLUSIVELY LISTED BY
VERSA
REAL ESTATE SERVICES