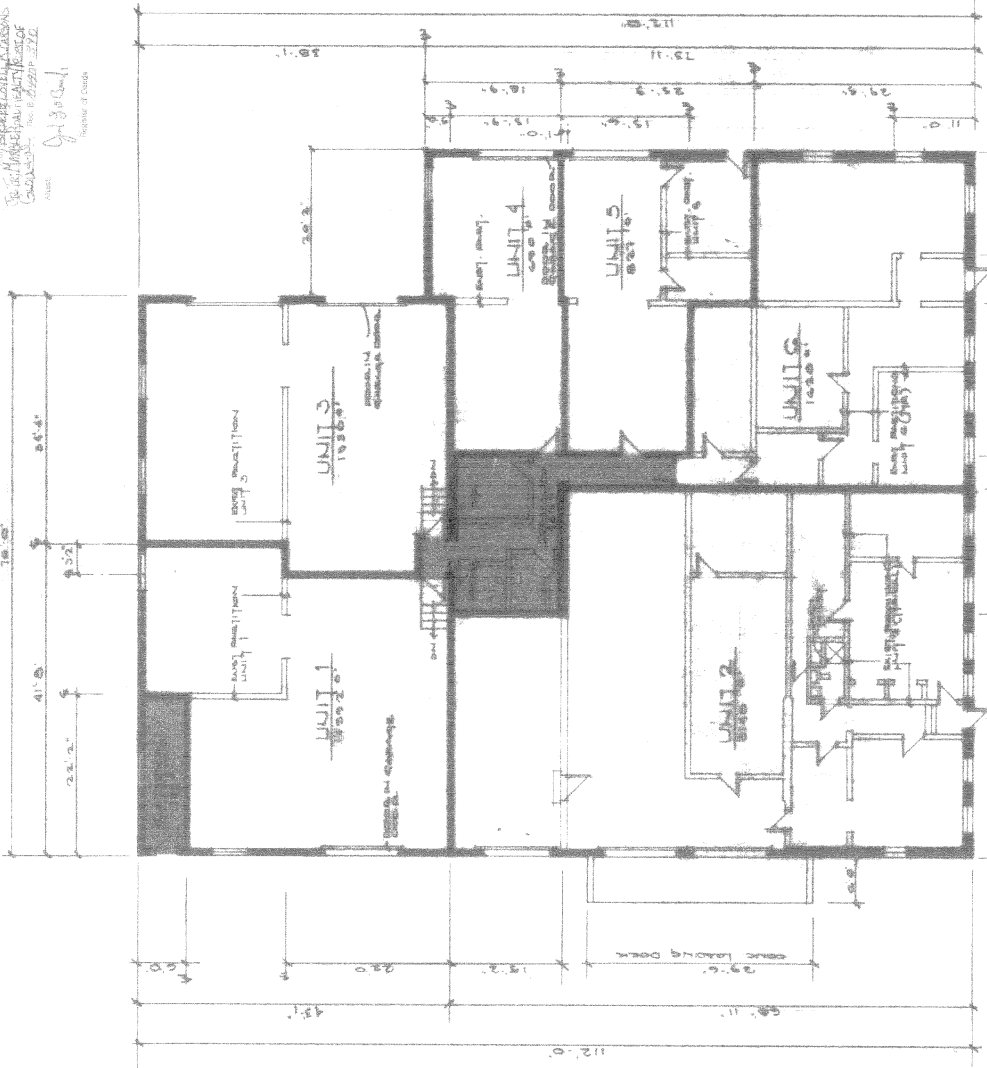


PLAN BOOK 313 PLANS  
 DIVISION OF CONSTRUCTION  
 REGISTERED ARCHITECT  
 P. J. MITNIK ARCHITECTS  
 150 WEST 10TH STREET  
 NEW YORK, N.Y. 10011  
 DATE: 10/15/70  
 SCALE: AS SHOWN  
 SHEET: 1 OF 2



APPROXIMATE AREA

UNIT 1	1030.0
UNIT 2	1030.0
UNIT 3	1030.0
UNIT 4	1030.0
UNIT 5	1030.0
TOTAL	5150.0

COMMON AREA TOTAL: 18,000.0

UNIT FLOOR PLANS  
 FOR PSWICH DAIRY CONDOMINIUMS

NOTICE: THIS PLAN NECESSARILY REFLECTS THE LATEST LOCALITIES AND DISTRICTS. THE NUMBERED UNITS THROUGHOUT THIS PLAN ARE CONSIDERED AS SUCH.

APRIL 17, 1970

CERTIFICATION  
 "I hereby certify this plan conforms to the rules and regulations of the Registry of Issues."

Signature: [Handwritten Signature]  
 Date: 5/1/70



PSWICH DAIRY CONDOMINIUMS UNIT FLOOR PLANS  
 P. J. MITNIK ARCHITECTS

DATE: 10/15/70  
 SCALE: AS SHOWN  
 SHEET: 1 OF 2

1 OF 2