

1300 E. NINE MILE ROAD  
HAZEL PARK, MICHIGAN

INDUSTRIAL FOR SALE OR LEASE  
23,808 Square Feet Available



**SIGNATURE  
ASSOCIATES**  
KNOW SIGNATURE | KNOW RESULTS

**UNIQUE BUILDING WITH HEAVY POWER**



## PROPERTY FEATURES

- 23,808 square feet available
- 12' - 19' clear height
- (2) 10' x 12', 12' x 14' grade level doors, (1) truckwell
- 2000 amps, 480 volts, 3-phase, buss duct
- Office renovated in 2019
- Entire parking lot south of building included in sale
- Located on high traffic Nine Mile with proximity to I-75
- Lease Rate: \$6.75/sq. ft. NNN
- Sale Price: \$1,975,000 (\$82.96/sq. ft.)



For more information, please contact:

**STEVE GORDON**

(248) 948 0101

sgordon@signatureassociates.com

**JOE PLASKEY**

(248) 948 0110

jplaskey@signatureassociates.com

**DAN MORROW**

(248) 799 3144

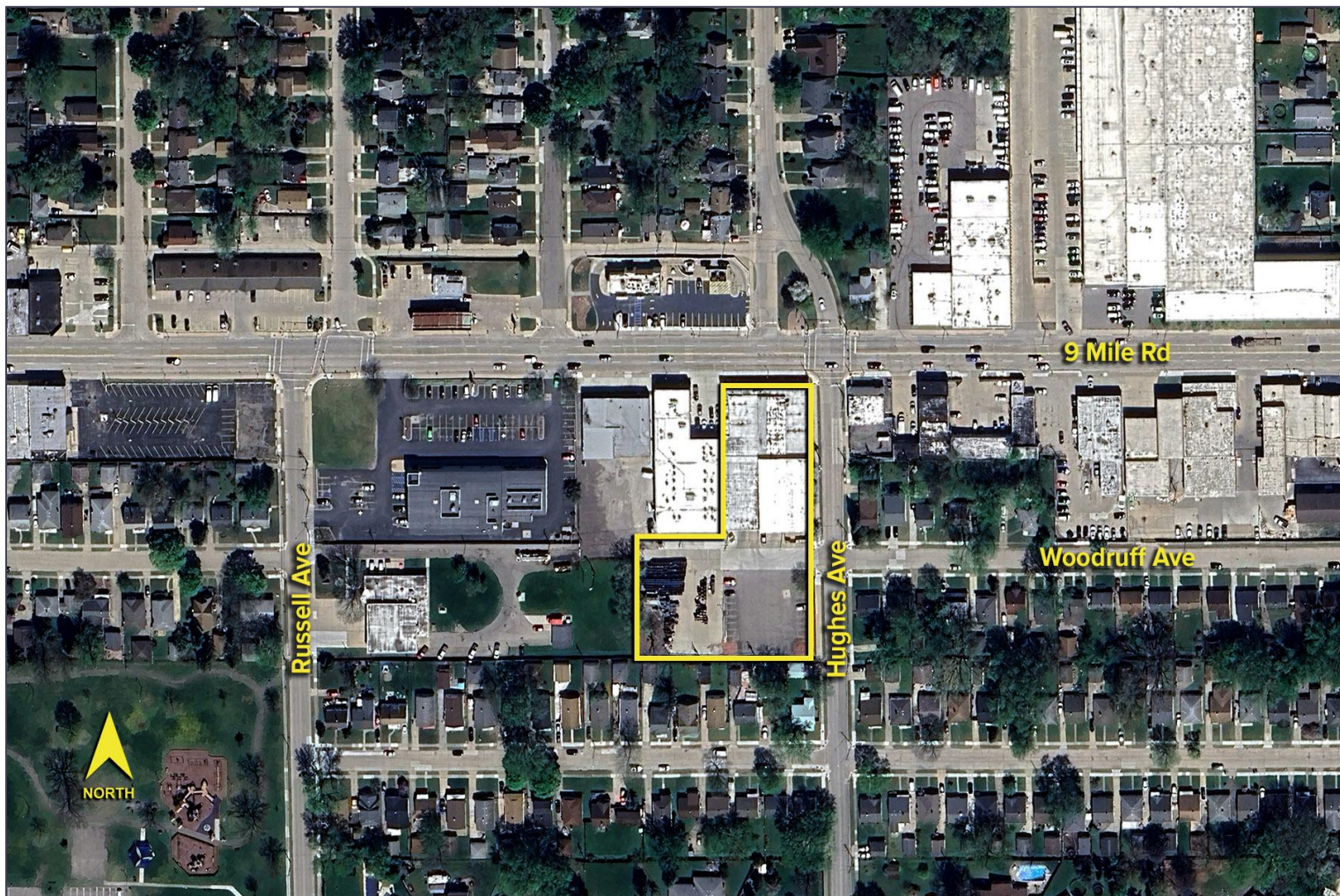
dmorrow@signatureassociates.com

# 1300 E. Nine Mile Road – Hazel Park, Michigan

Industrial For Sale or Lease

23,808  
Square Feet  
AVAILABLE

Aerial



For more information, please contact:

**STEVE GORDON**  
(248) 948 0101

**JOE PLASKEY**  
(248) 948 0110

**DAN MORROW**  
(248) 799 3144

**SIGNATURE ASSOCIATES**  
One Towne Square, Suite 1200  
Southfield, MI 48076  
[www.signatureassociates.com](http://www.signatureassociates.com)