

**12,835 SF**

**WITH EXCESS AREA FOR  
OUTDOOR STORAGE**



**12151 120<sup>th</sup> St S  
Hastings, MN**

**12151 120<sup>th</sup> St S**

**CBRE**

---

# PROPERTY SUMMARY

## BUILDING I

**BUILDING SIZE** 12,835 SF with approx. 3,000 SF of office

**CLEAR** Variable up to 20'

**LOADING** 4 drive ins

**NET RENTAL RATE** \$8.00 PSF

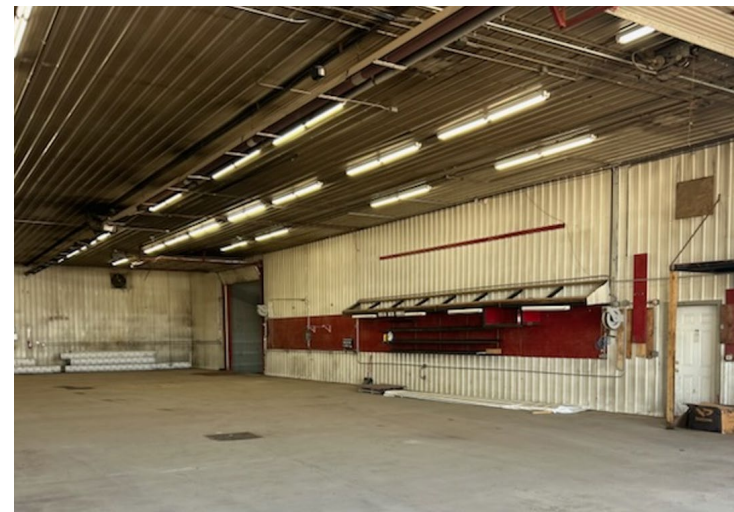
## GARAGE BUILDING

**BUILDING SIZE** 2,040

**LOADING** 10 drive-ins

**OUTDOOR STORAGE** Available

**TAX/OPS** \$2.10 PSF

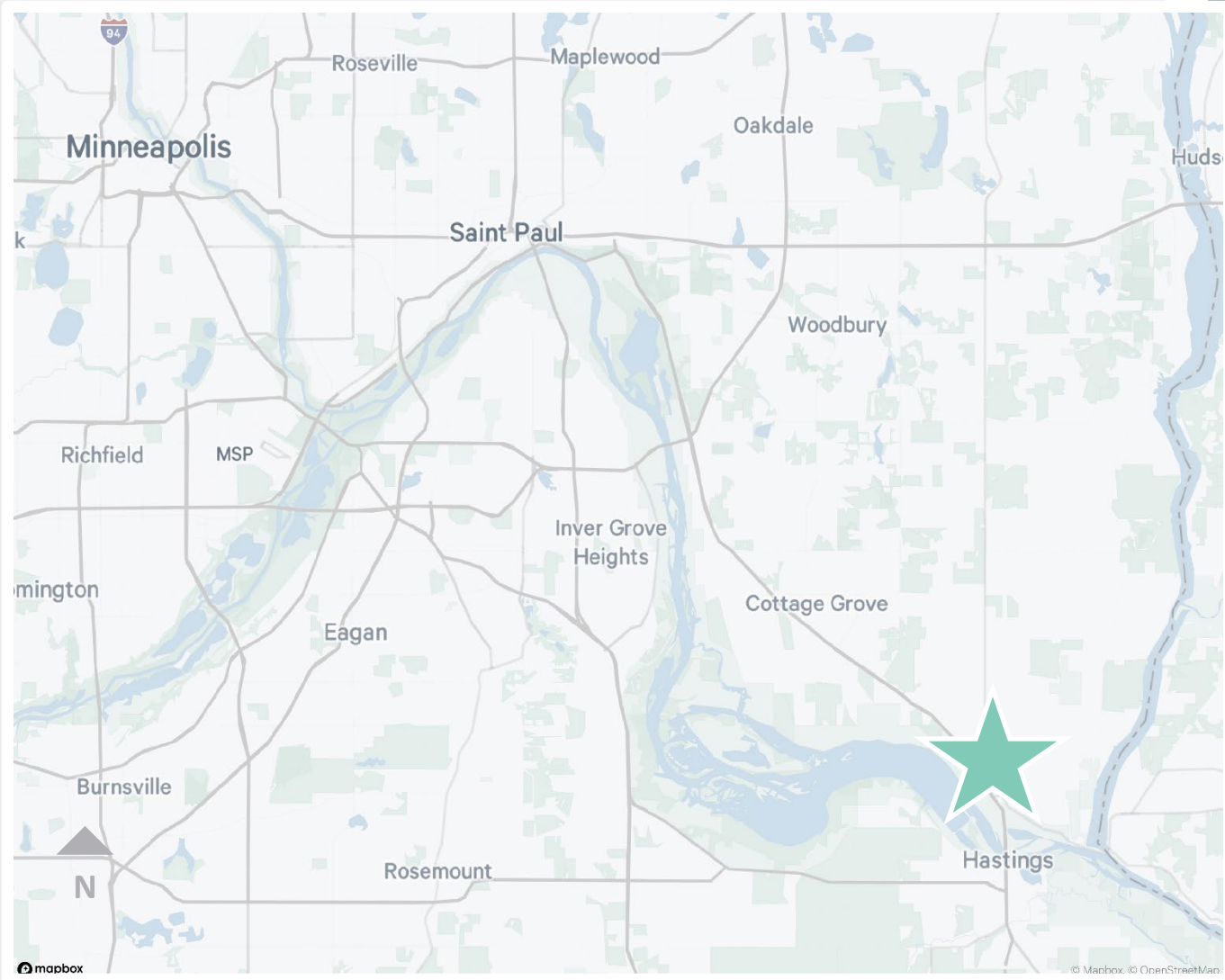


# 12151 120<sup>th</sup> ST S

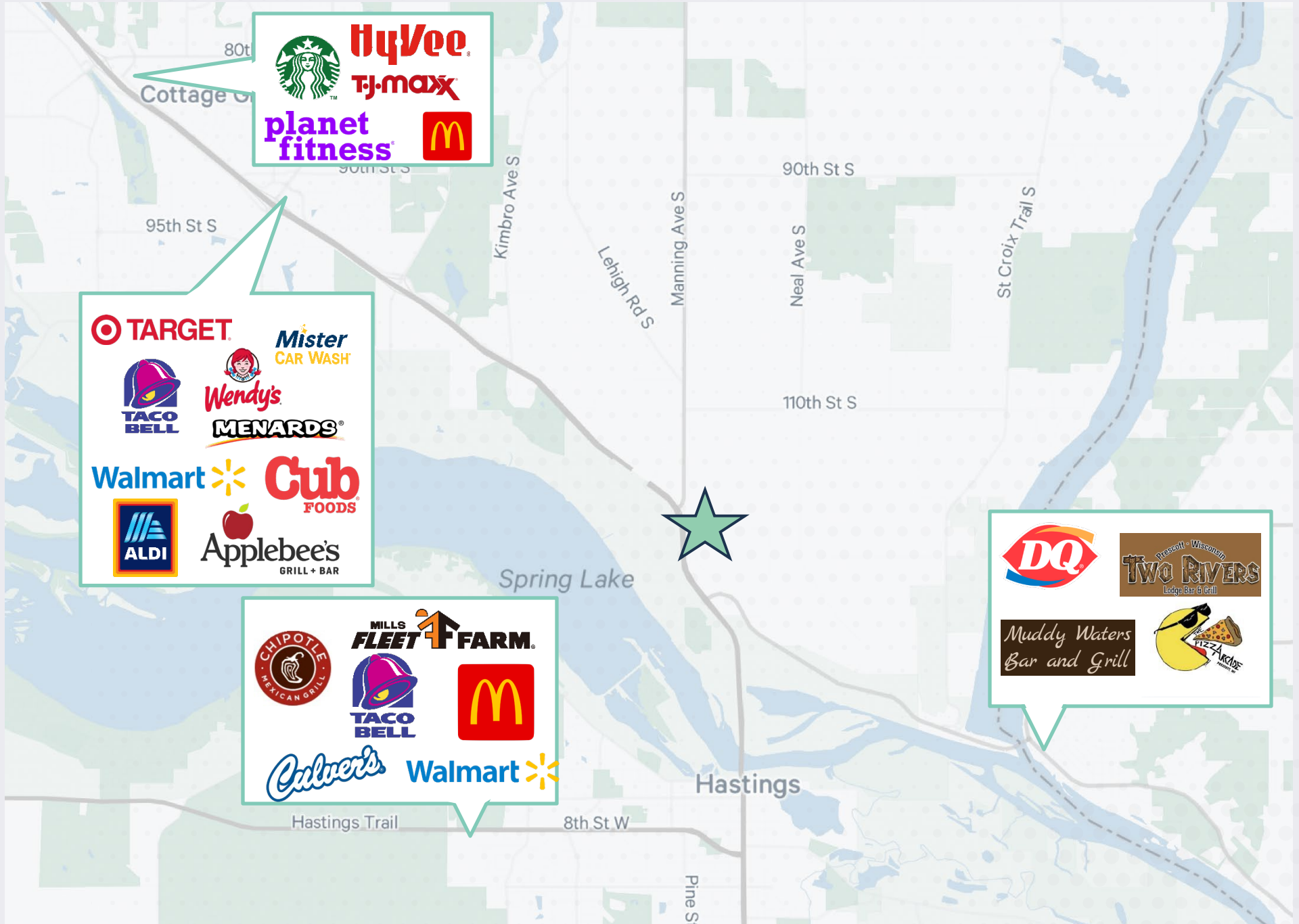
## AERIAL



# LOCATION MAP



# AMENITY MAP



12151 120<sup>th</sup> St S  
HASTINGS, MN

**12,835 SF**  
**SPACE FOR LEASE**

**12151 120<sup>th</sup> St S**

Maxx Schindel  
Associate Broker  
  
+1 218 232 6901  
Maxx.schindel@cbre.com

John Ryden  
Senior Vice President  
  
+1 612 723 9313  
John.ryden@cbre.com

**CBRE**

©2026 CBRE, Inc. All rights reserved. This information has been obtained from sources believed reliable but has not been verified for accuracy or completeness. CBRE, Inc. makes no guarantee, representation or warranty and accepts no responsibility or liability as to the accuracy, completeness, or reliability of the information contained herein. You should conduct a careful, independent investigation of the property and verify all information. Any reliance on this information is solely at your own risk. CBRE and the CBRE logo are service marks of CBRE, Inc. All other marks displayed on this document are the property of their respective owners, and the use of such marks does not imply any affiliation with or endorsement of CBRE. Photos herein are the property of their respective owners. Use of these images without the express written consent of the owner is prohibited.