

1,683 SF

Industrial Condo For Sale



BROWN
COMMERCIAL GROUP, INC.

785 OAKWOOD ROAD, STE. E-102, LAKE ZURICH, IL 60047

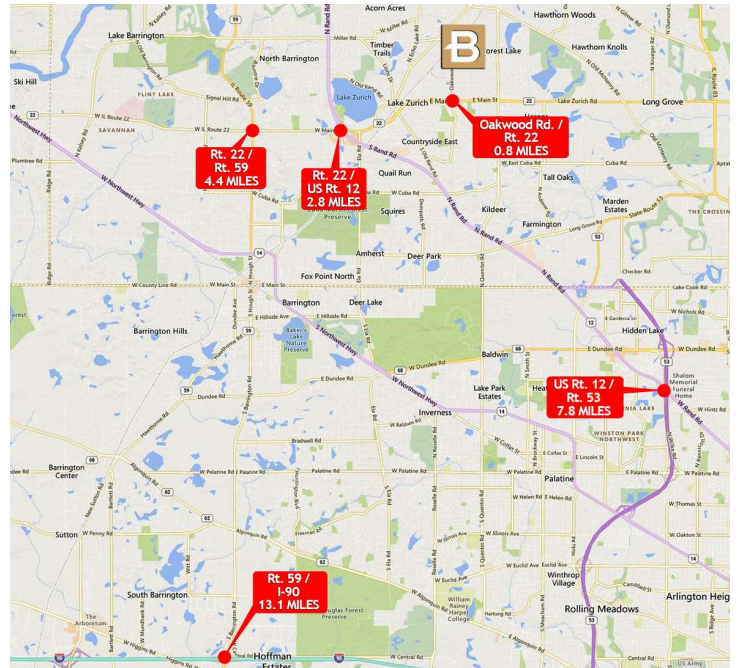


LOCATION DESCRIPTION

Established industrial park with easy access to major transportation routes via nearby Rt. 22, US Rt. 12.

PROPERTY OVERVIEW

- 1,683 SF Industrial Condo For Sale
- Approximately 350 SF Office Space
- 14'6" Clear Height
- 1 Drive-in Door (10' x 10')
- Kitchenette
- Mop Sink
- Skylight
- 150 Amp, 240 Volt, 3 Phase Power
- Fully Sprinklered
- Common Parking
- Condo Association Dues: \$287.66/Month
- Sale Price: Subject to Offer



COLLIN TYRRELL

847.758.9200 x303

CTYRRELL@BROWNCOMMERCIAL.COM

BROWNCOMMERCIAL.COM



1400 E. HIGGINS RD. SUITE A, ELK GROVE VILLAGE, IL 60007



847.758.9200

No warranties or representations is made as to the accuracy of the foregoing information. Terms and availability are subject to changes or withdrawal without notice

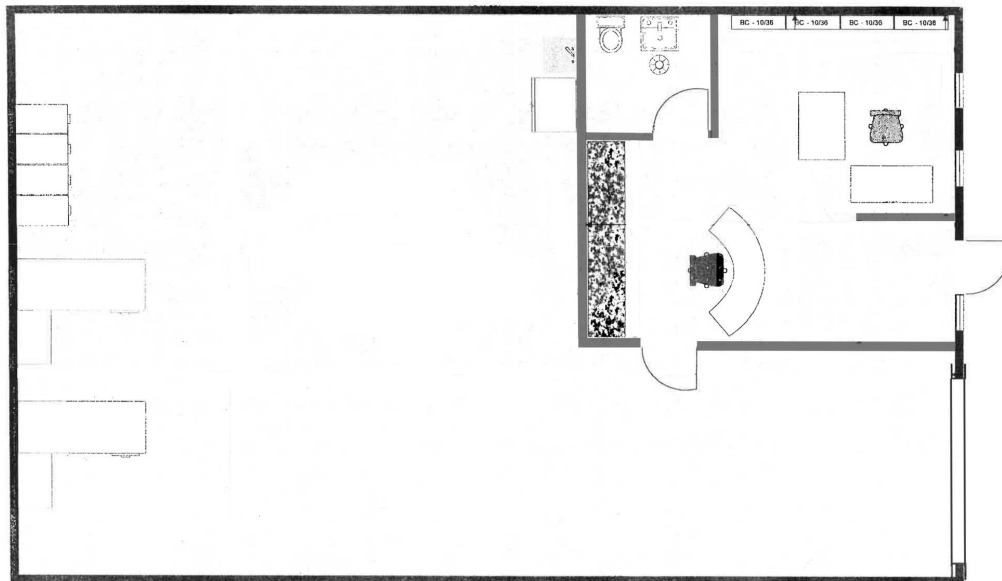
1,683 SF

Industrial Condo For Sale



BROWN
COMMERCIAL GROUP, INC.

785 OAKWOOD ROAD, STE. E-102 LAKE, ZURICH, IL 60047



785 Oakwood E102

Scale: 1/4" = 1'-0"

COLLIN TYRRELL

847.758.9200 x303

CTYRRELL@BROWNCOMMERCIAL.COM

BROWNCOMMERCIAL.COM

//

1400 E. HIGGINS RD. SUITE A, ELK GROVE VILLAGE, IL 60007

//

847.758.9200

No warranties or representations is made as to the accuracy of the foregoing information. Terms and availability are subject to changes or withdrawal without notice