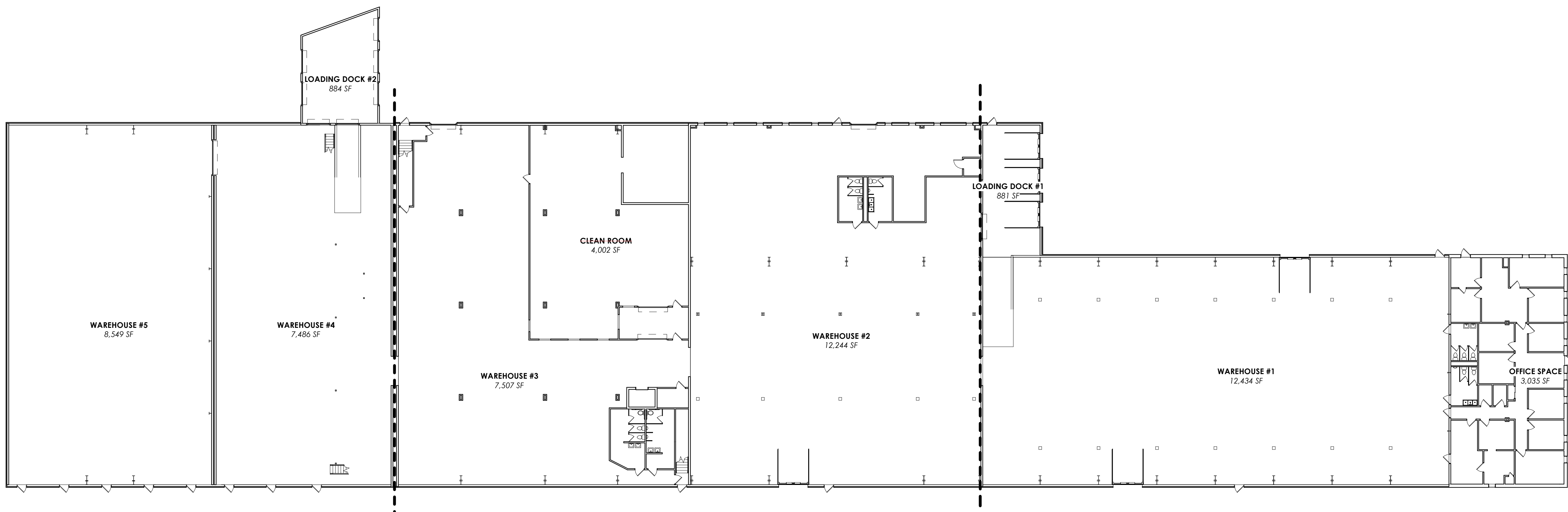


② Level 2 - Overall  
1" = 20'-0"



① Floor Plan - Overall  
1" = 20'-0"

ARCHITECT/ENGINEER STAMPS

NEW YORK STATE EDUCATION LAW ARTICLE 147, SECTION 2207 PART 69.5B  
 IT IS A VIOLATION OF THE LAW FOR ANY PERSON, UNLESS ACTING UNDER THE DIRECTION OF A LICENSED ARCHITECT, TO ALTER AN ITEM IN ANY WAY. IF AN ITEM BEARING THE SEAL OF AN ARCHITECT IS ALTERED, THE ALTERING ARCHITECT SHALL AFFIX TO HIS ITEM THE SEAL AND THE NOTATION "ALTERED BY" FOLLOWED BY HIS SIGNATURE AND THE DATE OF SUCH ALTERATION, AND A SPECIFIC DESCRIPTION OF THE ALTERATION."

APPROVALS & DATES

NAME	DATE

ISSUE DATE

February 22, 2024

REVISIONS

No.	Date	Description

DESIGN DEVELOPMENT

PROJECT INFO

**Roehling**  
 105 Elmore Drive  
 Rochester, NY 14606

ROZZI ARCHITECTS  
 PROJECT NUMBER: 24-109

SHEET TITLE  
 FLOOR PLANS - OVERALL

SHEET NUMBER

**A000**