

2451 ATRIUM WAY

/

NASHVILLE, TN

# LANDERS PLAZA



**SOUTHWESTERN**  
FAMILY OF COMPANIES

**FOUNDRY**  
COMMERCIAL

# 1,863- 21,733 SF

---

FULL FLOOR AVAILABILITY

---

RATE - \$26/SF FSG

---

PARKING RATIO - 4/1000

---

POTENTIAL USE - OFFICE, MEDICAL OFFICE

---

## PROPERTY OVERVIEW

## SPACE

---

NEWLY RENOVATED

---

COMMON AREA

---

## AMENITIES

---

CONFERENCE SPACE,

---

MEETING ROOMS,

---

ON-SITE MAINTENANCE,

---

ON-SITE SECURITY

---

## LOCATION

---

CONVENIENT ACCESS

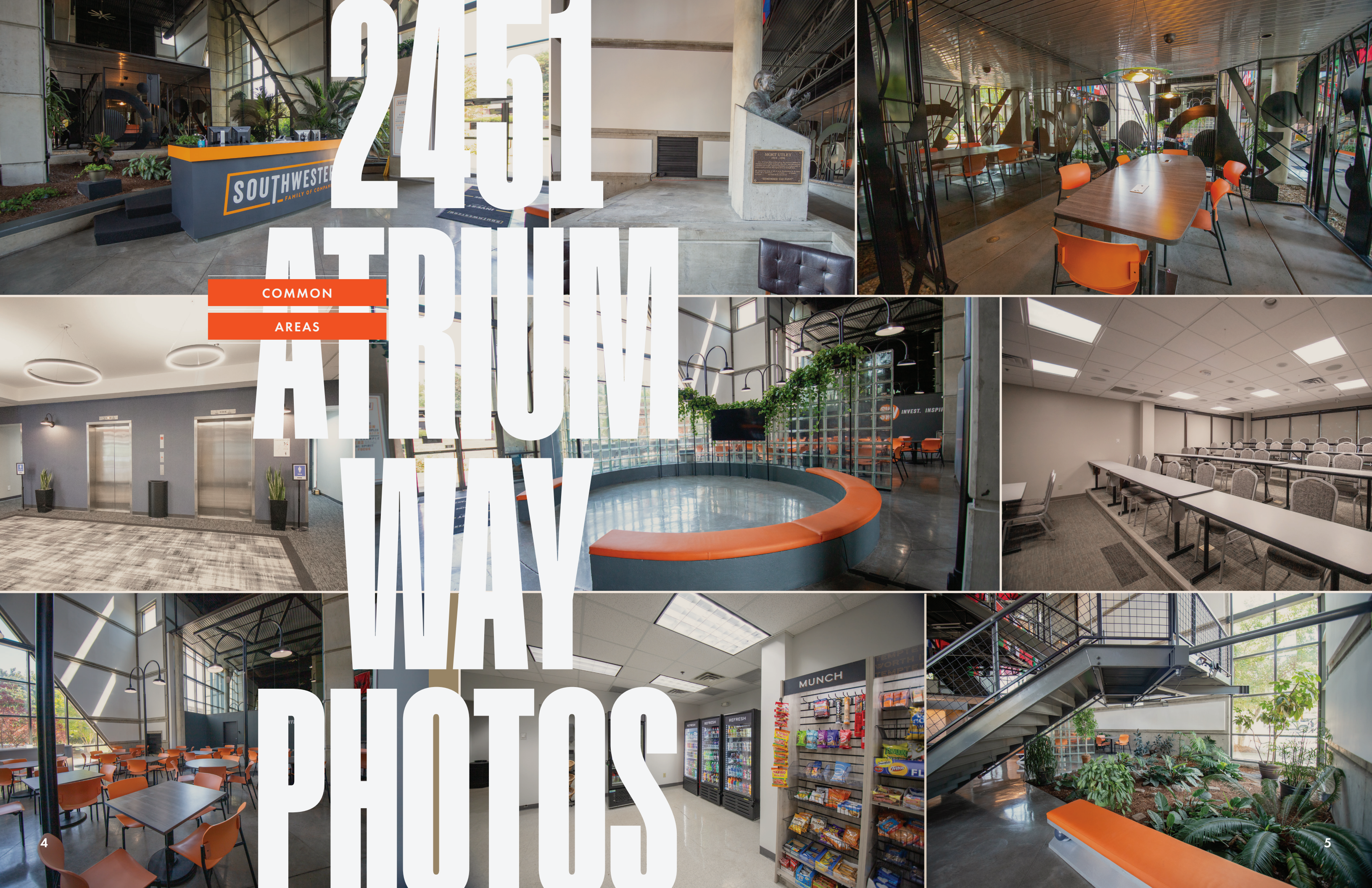
---

BRILEY PARKWAY, I-40

---

BNA, DOWNTOWN

---



COMMON

AREAS

# 24/7 ATRIUM WAY PHOTOS

**DOWNTOWN**

15 MINUTES

**LANDERS PLAZA**

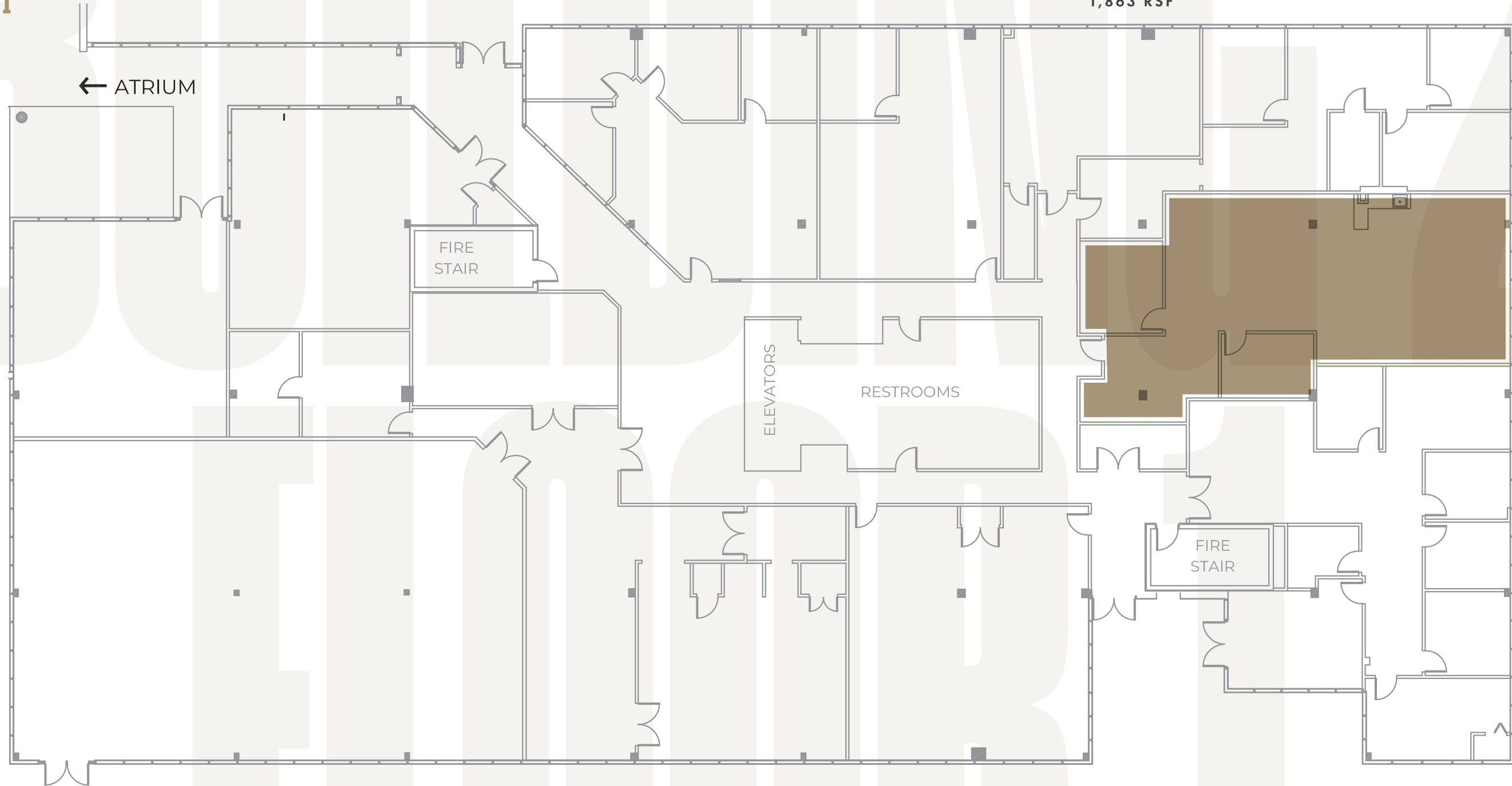
**BNA**

6 MINUTES



**BUILDING 2  
FLOOR 1**

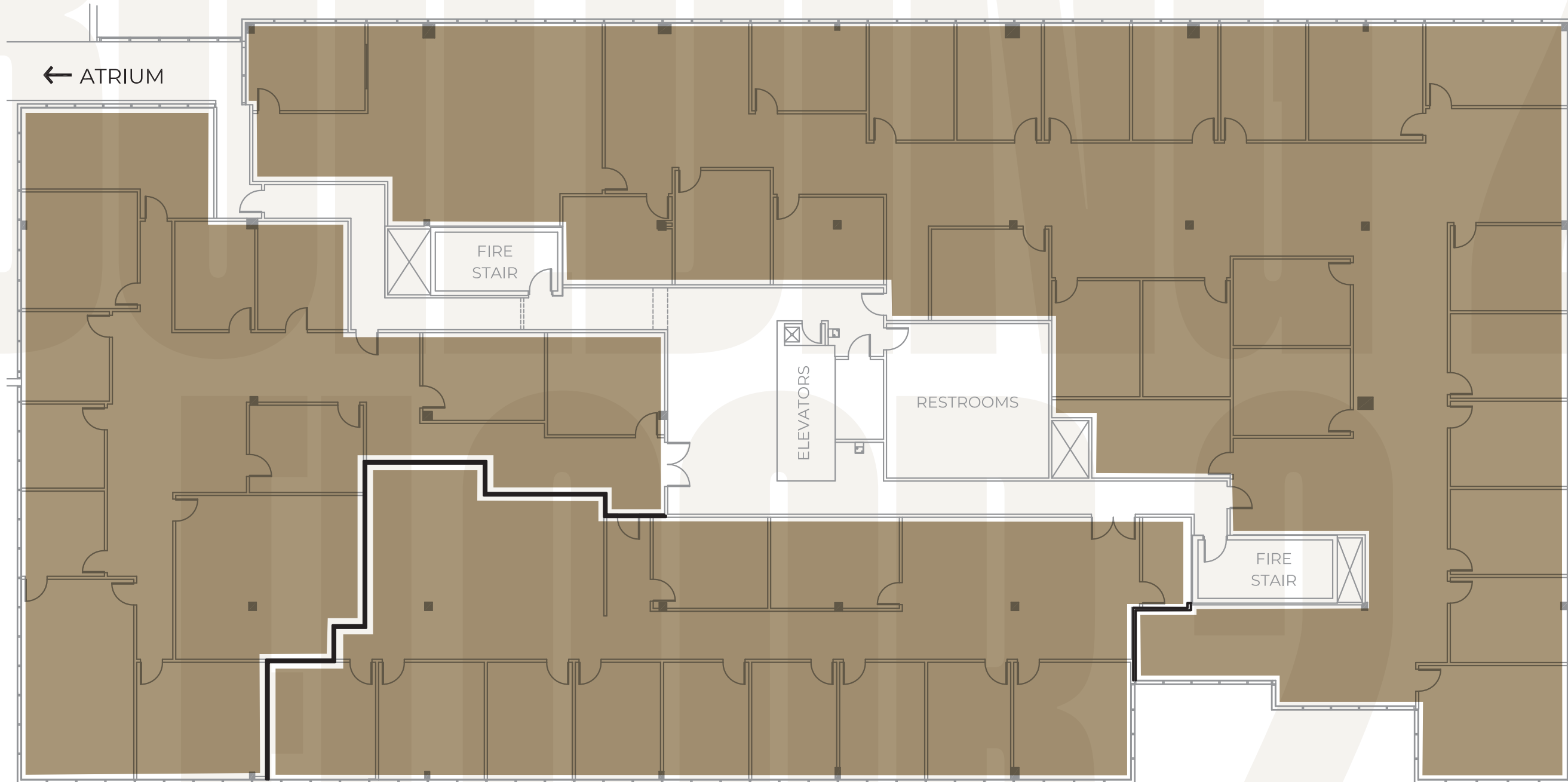
**SUITE 124  
1,863 RSF**



**BUILDING 2  
FLOOR 2**

**SUITE 220**

11,102 RSF



**SUITE 221**

5,338 RSF

**SUITE 222**

5,293 RSF

FULL FLOOR

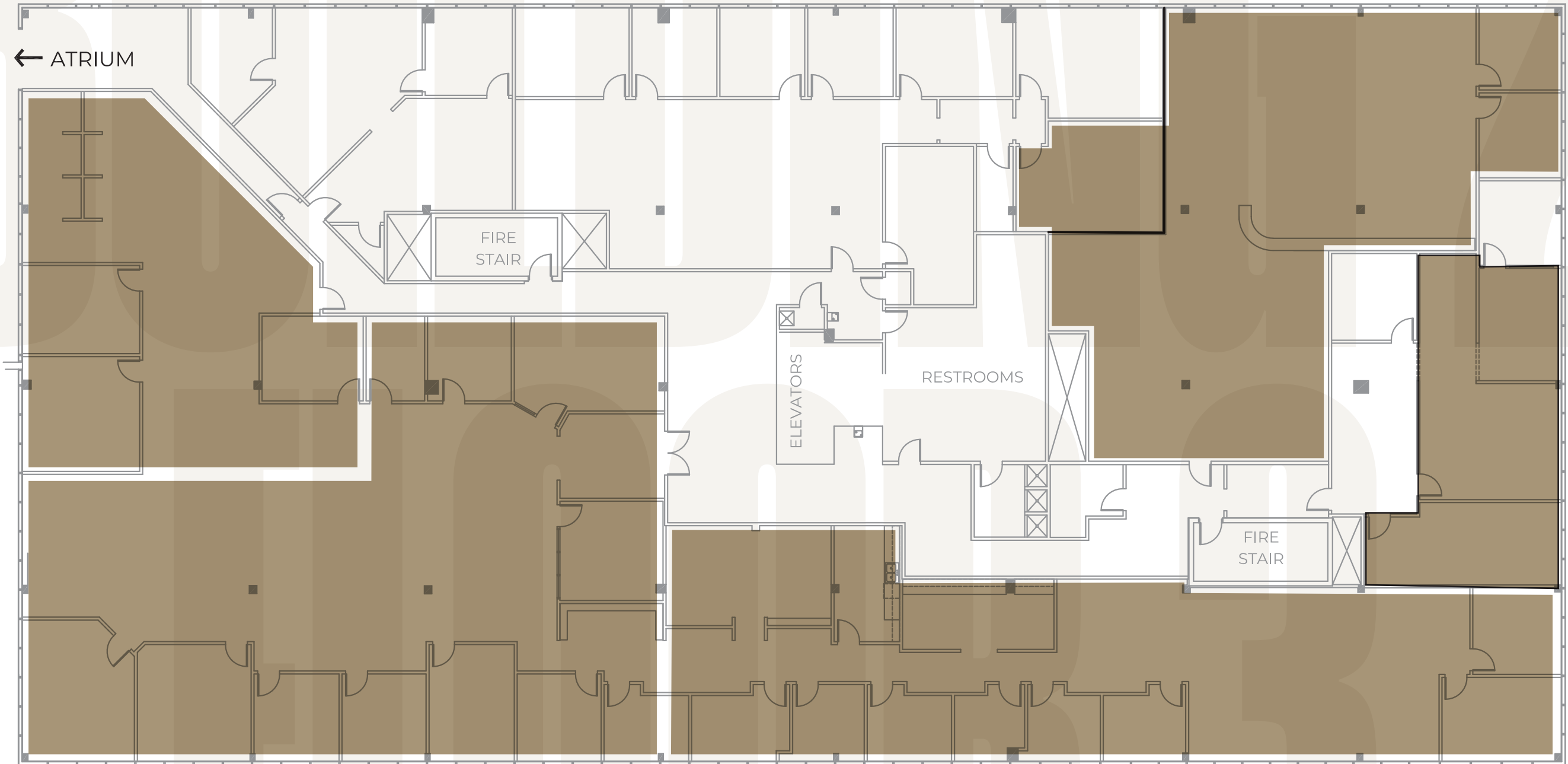
AVAILABILITY

**BUILDING 2  
FLOOR 3**

**SUITE 2-3B  
3,217 RSF**

**SUITE 2-3E  
2,323 RSF**

**SUITE 321  
1,580 RSF**



**SUITE 2-3D  
5,094 RSF**

**SUITE 2-3C  
3,827 RSF**



2451 ATRIUM WAY

/

NASHVILLE, TN

# LANDERS PLAZA



## SHELBY HALL

[shelby.hall@foundrycommercial.com](mailto:shelby.hall@foundrycommercial.com)

**901.517.3867**

## DAN BAUCHIERO

[dan.bauchiero@foundrycommercial.com](mailto:dan.bauchiero@foundrycommercial.com)

**615.423.6851**

**SOUTHWESTERN**  
FAMILY OF COMPANIES

**FOUNDRY**  
COMMERCIAL