

3004 SPRING INDUSTRIAL DR. SUITES A & B

POWDER SPRINGS, GA 30127

For Lease
30,000± SF Office / Warehouse

WILSON COVINGTON, SIOR

Senior Vice President

404.942.2073

wcovington@kingindustrial.com

RANDALL BRYAN, SIOR

Senior Vice President

404.942.2015

rbryan@kingindustrial.com

IAN HICKS

Associate

678.348.6319

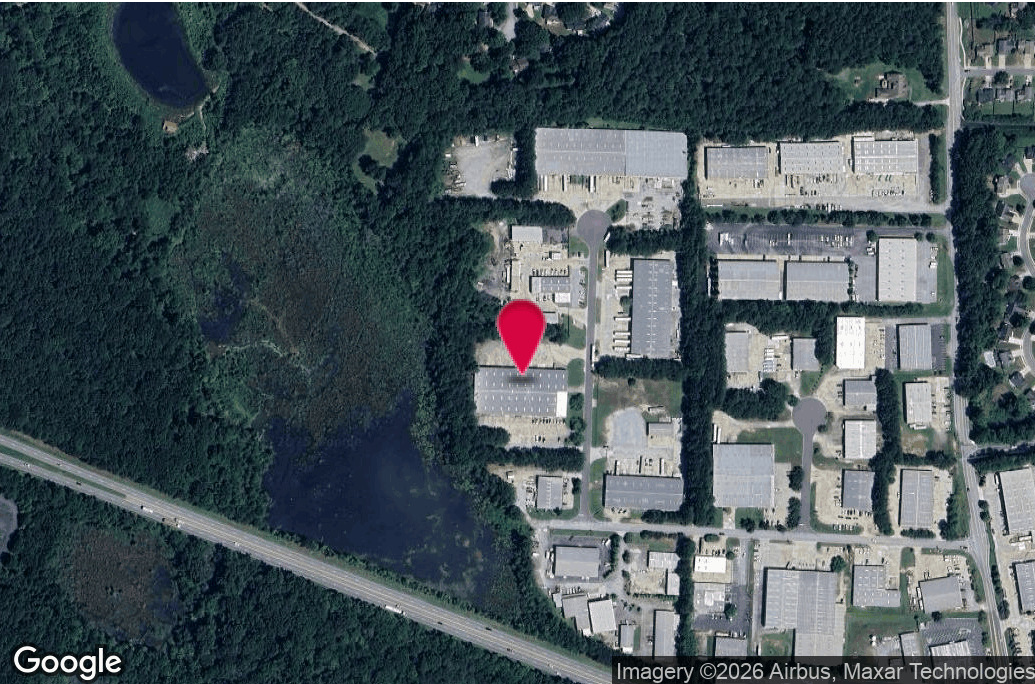
ihicks@kingindustrial.com

King *Industrial
Realty, Inc.*

Industrial • Commercial • Investment

404.942.2000 | kingindustrial.com

FOR LEASE
30,000± SF OFFICE /
WAREHOUSE



PROPERTY HIGHLIGHTS

- 4,800± SF Office
- 2,000 Amps @ 480 Volt Power
- 8 Dock High Doors
- (2) 14' x 14' Grade Level Doors
- Normal Hazard Sprinklers
- 20' Clear Height
- Close Proximity to Norfolk Southern Intermodal Yard

BUILDING SUMMARY

Lot Size:	3.24 Acres
Building Size:	45,000 SF
Zoning:	LI

WILSON COVINGTON, SIOR

Senior Vice President

404.942.2073

wcovington@kingindustrial.com

RANDALL BRYAN, SIOR

Senior Vice President

404.942.2015

rbryan@kingindustrial.com

IAN HICKS

Associate

678.348.6319

ihicks@kingindustrial.com



Industrial • Commercial • Investment
404.942.2000 | kingindustrial.com

ADDITIONAL PHOTOS



WILSON COVINGTON, SIOR

Senior Vice President

404.942.2073

wcovington@kingindustrial.com

RANDALL BRYAN, SIOR

Senior Vice President

404.942.2015

rbryan@kingindustrial.com

IAN HICKS

Associate

678.348.6319

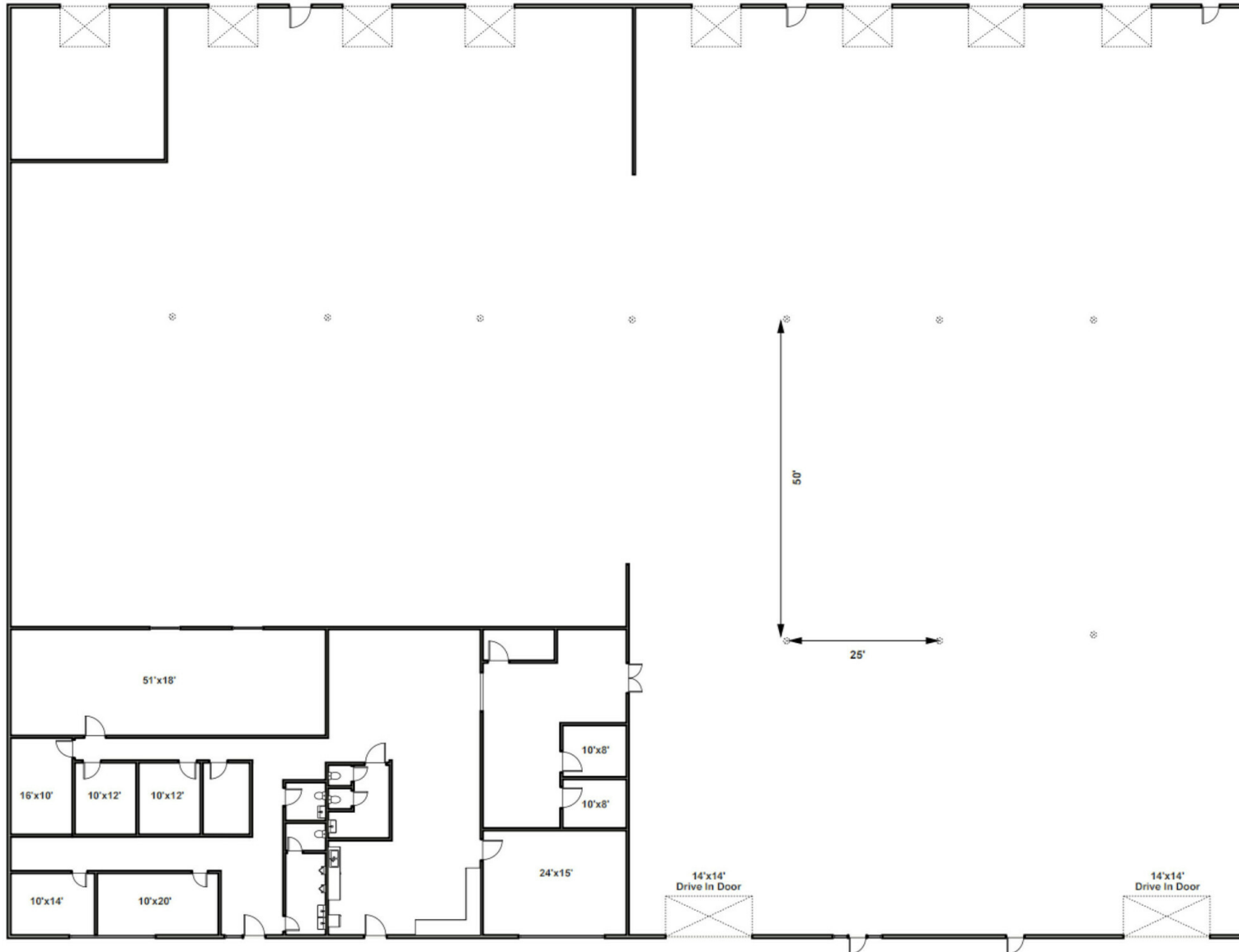
ihicks@kingindustrial.com

Every effort has been made to provide accurate information, but no liability is assumed for errors or omissions.



Industrial • Commercial • Investment
404.942.2000 | kingindustrial.com

FLOOR PLAN



WILSON COVINGTON, SIOR

Senior Vice President

404.942.2073

wcovington@kingindustrial.com

RANDALL BRYAN, SIOR

Senior Vice President

404.942.2015

rbryan@kingindustrial.com

IAN HICKS

Associate

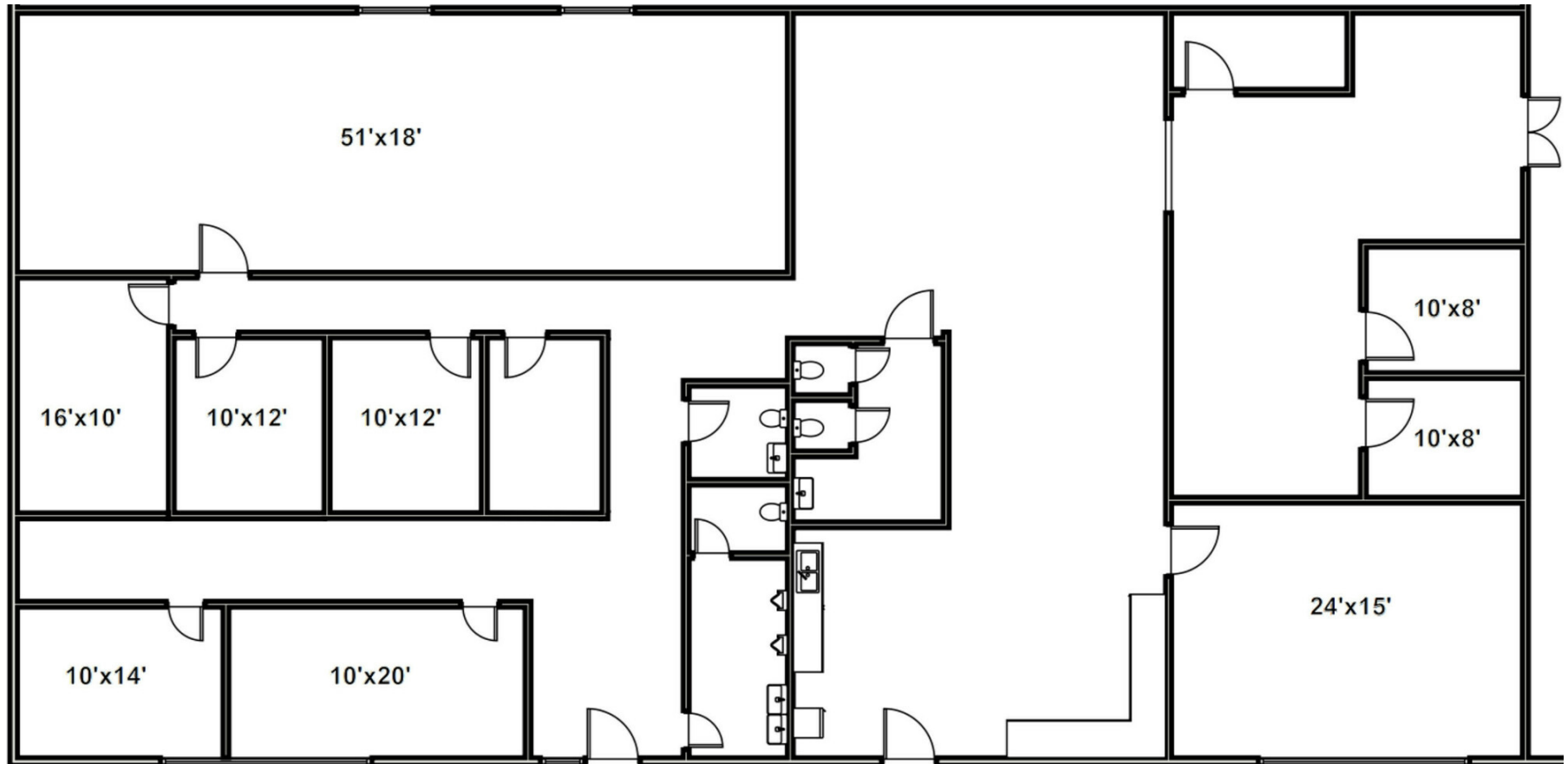
678.348.6319

ihicks@kingindustrial.com

King Industrial Realty, Inc. **CORFAC** INTERNATIONAL

Industrial • Commercial • Investment
404.942.2000 | kingindustrial.com

OFFICE FLOOR PLAN



WILSON COVINGTON, SIOR

Senior Vice President

404.942.2073

wcovington@kingindustrial.com

RANDALL BRYAN, SIOR

Senior Vice President

404.942.2015

rbryan@kingindustrial.com

IAN HICKS

Associate

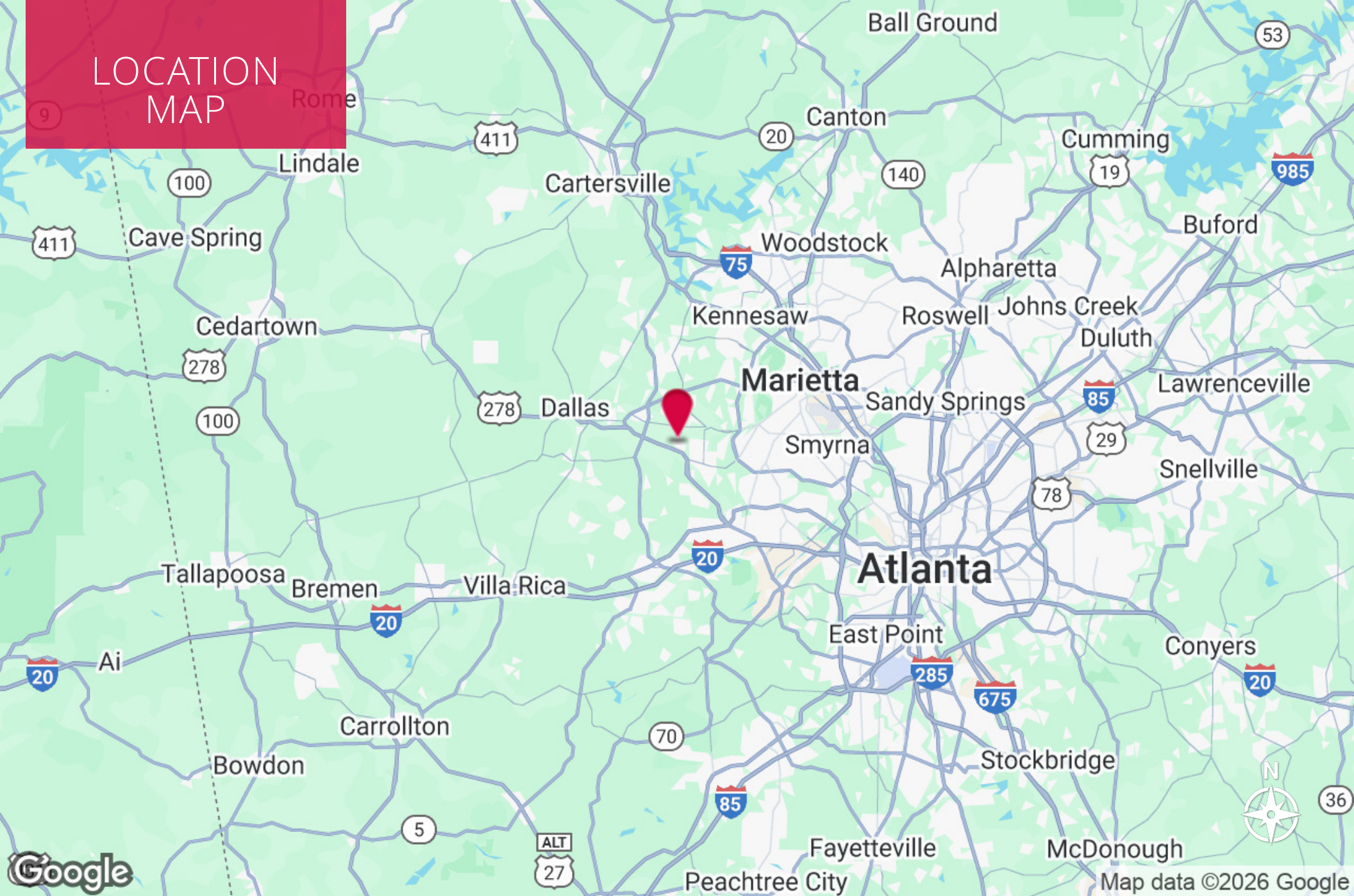
678.348.6319

ihicks@kingindustrial.com

King Industrial
Realty, Inc. **CORFAC**
INTERNATIONAL

Industrial • Commercial • Investment
404.942.2000 | kingindustrial.com

LOCATION MAP



WILSON COVINGTON, SIOR

Senior Vice President

404.942.2073

wcovington@kingindustrial.com

RANDALL BRYAN, SIOR

Senior Vice President

404.942.2015

rbryan@kingindustrial.com

IAN HICKS

Associate

678.348.6319

ihicks@kingindustrial.com



Industrial • Commercial • Investment
404.942.2000 | kingindustrial.com

EXCLUSIVELY LISTED BY:

WILSON COVINGTON, SIOR

Senior Vice President
wcovington@kingindustrial.com
404.942.2073

RANDALL BRYAN, SIOR

Senior Vice President
rbryan@kingindustrial.com
404.942.2015

IAN HICKS

Associate
ihicks@kingindustrial.com
678.348.6319

King *Industrial
Realty, Inc.*

Industrial • Commercial • Investment
404.942.2000 | kingindustrial.com