



ROYAL KUNIA SHOPPING CENTER

94-615 Kupuohi St. Waipahu, HI 96797

www.cbi-hawaii.com

FOR LEASE

NAI CBI Hawaii is pleased to present office/retail spaces at Royal Kunia. Nestled in the beautiful community of Kunia, this shopping center serves the largely populated areas of Central and West Oahu. Featuring a variety of merchants, this location boasts high foot and vehicular traffic. Conveniently located with quick and easy freeway access.

PROPERTY DETAILS

Address:	94-615 Kupuohi St Waipahu, HI 96797
Space Available:	Suite 203: 1,410 SF
Base Rent:	\$4.00 per SF/mo
CAM:	\$1.19 per SF/mo
Terms:	2+ Years
TMK:	1-9-4-146-16
Zoning:	B-2

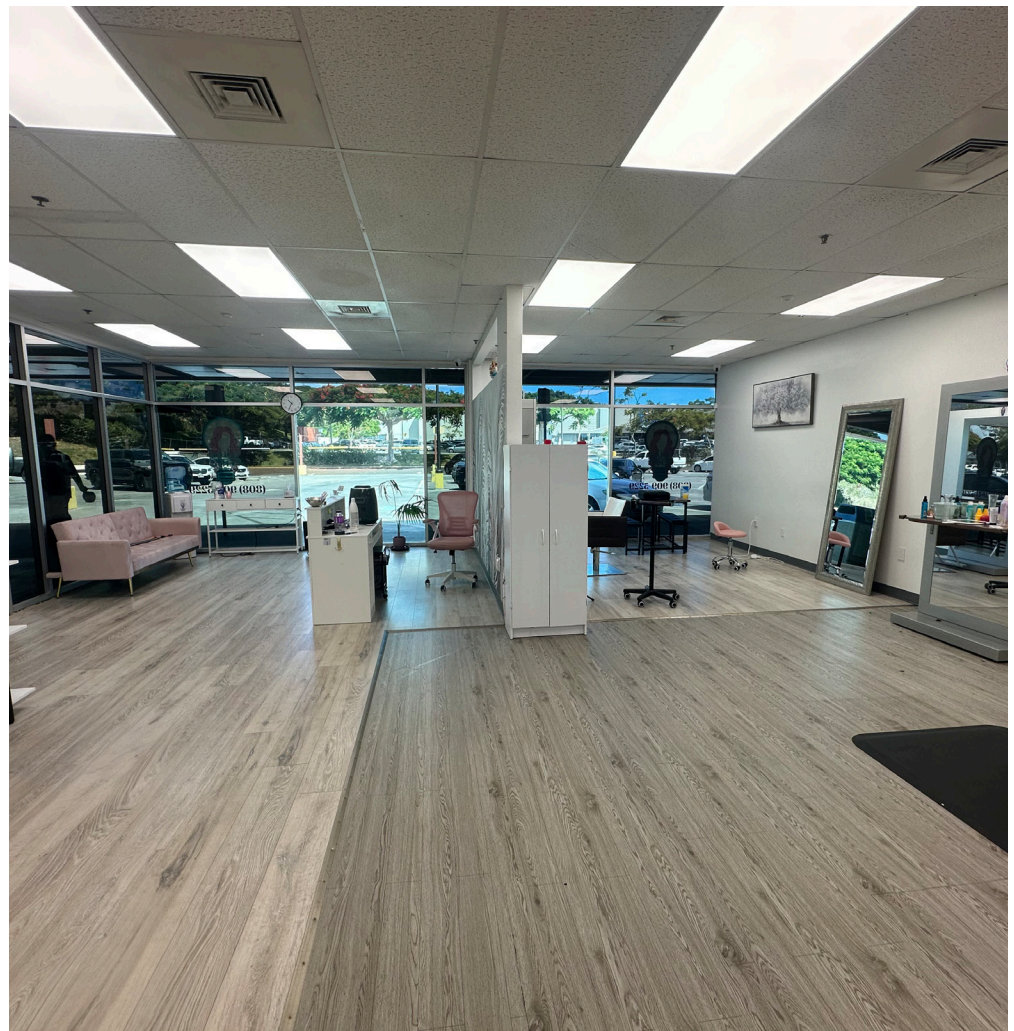
HIGHLIGHTS

- Easy access to H-1 Freeway
- Ample guest parking
- Prominent signage available
- High foot traffic shopping center
- Parking in front of all units
- Anchored by Times Supermarket
- Next door to Walmart and McDonalds
- Neighboring Bank of Hawaii, Kaleiopuu Elementary School, Park and Ride, Starbucks, plus much more!

Suite 203 Features

- 1,410 SF
- Built out for a fully operational salon.
- Possibility for retail, office, or fresh food establishment.
- Water available.
- Electric separately metered.
- Two separate double door entries/exits.
- Floor to ceiling window views on both sides of unit.
- Next to restroom, stairs, and elevator.





POINTS OF INTEREST

 **Bank of Hawaii**

 **Times**

Walmart 



CONTACT

Taryn Taylor (S)

RS-85465

808-282-4583

ttaylor@cbi-hawaii.com



1712 S King St Suite 201

Honolulu, HI 96826

808.942.7100

www.cbi-hawaii.com

The information contained herein has been obtained from sources reliable but has not been verified and no guarantee, Warranty or representation, either express or implied, is made with respect to such information. Terms of sale or lease and availability are subject to change or withdrawal without notice.

