

E I G H T H & M A I N

For Lease
Office Space



Property Highlights

- | Multifunctional space designed with business in mind
- | State-of-the-art, high performance systems resulting in reduced occupancy costs
- | LEED-certified, environmentally-responsible, and sustainable with recycled or recyclable materials
- | 181 exclusive parking stalls within the building
- | Shower facilities on every floor
- | Stretcher and freight sized elevators

Property Profile

- | Class 'A' office building on downtown Boise's most visible and vibrant downtown corner with over a quarter million square feet of office space

Available Suites

- | 6th Floor - 3,172-15,061 RSF
- | 15th Floor - 19,577 RSF

800 West Main Street | Boise, Idaho 83702

For more information, please contact:

Rachael Brown
208.246.8909
rachael.brown@gardnergroupp.com

Laura McIver
208.246.8909
laura.mciver@gardnergroupp.com

David Wali
208.246.8909
david.wali@gardnergroupp.com

E I G H T H & M A I N

Amenities

- | Concierge Services
 - | Conference room booking
 - | Bike Share
 - | Onsite oil changes, windshield repair, and car washes/detailing
 - | Drycleaning pickup/delivery services
- | Gym onsite



8th & Main Gym

Lobby

- | Restaurants, retail shops, financial services, and hotels adjacent to the building
- | Immediate access to all regions of the Boise MSA via Front Street and I-84
- | Major Tenants include:
 - | Zions Bank
 - | Holland & Hart
 - | Cushing Terrell
 - | Parsons Behle & Latimer
 - | Ruth's Chris Steakhouse

For more information, please contact:

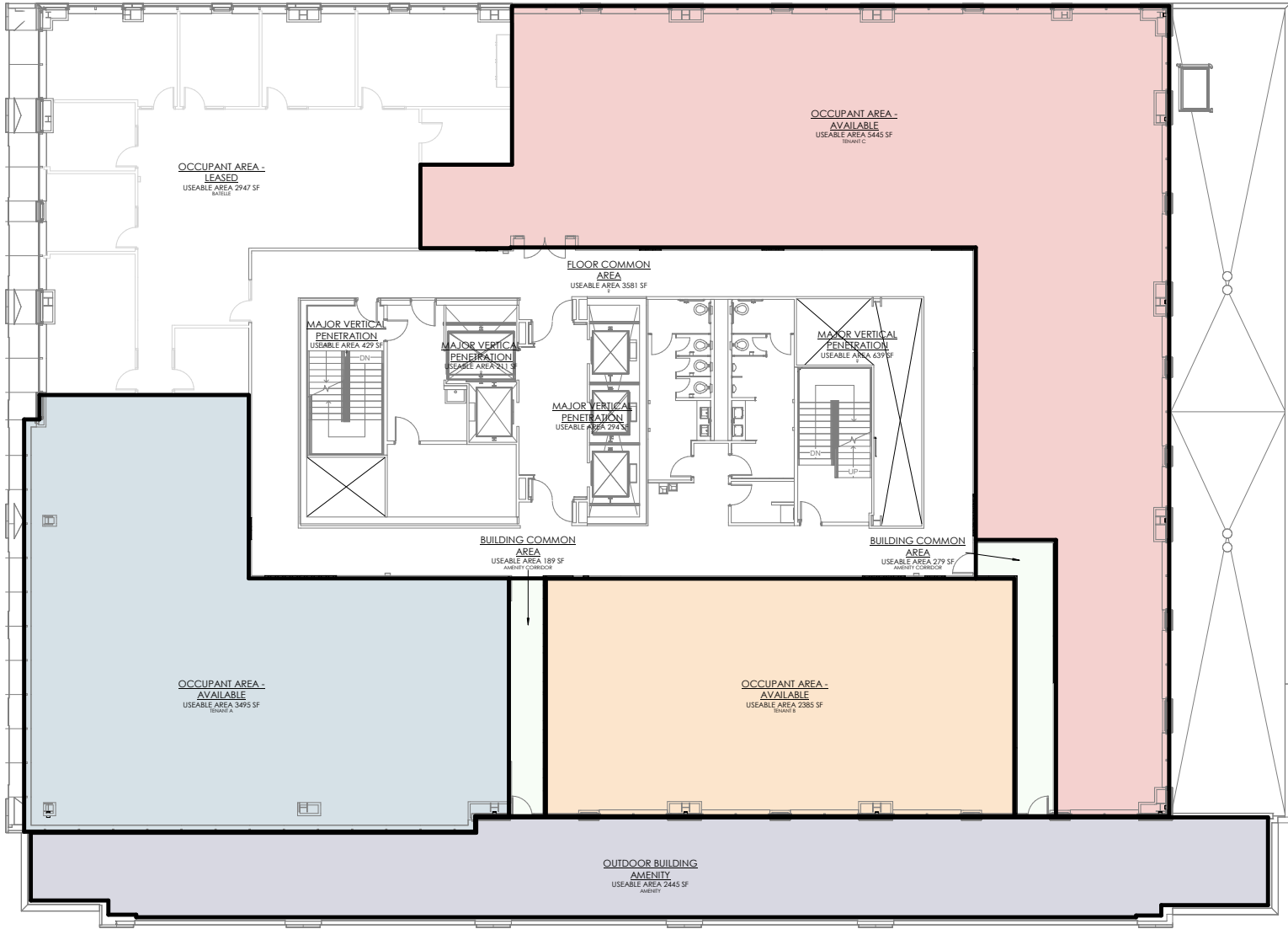
Rachael Brown
208-246-8909
rachael.brown@gardnergroupp.com

Laura McIver
208-246-8909
laura.mciver@gardnergroupp.com

David Wali
208-246-8909
david.wali@gardnergroupp.com

E I G H T H & M A I N

6th Floor Office Space



Suite 600 - 3,172-15,061 RSF | Available Now

For more information, please contact:

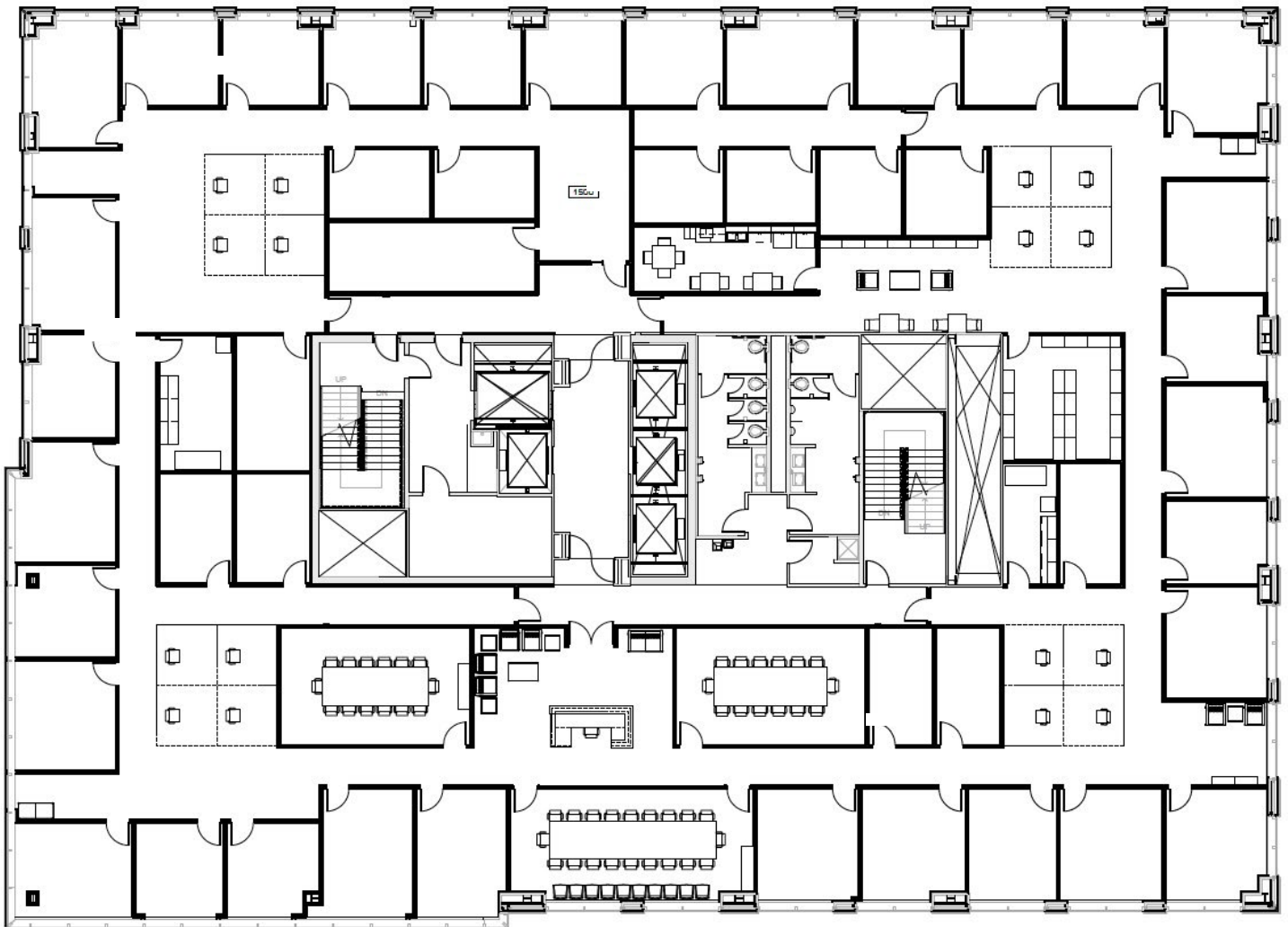
Rachael Brown
208.246.8909
rachael.brown@gardnergroupp.com

Laura McIver
208.246.8909
laura.mciver@gardnergroupp.com

David Wali
208.246.8909
david.wali@gardnergroupp.com

E I G H T H & M A I N

15th Floor
Office Space



Suite 1500 - 19,577 SF | Available March 2026

For more information, please contact:

Rachael Brown
208.246.8909
rachael.brown@gardnergroupp.com

Laura McIver
208.246.8909
laura.mciver@gardnergroupp.com

David Wali
208.246.8909
david.wali@gardnergroupp.com



E I G H T H & M A I N



Stunning Views

For more information, please contact:

Rachael Brown
208.246.8909
rachael.brown@gardnergroupp.com

Laura McIver
208.246.8909
laura.mciver@gardnergroupp.com

David Wali
208.246.8909
david.wali@gardnergroupp.com

This information was obtained from sources deemed reliable. We have no reason to doubt its accuracy, but unfortunately, we cannot guarantee it. Properties subject to change and withdrawal without notice.