

## PROPERTY SUMMARY

### 301 RIVER STREET, OSCEOLA, MN

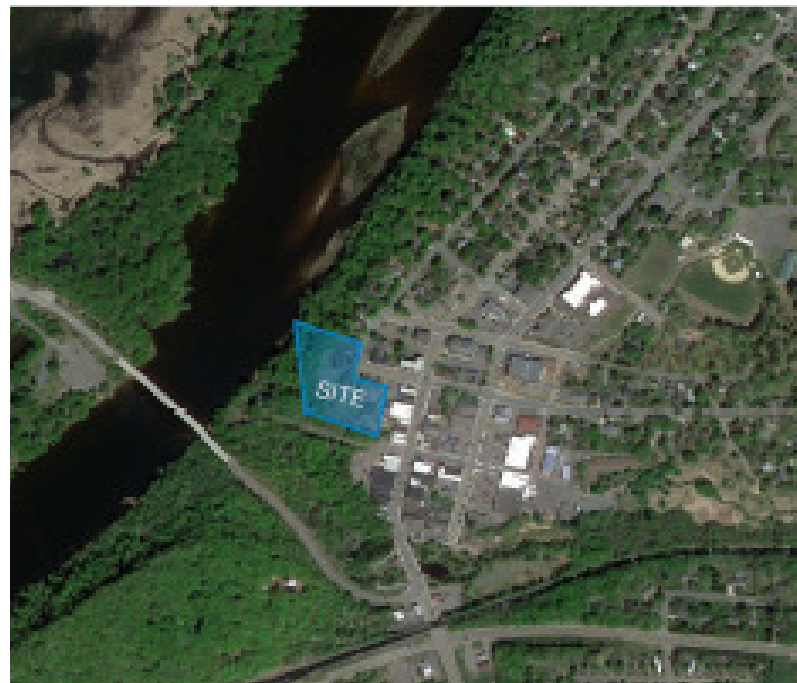


## PROPERTY DESCRIPTION

- 2,750sf
- Deck 28'x20' approximately
- Mixed Use 99-unit market rate luxury apartment project
- Full liquor license available
- Located on the scenic St. Croix River
- Project completion date, Spring 2027

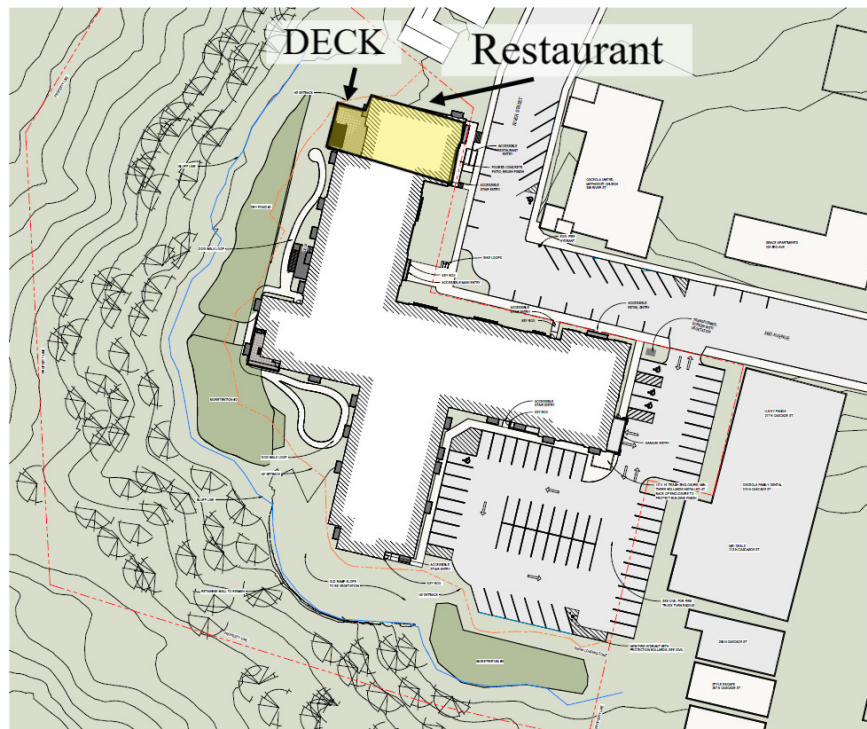
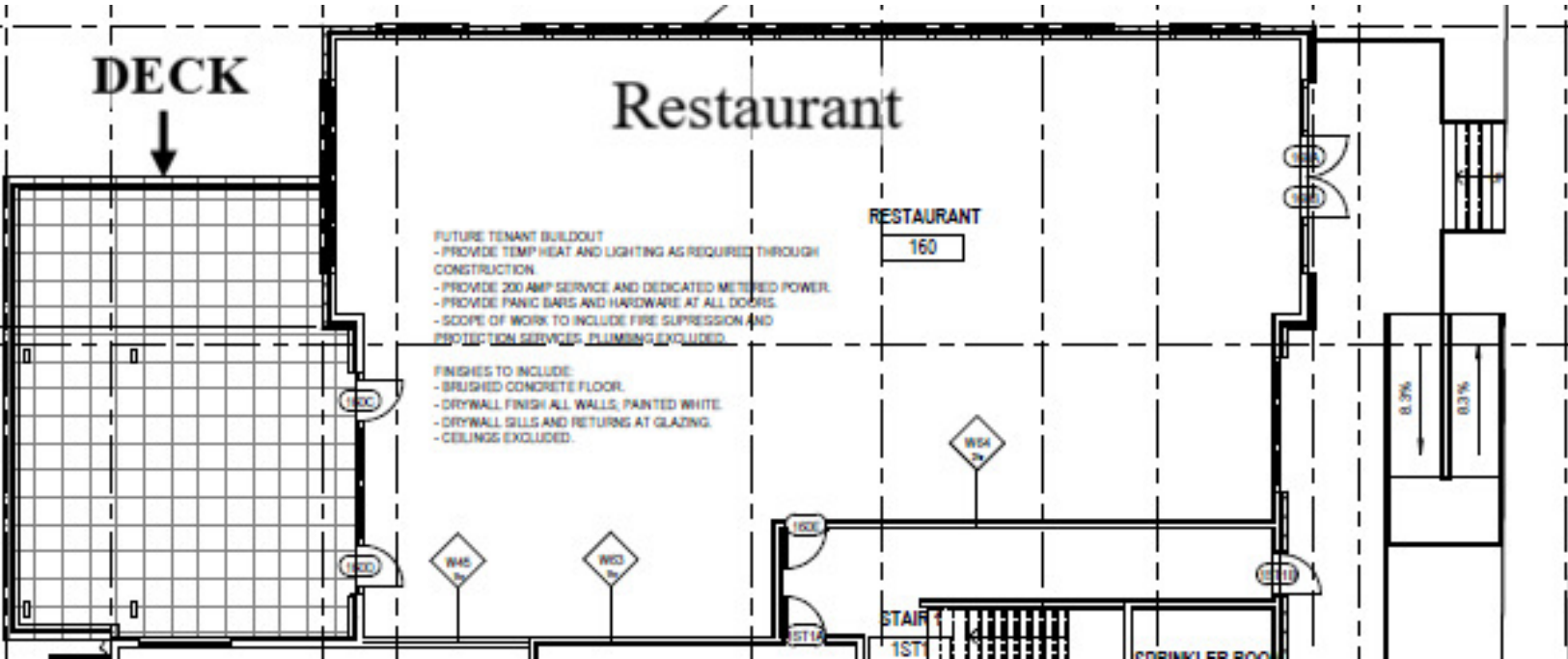
## PROPERTY HIGHLIGHTS

DEMOGRAPHICS	0.3 MILES	0.5 MILES	1 MILE
Total Households	161	392	868
Total Population	366	885	1,955
Average HH Income	\$82,241	\$82,847	\$84,149



DECK/PATIO 28' X 20' APPROX. 2,750 SF

301 RIVER STREET, OSCEOLA, MN



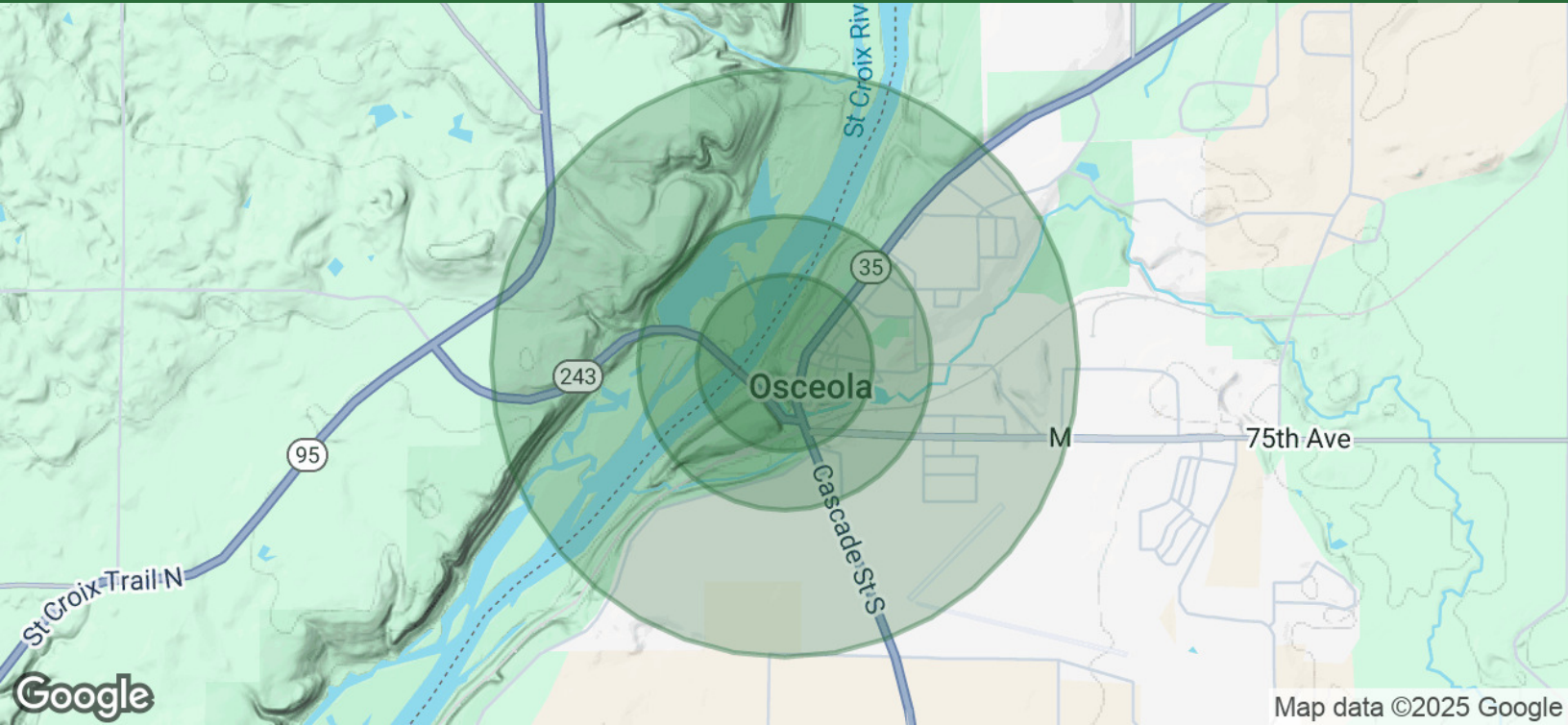
ARCHITECTURAL SITE PLAN Copy 1

301 RIVER STREET , OSCEOLA , MN 54020



DEMOGRAPHICS MAP & REPORT

301 RIVER STREET , OSCEOLA , MN 54020



POPULATION	0.3 MILES	0.5 MILES	1 MILE
Total Population	366	885	1,955
Average Age	43	43	43
Average Age (Male)	41	41	41
Average Age (Female)	44	44	44
HOUSEHOLDS & INCOME	0.3 MILES	0.5 MILES	1 MILE
Total Households	161	392	868
# of Persons per HH	2.3	2.3	2.3
Average HH Income	\$82,241	\$82,847	\$84,149
Average House Value	\$288,537	\$294,930	\$303,151

Demographics data derived from AlphaMap