



Offering Summary

Lease Rate:	Negotiable
Lease Type	Modified Gross
Available Second Floor SF:	2,375 SF
Available Third Floor SF:	2,359 SF
Building Size	24,314 SF
Year Built/Renovated:	1895/2019
Zoning:	M1-2
Submarket:	Lincoln Park

Property Overview

2,359 - 2,375 SF of built out office space for lease at the loft office building along the Clybourn Avenue commercial corridor, just north of Racine Avenue, in Chicago's affluent Lincoln Park neighborhood. The building is conveniently located approx 1/2 mile from the Clybourn "L" Station and approx one (1) mile from Interstate 94. Located directly across the street is a multi-tenant center featuring retailers Petco, Chipotle, and Noodles & Co, among others. Other neighboring retailers include Best Buy, Bed, Bath, & Beyond, Jimmy Johns, Potbelly, Buffalo Wild Wings, Whole Foods, Mariano's, Trader Joe's, Home Goods, The Home Depot, Buy Buy Baby, Walter E. Smith, Arhaus, Just Food For Dogs, Binny's, CVS, Starbucks, Dunkin', Ulta Beauty, and Pottery Barn, among many others.

Property Highlights

- Located in the heart of the Clybourn commercial corridor in the highly sought after Lincoln Park neighborhood
- Surrounded by national retailers and restaurants including Petco, Chipotle, and Noodles & Co directly across the street
- Walking distance to the "L" along with numerous restaurant / food users, many of which are within 1/2 mile

Matthew Tarshis
Principal

847.780.8063
mtarshis@frontlinerepartners.com

Zack Pearlstein
Senior Vice President

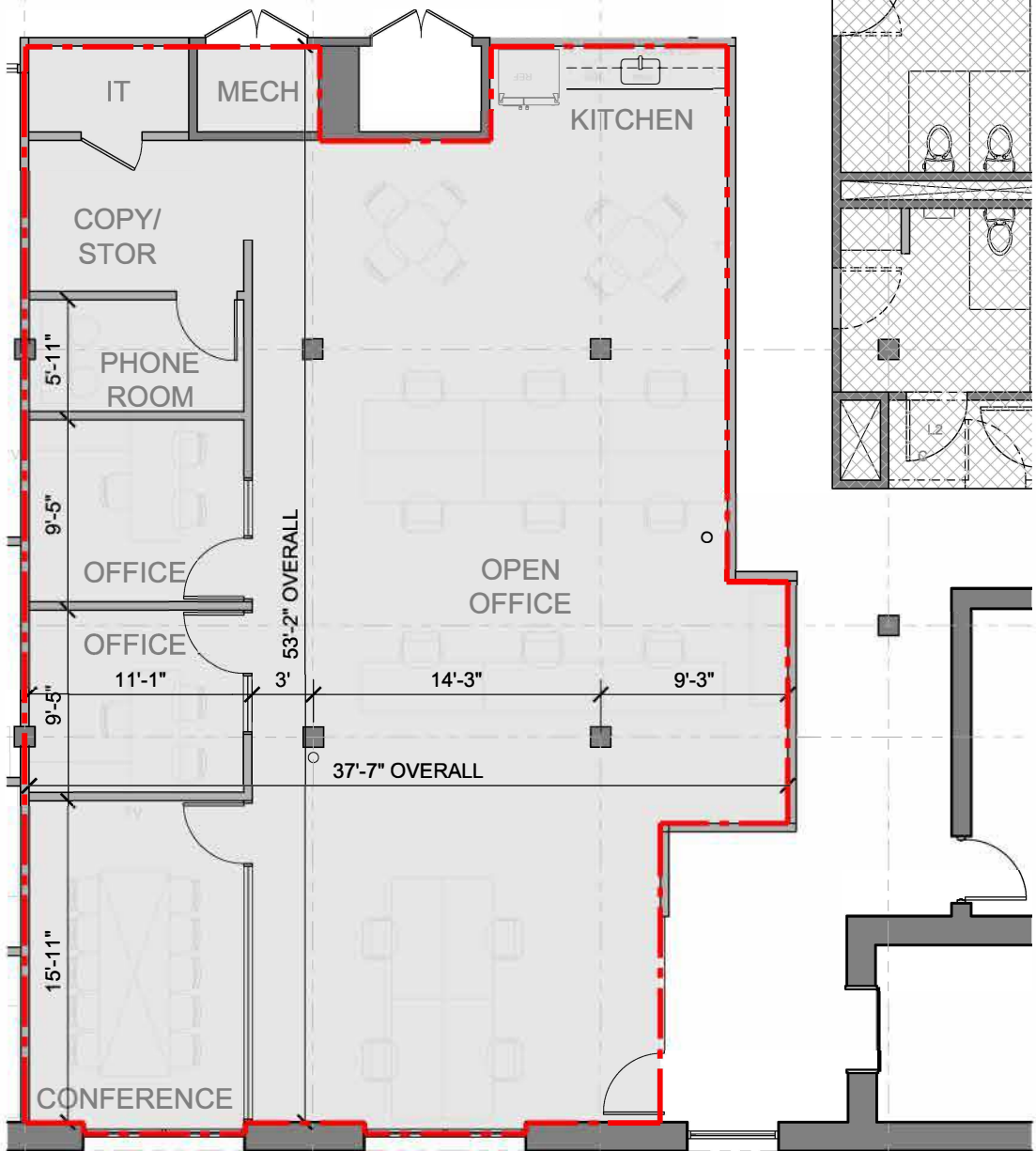
847.275.6106
zpearlstein@frontlinerepartners.com

Andrew Rubin
Executive Vice President

224.628.4005
arubin@frontlinerepartners.com

Andrew Picchiatti
Vice President

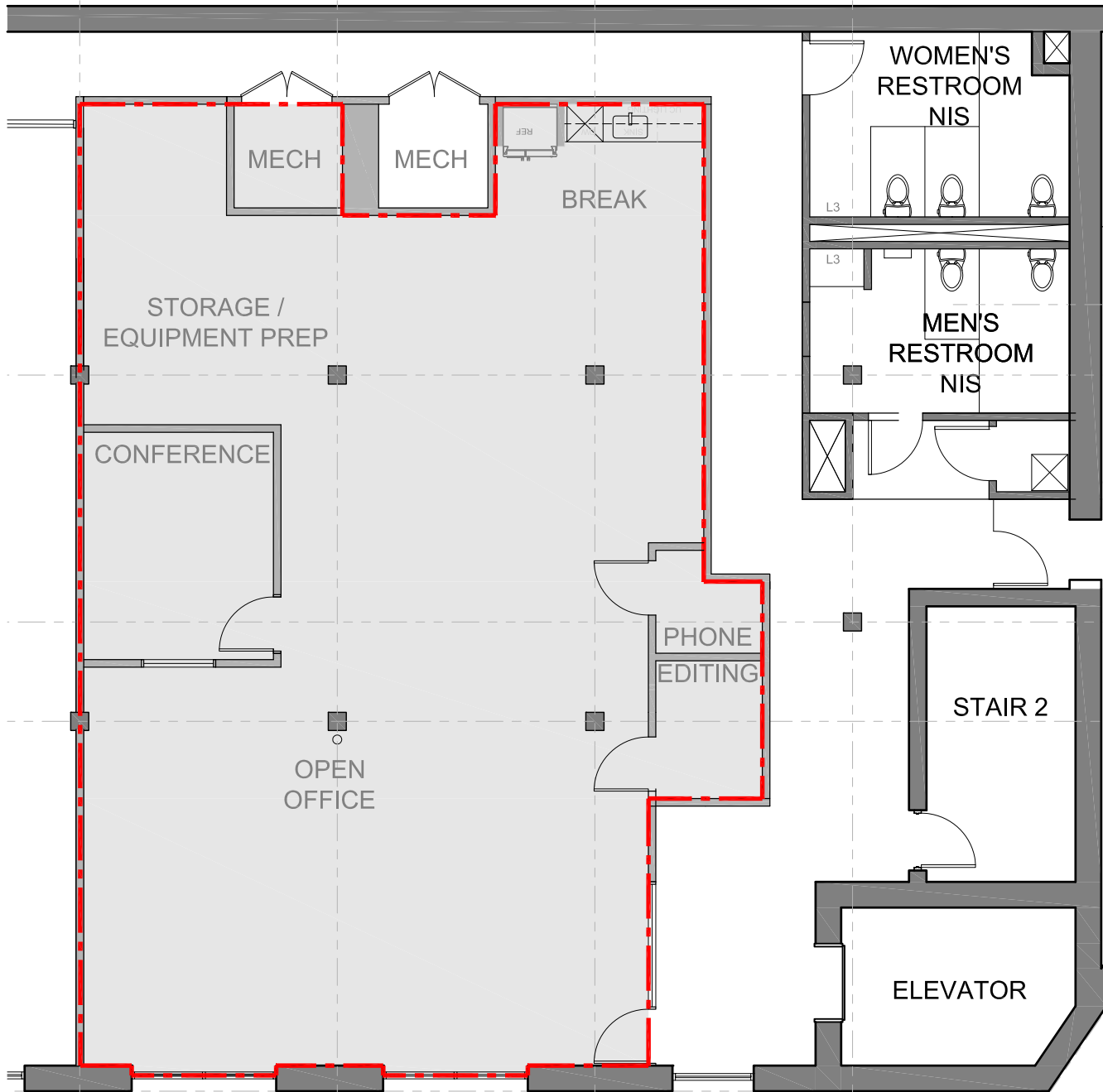
847.602.2005
apicchiatti@frontlinerepartners.com



SUITE 202
OA: 1,825 SF
RSF: 2,375 SF



Rentable Area (RSF) is measured in square feet and is calculated using ANSI/BOMA Z65.1 - 2010 Office Building Standard, Method A.



SUITE 302
OA: 1,825 SF
RSF: 2,359 SF



Rentable Area (RSF) is measured in square feet and is calculated using ANSI/BOMA Z65.1 - 2010 Office Building Standard, Method A.



Google

Imagery ©2025 Airbus, Maxar Technologies

Matthew Tarshis
Principal
847.780.8063
mtarshis@frontlinerepartners.com

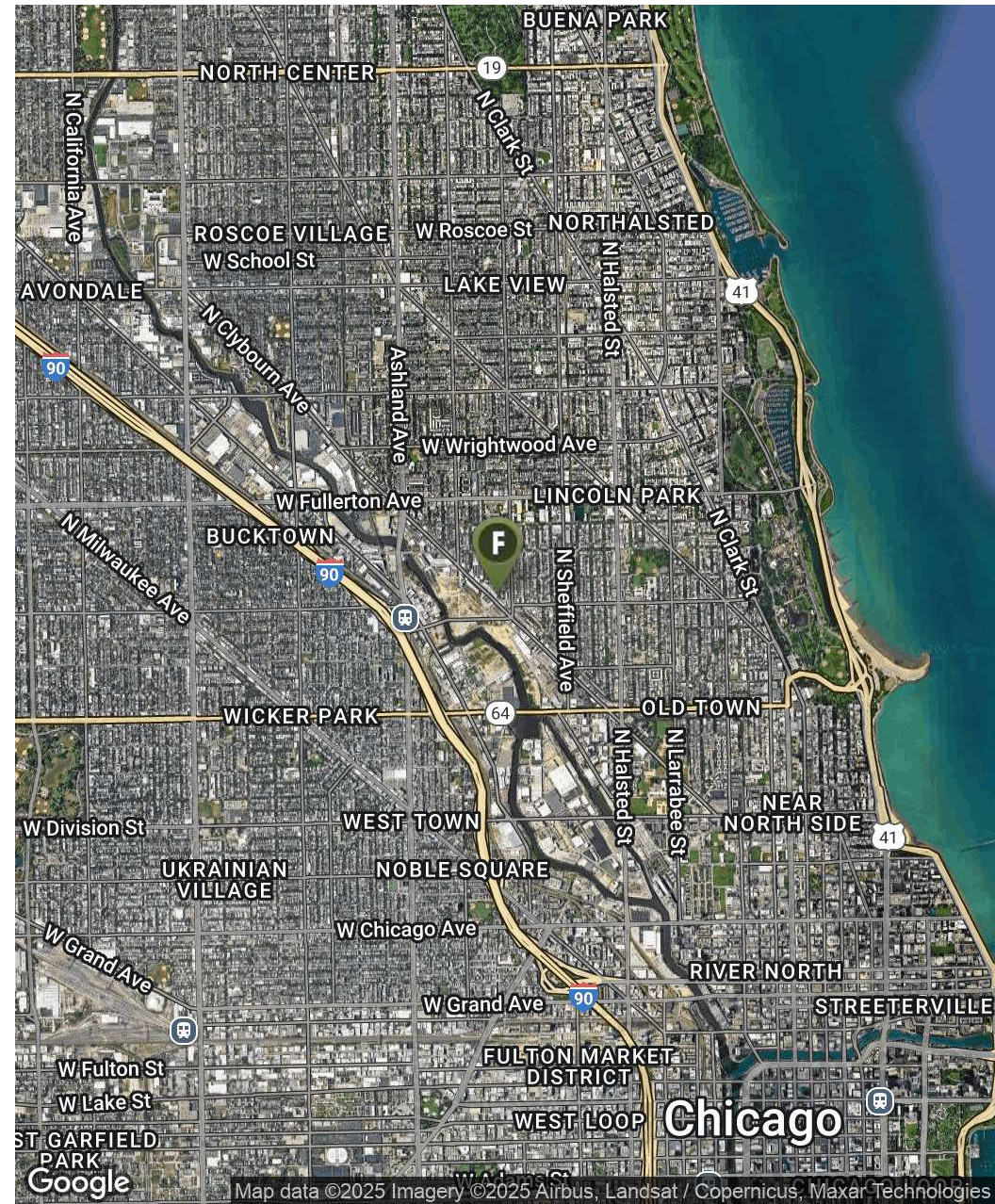
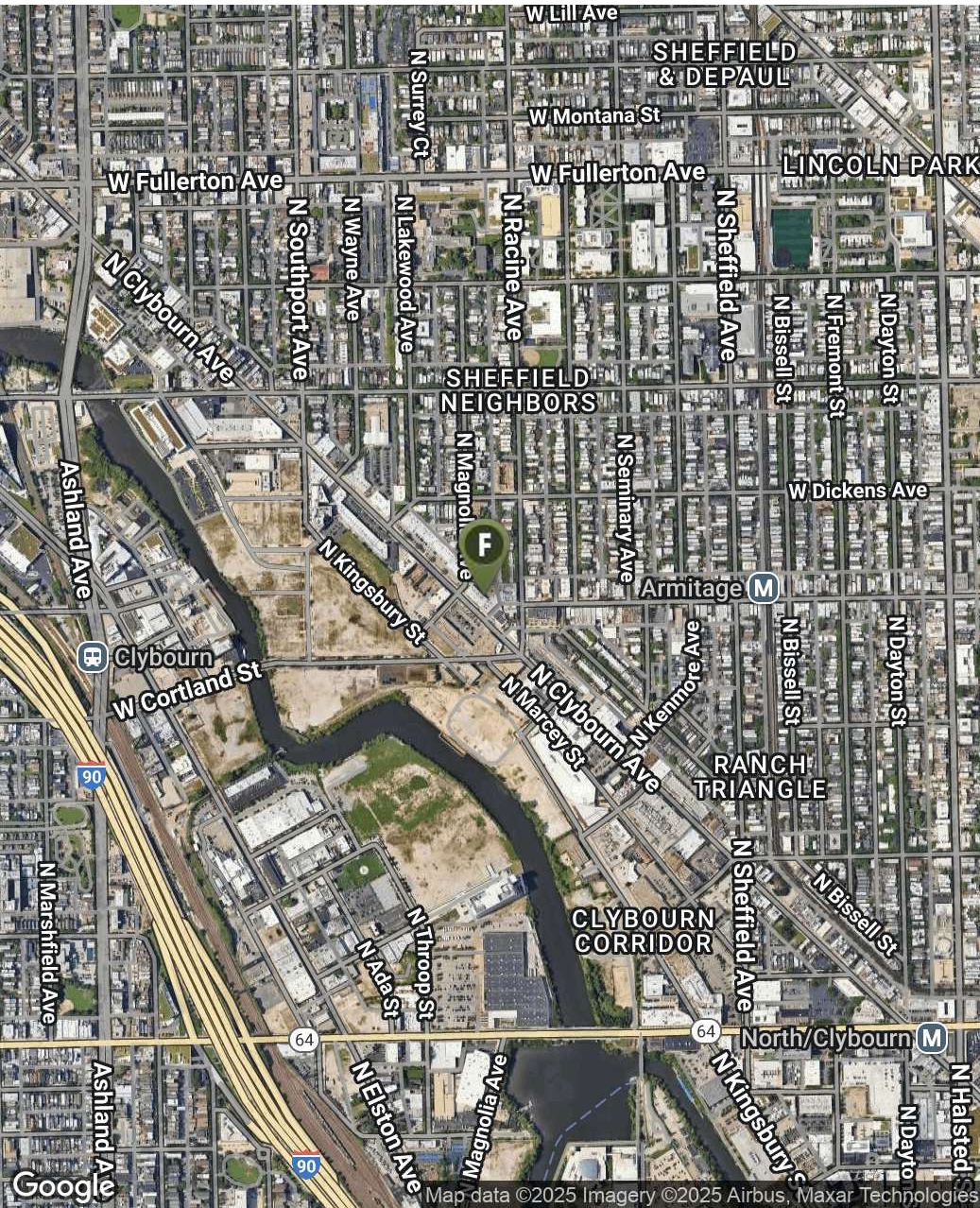
Zack Pearlstein
Senior Vice President
847.275.6106
zpearlstein@frontlinerepartners.com

Andrew Rubín
Executive Vice President
224.628.4005
arubin@frontlinerepartners.com

Andrew Picchiatti
Vice President
847.602.2005
apicchiatti@frontlinerepartners.com

FOR LEASE | 2001 N CLYBOURN AVE

LOCATION MAP



Matthew Tarshis
Principal
847.780.8063
mtarshis@frontlinerepartners.com

Zack Pearlstein
Senior Vice President
847.275.6106
zpearlstein@frontlinerepartners.com

Andrew Rubin
Executive Vice President
224.628.4005
arubin@frontlinerepartners.com

Andrew Picchiatti
Vice President
847.602.2005
apicchiatti@frontlinerepartners.com

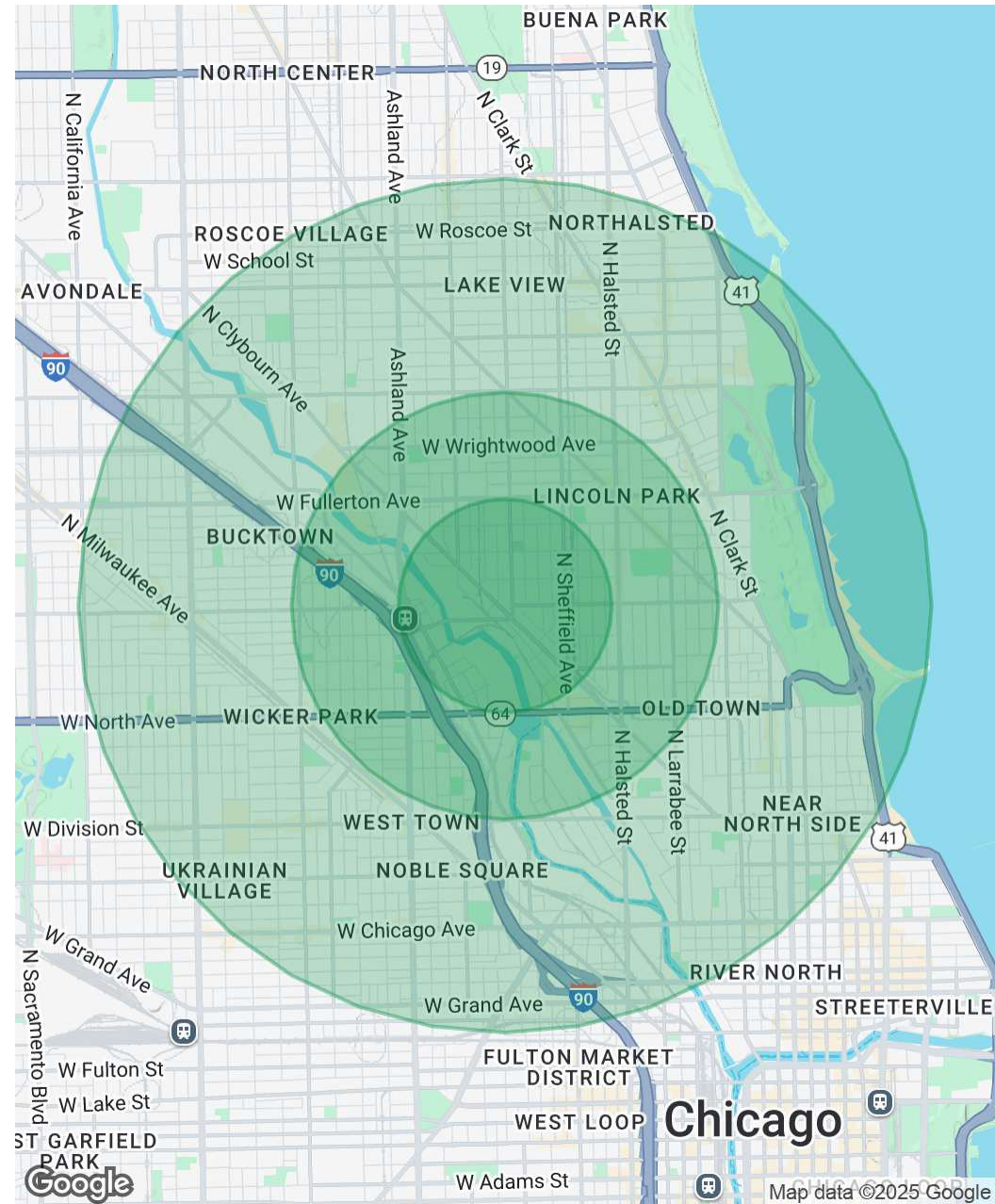
FOR LEASE | 2001 N CLYBOURN AVE

DEMOGRAPHICS MAP & REPORT

Population	0.5 Miles	1 Mile	2 Miles
Total Population	11,796	55,541	278,754
Average Age	27.5	31.1	33.1
Average Age (Male)	28.0	31.2	33.3
Average Age (Female)	27.4	31.4	33.2

Households & Income	0.5 Miles	1 Mile	2 Miles
Total Households	4,316	25,161	152,153
# of Persons per HH	2.7	2.2	1.8
Average HH Income	\$214,325	\$192,793	\$149,052
Average House Value	\$807,211	\$702,140	\$521,347

* Demographic data derived from 2020 ACS - US Census

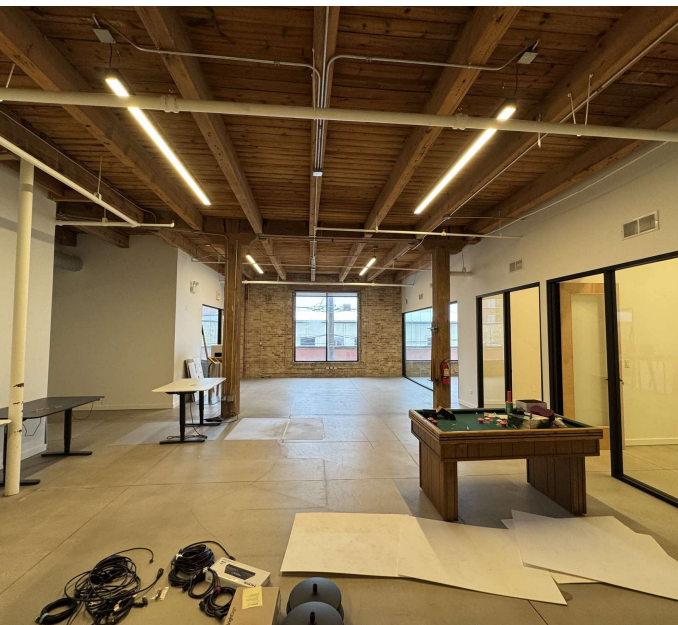


Matthew Tarshis
Principal
847.780.8063
mtarshis@frontlinerepartners.com

Zack Pearlstein
Senior Vice President
847.275.6106
zpearlstein@frontlinerepartners.com

Andrew Rubin
Executive Vice President
224.628.4005
arubin@frontlinerepartners.com

Andrew Picchiatti
Vice President
847.602.2005
apicchiatti@frontlinerepartners.com



Matthew Tarshis
Principal

847.780.8063
mtarshis@frontlinerepartners.com

Zack Pearlstein
Senior Vice President

847.275.6106
zpearlstein@frontlinerepartners.com

Andrew Rubin
Executive Vice President

224.628.4005
arubin@frontlinerepartners.com

Andrew Picchietti
Vice President

847.602.2005
apicchietti@frontlinerepartners.com