

Park Industrial Village Building C - Suite 500

5,204 SF Available

2010 East Center Circle #500
Plymouth, MN 55441



Contact Us

**PARKER
RICKERT**

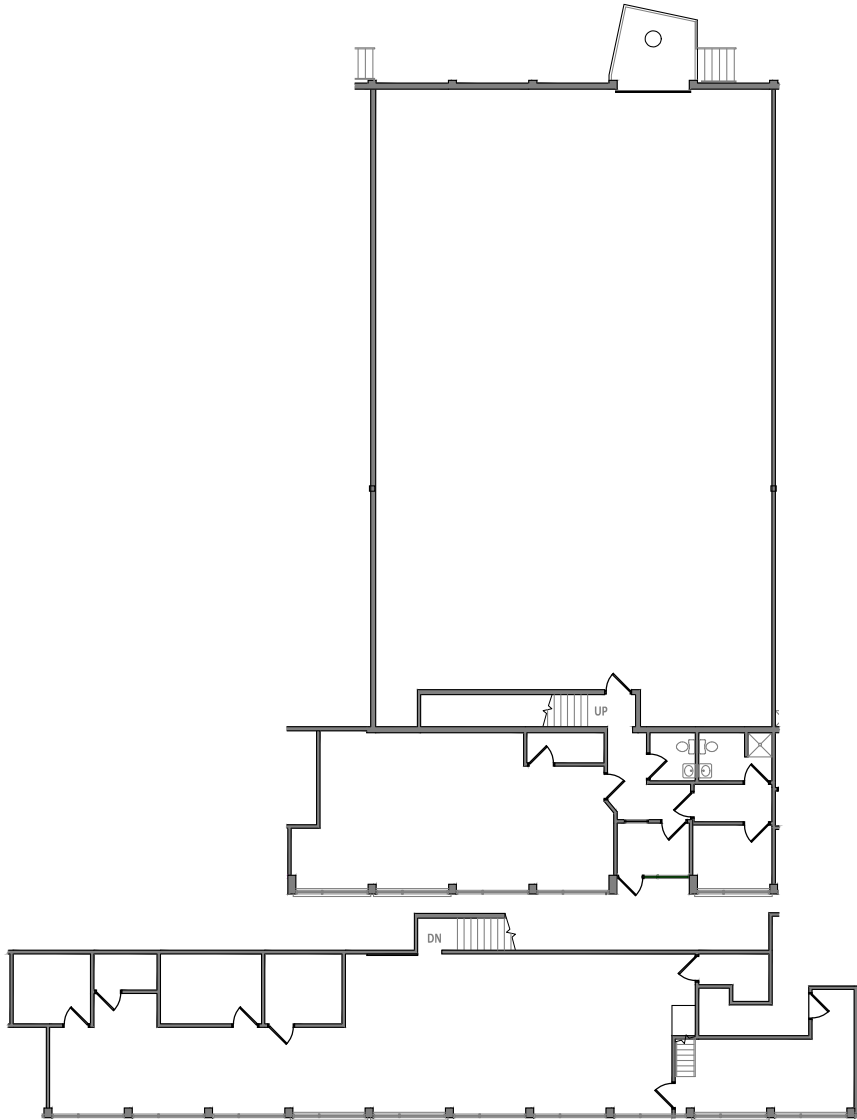
+1 612 845 8022

parker.rickert@cbre.com

**TOM
BENNETT**

+1 612 386 6108

tom.bennett@cbre.com



Overview

Park Industrial Village is strategically located for both Northwest and Southwest users. Accessed via I-494 & Highway 55, Building C (a free-standing building), has a new roof & tuck pointing, and rare 20' clearance height.

5,204

Available SF - Available on 5/1/26



Lease Rates
+ Negotiable

2026 Est. Re Tax/CAM
+ \$4.17 PSF

Total Building Area
+ 20,248

Available SF
+ 5,204 SF Total
+ 3,905 SF Warehouse
+ 1,299 SF Office
+ 1,708 SF Mezzanine

Land
+ 16.75 acres

Loading
+ 1 dock

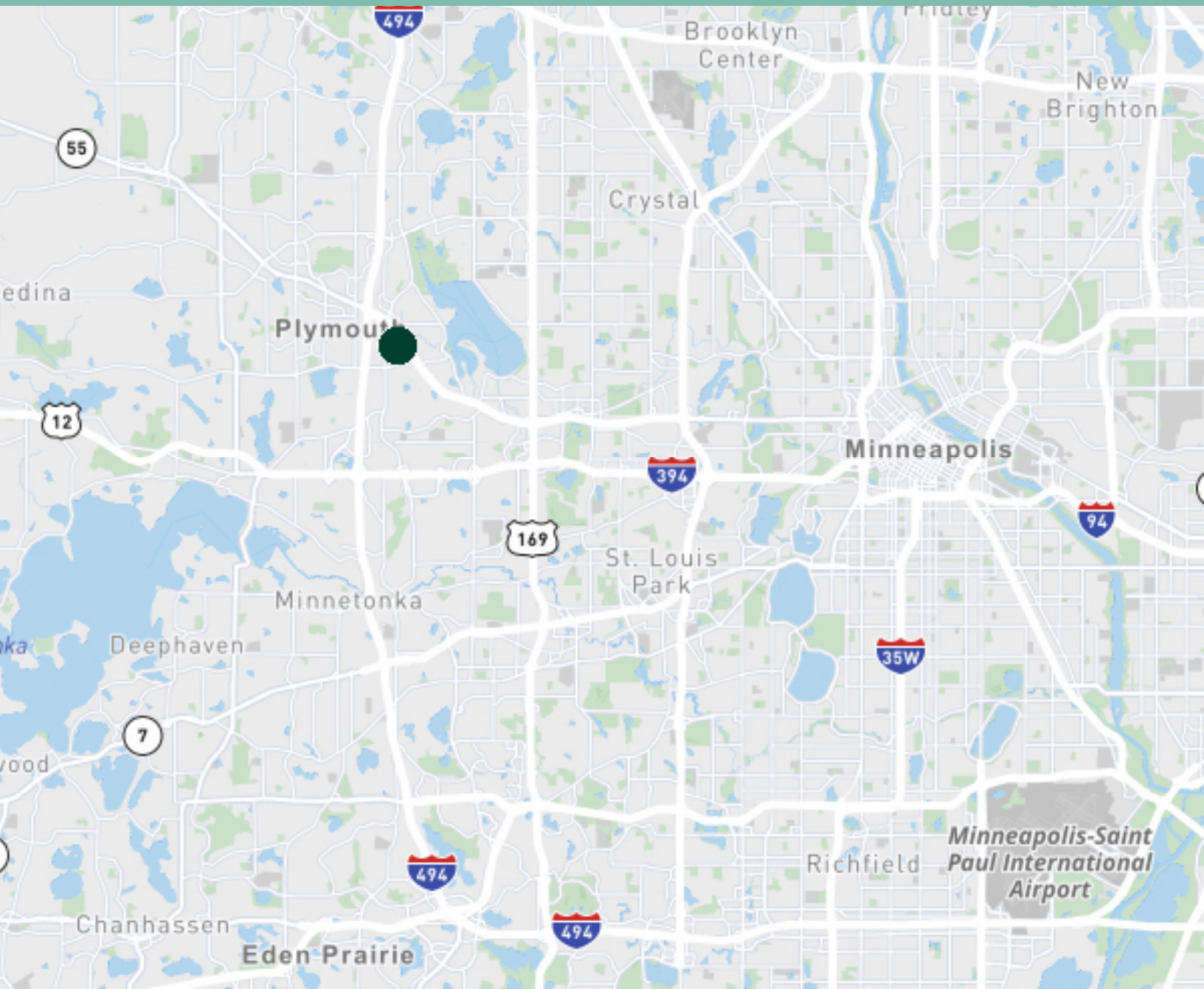
Year Built
+ 1979

Clear Height
+ 20'

Rare 20' clear height



Excellent access to I-494 & Hwy 55



Contact Us

**PARKER
RICKERT**

+1 612 845 8022

parker.rickert@cbre.com

**TOM
BENNETT**

+1 612 386 6108

tom.bennett@cbre.com